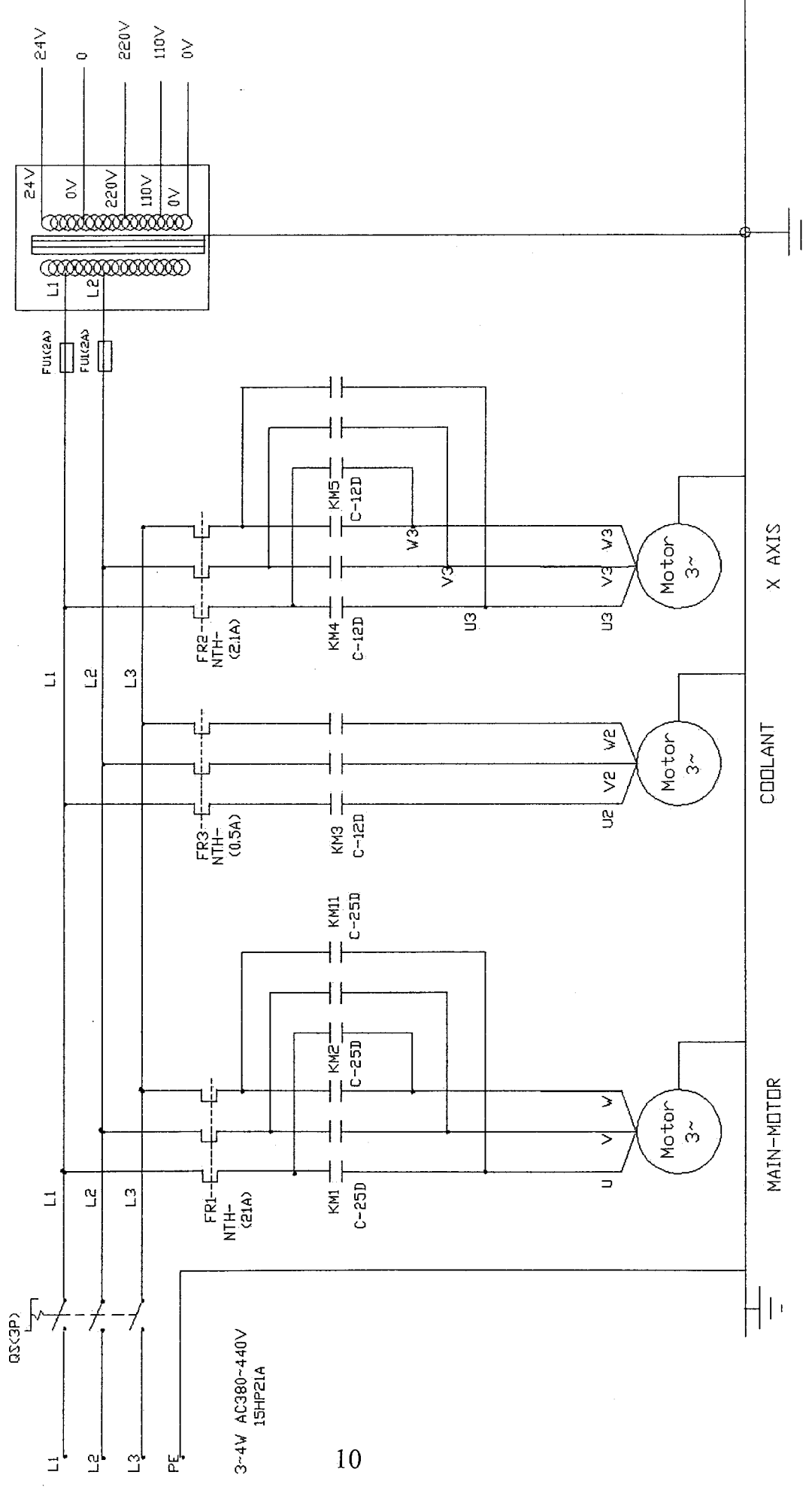


04-12-2010

Electric Diagram

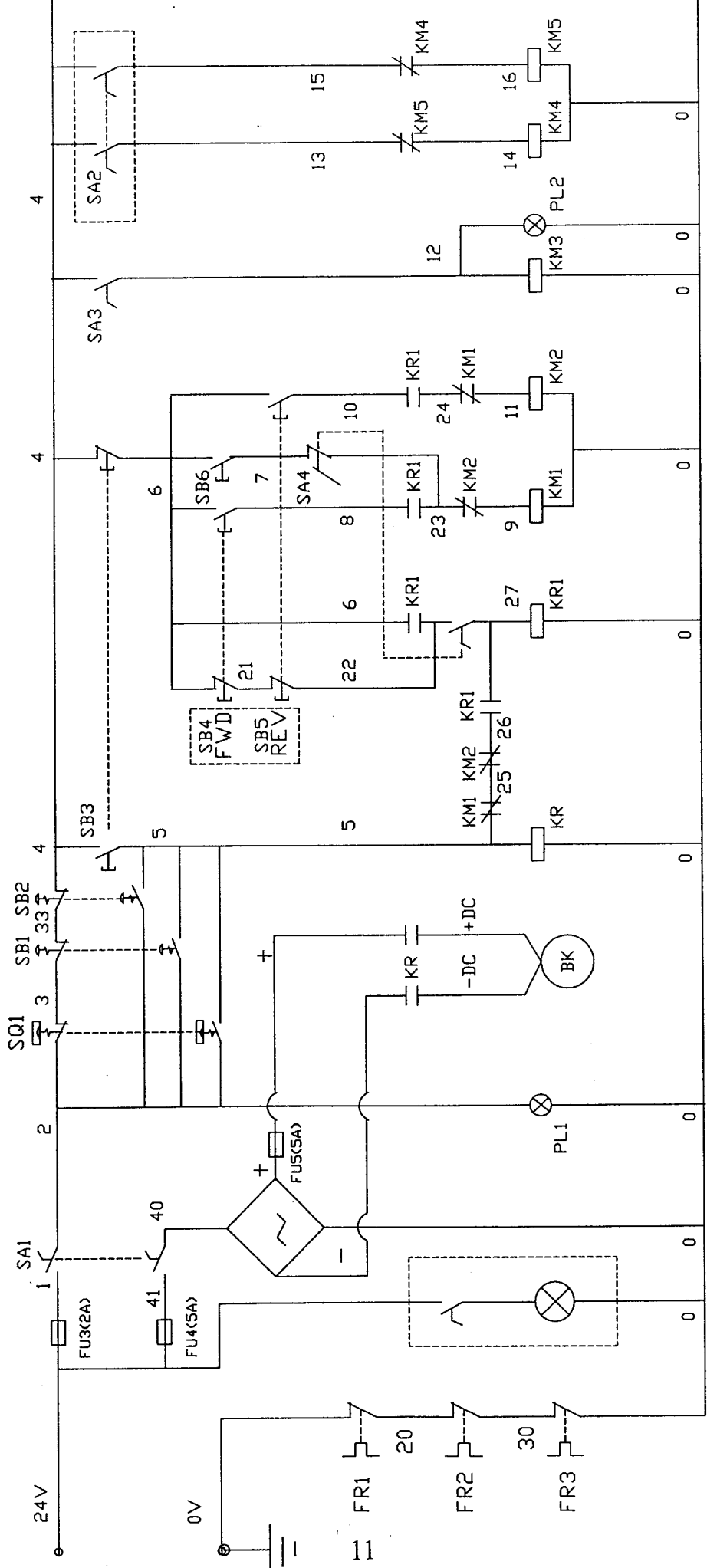


3~4W AC380-440V
15HP21A

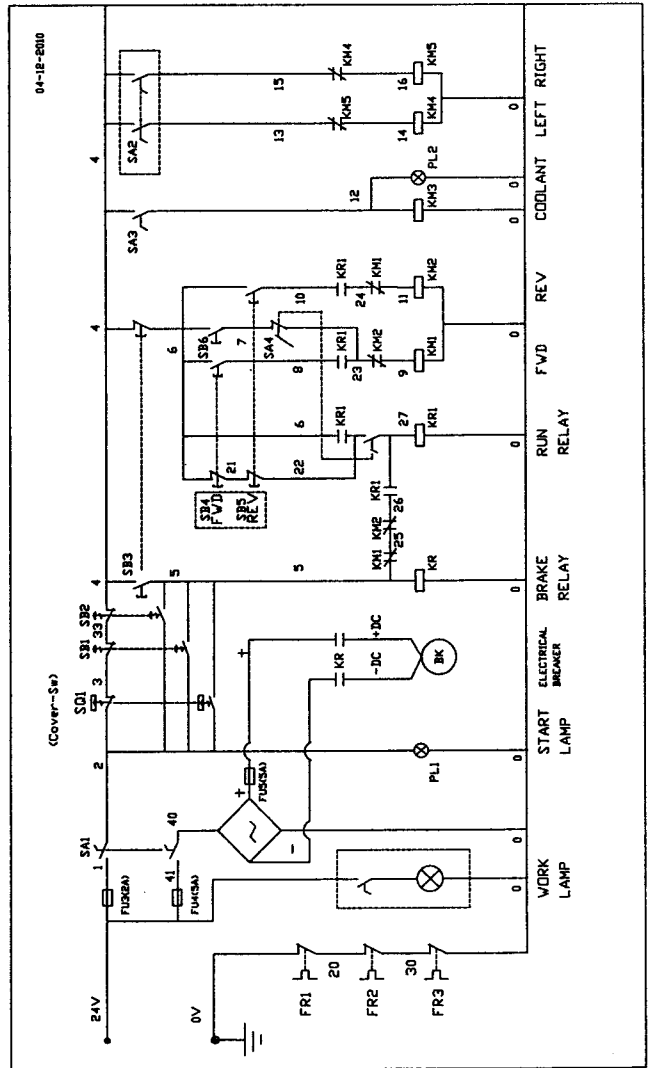
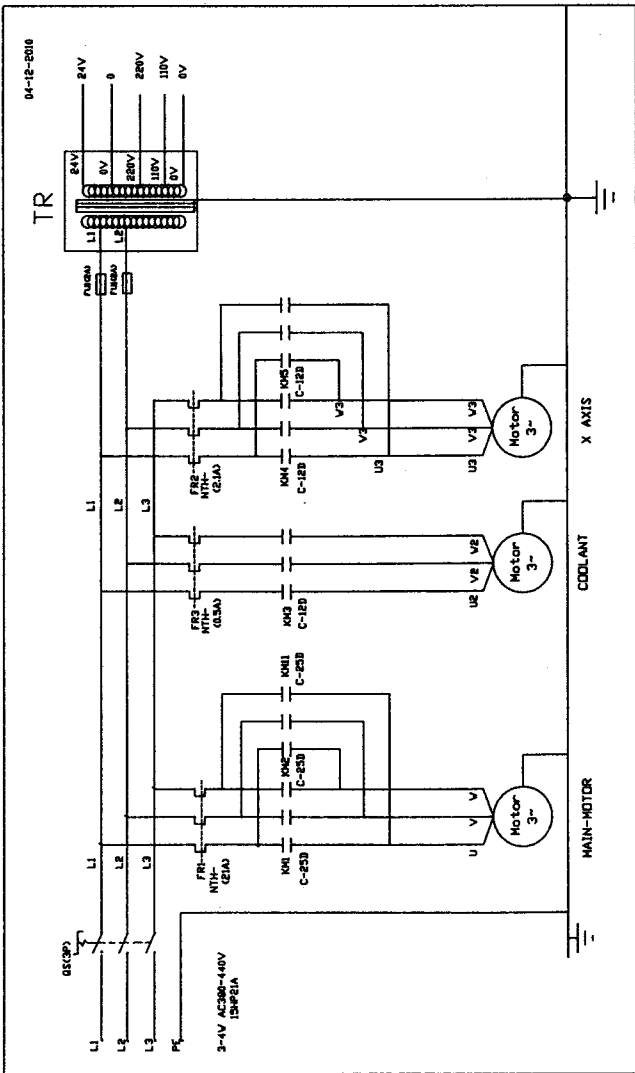
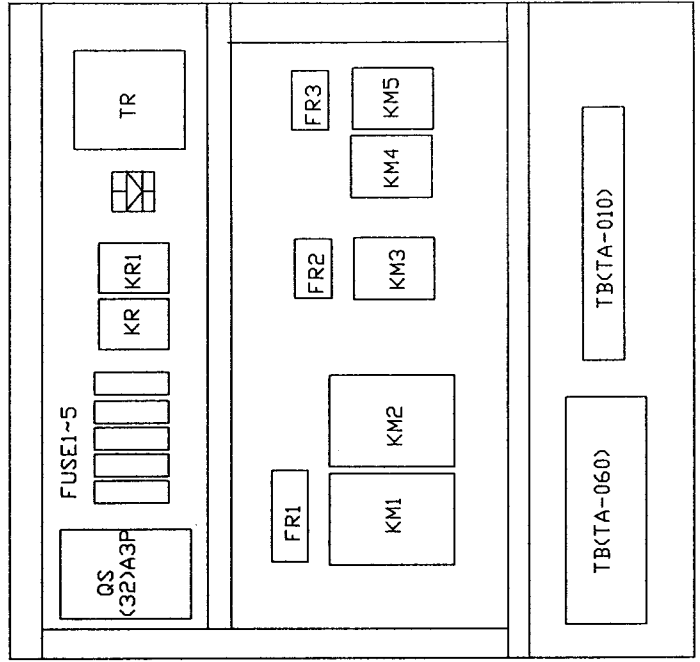
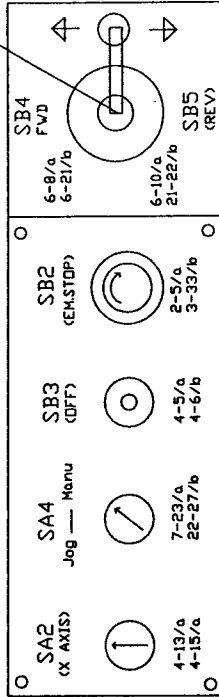
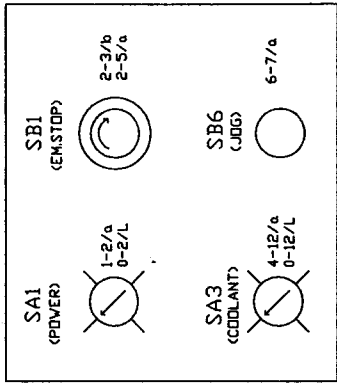
Control Circuit

04-12-2010

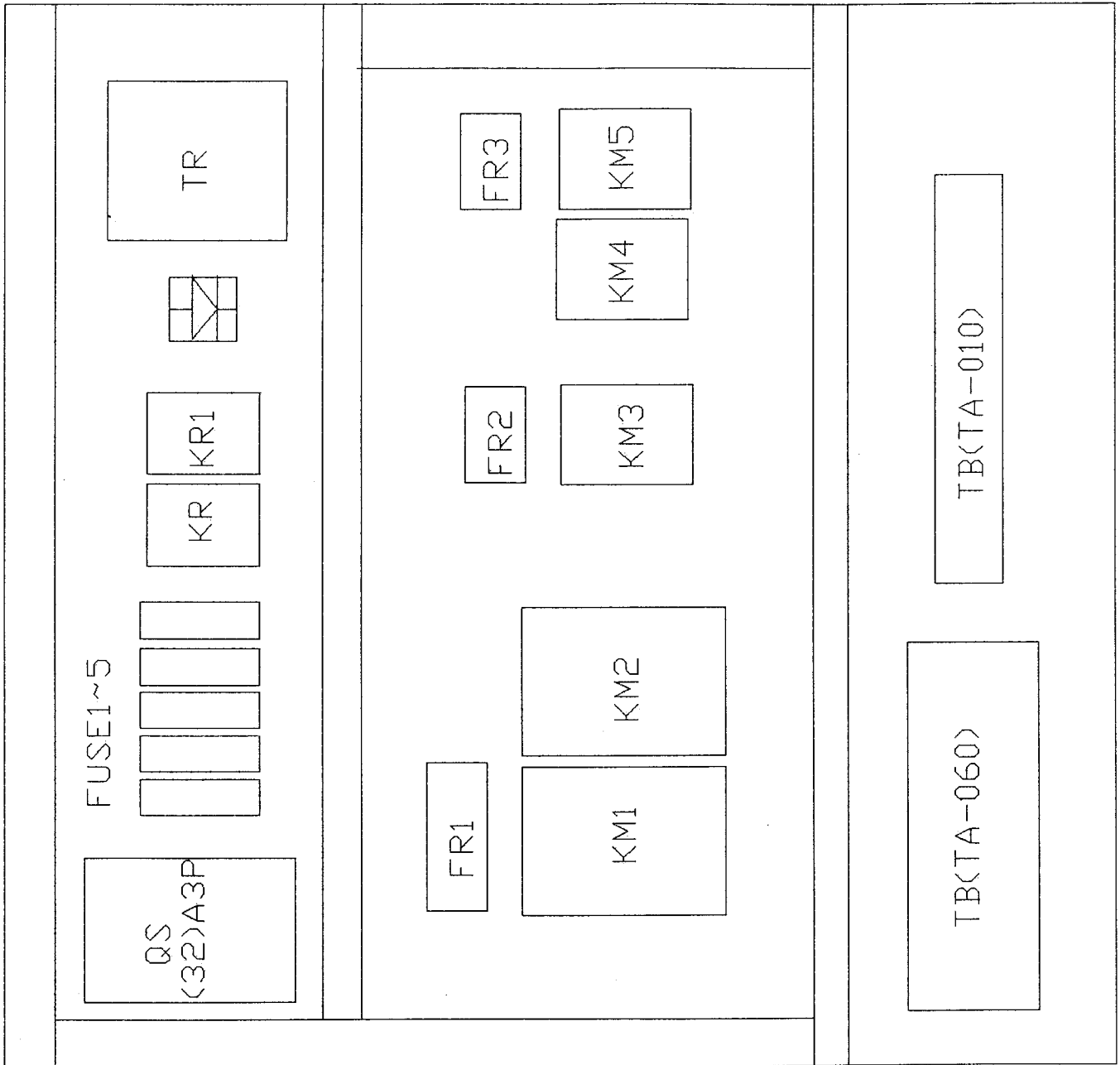
(Cover-Sw)



- 0 WORK LAMP
- 0 START ELECTRICAL BREAKER
- 0 BRAKE RELAY
- 0 RUN RELAY
- 0 FWD
- 0 REV
- 0 COOLANT
- 0 LEFT
- 0 RIGHT



Lay-out of Electric Cabinet



Electrical Component List

Manufacturer		SCHEDULE OF ELECTRICAL EQUIPMENT				Sheet	
Order						2010-04-12	
LATHE MACHINE: CE(+字機) + Fast 15HP			See also list			Drawn	Louis
						Checked	
Item	Description and function	Technical data	Quantity	Supplier	Suppliers reference		
QS	DOOR-LOCK	AC 600V 3P 32A	1	S.E.C	ZH-C332		
FU1	AC FUSE	AC 600V	1	SHINING	FS-011		
FU2	TO TRANSFORMER	30mm 3A	1	SHINING	FS-011		
FU3	AC Low Voltage to Countrol	AC 600v 30mm 5A	1	SHINING	FS-011		
FU4	AC Low Voltage to Brake	AC 600v 30mm 5A	1	SHINING	FS-011		
FU5	DC Low Voltage to Brake	AC 600v 30mm 5A	1	SHINING	FS-011		
KM1	Main-Motor(For)	3Pia Ri=AC660V Rt=50A	1	N.H.D	C-35D		
KM2	Main-Motor(Rev)	AC3 220V 11kW 380V 19kW Coil AC 24V	1		C-35D		
KM3	Coolant-Pump	3Pia Ri=AC660V Rt=25A Coil AC 24V	1	N.H.D	C-12D10		
KM4	Fast-Motor(For)	3Pia Ri=AC660V Rt=25A	1	N.H.D	C-12D		
KM5	Fast-Motor(Rev)	AC3 220V 4kW 380V 7.5kW Coil AC 24V	1		C-12D		
KR	Control-Relay	AC 7A 250V Coil AC 24V	1	ARITA	MR-2P		
KR1			1		MR-4P		
FR1	Over-Load (Main-Motor)	Ui=AC 600V 21A~25A/21A	1	N.H.D	NTH-25		
FR2	Over-Load (Coolant-Pump)	Ui=AC 600V 0.35A~0.5A/0.5A	1	N.H.D	NTH-0.5		
FR3	Over-Load (Move-Motor)	Ui=AC 600V 1.8A~2.5A/2.1A	1	N.H.D	NTH-2.5		
TR	Transformer	AC Hi=380v~440V AC LO=24V	1	S.L	TR(4-0)		
SB1	Power Selector Switch	AC 250V 10A	1	MACK	MK/CF-30		
SB2	Emergency-Stop	MAX.600V	1		MK/B-30		
SB2-1	Emergency-Stop	1NO*1NC Lamp AC 24V 1.5W	1		MK/B-30		
SB3	Jogging-Botton		1		MK/BF-30		
SB4	Pump-Selector		1		MK/C-30		
SB6	Move-Selector		1		MK/C-30		
SB5	Runway-Selector Monolever switch	AC 250V 6A MAX.600V	1	TEND	TMR-302		
SQ1	Cover-Limit.Switch	AC 125V 10A 250V 10A MAX.600V	1	C.T	CT-1701		
SQ4	Foot-Cut (L.s)	AC 125V 10A 250V 10A MAX.600V	1	C.T	CT-1704		