

**Committed to excellence and productivity
for the machine tool industry.**

SUPRA[®]

Go Easy Go Fast

Featuring

ANILAM 3200/3300MK



ACER Group

SUPRA[®] CNC E-MILL[®]

"A real CNC mill for the true machine operator."

Start to make parts within a few hours. No need to be experienced with G-codes, or CAD to operate. Increase your productivity up to 85%, see your R.O.I. (return on investment) in as short as 90 days. Supra is the best CNC mill for your DIE & MOLD WORK, TOOLING & FIXTURE, SHORT LOT RUN, PATTERN, PROTOTYPE, REPAIR JOBS, SECONDARY OPERATION. If you are still using DIGITAL READOUT and POWERFEED with ROTARY TABLE, and having trouble to boost your productivity, it is time for a change. The easy, trouble free, but powerful SUPRA CNC E-MILL provides you with high productivity at an affordable price. Supra E-Mill is the best solution for your job.



The simplicity look of the CNC control software includes the timer and parts counter.

Feature:

Dual Processor Control
 Color 14" Screen
 Hard Disk Drive
 8Mb RAM
 Floppy Disk Drive
 RS-232
 Upgradable Hardware
 Conversational Language
 Simple Format
 Powerful Software
 DXF Converter
 Tool Page
 One Touch Z-Offset
 Fixture Offsets
 Drilling Canned Cycles
 Facing Cycle
 Profile Cycles
 Pocketing Cycles
 Designed by Machinists
 Polar Moves
 Concurrence
 Calculators
 RMS
 Loop
 4 View Graphics
 Real Time Graphics
 Copy, Rename

Benefit:

Fast and Accurate (Pentium 166 MMX & DSP 50 MHz)
 Easy to View
 Lots of Storage Space, 8.0 GB min.
 Execute Huge Programs
 Easy Program Transfer via Disk
 Program Communications In-Out
 Future processor, Memory & Networking Upgrades are Easy
 Easy to Learn, Easy to Program
 First Time Users Operate Right Away
 Unlimited Parts can be Programmed at the Control
 Convert AutoCad[™] files into part programs directly (Offline Software only)
 99 Tool Offsets
 Tool Length Offsets done with the Touch of a Key
 Multiple Parts done Easily, with XY Calibrate buttons
 4 Different Cycles to Choose From
 Canned Cycle for Face Milling
 Canned Cycles for Circular and Rectangular Profiling
 5 Pocketing Canned Cycles, Including Irregular Shape
 Input from Machinists make these cycles complete
 program Angles without Trig
 Program Another Job while Cutting One
 Built-In Calculators with Paste-In Answers. Math, Trig, Geometry
 Rotate, Mirror and / or Scale any Moves
 Loop any Moves for Easy Repeating
 Draw the Program with Top, front, Side or Isometric Views
 Draw the Part While Cutting It
 copy and rename Programs to Save Time

The ANILAM 3300MK and 3200MK controls create the industry's new standard in combining ease of use and high performance.

In the new design, the computer, motion control, floppy disk drive and standard 8.0GB hard drive are built into the console.

EASY TO USE

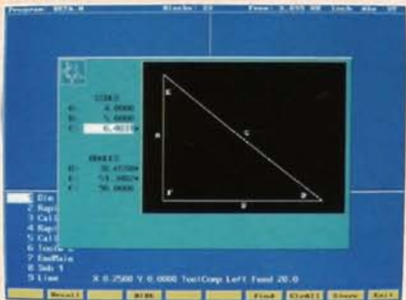
3-Mode Calculator

To provide CAM assistance, the 3300MK and 3200MK has three integral calculator modes: math with trigonometry functions, right triangle and geometry.



Triangle

The right triangle calculator allows the machinist to quickly find any side or angle of a right triangle, whenever two pieces of data are known. For more complex calculations, you can input points, lines and circles, then find intersections, centers or any other information related to the input geometry.



Drill Cycle

By answering a few questions this will take you through simple drill, peck drill and boring routines.



Bolt Hole Pattern

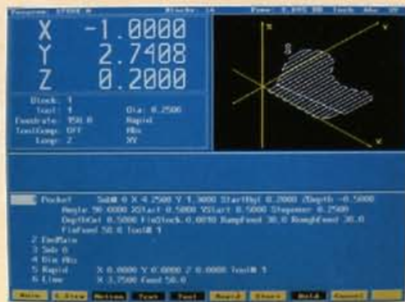
By answering only five simple questions, bolt hole patterns of any configuration can be easily produced



POWERFUL

Irregular Pocket

Answer a few basic prompts to make clearance of any shape a simple routine.



Geometry

Use the geometry calculator for determining points, lines and circles, similar to a CAD/CAM system. The result automatically becomes part of the program.



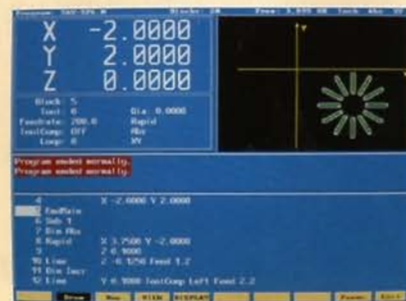
User-Friendly Draw Graphics Mode

Before the first chip is cut, the user-friendly draw graphics mode provides program verification. When the image, the program text and the CNC status are all displayed on one screen, program verification becomes a simple function.



Rotate / Mirror / Scale Function

Answer a few basic prompts to make a rotate / mirror / scale of any shape of simple routine.



Ballscrews

Precision ground C5 ballscrew for high accuracy.

Quill Drive Assembly

This rugged, durable one-piece casting incorporates ANILAM's unique, time-tested and proven quill block drive design. This Z-axis downfeed assembly ensures accuracy, repeatability and can take real cuts for many years to come. The precision-ground ballscrew is driven by a powerful 31"/lb (3.5 Nm) DC servo motor.

X-Axis Drive Assembly

A rugged one-piece machined casting guarantees years of reliable operation. ANILAM's high quality kit components finish the machine with both the appearance and performance of today's finest CNC equipment.

Y-Axis Drive Assembly

Driven by a powerful 31"/lb (3.5 Nm) DC servo motor, this assembly features a tough and extremely durable one-piece machined casting. ANILAM's extended length 45° design accommodates knees of any width.



Accuracy

Precision-ground ballscrews with preloaded ball nut assemblies.

Unequaled Performance

Finest, industrial grade processors ensure outstanding performance and operation in all areas of program management.

Safety

machine and software limits are standard with every package.

Hardware Options

Autolube, precision linear encoders, electronic handwheel, remote start/stop and networking.

Powerful Servo Motors

Maintains smooth operation and precise positioning.

Handwheels

Provides all manual operations. Ideal for set up and teach modes and for machining the simplest parts.

2-to 3-Axis Upgradable

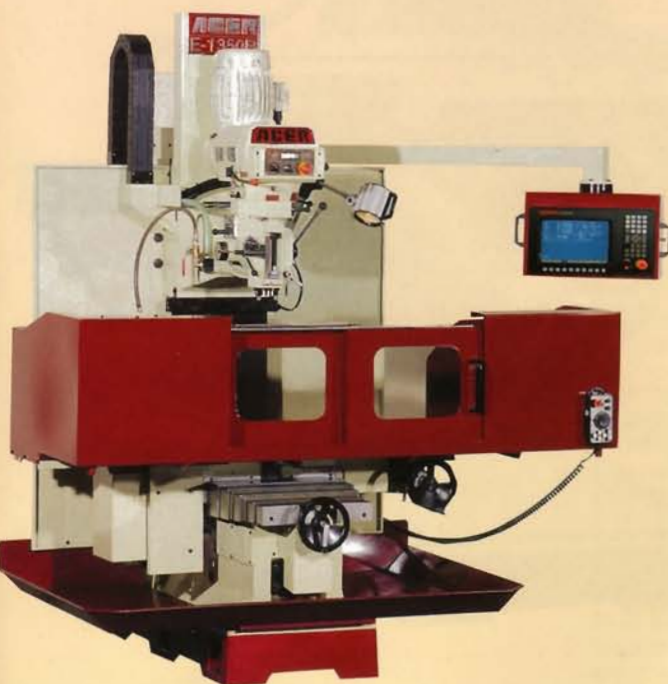
Easily and quickly accomplished when the need arises.

The ANILAM 3300MK and 3200MK

ANILAM is changing the way machinists and engineers think about controls. The new 3300MK and 3200MK give you more programming flexibility with hard drives that have storage capabilities ranging from large CAM-generated programs to average size daily functioning programs. These controls are configured to your needs; the 3200MK for 2-axis and the 3-axis 3300MK.

The PC-based 3300MK and 3200MK use true conversational format-real machinist's language to prompt you for various movements and functions.

The addition of DSP², an enhanced motion control system, means greater increases in productivity and much higher speed machining.



SUPRA[®] CNC E-Mill

the trouble-free mill

electronic
variable speed
spindle

3 HP "Baldor" high-efficiency motor for high torque output

CNC vector type A.C. frequency drive

infinite 0-4500 rpm constant spindle speed. Change in no time (0-4 sec.)

Machine can run on single or three-phase without changing the wiring

Low maintenance and downtime cost due to no plastic insert, kdy and moving pulley

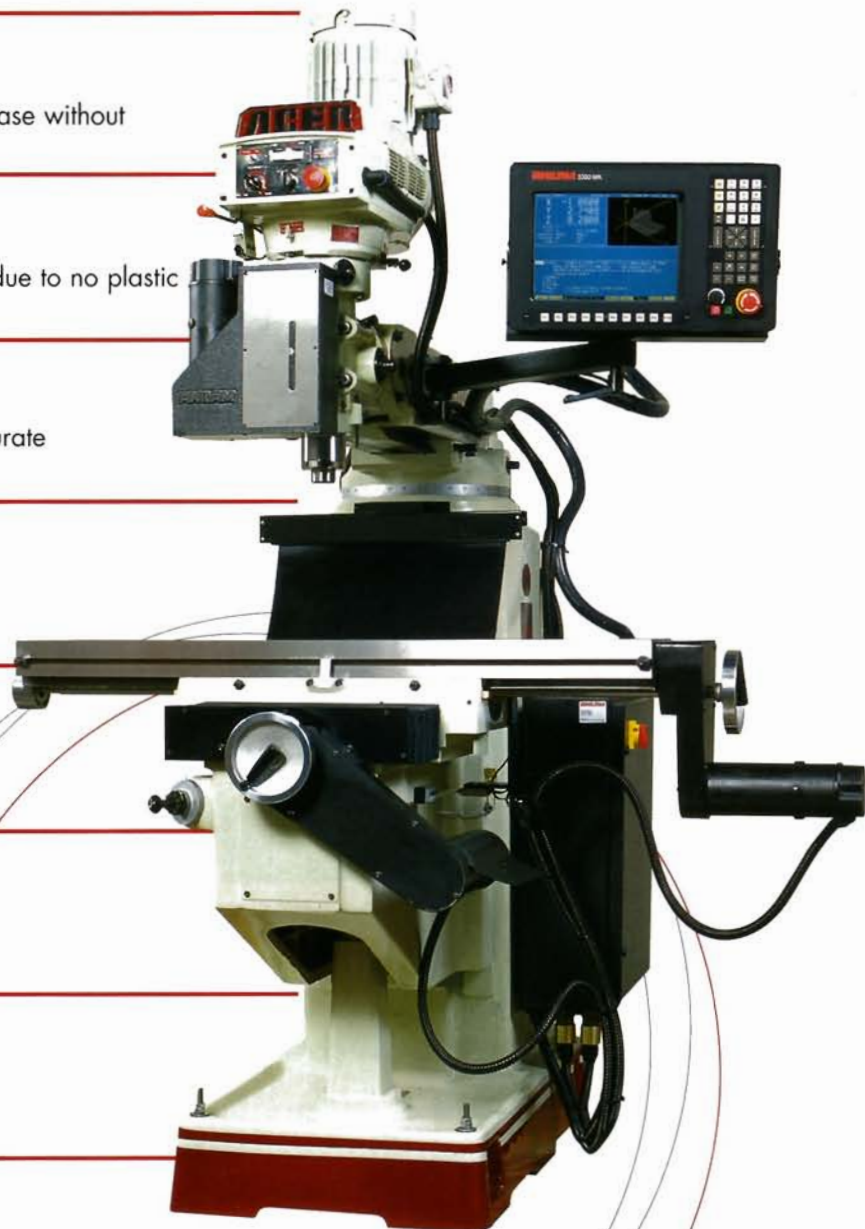
No rpm changer breakdown, but accurate reading on rpm to prolong tool life

Electronic and mechanical brake for fast spindle stop

No belt slippage for high-efficiency torque output

Boring and tapping application

Save energy costs up to 35%



CONTROLLER SPECIFICATION

General Operating Features	ANILAM 3200	ANILAM 3300		ANILAM 3200	ANILAM 3300
Run programs in manual/automatic mode	Yes	Yes	teach-in	Yes	Yes
Runs programs one block at a time	Yes	Yes	Z-axis quill drive assembly	No	Yes
DNC	Yes	Yes	Can disengage motor for manual quill operation	Yes	Yes
Manually command two axis simultaneously	Yes	Yes	Flat LCD Screen	12.1"	12.1"
Background programming	Yes	Yes	Feedrate override	Variable via potentiometer	Variable via potentiometer
Track cutting time (timer)	Yes	Yes	Separate motion control processor	50Mhz 32-bit DSP	50Mhz 32-bit DSP
Track number of parts produced (counter)	Yes	Yes	Maximum rapid	200 ipm	200 ipm
Fixture offsets for multiple setups	Yes	Yes	Limit switches	Yes	Yes
Spindle analog output for spindle inverters	Yes	Yes	DRAM upgrade to 64MB	Yes	Yes
Programming and programming tools			CAN-bus I/O interface	Yes	Yes
Conversational language (not g-code)	Yes	Yes	Hard drive	Yes 8GB	Yes 8GB
DXF converter (Optional)	Yes	Yes	Serial printer port	Yes	Yes
Polar and cartesian programming	Yes	Yes	DC servo motors	32" / lbs	32" / lbs
Math calculator	Yes	Yes	Canned cycles		
Help graphics	Yes	Yes	Full bolt hole pattern	Yes	Yes
G-code to conversational converter	Yes	Yes	rectangle pocket milling	Yes	Yes
Right triangle calculator	Yes	Yes	Circular pocket milling	Yes	Yes
Geometry calculator	Yes	Yes	Irregular pocket milling	Yes	Yes
Graphics			Frame pocket milling	Yes	Yes
Isometric, XY, YZ, XZ views	Yes	Yes	Basic drilling	Yes	Yes
Real time graphics	Yes	Yes	Boring	No	Yes
View and zoom sections of program	Yes	Yes	Helical	No	Yes
Automatic fit to screen	Yes	Yes	Mirror, scale, rotate a subroutine	Yes	Yes
Display tool	Yes	Yes	Partial bolt hole pattern	Yes	Yes
Compensations			Rectangle hole pattern	Yes	Yes
Backlash compensation	Yes	Yes	Hole milling	Yes	Yes
Linear compensation	Yes	Yes	rectangular profile (inside or outside)	Yes	Yes
Leadscrew compensation (direct input)	Yes	Yes	Circular profile (inside or outside)	Yes	Yes
Computer and Hardware			Face milling	Yes	Yes
Computer	Pentium 166 MMX	Pentium 166 MMX	Ellipse	Yes	Yes
DRAM	4 MB	8 MB	Spiral & Helical Spiral	Yes	Yes
Floppy disk drive	Yes	Yes	Chipbreaker drilling	No	Yes
RS-232	Yes	Yes	Peck drilling	No	Yes
Z-axis summing	Optional	No	Mold rotation (any axis)	No	Yes
Optional third axis DRO for quill modular design	Yes	N / A	Elbow milling	No	Yes
	Yes	Yes	Tapping	No	Yes

MACHINE OPTIONS • Offline Programming Software • Remote Stop/Go Switch • Remote MPG • Linear Encoder feedback • Auto Lube • Programmable R.P.M. Control

Specifications

Item	E-mill 3VS	E-mill 3VK	E-mill 3VKH	E-mill 5VK	Bed-mill 1350	Bed-mill 1454
Working surface	9" x 42" 9" x 49"	10" x 50"	10" x 50" 10" x 54"	10" x 50" 10" x 54"	13" x 50"	14" x 54"
Longitudinal travel	25 5/8" 28"	28"	27" 31"	27" 31"	32"	40"
Cross travel	12"	15-1/2"	16"	16"	19"	24"
Vertical knee travel	16"	16"	19"	19"	23"	28"
Ram travel	12"	20"	20"	20"	-	-
T-slot #, size	3, 5/8"	3, 5/8"	3, 5/8"	3, 5/8"	3, 5/8"	3, 5/8"
Main motor	3HP	3HP	3HP	5HP	5HP	5HP
Head moves right to left	90°	90°	90°	90°	90°	90°
Head tilts front to back	45°	45°	45°	-	-	-
Spindle speed	60 ~ 4500	60 ~ 4500	60 ~ 4500	50 ~ 3750	50 ~ 3750	50 ~ 3750
Spindle taper	R-8/N.T.30	R-8/N.T.30	R-8/N.T.30	N.S.T. #40	N.S.T. #40	N.S.T. #40
Power quill feeds (In/Rev.)	0.0015", 0.003", 0.006"	0.0015", 0.003", 0.006"	0.0015", 0.003", 0.006"	0.0015", 0.003", 0.006"	0.0015", 0.003", 0.006"	0.0015", 0.003", 0.006"
Quill diameter (chromed)	3-3/8"	3-3/8"	3-3/8"	4"	4"	4"
Quill travel	5"	5"	5"	5"	5"	5"
Weight approximated	2380 lbs. 2430 lbs.	3050 lbs.	3300 lbs. 3450 lbs.	3500 lbs. 3650 lbs.	7040 lbs.	7800 lbs.
Floor Space (LxWxH)	87"x59"x88"	96"x62"x89"	94"x63"x94"	94"x63"x94"	100"x70"x105"	100"x74"x110"



Acer/Springwood Industrial, Inc.
 1062 N. Kraemer Place
 Anaheim, CA 92806
 Tel • 714-632-9701
 Fax • 714-632-9730

Acer/Kilm Industrial, Inc.
 244 N. Randolphville Rd.
 Piscataway, NJ 08854
 Tel • 732-752-9100
 Fax • 732-752-9101