

ACER

Supra Mini CNC Bed-mill
For Today and Tomorrow.

Factory Fit with FAGOR  8055i/A CNC CONTROL

Special
Introductory Price
\$29,950

SUPRA®
Go Easy Go Fast



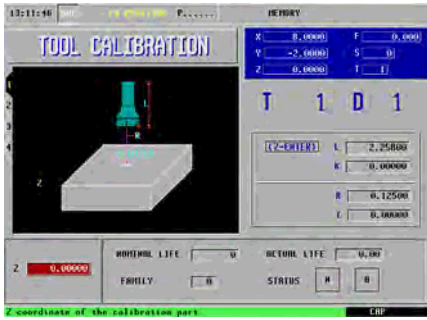
Springwood Industrial, Inc.
1062 N. Kraemer Place
Anaheim, CA 92806
714-632-9701
info@aceronline.net

ACER
www.aceronline.net

Klim Industrial, Inc.
244 N. Randolphville Rd
Piscataway, NJ 08854
732-752-9100
acer_klim@yahoo.com

Powerful

Simple to most complex programming with ease

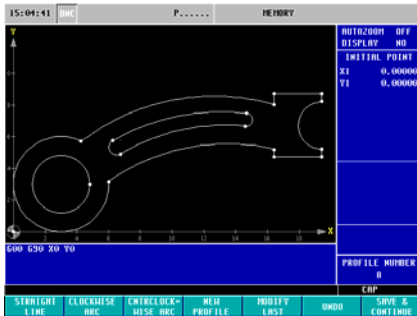


Tool Calibration

- Easy 2 keys tool setup. Touch tool on part and press Z and ENTER.

Simple Cycles (6)

- Slot Milling
- Ring Milling
- External & Internal Threading
- Rectangular Groove
- Engraving
- Part Skew



Profiling Cycle (2)

- Mini Cad system allows you to input drawings and it automatically generates a G-code program.

Surface Milling

- Surface mill in one or two directions across X or Y axis.

Grooving

- Grooving in different X Y planes.

Simple 2D & 3D Pockets

- Define 2D or 3D pockets using interactive graphic screen.

Bosses (2)

- Rectangular and Circular bosses. Option to choose machining directions(up or down)

Pockets (4)

- Rectangular & Circular pockets from simple to most complex.

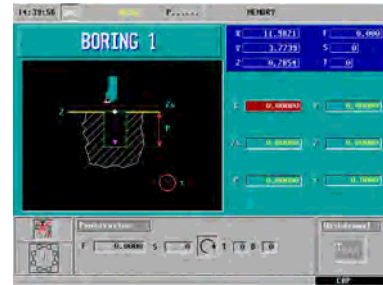


Drilling (5)

- 5 easy setup drilling styles to fit your machining needs. (Peck, return increment, center punch, etc.)

Tapping (2), Reaming, Boring

- Easy to use tapping, reaming, and boring cycle. Define positions, feed and speed, and press cycle start.

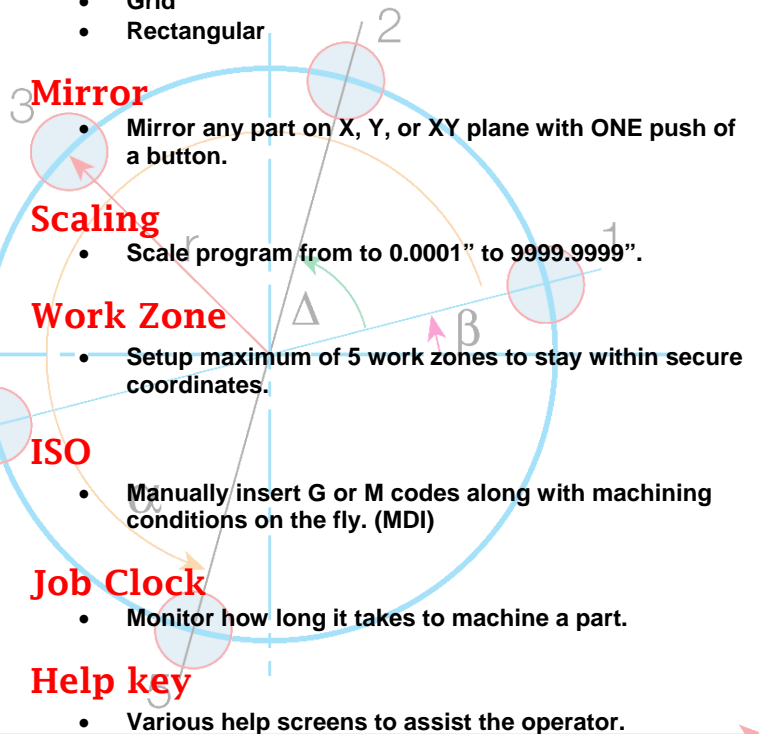


Re-positioning Cycle (2)

- Used to re-position your table allowing you to change parts and or tools.

Positioning Pattern Cycles (Used for Drilling, Tapping, Reaming, Boring, and Pocket operations)

- Random
- Linear
- Bolt hole
- Grid
- Rectangular



Feed rate override

- Adjust your feed rate from 2% to 120% on the fly while the program is running.

Jogging style

- Use either your hand wheel or keyboard axis keys to jog axes.

Graphics

- 3D & 2D solid and tool path graphics for fast simulation.

DRO/CNC

- ONE button allows you to shuffle from CNC and DRO mode.

2/3 Axis

- Easily switch from full 3 axis to 2 axis.

Tool change position

- Setup a desired tool change location for all of your tool changes.

Conversational to G-code

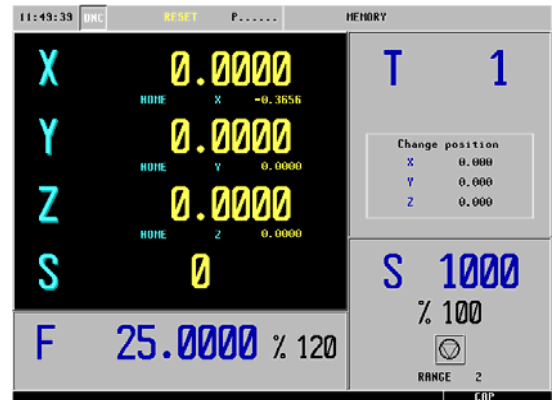
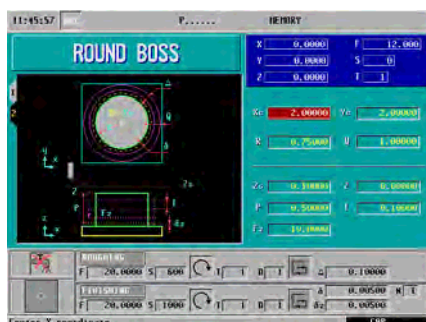
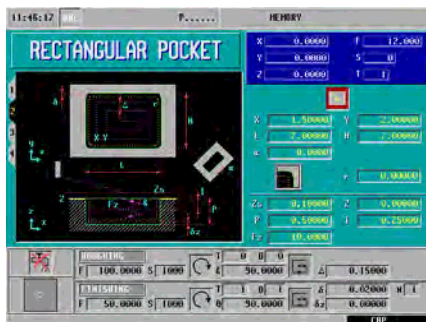
- ONE button can convert your conversational program to a full G-code program.

20 Work Zero Offsets & 255 tool offsets

- Set different part zero offsets & tool offsets with ease.

Coordinate rotation

- Rotate a portion or the complete program to a specific angle.



Single key BACKUP/RESTORE

- ONE key backup or restore to save all CNC parameters, programs, etc.

Telediagnosis

- Instant service through RS232 or Ethernet (optional). Fagor technicians can troubleshoot your Acer machine remotely.

512 MB flash memory (2GB option)

- Can store programs from 0-999999.

USB port

- Easy program uploading/downloading. (Ethernet optional)

Display

- 11" high resolution TFT Industrial LCD monitor. Viewable from any angle!

Keyboard

- Full alpha numeric keyboard with shortcut keys.

Dedicated ICON Programming Keys

- One button, One operation. (Graphics, milling, drilling, etc.)

WinDNC

- Free software to convert DXF files, drip feed programs, and transfer files to and from the CNC. (RS232 or Ethernet)



ACER CNC Mini Bed-mill

Comes with the ACER Most popular E-mill 5VK Head



Inverter Drive & Motor with Fan Cooling System that Dissipates Heat Efficiently

Auto Lubrication System

Precision Harden & Ground Ways with Turcite B

Precision Class 5 Ballscrews

Precision Ground Guide Line to .0002"

Turcite-B Coated Saddle Ways

Machine can Run Auto, Semi Auto and Manually

FAGOR CNC & Operator Console

X, Y & Knee Axes are Hardened & Ground to HRC 52 degrees

Machine can Run Single and Three Phase

Hardened & Ground Table to HRC 52 degrees

Licensed Meehanite Casting

Dish-in Coolant Base

100% Made in Taiwan

Specifications

Model		e-1050B	e-1054B
Table	Table Size	10"x50" (254x1270mm)	10"x54" (254x1372mm)
	T-Slots	3 x 5/8" (16mm)	
	Table Load	1320 lbs (600kgs)	
Travel	X Axis Max./Rapid Feed	27.5"(700mm)/200ipm	31.5"(800mm)/200ipm
	Y Axis Max./Rapid Feed	20"(500mm)/200ipm	
	Z Axis Max./Rapid Feed	20.87"(530mm)/200ipm	
	Max Spindle Nose to Table	5.31"(135mm)~25.39" (645mm)	
	Spindle Center to Column Face	23.62" (600mm)	
Spindle	Quill Diameter	4" (100mm)	
	Quill Travel	5" (127mm)	
	Spindle Taper	CAT #40 (NST 40 Optional)	
	Spindle Speed Hi/Low RPM	500~3750 / 0~500	
	Spindle Feed-3 ranges in(mm)/rev.	0.0015", 0.003", 0.006" (0.15, 0.04, 0.08mm)	
	Spindle Rotation Angle	±45°	
Motor	Spindle HP	5	
	X/Y/Z Axis Servo Motor	DC 31.3 In-lb.	
	Coolant Pump HP (Option)	1/8	
Power	Control	110V/1P/15A	
	Machine	230V 3 Phase or Single Phase, 20A (440V Optional, 10A)	
Dimension	Footprint of Machine	72.44"x78.74"x100"	76.44"x78.74"x100"
Weight	Gross Approx.	4609 lbs (2095 kgs)	4758 lbs (2163 kgs)
Packing Dimensions	X x Y x Z inch	61.02"x70.08"x88.58"	64.96"x70.08"x88.58"

Note: The manufacturer reserves the right to modify the design, specifications, mechanisms, etc. to improve the performance of machine without notice. All the specifications shown above are for reference only.