



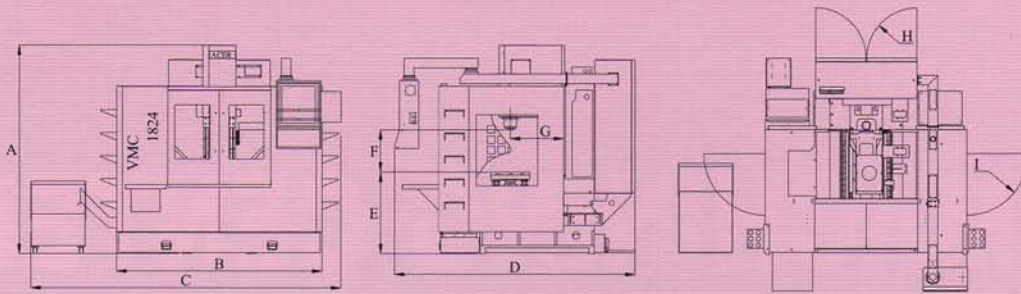
Technology • Creativity • Reliability  
An Unswerving Commitment to Excellence

# ACER MACHINING CENTER



**VMC-1824**





A	98.42"	2500 mm
B	84.64"	2150 mm
C	149.6"	3800 mm
D	102.36"	2600 mm
E	33.46"	850 mm
F	25.82"	656 mm
G	19.68"	500 mm
H	23.62"	600 mm
I	25.19"	640 mm

## SPECIFICATIONS

MODEL	VMC-1824
Travel (X / Y / Z)	24" / 18" / 19"
Spindle motor	15 HP (30 min peak); 10 HP continuous
<b>Spindle</b>	
Spindle speed	60~8,000 rpm
Spindle taper	CAT#40 or BT#40
Spindle nose to table	6.5"~25.82"
Spindle center to column	19.68"
<b>Tool change</b>	
Tool capacity	24 pockets
Max. tool diameter/weight (ea)	3.15" / 15 lbs
<b>Feedrates</b>	
Rapids (X,Y,Z)	945 / 945 / 945ipm / option 1181 / 1181 / 945 ipm
Cutting	393 ipm
<b>Table</b>	
Table size	27.55" x 17.71"
T-slots(#/width/distance)	3 / 0.708" / 4.92"
Table load	660 lbs
<b>Accuracy</b>	
Positioning	± 0.0002"
Repeatability	± 0.00012"
<b>General</b>	
Floor space	149.6" x 102.36" x 98.42"
Air Required	96 PSI
Weight (net /gross)	8,800 lbs / 9,320 lbs

Note: The manufacture reserves the right to modify the design, specifications, mechanisms, etc. to improve the performances of machine without notice.  
All the specifications shown above are for reference only.

## STANDARD ACCESSORIES

- |                                  |   |                                 |
|----------------------------------|---|---------------------------------|
| 1. 24 station ATC(arm type)      | 7. Leveling pads & bolts                  | 12. Full enclosure splash guard |
| 2. Rigid tapping                 | 8. Tool box with tool                     | 13. Lubrication system          |
| 3. Coolant pump and nozzles      | 9. 15 KVA transformer                     | 14. Three axes linear guide way |
| 4. Halogen light                 | 10. X,Y,Z axis telescopic steel way cover | 15. Floating air tool change    |
| 5. Electrical maintenance manual | 11. Anilam 6,300 M control                | 16. Open door power disconnect  |
| 6. Operation manual & parts list |   | 17. Tool holder rack-60 pcs     |

Web site: <http://www.acergroup.com>

Factory E-mail Address: [ufau0014@ms5.hinet.net](mailto:ufau0014@ms5.hinet.net)

**SPRINGWOOD INDUSTRIAL, INC.**

1062 N. Kraemer Place

Anaheim, CA 92806

Tel: (714) 632-9701

Fax: (714) 632-9730

**KLIM INDUSTRIAL, INC.**

244 N. Randolphville Rd.

Piscataway, NJ 08854

Tel: (732) 752-9100

Fax: (732) 752-9101

**TAIWAN SPRINGWOOD INTERNATIONAL, INC.**

No.101, 506 Lane, Seng Tso Rd.

Seng Karng Sharnq, Taichung County, Taiwan

Tel: 011886-4-2520-4120 Fax: 011886-4-2520-4123

LA E-mail Add: [info@acergroup.com](mailto:info@acergroup.com)

NJ E-mail Add: [klim@acergroup.com](mailto:klim@acergroup.com)