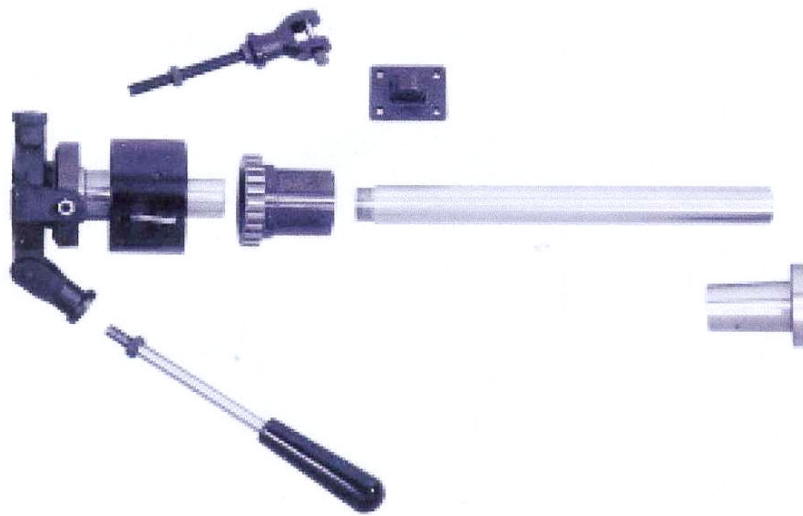


# OWNER'S MANUAL

## COLLET CLOSER

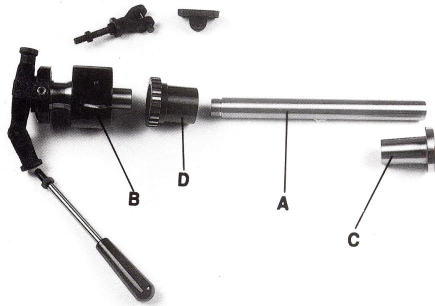


## Warnings

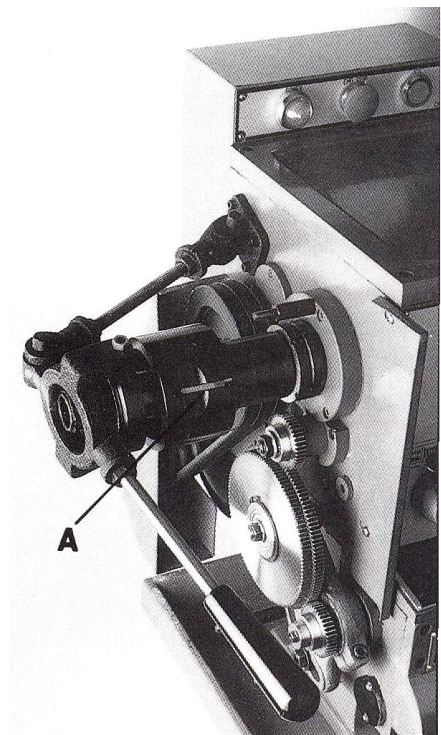
1. Read and understand the entire owners' manual before attempting assembly or operation.
2. Read and understand warnings posted on the machine and in this manual. Failure to comply with all of these warnings may cause serious injury.
3. Replace warning labels if they become obscured or removed.
4. This band saw is designed and intended for use by properly trained and experienced personnel only. If you are not familiar with the proper and safe operation of a band saw, do not use until proper training and knowledge have been obtained.
5. Do not use this band saw for other than its intended use. If use for other purposes, we disclaims any real or implied warranty and holds itself harmless from any injury that may result from that use.
6. Always wear approved safety glasses/face shields while using this machine. Everyday eyeglasses only have impact resistant lenses; they are not safety glasses.
7. Before operating this machine, remove tie, rings, watches, and other jewelry, and roll sleeves up past the elbows. Remove all loose clothing and confine long hair. Non-slip footwear is recommended. Do not wear gloves.
8. Wear ear protectors (plugs or muffs) during extended periods of operation.
9. Some dust created by power sanding, sawing, grinding, drilling and other construction activities contain chemicals known to cause cancer, birth defects or other reproductive harm. Some examples of these chemicals are :
  - Lead from lead based paint.
  - Crystalline silica from bricks, cement and other masonry
  - Arsenic and chromium from chemically treated lumber.
10. Your risk of exposure varies, depending on how often you do this type of work. To reduce your exposure to these chemicals : work in a well-ventilated area and work with approved safety equipment, such as fac or dust masks that are specifically designed to filter out microscopic particles.
11. Do not operate tool while tired or under the influence of drugs, alcohol or any other medication.
12. Make certain the switch is in the **OFF** position before connecting the machine to the power supply.
13. Make certain the machine is properly grounded.
14. Make all machine adjustments or maintenance with the machine unplugged from the power source.
15. Remove adjusting keys and wrenches. Form a habit of checking to see that keys and adjusting wrenches are removed from the machine before turning ti on.
16. Keep machine guards in place at all times when the machine is in use. If removed for maintenance purposes, use extreme caution and replace the guards immediately.
17. Make sure the band saw is firmly secured to the floor before use.

**This means that if precautions are not heeded, it may result in minor or moderate injury and/or possible machine damage.**

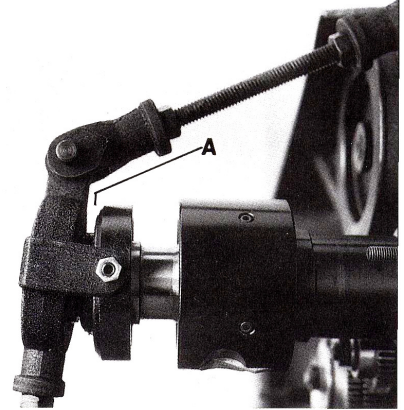
## **Assembly**



1. Disconnect the machine from the power source.
2. Unpack and clean all rust protected surfaces with a mild solvent or kerosene. Do not use paint thinner, lacquer thinner, or gasoline. These items will damage painted surfaces.
3. Turn cam locks to remove the chuck.
4. Remove the chuck and place it on a piece of wood.
5. Clean the spindle nose and internal taper thoroughly.
6. Open the headstock door. Screw the spindle adapter into the spindle threads.
7. The run out on spindle adapter should be 0.005" or less. Adjustments can be made by three hex socket cap screws.
8. Thread the drawbar into the collet closer assembly until it is flush with the assembly.
9. Slide collet closer assembly into spindle. Make sure it completely engages castled gear on the spindle adapter.



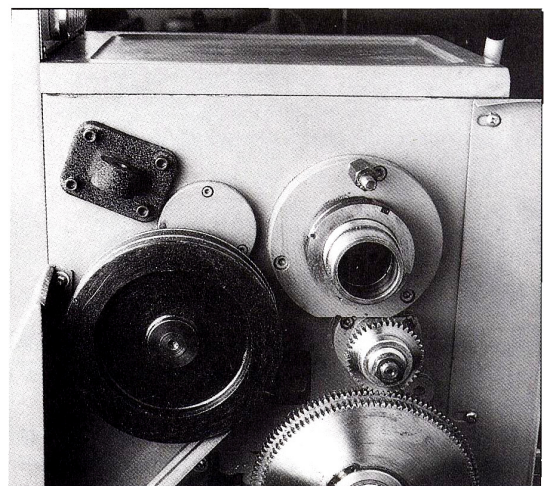
10. Screw collet closer into collet by releasing collet closer lock and turning collet closer clockwise.  
**Note** : It is necessary to push collet in while turning closer body to engage draw bar with the collet. Continue turning until the collet taper is seated (but not tensioned) in the taper.
11. Assemble all linkage and attach to collet closer body.



12. With the help of another person, hold the collet closer in position with the mounting foot against the headstock.  
**Note** : The bearing shaft should be centered in the bearing body.

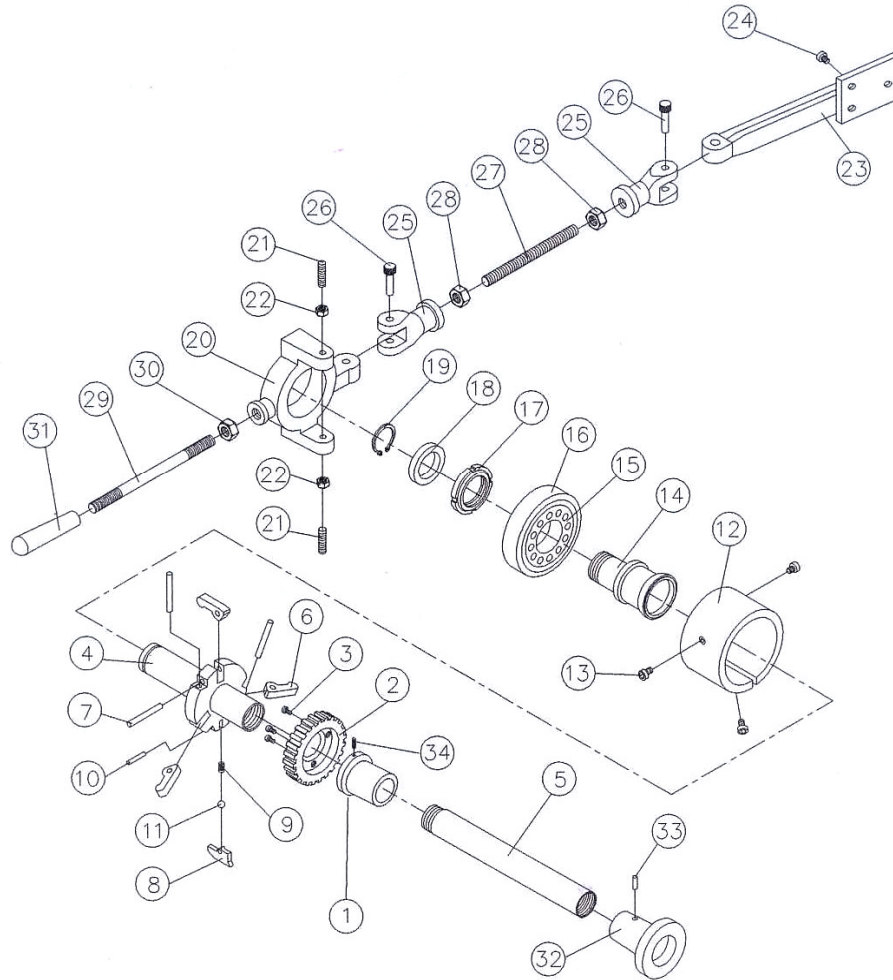
### **Exploded View**

13. Once the location of the foot has been determined use a transfer punch to mark the location of four mounting holes.
14. Tap drilled holes with a 1/4"-20 plug tap. Finish the holes with a 1/4"-20 tap.
15. Install foot to headstock with four 1/4"-20 x 3/4" hex socket cap screws.



16. Connect all linkage and adjust for proper operation.
17. Place a cutter or material into the collet so you can adjust the outward flange. Turn the outward flange until you can move the lever and it "pops" into place locking the cutter or material into the collet.

18. Check damaged parts. Before further use of the machine, a guard or other part that is damaged should be carefully checked to determine that it will operate properly and perform its intended function-check for alignment of moving parts, binding of moving parts, breakage of parts, mounting, and any other conditions that may affect its operation. A guard or other part that is damaged should be properly repaired or replaced.
19. Provide for adequate space surrounding work area and non-glare, overhead lighting.
20. Keep the floor around the machine clean and free of scrap material, oil and grease.
21. Give your work undivided attention. Looking around, carrying on a conversation and “horse-play” are careless acts that can result in serious injury.
22. Make your workshop child proof with padlocks, master switches or by removing starter keys.
23. Give your work undivided attention. Looking around, carrying on a conversation and “horse-play” are careless acts that can result in serious injury.
24. Do **not** over reach. Maintain a balanced stance at all times so that you do not fall or lean against the drill bit or other moving parts.
25. Use the right tool. Don't force a tool or attachment to do a job for which it was not designed. The right tool will do the job better and safer at the rate for which it was designed.
26. Use recommended accessories; improper accessories may be hazardous.
27. Maintain tools with care. Keep tools sharp and clean for the best and safest performance. Follow instructions for lubricating and changing accessories.
28. Make sure the work piece is securely attached or clamped to the table. Never use your hand to hold the piece.
29. Never brush away chips while the machine is running. Use the correct speed and feed for the tool. Be sure that the tool is the correct one for your operation.
30. Never stand on a machine. Serious injury could occur if the machine tipped or if the drill bit is unintentionally contacted.
31. Never leave the machine running unattended. Turn the power off and don't leave the machine until it comes to a complete stop.



## Parts List

Index No.	Description	Size	Quantity
1	Sleeve Coupling		1
2	Coupling		1
3	Hex Socket Cap Screw		3
4	Arbor		1
5	Draw Bar		1
6	Buckle		3
7	Pin		3
8	Buckling Plate		1
9	Spring		1
10	Pin		1
11	Steel Ball		1

12	Outward Flange		3
13	Hex Socket Cap Screw		3
14	Bearing Shaft		1
15	Ball Bearing		1
16	Bearing Stand		1
17	Locking Nut		1
18	Collar		1
19	Retaining Ring (external)		1
20	Bearing Body		1
21	Set Screw		2
22	Hex Nut		2
23	Fixed Seat (length)		1
24	Hex Socket Cap Screw		3
25	Coupling		2
26	Special Pin		2
27	Screw Bolt		1
28	Hex Nut		1
29	Screw Bolt		1
30	Hex Nut		1
31	Grip		1
32	Sleeve		1
33	Pin		1
34	Set Screw		1