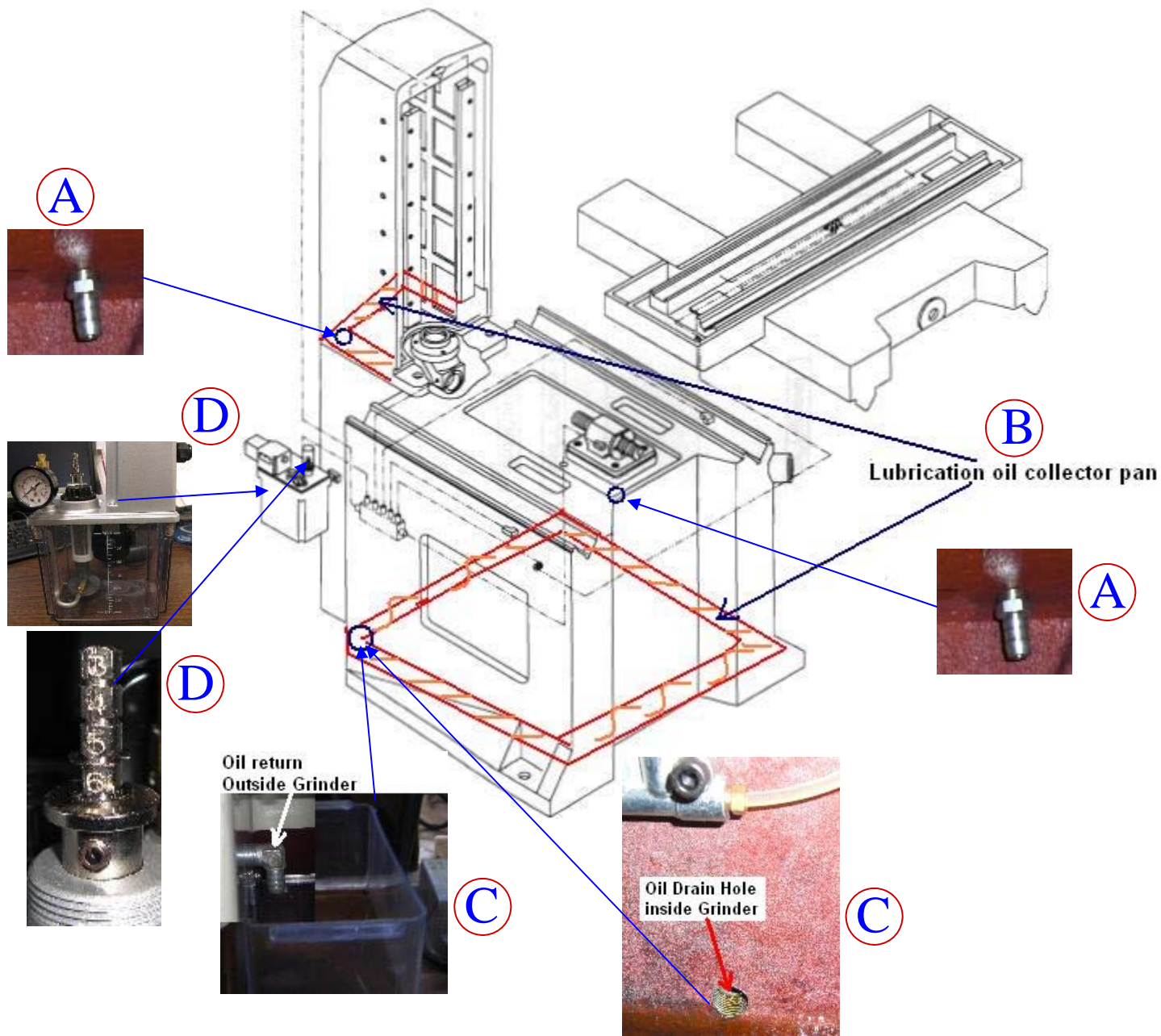


ACER AGS 1020/1224/1632 AHD Oil Leaking Check Procedures



A: Oil Return Pipe inside Grinder - Please make sure there is nothing blocking the oil return pipe.

B: Lubrication Oil Collection Pan - Please make sure the oil level is not overflowing due to the oil draining through A and C.

C: Oil Return Pipe - Please make sure there is nothing blocking the oil return path (inside-hole, outside-oil return pipe).

D: Lubrication Oil Pump - Please adjust the oil volume adjuster to the amount that is optimal to your machine.