









VF 2.0mm<sup>2</sup>X4C NINE 31M 200V  
PE  
R1  
R2  
T1

TOSHIBA

20

RUN  
PRG  
MON

95.2 Hz

MODE  
ENT

RUN STOP

VF-S11  
3PH-200V-3.7kW

中文說明

• 請參閱說明書  
• 請勿在運行中  
• 請勿在運行中  
• 請勿在運行中

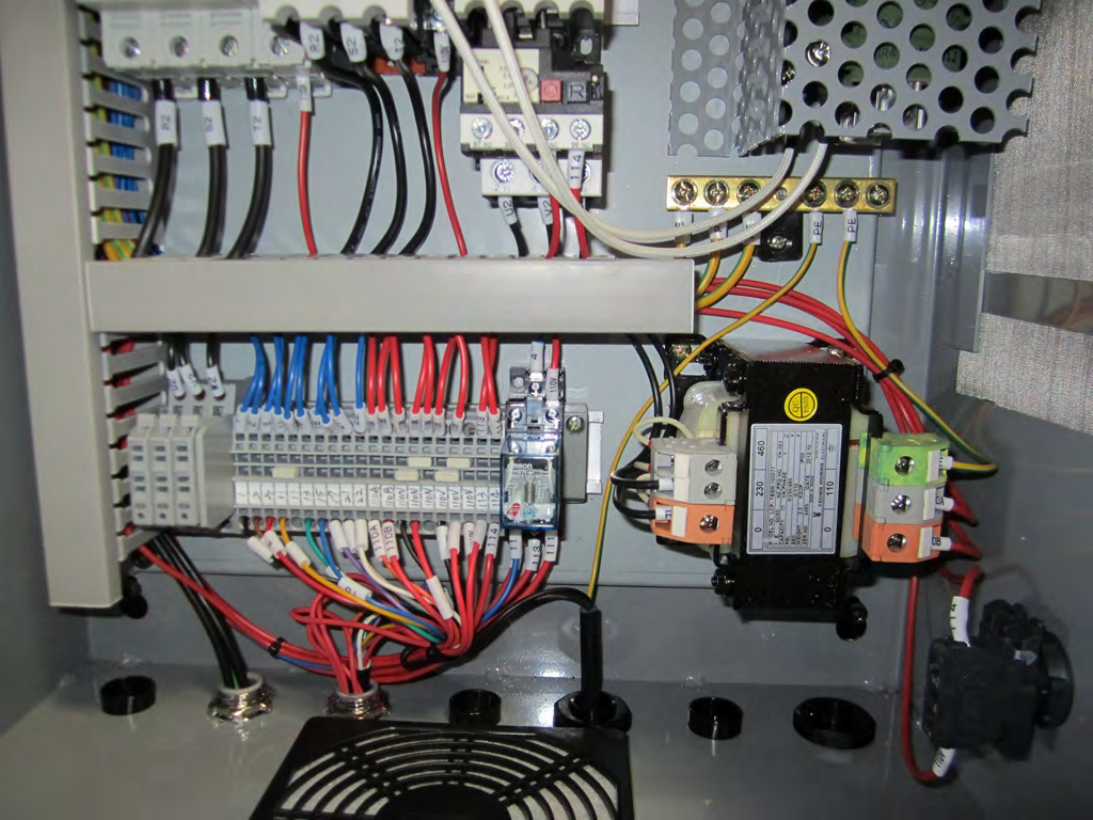
**⚠ DANGER**

Read the instruction manual.  
Do not open the cover while power is applied or for 10 minutes after power has been restored.

**⚠ WARNING**

VF-S11 200V CLASS  
Operation Voltage  
185V-250V only

Terminal block with multiple wires connected to a circuit breaker assembly.



RUN

STOP

VF-S11

200V 200V CLASS

FAIR

1. 200V 200V CLASS

2. 200V 200V CLASS

3. 200V 200V CLASS

4. 200V 200V CLASS

5. 200V 200V CLASS

6. 200V 200V CLASS

7. 200V 200V CLASS

8. 200V 200V CLASS

9. 200V 200V CLASS

10. 200V 200V CLASS

11. 200V 200V CLASS

12. 200V 200V CLASS

13. 200V 200V CLASS

14. 200V 200V CLASS

15. 200V 200V CLASS

16. 200V 200V CLASS

17. 200V 200V CLASS

18. 200V 200V CLASS

19. 200V 200V CLASS

20. 200V 200V CLASS

21. 200V 200V CLASS

22. 200V 200V CLASS

23. 200V 200V CLASS

24. 200V 200V CLASS

25. 200V 200V CLASS

26. 200V 200V CLASS

27. 200V 200V CLASS

28. 200V 200V CLASS

29. 200V 200V CLASS

30. 200V 200V CLASS

31. 200V 200V CLASS

32. 200V 200V CLASS

33. 200V 200V CLASS

34. 200V 200V CLASS

35. 200V 200V CLASS

36. 200V 200V CLASS

37. 200V 200V CLASS

38. 200V 200V CLASS

39. 200V 200V CLASS

40. 200V 200V CLASS

41. 200V 200V CLASS

42. 200V 200V CLASS

43. 200V 200V CLASS

44. 200V 200V CLASS

45. 200V 200V CLASS

46. 200V 200V CLASS

47. 200V 200V CLASS

48. 200V 200V CLASS

49. 200V 200V CLASS

50. 200V 200V CLASS

51. 200V 200V CLASS

52. 200V 200V CLASS

53. 200V 200V CLASS

54. 200V 200V CLASS

55. 200V 200V CLASS

56. 200V 200V CLASS

57. 200V 200V CLASS

58. 200V 200V CLASS

59. 200V 200V CLASS

60. 200V 200V CLASS

61. 200V 200V CLASS

62. 200V 200V CLASS

63. 200V 200V CLASS

64. 200V 200V CLASS

65. 200V 200V CLASS

66. 200V 200V CLASS

67. 200V 200V CLASS

68. 200V 200V CLASS

69. 200V 200V CLASS

70. 200V 200V CLASS

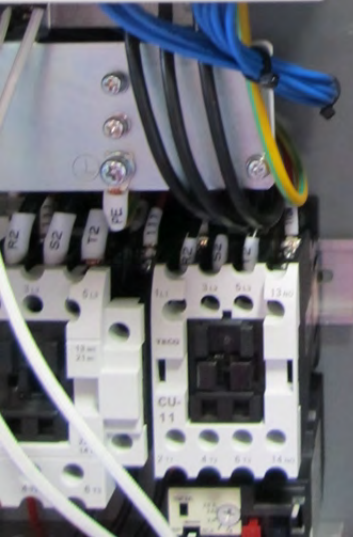


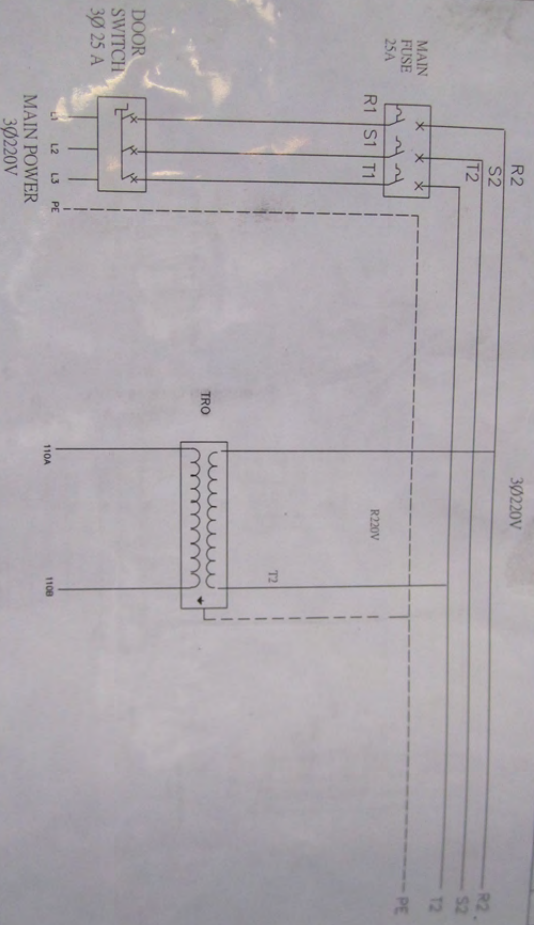
**WARNING**

VF-S11 200V CLASS

Operation Voltage

185v-250v only

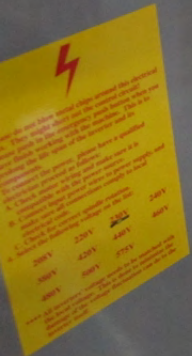




PAGE	ND.	TITLE		POWER CONNECTION		MCH. TYPE	Dwg No.
		DESIGN	TONY	TONY			
PAGE	1	CHECK					







**⚡**

Warning: The electrical system of this vehicle is a 12V DC system. The battery is located in the front of the vehicle. The battery is a lead-acid battery and should be handled with care. The battery is a sealed lead-acid battery and should not be overcharged or discharged. The battery should be kept at a temperature between 32°F and 113°F. The battery should be kept in a well-ventilated area. The battery should be kept away from heat and open flames. The battery should be kept away from children and pets. The battery should be kept away from water. The battery should be kept away from oil and grease. The battery should be kept away from acids and alkalis. The battery should be kept away from flammable liquids and gases. The battery should be kept away from explosive materials. The battery should be kept away from high voltage electrical equipment. The battery should be kept away from high current electrical equipment. The battery should be kept away from high temperature electrical equipment. The battery should be kept away from high pressure electrical equipment. The battery should be kept away from high speed electrical equipment. The battery should be kept away from high frequency electrical equipment. The battery should be kept away from high power electrical equipment. The battery should be kept away from high energy electrical equipment. The battery should be kept away from high voltage electrical equipment. The battery should be kept away from high current electrical equipment. The battery should be kept away from high temperature electrical equipment. The battery should be kept away from high pressure electrical equipment. The battery should be kept away from high speed electrical equipment. The battery should be kept away from high frequency electrical equipment. The battery should be kept away from high power electrical equipment. The battery should be kept away from high energy electrical equipment.

200V	250V	300V	350V
400V	450V	500V	550V
600V	650V	700V	750V

Always use proper safety procedures when working with electrical systems. The manufacturer is not responsible for any damage or injury caused by the use of this equipment. For more information, please contact the manufacturer.



YASKAWA

95.1

VF-S11  
200V-230V

**WARNING**  
100V 200V CLASS  
Operate Voltage  
100V-230V


A terminal block and relay assembly with multiple colored wires (blue, yellow, black, red, white) connected to various terminals. The assembly includes a terminal block with screw terminals and a relay unit with two visible relays.

A terminal block with many colored wires (red, blue, yellow, green, black) connected to it. The wires are bundled together and connected to the terminals.

Small electronic components and modules, including a green module and a white module, connected to the wiring.







1. Please do not blow metal chips around the electrical box. They might short out the control circuit!
2. Please push in the emergency push button when you have finish working with the machine. This is to prevent the life span of the inverter and its components.
3. To prevent the power, please have a qualified electrician proceed as follows:
  - A. Check, secure wiring and make sure it is compatible with the power source.
  - B. Connect input power when no power supply and make sure all connections comply to local electrical code.
  - C. Check the correct output resolution.
4. Select the following voltage on the fan:

208V	230V	240V	240V
380V	420V	440V	480V
800V	900V	975V	

Every 100 temperature voltage needs to be checked with the device voltage. This is due to the change of the material. Furthermore, due to the temperature, there is...

