



Springwood Industrial, Inc.
1062 N. Kraemer Place
Anaheim, CA 92806
Tel: 714-632-9701 Fax: 714-632-9730
<http://www.aceronline.net>

info@aceronline.net

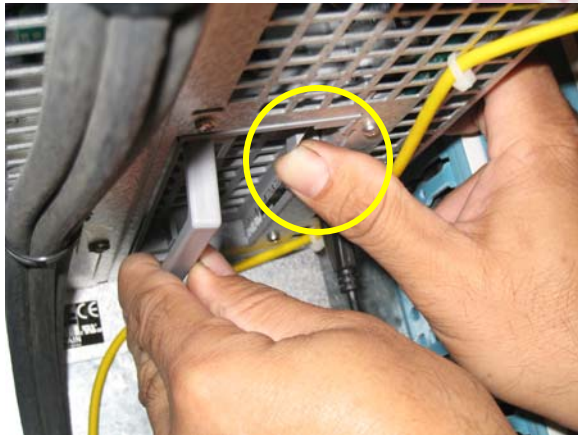
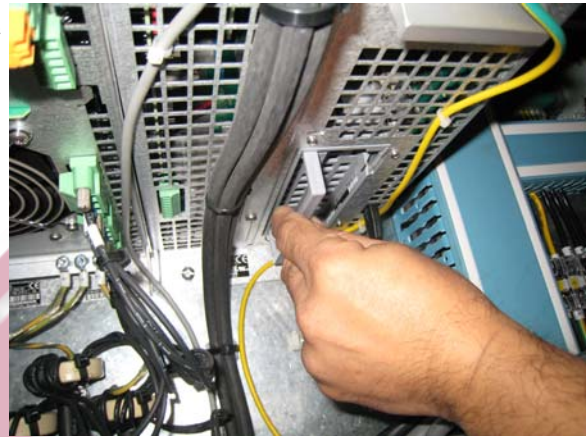
Klim Industrial, Inc.
244 N. Randolphville Road
Piscataway, NJ 08854
Tel: 732-752-9100 Fax: 732-752-9101
<http://www.aceronline.net>

acer_klim@yahoo.com

PROCEDURE TO CLONE A HARD DRIVE FROM AN ANILAM CONTROL

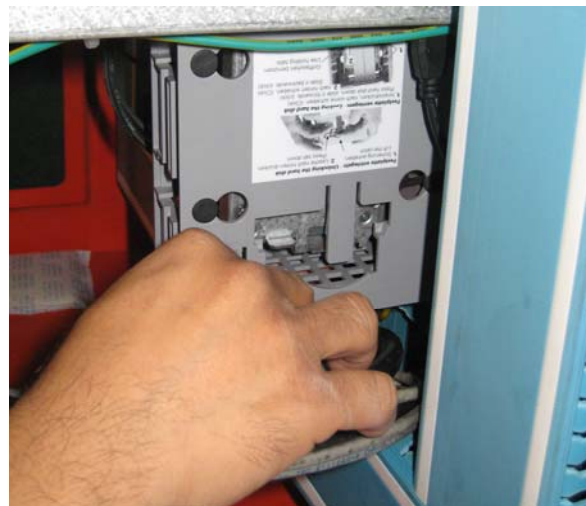
Removal of hard drive from machine's chassis

1. Pull hand down on the bottom of the hard drive on the bottom of the chassis.



2. Use right thumb to release the latch, push towards the hard drive handle.

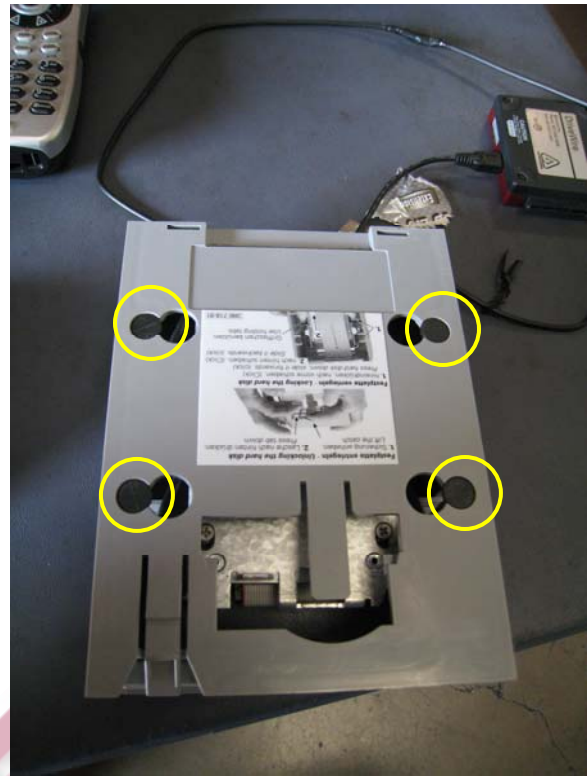
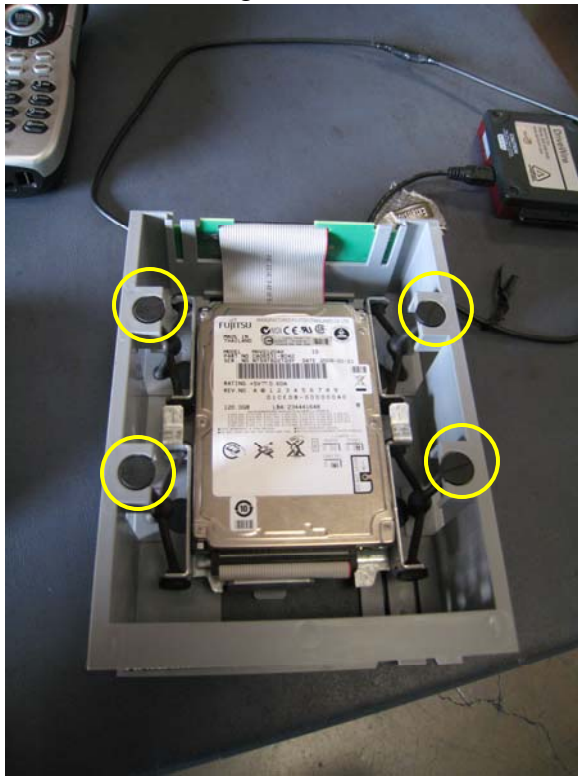
This picture on the right shows the direction of how the hard drive is inserted.



3. Pull down on handle and remove hard drive.

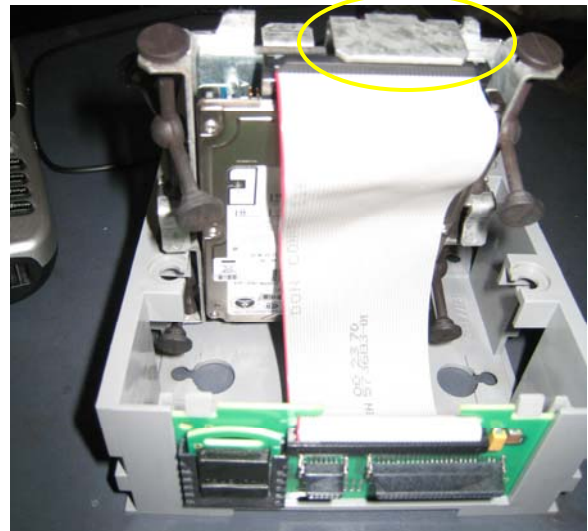
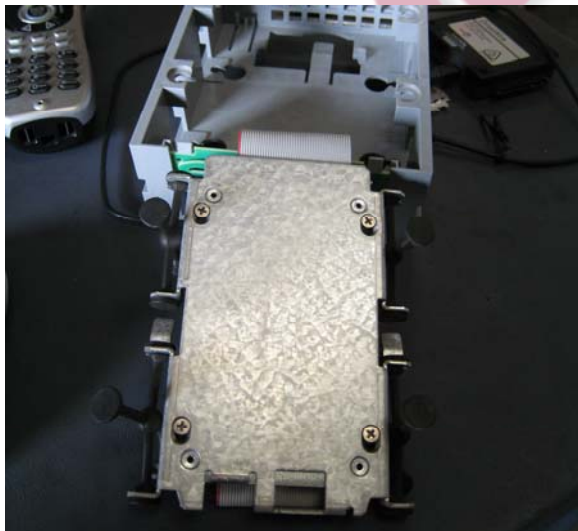
Removal of hard drive from plastic holder.

1. Remove all eight rubber attachments, circled items.



Do not attempt to take off the IDE cable yet, (the grey wired cable with one red cable) that will come later.

2. Flip the hard drive over. Unscrew the four screws on the back of the metal case. This will separate the metal hard drive case with the hard drive. (The reason you could not remove the IDE cable at first was because of the circled piece.) Notice that it is on the same side as the IDE cable.

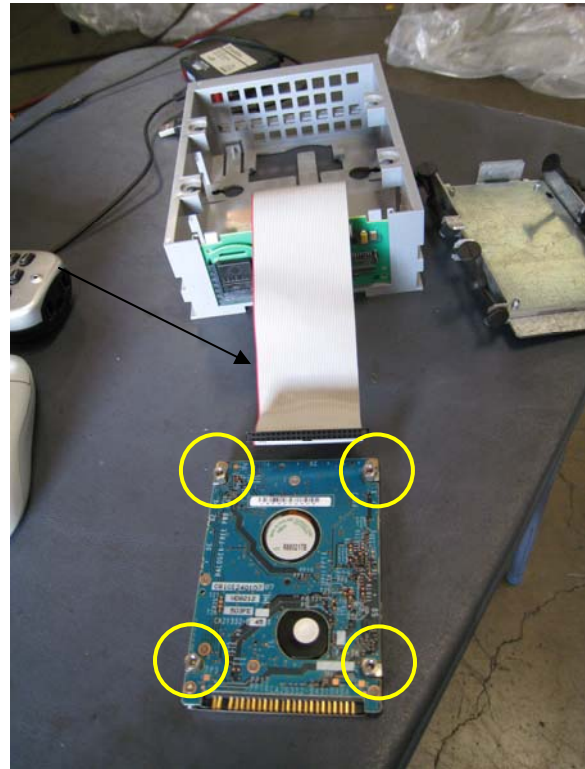


- Carefully pull off the IDE cable. Notice which side the red lined cable on the IDE cable is corresponding to the hard drive. (The hard drive is upside down in the picture.) It is also recommended not to place the hard drive face up, but rather face down like in this picture.

Important: *If using two hard drives, remember which hard drive is the original or label each hard drives. If you wish, mark the hard drive(s), or stick a label on the hard drive(s).*

Optional: Remove the four screws on the hard drive, circled. *This step is only necessary if you are going to insert and swap another hard drive.* If another hard drive is going to be swapped in the Anilam chassis, then put these four screws onto the new hard drive.

You are now ready to use the hard drive.



Software and equipment necessary to proceed with the following directions:

- Buy Apricorn Universal Hard Drive Adapter
- Buy Acronis True Image 11 Home.

Install Acronis True Image 11 Home with default software settings on any computer or laptop. The advantage of installing the software on a laptop is so the laptop can be put near the machining center for quick access.

After the installation of Acronis True Image 11 Home is complete, connect the hard drive you removed from the machining center to 2.5" Drive PATA Connector on the Universal Hard Drive Adapter. Read the "Connecting Your DriveWire" section in the documentation provided by the Apricorn Universal Hard Drive Adapter.

Formatting a Brand New Hard Drive

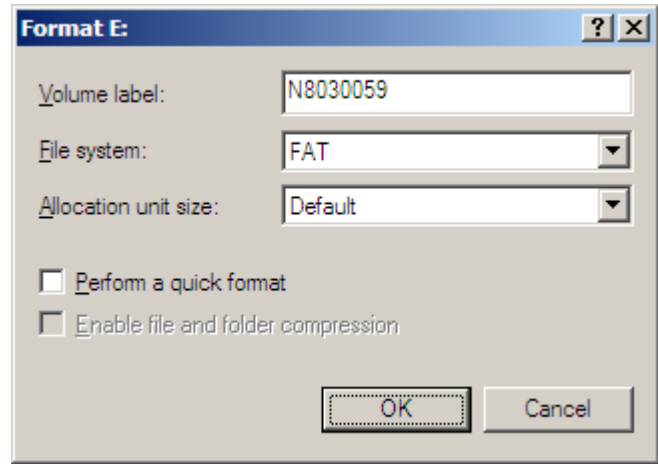
IMPORTANT: THESE FOLLOWING STEPS ARE ONLY TO BE DONE IF YOU PURCHASE A BRAND NEW HARD 2.5" DRIVE PATA HARD DRIVE.

THIS STEP IS FOR THE NEW HARD DRIVE, NOT THE ORIGINAL ONE FROM THE MACHINE. BE CAREFUL, DO NOT FORMAT THE ORIGINAL HARD DRIVE, IF YOU DO, YOU WILL NOT BE ABLE TO CLONE THE HARD DRIVE TO THE NEW HAR DRIVE!!!

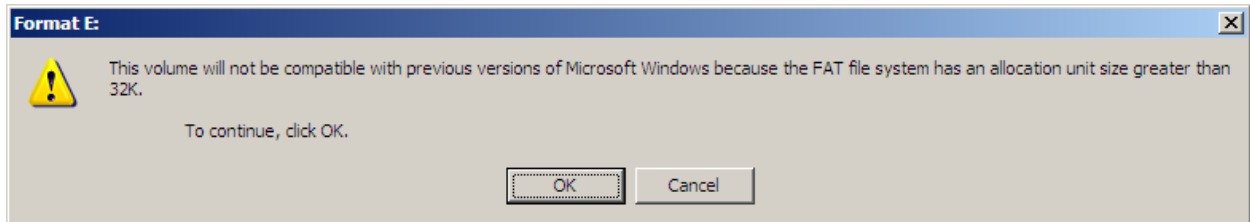
Please follow these steps on this Microsoft website, for the first section ONLY...

<http://www.microsoft.com/windowsxp/using/setup/tips/advanced/ntfs.mspx>

EXCEPT... on step 9 on Microsoft's directions, label it something else, (not Backup Drive). I am not sure where this label actually shows up in the end. Maybe label it the serial number of the machine. AND for File system: choose FAT, then click "OK".

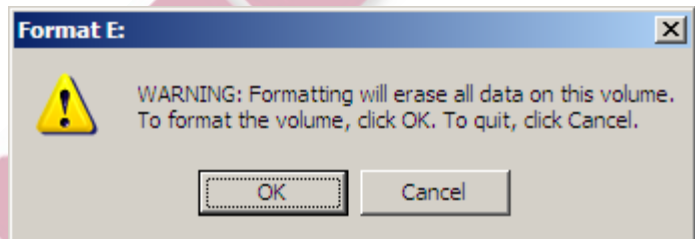


You may get a message that says this:

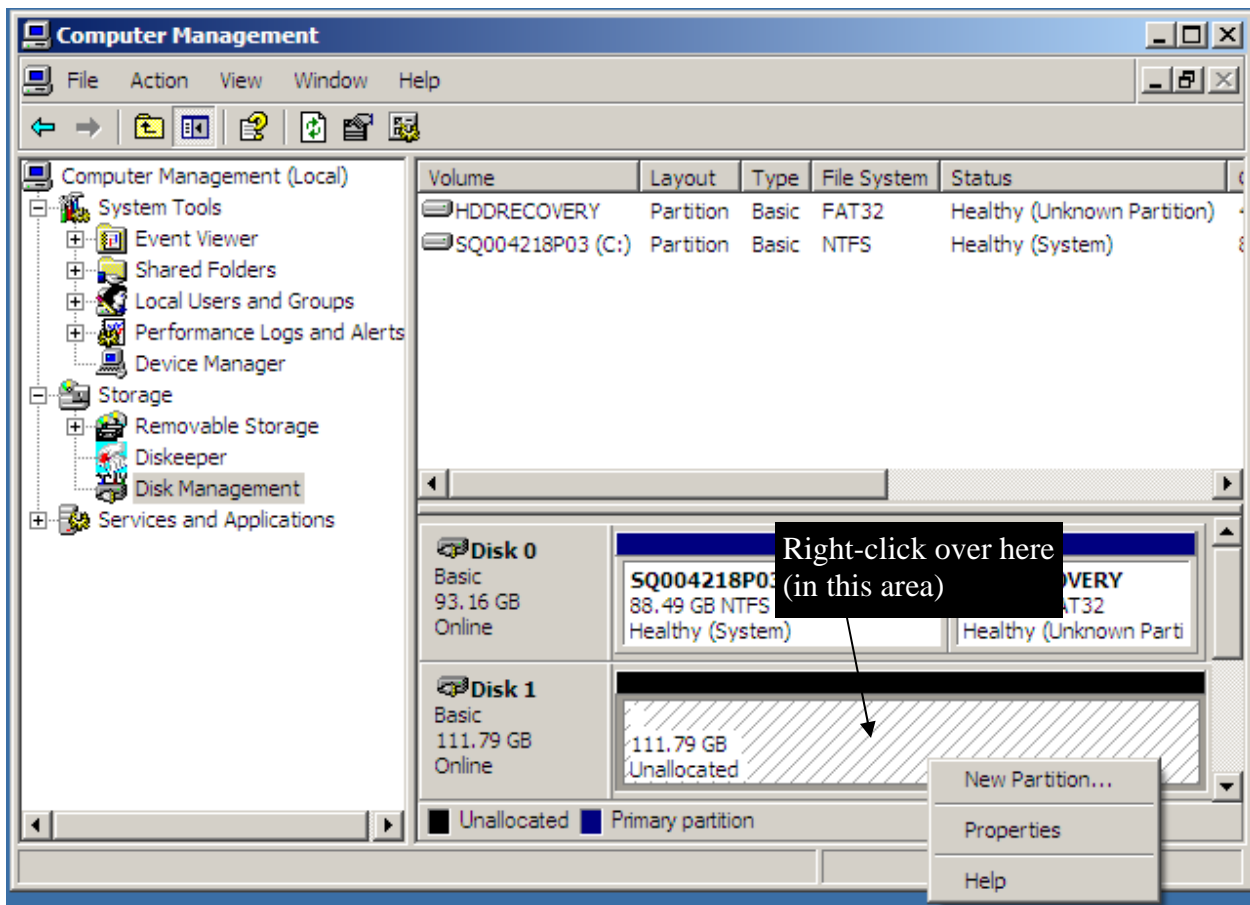


If you do, please click “OK”.

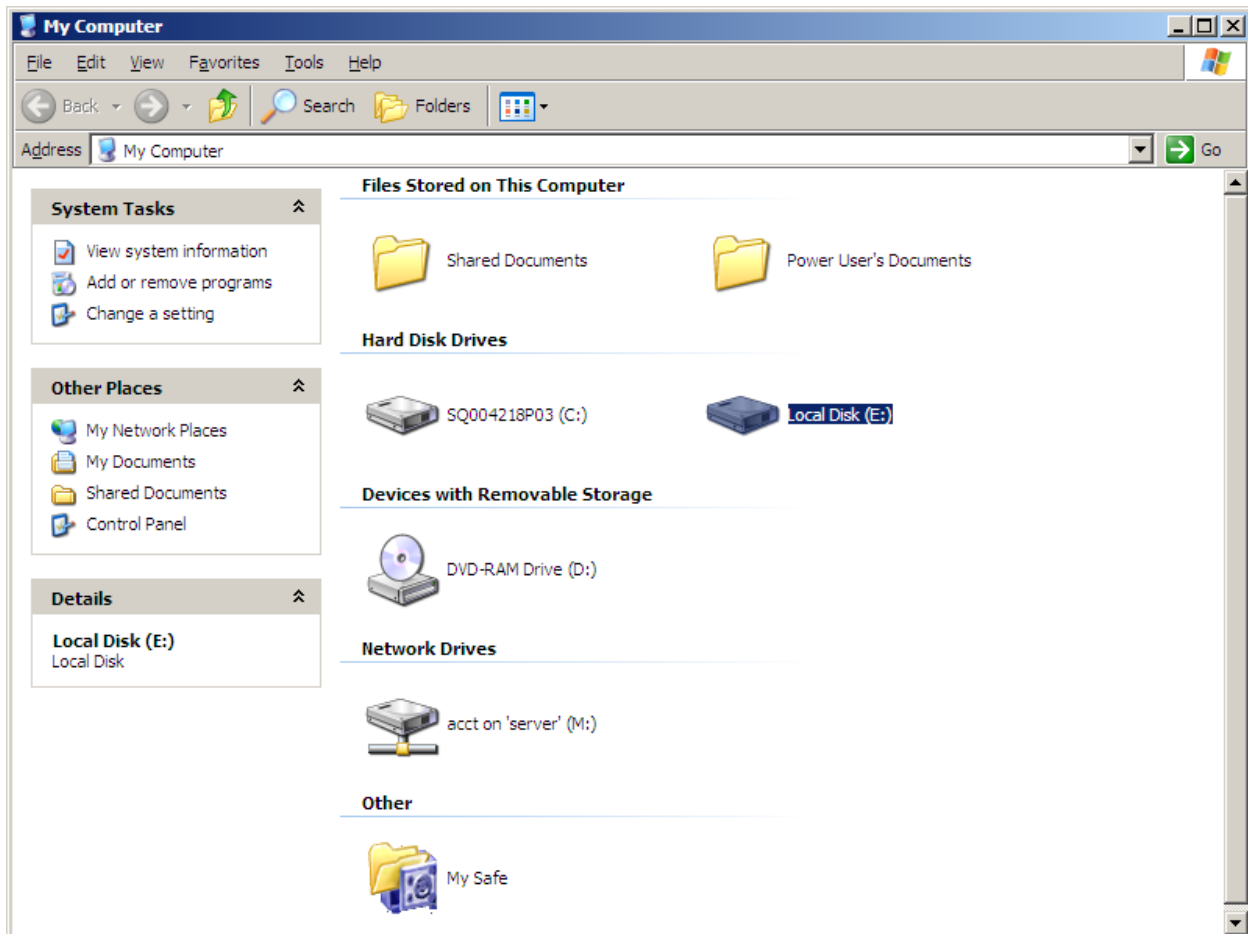
The last step is the same as Step 10, click “OK”.



1. Click “Start, right-click “My Computer”, and then click “Manage”.
2. Under “Storage” click “Disk Management”.
3. Right-click on the right of the Disk 1 area (my computer puts it as Disk 1). *[I know it is there because of the GB size. (My hard drive is a total of 120 GB, so it is a little less than that. Also, it says Unallocated.) A dropdown menu will appear. Click “New Partition...”]*



4. Click "Next".
5. Select "Primary partition", and click "Next".
6. If the default Partition size in MB is not the maximum size, type in the maximum size. Click "Next".
7. Assign the following drive letter: to E, click "Next".
8. Click "Next" then click "Finish".
10. Wait for the hard drive to finish formatting; it may take a while, depending on the size of the hard drive, probably around 30 minutes to an hour.
11. If you receive an message saying that it did not successfully format or something like that, click "OK".
12. Go back to "My Computer", locate the new hard drive. In my case it is the E: drive. Double-click the E:



13. If the hard drive can open and is blank, the next steps are not necessary. If there you are prompted to ask you if you need to format the hard drive, follow the following directions.

14. Click “Yes” and then click “Start”.

16. Click “OK”. This format will take a while, 30 minutes to an hour.

17. Click “OK”.

18. Go back to “My Computer” and see if you can double click the new hard drive. If it opens to a blank hard drive, then everything is good. Please go on to the next steps. *If it does not you did not format the hard drive correctly, try again. If you try the second time to format, and you cannot open the new hard drive, then maybe the hard drive is corrupt.*

If the hard drive is already preformatted, and you successfully connect the Universal Hard Drive Adapter to the computer (with the control’s hard drive connected), you can click “Cancel” when the window pops up.

If you followed the Formatting a Brand New Hard Drive steps, and have not turned off the power to the Universal Hard Drive Adapter, you can follow the next steps without worrying about the popup window.

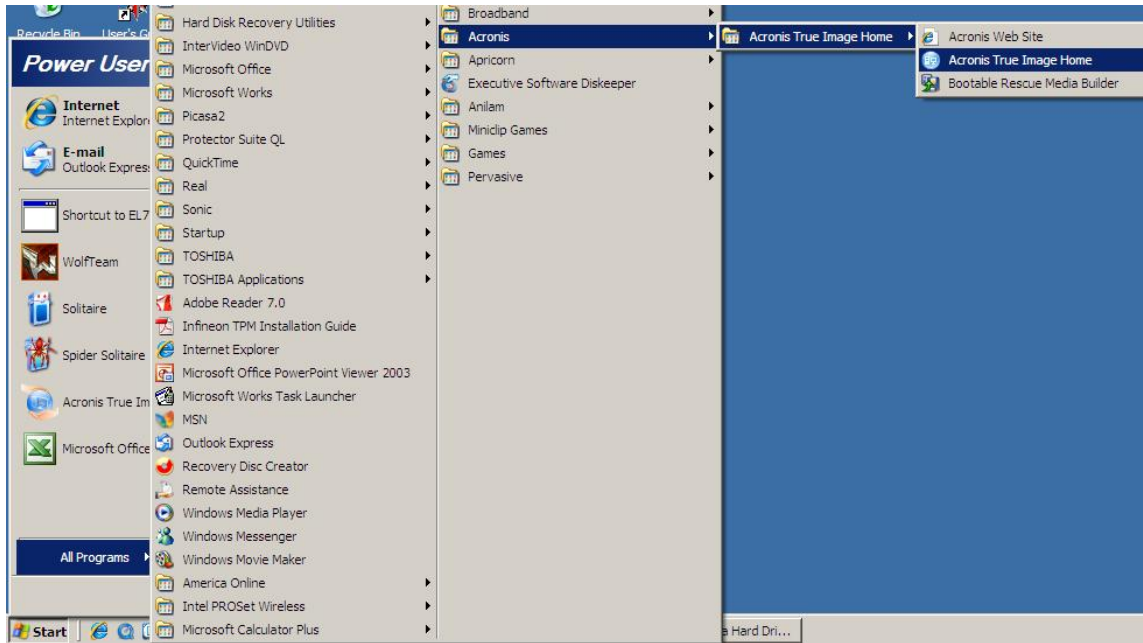
This step can be done at a later step, but I recommend you do it first. Before starting any of the following steps, please create a folder on your computer, (maybe in “My Documents” or on the “Desktop”) with the machine model, serial number and date of backup, so you know what it is. For example, I called my folder: Acer_emc2240a_N8030059_11-20-2008_hd_backup

Using Acronis True Image 11 Home Software

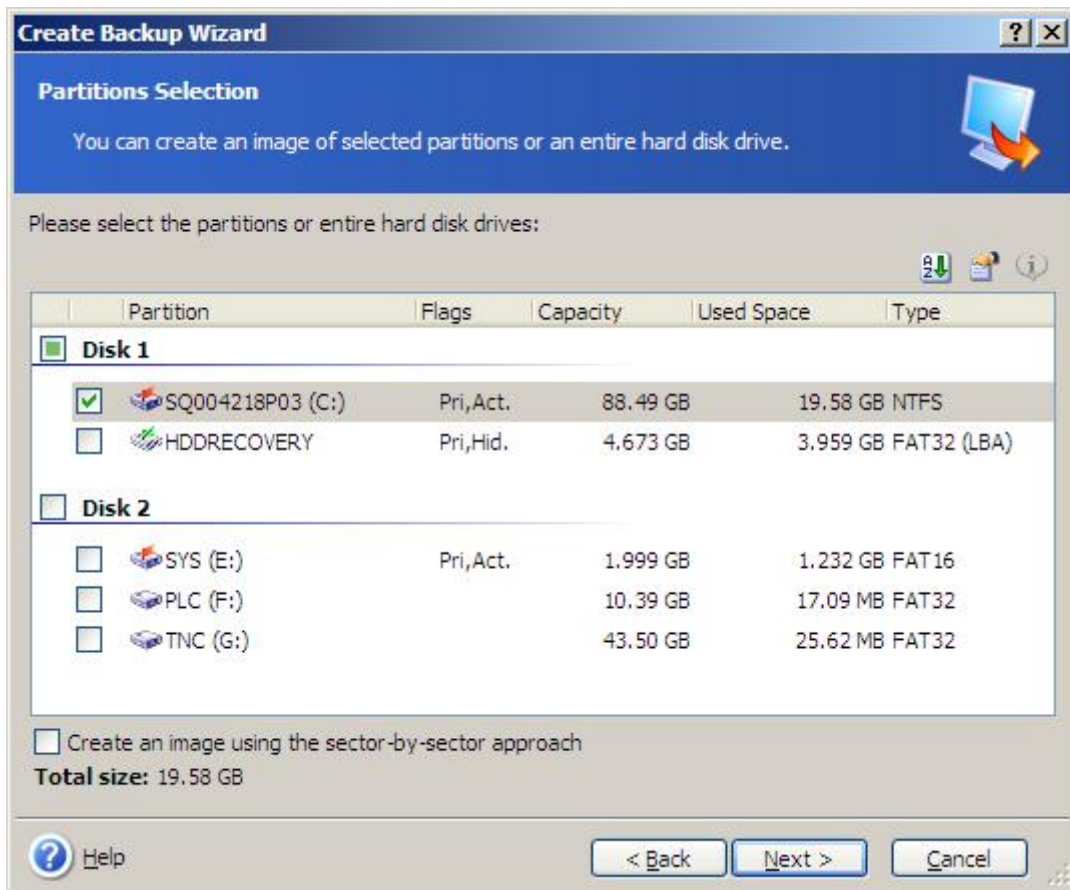


1. Double click the Acronis True Image Home 11.0 icon on your Desktop.

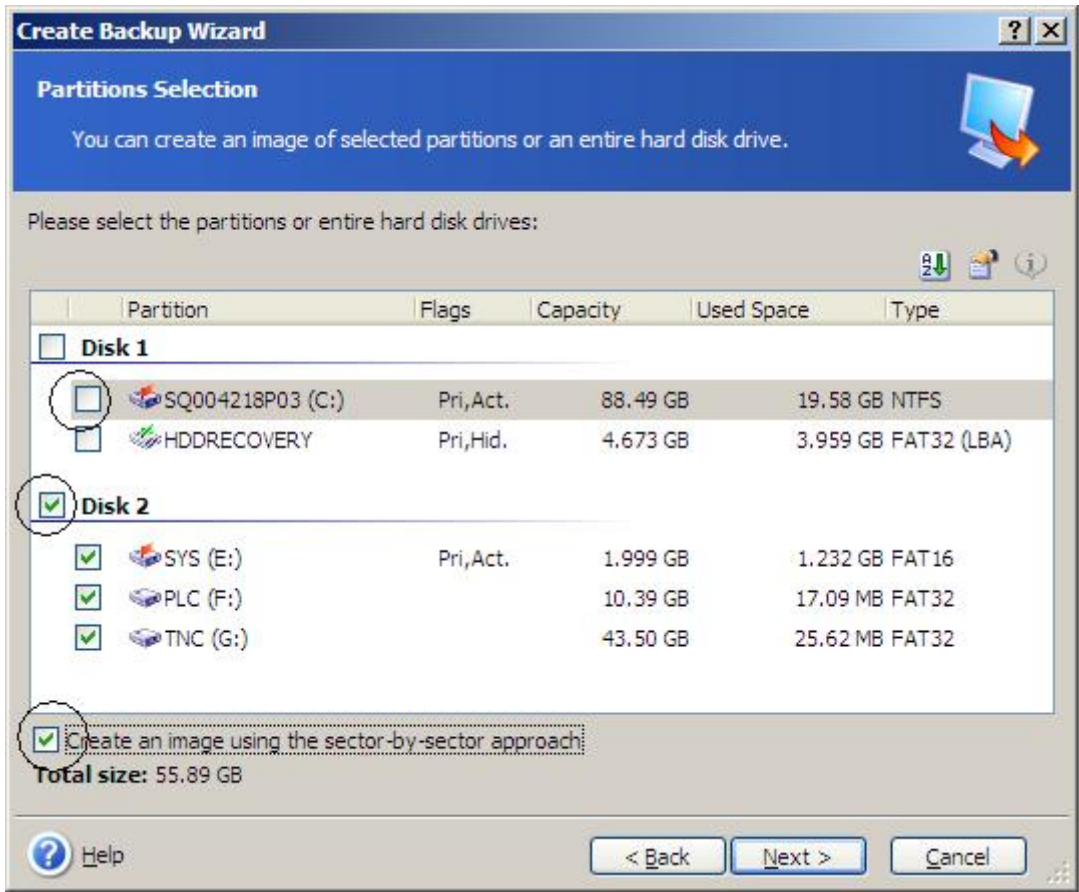
OR click Start, All Programs, Acronis, Acronis True Image Home, Acronis True Image Home to open the program.



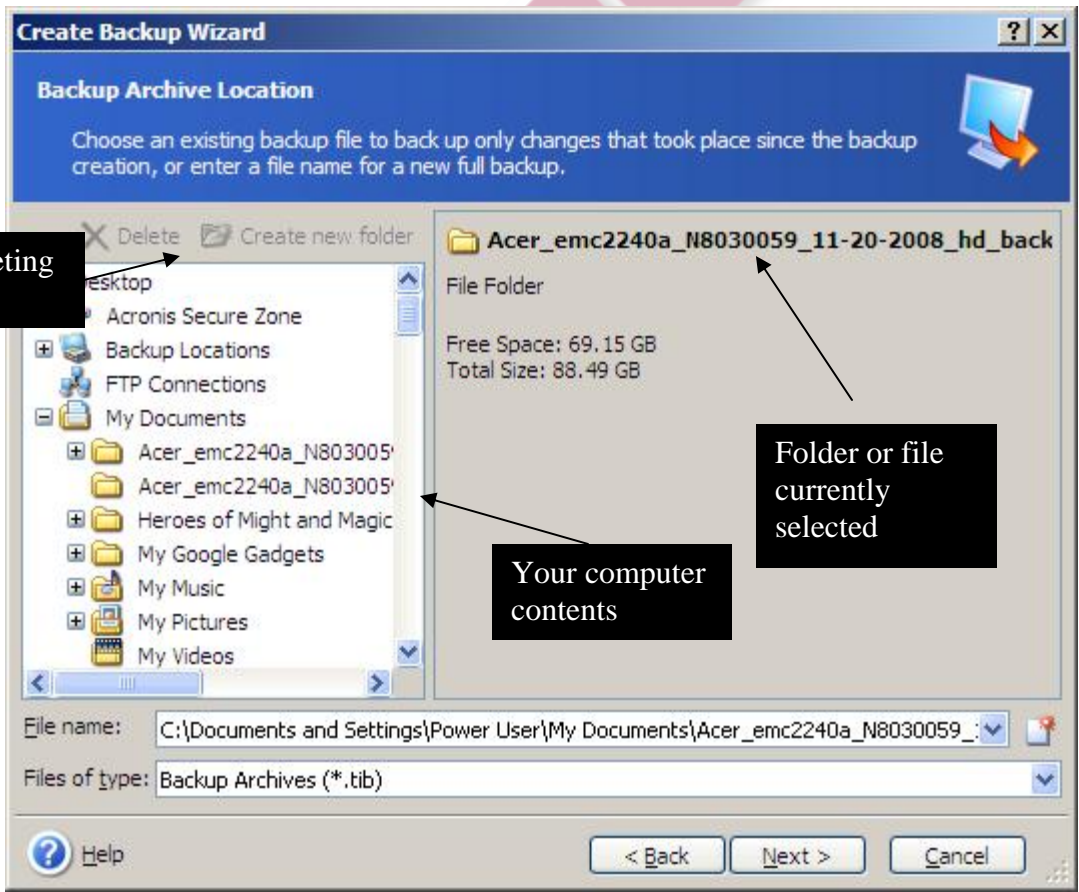
2. After opening the Acronis True Image Home software, please click “Backup and Restore”.
3. Click “Backup”, then click “Next”
4. Check “My Computer”, click “Next”
5. Check “Disks and partitions”, click “Next”
6. This is the screen you should be at now:



7. Uncheck the “check mark” next to the (C:). **Note: Your (C:) will have different numbers and letters than what I have. Each hard drive is different.** Then check the “check box” next Disk 2; that will automatically check all drives (E:, F:, and G:), (what we want to do.) Be sure to check the “Create an image using the sector-by-sector approach.”



8. This is the next window you should see:




creating or Deleting folders

Your computer contents

Folder or file currently selected

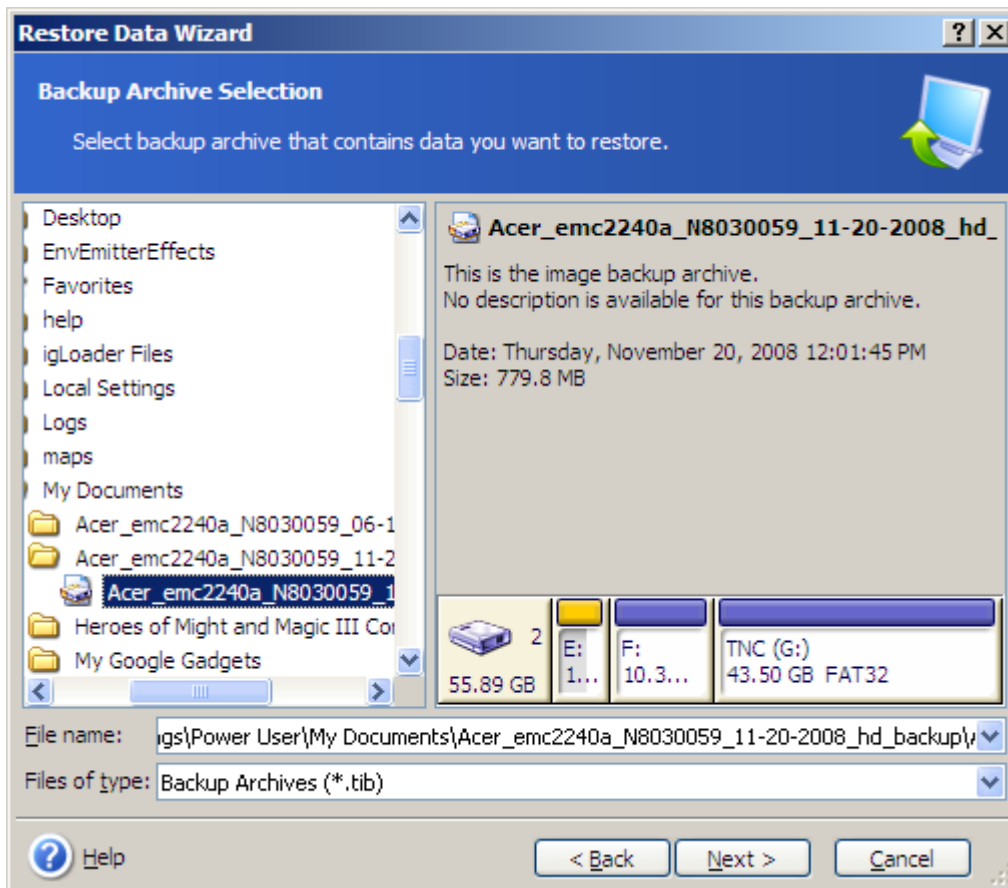
At this step, you can actually create a folder if you have not created one before.

9. Click  the “Generate name for new file” button and name your backup file. The default name is “My Backup”, but you can change that name if you wish, (I recommend it). I chose it to be the same as the folder name, “Acer_emc2240a_N8030059_11-20-2008_hd_backup”. Keep the Files of type as default: Backup Archives (*.tib). Then click “Next”.
10. Check “Create a new full backup archive”, then click “Next”.
11. Check “Use default options”, then click “Next”.
12. The next screen allows you to add comments. This is optional. If you created your file name to be as specific as I created it, then this may not be necessary. Click “Next” when ready to move on.
13. If you want, look over the information in this next screen. It just describes what you will backup. Click “Proceed” when ready to move on begin backup of hard drive. When complete, click “OK”.

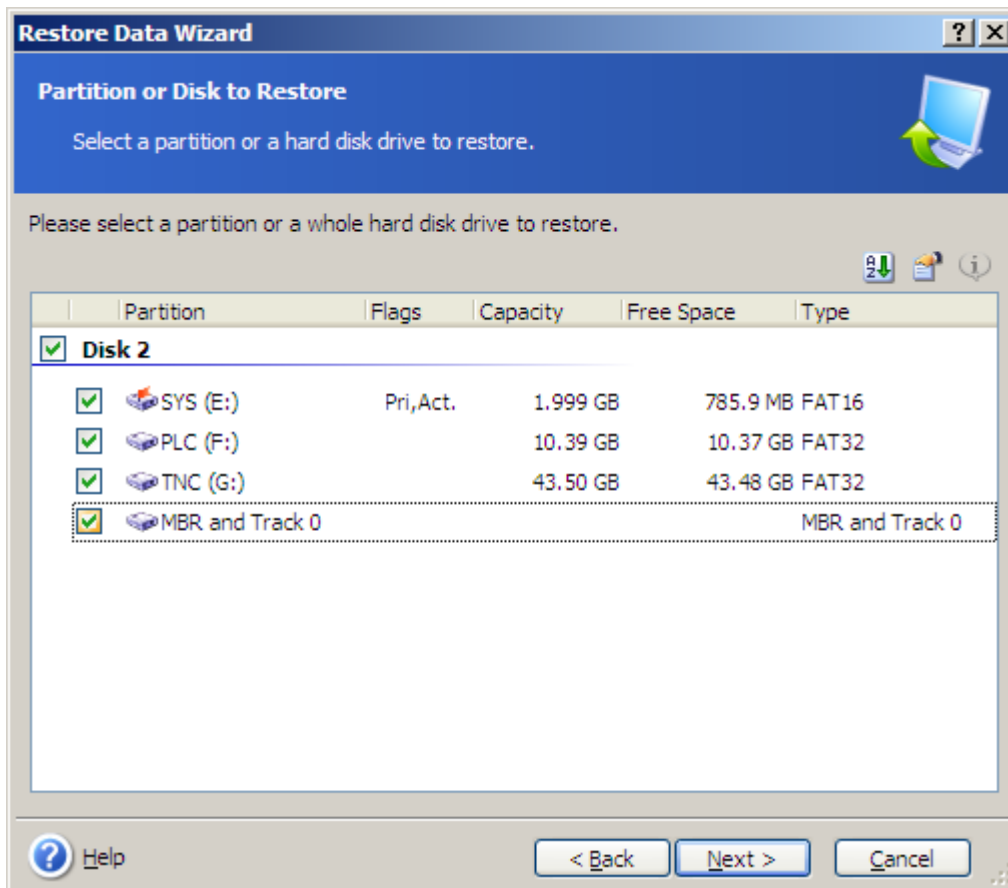
You have successfully cloned the CNC Control’s hard drive to the computer.

Restoring the clone to the CNC Control’s hard drive

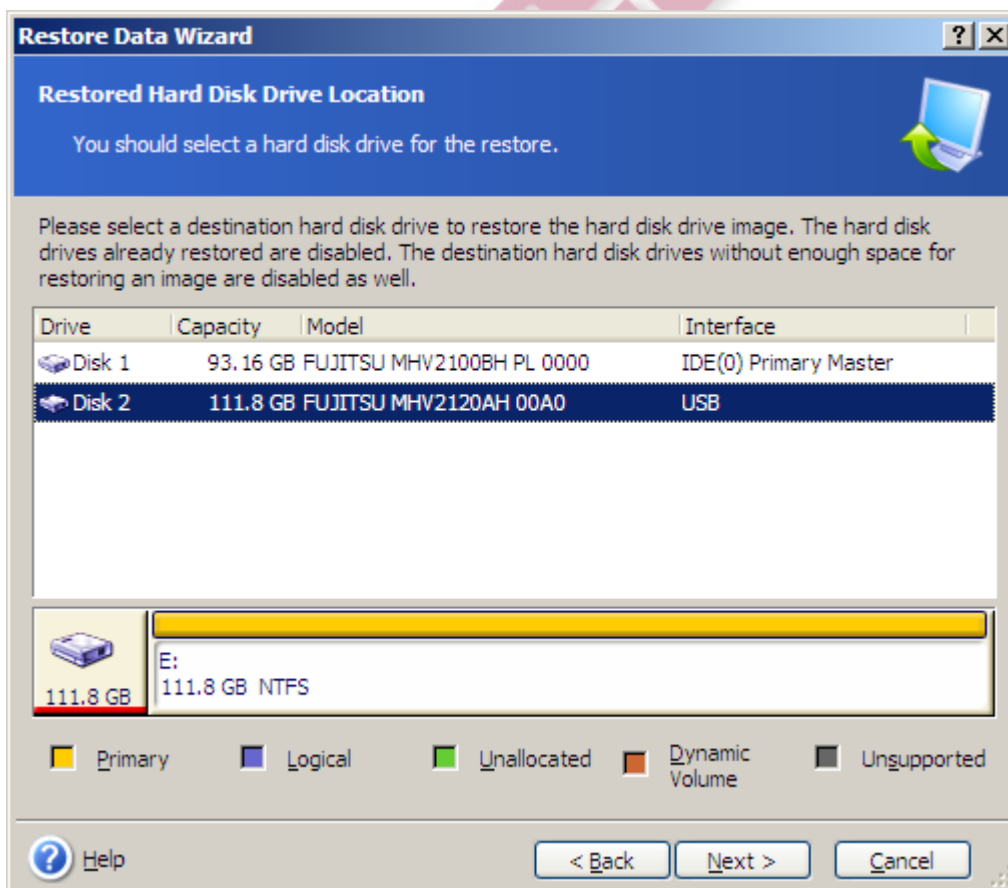
1. Unplug power cable on Universal Hard Drive Adapter, unplug USB cord from computer to the Universal Hard Drive Adapter and remove the hard drive. Be careful not to bend the pins on the hard drive.
2. Carefully attach new hard drive to the Universal Hard Drive Adapter to the IDE cable (same way as the previous hard drive), and then plug in power cable and last the USB cord to computer (in that order). Place the hard drive upside down or have the four screws attached to the hard drive. *Do not let the bottom of the hard drive touch the table.*
3. If a window pops up, you can cancel it. Just to check, make sure the hard drive is recognized in My Computer. Double-click “My Computer” and see if the hard drive is recognized.
4. After opening the Acronis True Image Home software, please click “Backup and Restore”.
5. Click “Restore” and then click “Next”.
6. Locate backup file. For reference, refer to Step 8. in the **Using Acronis True Image 11 Home Software** directions.



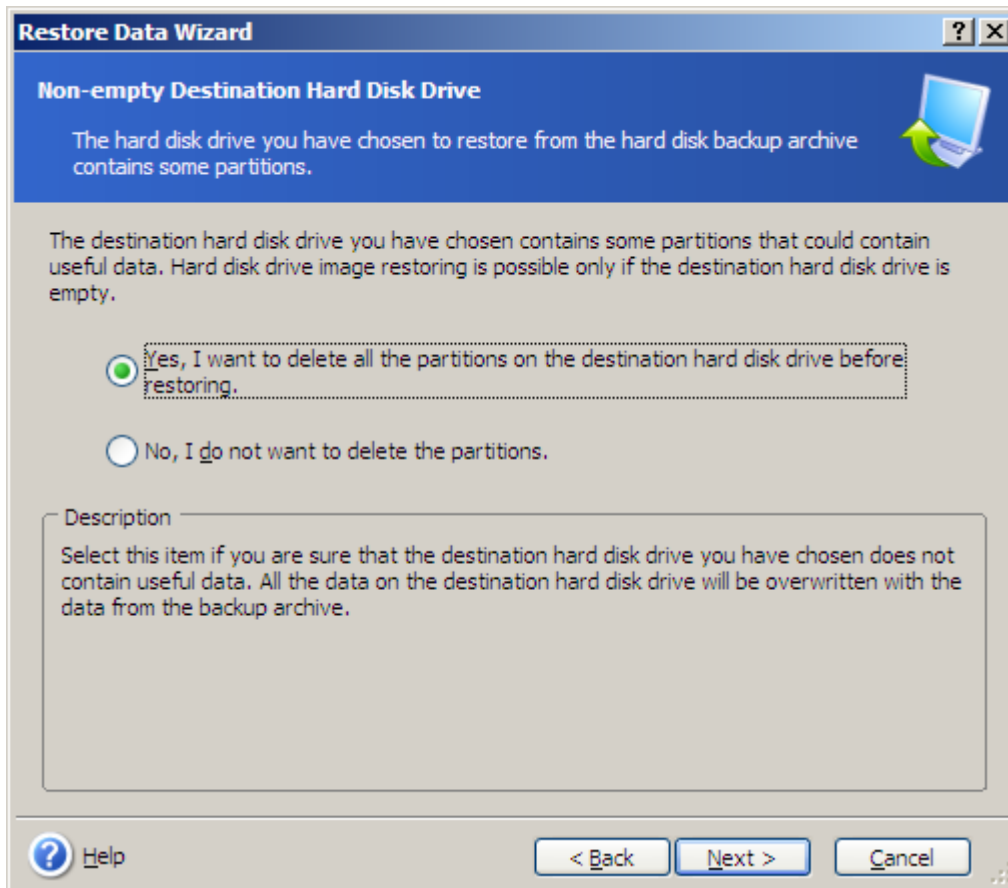
7. Click “Next”. Then select “Restore disks or partitions”, and click “Next”.
8. Check the checkbox beside Disk 2. It should have three partitions, SYS, PLC, an TNC with a MBR and Track 0. All of the below partitions should automatically be checked. Click “Next”.



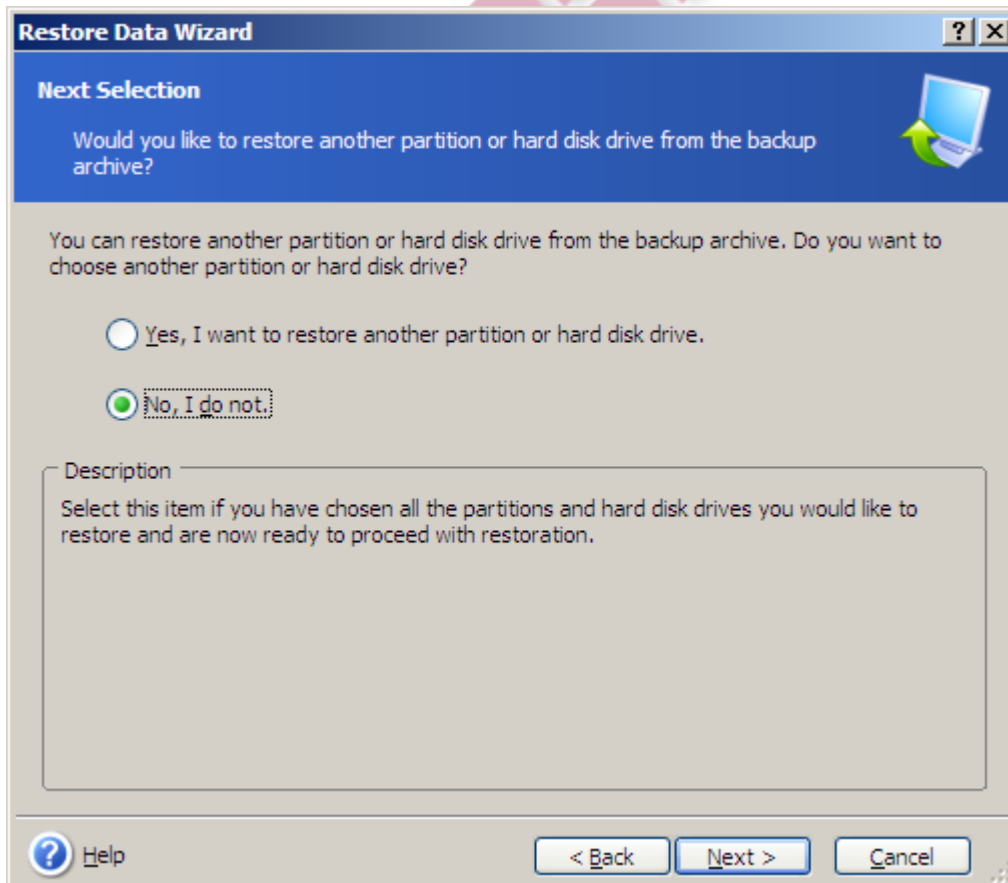
9. Select Disk 2, or the hard drive you want to clone. It is the one that says USB under Interface, then click “Next”.



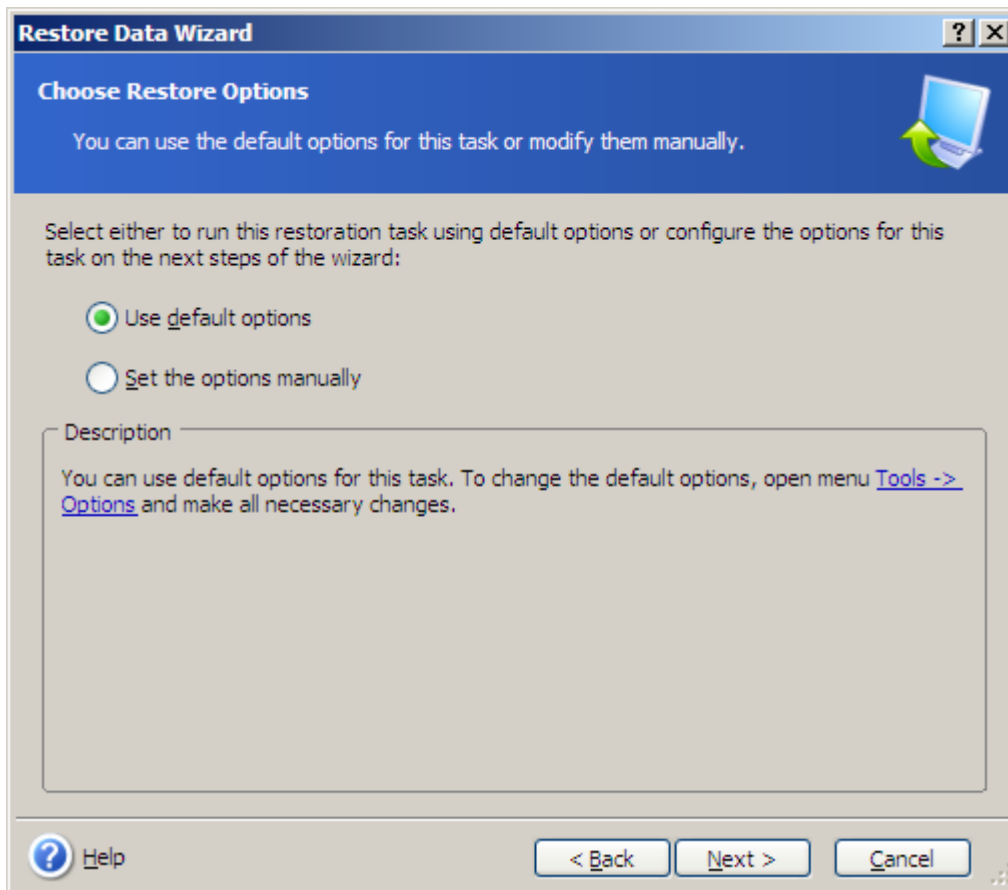
10. Click “Yes, I want to delete all partitions...”, then click “Next”.



11. Select “No, I do not”, then click “Next”.

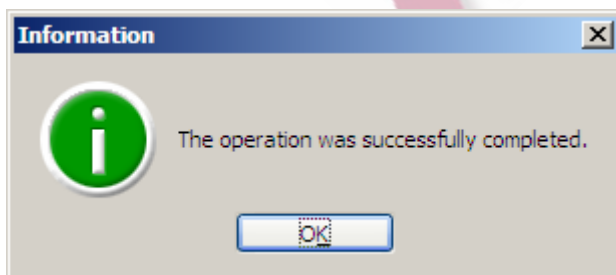


12. Select “Use default options”, then click “Next”.

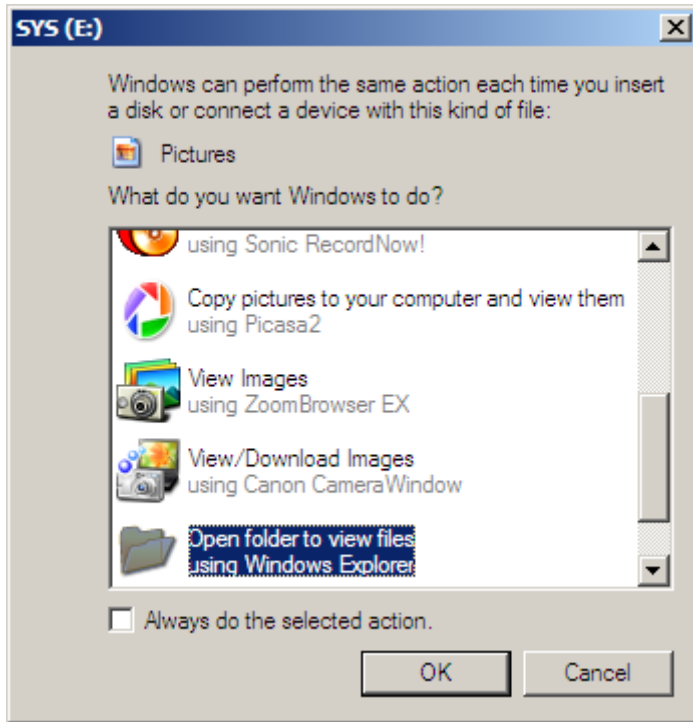


13. Click “Proceed”. Wait for the hard drive to finish formatting, it may take a while, depending on the size of the hard drive, probably around 30 minutes to an hour.

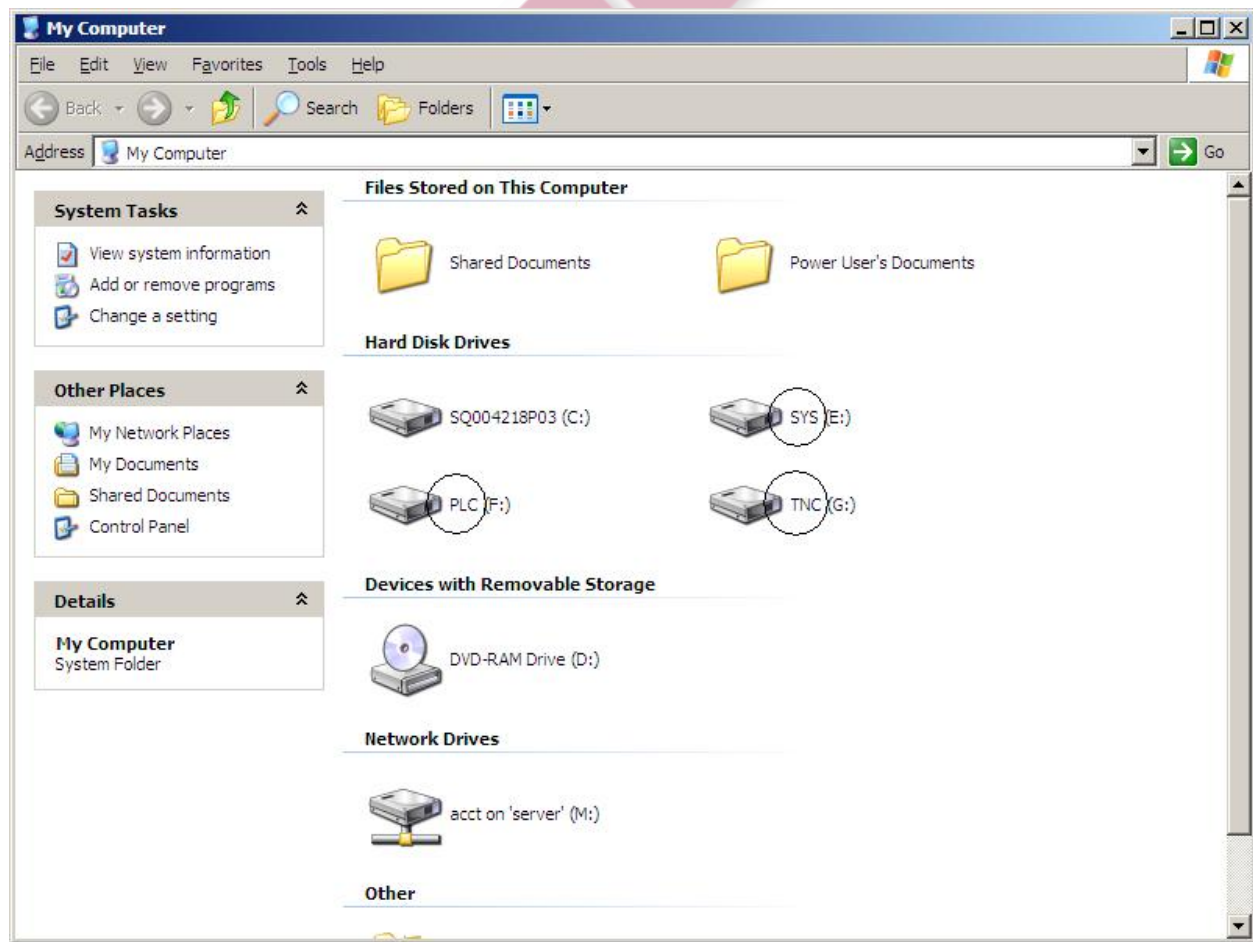
14. Click “OK”.



15. **Optional:** *If this windows pops up, click “Open folder to view files...” The hard drive should open with some folders and files. If you do not want to open it, click cancel. This step is one way to confirm that the hard drive works.*

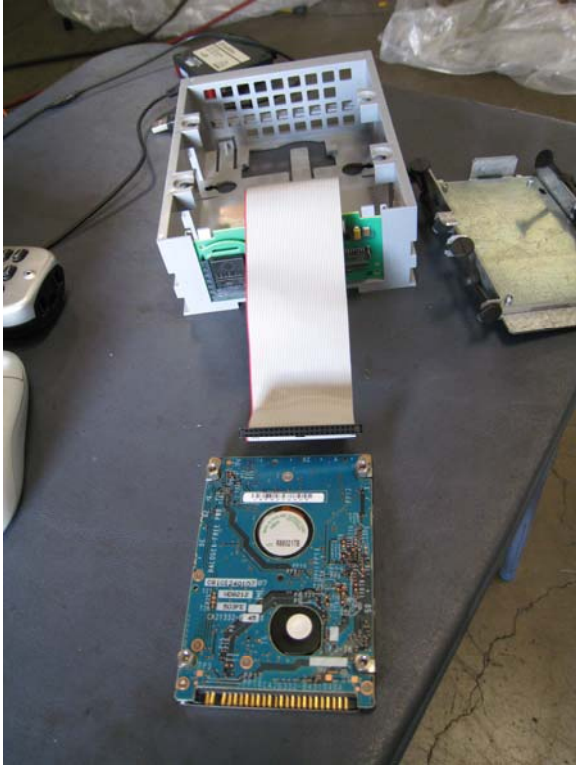


16. Go back to “My Computer” and see if there are three drives that say SYS, PLC and TNC, drive present. If it looks like this, the it is good:

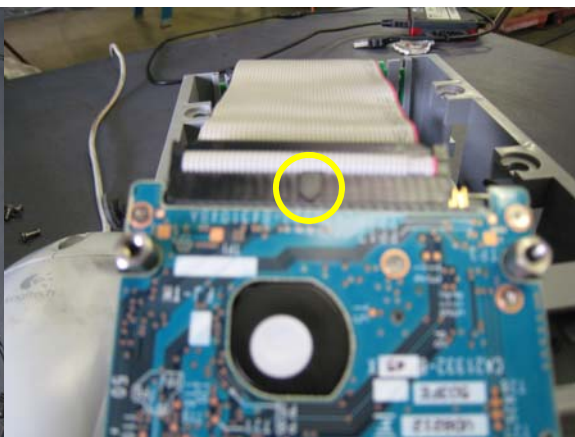
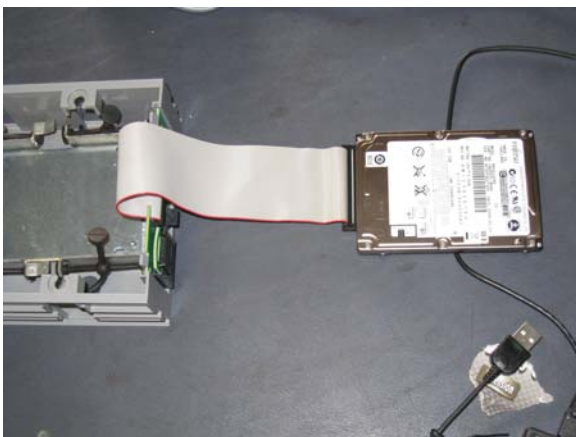


Putting back the hard drive into the plastic holder

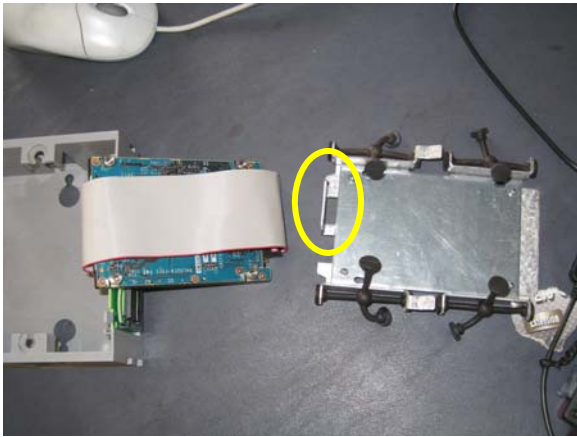
1. Screw on the four screws on the hard drive if they are not already attached. This way, the hard drive can rest on the screws and not the bottom of the hard drive.



2. Plug back the hard drive and IDE cable as before. **Be careful, the IDE cable can go in both ways.** Refer to the pictures for reference as to how to put back the hard drive into the metal case. Notice which side the red lined cable on the IDE cable is corresponding to the hard drive. The second picture showed a circled plastic piece that should be on the bottom of the hard drive.



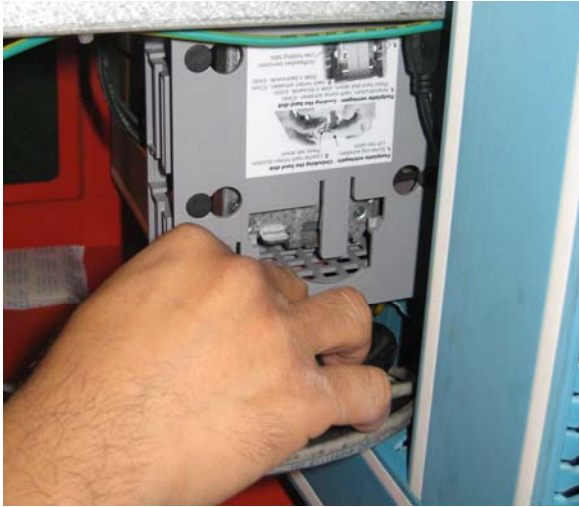
3. Flip the hard drive over. Notice the placement of the metal case that is the direction it needs to be in when inserting it into the plastic holder. Do not flip the position of the metal case when inserting the hard drive.



4. Place the metal case into the plastic holder as shown. The circled metal piece should be on the side of the plastic holder handle.



5. Flip the hard drive over again onto the metal case, (so you have an idea how it should look like after you screw in the four screws). Screw in the four screws on to the metal cover (not the four optional screws to take off, the first set of screws that was unscrewed).
6. Attach the eight rubber attachments. It may be easier to attach the bottom attachments first. The IDE cable should wrap around on top of the hard drive.
7. Insert the hard drive back into the chassis of the machine, in the same direction as you took it out. Push the plastic case up until you hear a click.



You are now ready to use the Anilam Control.

WHEELER