



Springwood Industrial, Inc.  
1062 N. Kraemer Place  
Anaheim, CA 92806  
Tel: 714-632-9701 Fax: 714-632-9730  
<http://www.aceronline.net>

[info@acergroup.com](mailto:info@acergroup.com)

Klim Industrial, Inc.  
244 N. Randolphville Road  
Piscataway, NJ 08854  
Tel: 732-752-9100 Fax: 732-752-9101  
<http://www.aceronline.net>

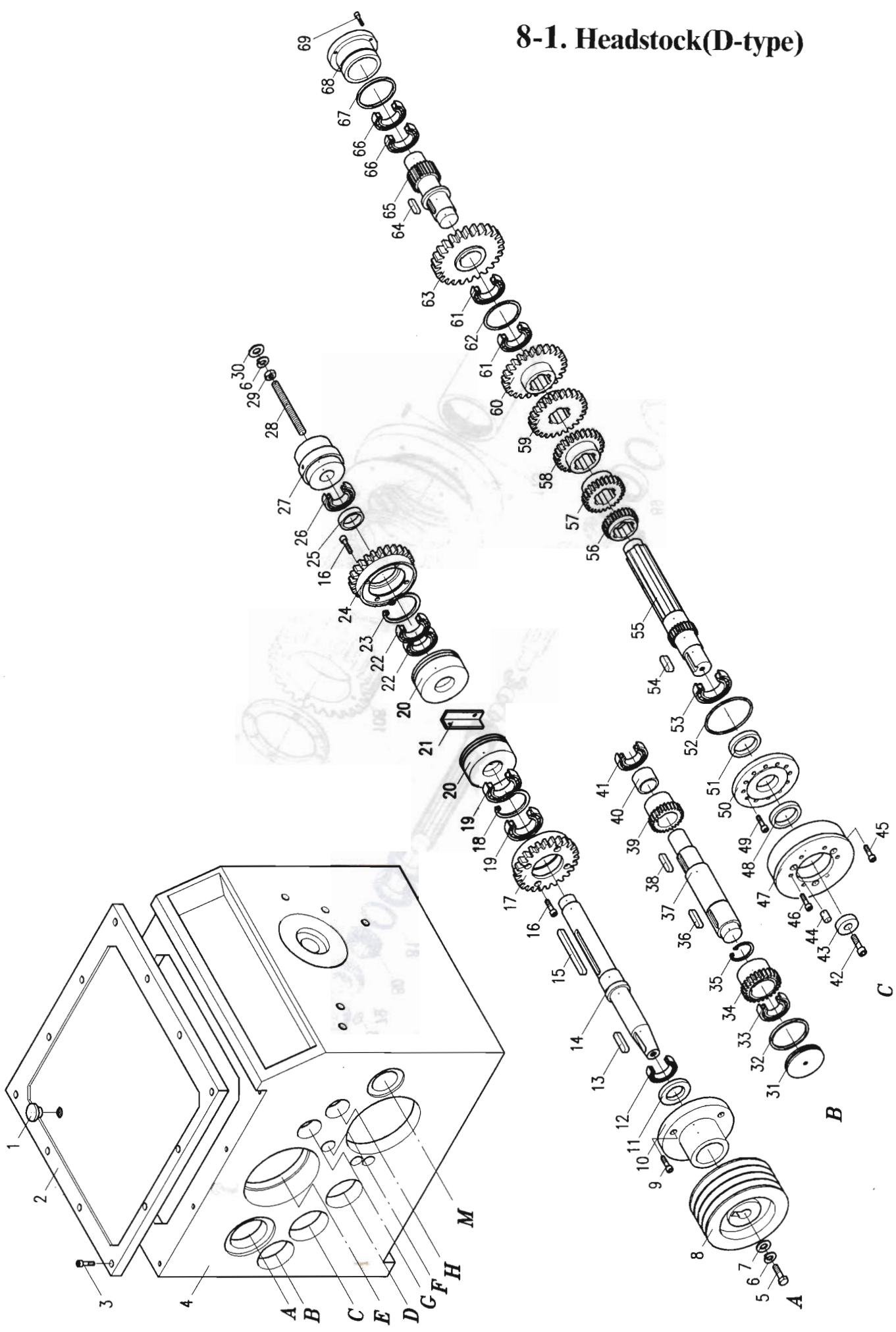
[acer\\_klim@yahoo.com](mailto:acer_klim@yahoo.com)

## PROCEDURE TO REPLACE THE HIGH LOW GEAR (ITEM 87 & 65) ON DYNAMIC 29" LATHE

1. Loose and take out all the set screws on item 112, 95, 100, 103, 107, & 97. Then you can lose the spindle lock nut, item 103.
2. Using a dead end hammer, hit the end of the spindle with a piece of wood.
3. Push spindle out a little bit over 60mm (do not push too far).
4. Take out the cover, item 68 & 91
5. You can take out the item 86 & 55 (10mm tap hole thread inside shaft) with pull out tool.
6. When you replace item 87 & 65 (high low gear) then put back the spindle on reversing procedure.

**Be careful on the alignment spacer and bearing when you put back the spindle.**

# 8-1. Headstock(D-type)



# 8-1. Headstock(D-type)

