



Springwood Industrial, Inc.  
2320 E Valencia Dr  
Fullerton , CA 92831  
Tel: 714-871-5558 Fax: 714-871-5554  
<http://www.aceronline.net>

[info@aceronline.net](mailto:info@aceronline.net)

Klim Industrial, Inc.  
244 N. Randolphville Road  
Piscataway, NJ 08854  
Tel: 732-752-9100 Fax: 732-752-9101  
<http://www.aceronline.net>

[acer\\_klim@yahoo.com](mailto:acer_klim@yahoo.com)

## PROCEDURE TO REPLACE STEADY REST BEARINGS

### PROCEDURE FOR REMOVING BRASS TIP BEARING

1. Remove steady rest shaft from the steady rest.



2. Look for a round bar (that is a smaller diameter than the hole) and insert it into the hole. Strike the bar and push out the brass tip bearing against the ring.

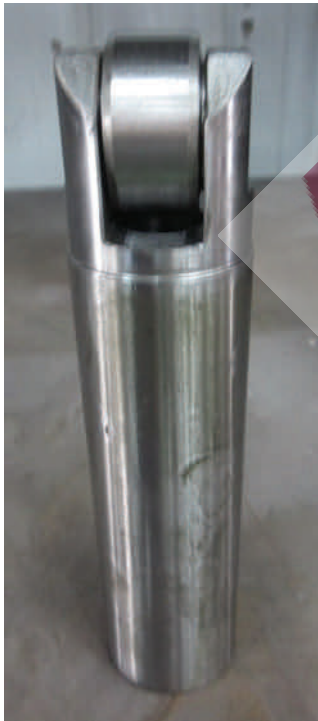


3. Install the brass tip bearing, place the bearing on the arrow.



## **PROCEDURE FOR REMOVING THE ROLLER BEARING**

1. Remove the steady rest shaft from the steady rest.



2. Tap the smaller pin out (from the side with the arrow), replace the bearing.



3. Install the bearing, reverse steps to replace.