

ACER Group

Springwood Industrial, Inc.  
1062 N. Kraemer Place  
Anaheim, CA 92806  
Tel: 714-632-9701 Fax: 714-632-9730  
<http://www.aceronline.net>

[info@aceronline.net](mailto:info@aceronline.net)

Klim Industrial, Inc.  
244 N. Randolphville Road  
Piscataway, NJ 08854  
Tel: 732-752-9100 Fax: 732-752-9101  
<http://www.aceronline.net>

[acer\\_klim@yahoo.com](mailto:acer_klim@yahoo.com)

## PROCEDURE TO SETUP SUPRA 818PD SURFACE GRINDER

1. Unwrap the machine and check out machine for any physical damage. If so, report to your dealer as soon as possible. Touch-up paint is inside the toolbox. Use it as needed.

2. Move machine to appropriate location. Put 5 leveling screw, nut and pad on machine (follow picture).

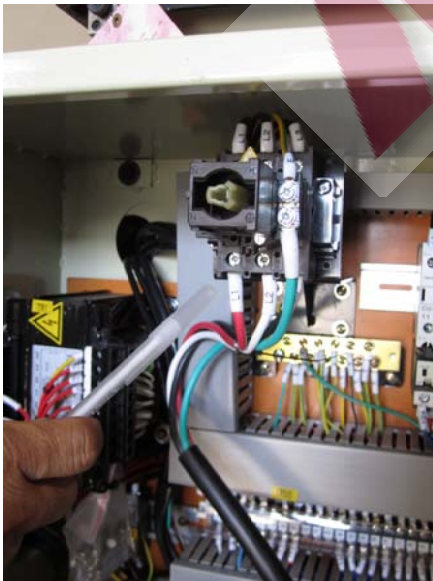


Remove the three hooks and one lock nut.





3. Check input power that will be used for the machine. Power required for our machines are: 230V three phase (3 $\Phi$ ) or 460V three phase (3 $\Phi$ ). Power must be first specified upon ordering. Please connect the power to L1, L2, L3, Ground terminal as follows with minimum current of 15 amps (230V). Loosen 2 screws and open electricity cabinet.



4. Hook up electronic conduct connectors and wire, from hydraulic system, one from dust suction and one from the dust suction and coolant system.



5. Connect two corresponding hydraulic hoses: A-A, B-B as labeled.



6. Fill up hydraulic oil (minimum 20 gallons) and lubricating oil . Make sure filling gauge is at F.



7. Turn on control. Make sure all the motors are running clockwise (spindle motor, hydraulic motor, cross-feed motor, vertical rapid motor, and coolant pump motor). 1) Release (pull) emergency button. (See Fig. 1) 2) Press spindle (See Fig. 2 & 3), hydraulic (See Fig. 4 & 5) and dust suction and coolant system buttons (See Fig. 6 & 7). to check rotation. 3) Check cross-feed motor by toggling in and out switch while function switch is in manual mode (See Fig. 8). 4) Check rapid vertical motor by pressing up button to take out the spindle support block and in the mean time down push buttons while function switch is in manual surface or plunging mode (See Fig. 9).



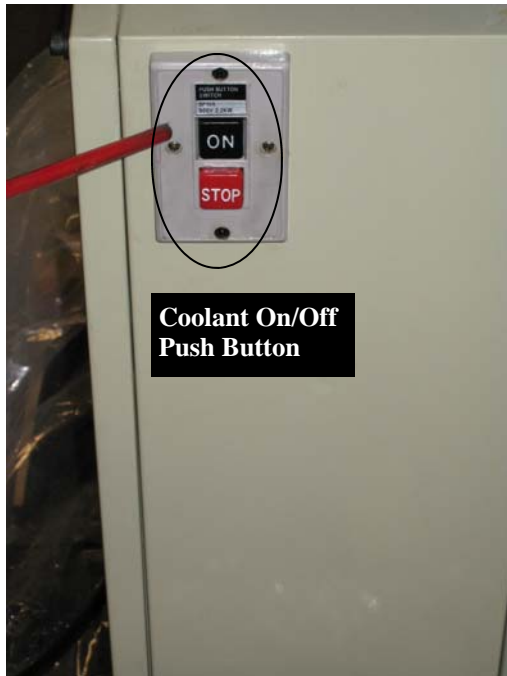


Fig. 1



Fig 2. Tap wheel with an object. Make sure the wheel is not cracked. The sound should be clear and consistent.

Fig.3 Push On and Off immediately. Make sure spindle rotation is clockwise.



Fig. 4



Fig. 5 Make sure hydraulic motor rotation is clockwise.



Fig. 6 Make sure the dust collector motor is running.



Fig. 7 Make sure the coolant pump is running clockwise.



Fig. 8 Make sure table crossfeed moving direction is correct.



Fig. 9 Make sure Rapid Up/Down direction is correct.



If opposite direction, please turn off main power by pushing emergency button. Switch any two power lines that go into the machine.

## 8. Leveling the machine

Precisely level the machine on a solid foundation. Precise leveling of the grinder is important to the finish of the product and the tolerance of the machine.

### C. Levelling:

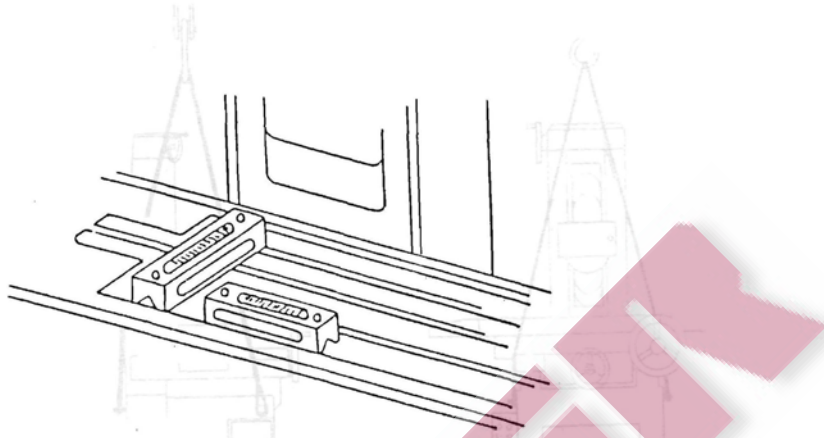


Fig. 4

Clean the table surface thoroughly and use 2 spirit levels, one on longitudinal direction while the other one on cross direction. Adjusting the 3 levelling screws at the base till the readings is 0.02mm/1000mm (0.001"/4FT) on both longitudinal and cross directions. Then lock the nuts on the screws and check the readings again till 0.02mm/1000mm.

When levelling the machine, a solid floor or anti-vibration pads are highly recommended to prevent any rocking during grinding.

9. For auto lube pump, we recommend you use way oil #2 or for hydraulic oil, use Mobil DTE 25 or follow the manual suggestion.

10. Read through the operation manual and choose the correct wheel for application.

11. Ready to run your grinder: please read through the Supra-818PD manual to familiarize yourself with all functions, features and controls. Should you have any questions or comments, please contact your local dealer first. They will then refer you to Acer 714-632-9701 (West Coast) or 732-752-9100 (East Coast) for further assistance.