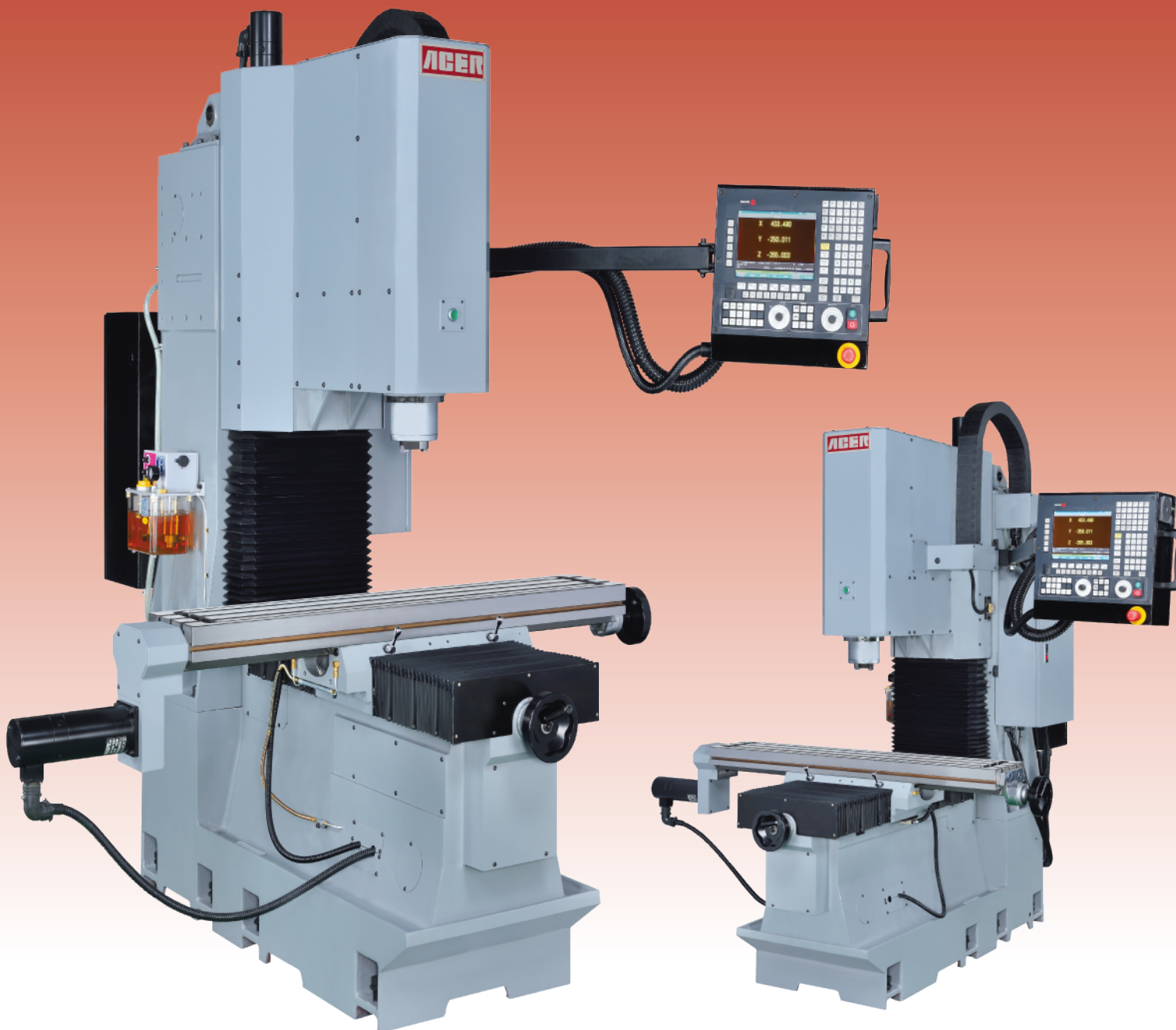




Technology • Creativity • Reliability
An Unswerving Commitment to Excellence

ACER Precision Tool-Room Milling Machine



ATM 1054+

SPECIFICATIONS

MODEL		ATM 1054+
Table	Table Size	10" × 54" (254 × 1372 mm)
	T-Slots	3 × 5/8" (16 mm)
	Table Load	1320 lbs (600 kgs)
Travel	X Axis Max. / Rapid Feed	31.5" (800 mm) / 200 ipm
	Y Axis Max. / Rapid Feed	20" (500 mm) / 200 ipm
	Z Axis Max. / Rapid Feed	20.87" (530 mm) / 200 ipm
	Max. Spindle Nose to Table	5.31" (135 mm) ~ 25.39" (645 mm)
	Spindle Center to Column Face	23.62" (600 mm)
Spindle	Spindle Diameter	4.72" (120 mm)
	Spindle Taper	CAT/BT #40; NMTB#40 Opt.
	Spindle Speed RPM	0 ~ 6000
Motor	Spindle HP	7.5
	X Axis Servo Motor	AC 750watts or DC 31.3in-lb
	Y Axis Servo Motor	AC 750watts or DC 31.3in-lb
	Z Axis Servo Motor	AC 1 KW or DC 31.3in-lb
	Coolant Pump HP (Opt.)	1/8
	Lubrication Pump Watts	80
Power	Control	110V / 1P / 30A or 230 / 3P / 50A
	Machine	12.5 KVA
Air Req.	Air Pressure	6 kg/cm ² min.
Dimension	Max. Working Height	97.64" (2480 mm)
	Height from Table Top to Bottom of Bed	35.43" (900 mm)
	Width of Machine Including Table	76.44" (1945 mm)
	Overall Length with Electrical Door Closed	80.71" (2050 mm)
	Overall Length with Electrical Door Open	103.15" (2620 mm)
	Overall Width with Full Table Traverse	108.27" (2750 mm)
	Footprint of Machine inches	76.44" × 80.71" × 94.49"
	Footprint of Machine metric	1820 × 2050 × 2400 mm
Weight	Net Approx.	5001 lbs (2273 kgs)
	Gross Approx.	5254 lbs (2388 kgs)
Packing Dimension Approx.	X × Y × Z inch (metric) w / balancing block	86.22" × 86.22" × 85.83" 219 × 219 × 218 cm
Maximum Working Capacity in Mild Steel		
Drilling Max. Capacity		1 1/4" (32 mm) Dia.
Milling Max. Capacity		5 inch ³ /min
Boring Capacity		8" (200 mm) Dia.
Tapping Max. Capacity		1" (25 mm)
Handwheel Type (Opt.)		Electronic MPG

Note: The manufacturer reserves the right to modify the design, specification, mechanisms, etc., to improve the performance of the machine without prior notice. All specifications shown above are for reference only!

OPTIONAL ACCESSORIES

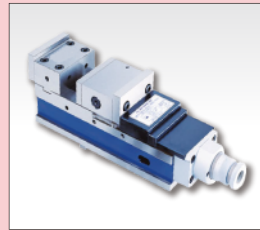
- Manual Pulse Generator
- Digital Readout Scales
- Mist Spray Coolant System
- Coolant System
- LED Light



• 4th Axis CNC Rotary Table



• 52 Pcs Clamping Kit



• CNC Power Vise



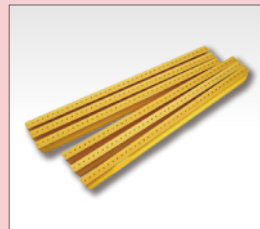
• Hydraulic Machine Vise



• Right Angle Milling Head



• Rotary Table



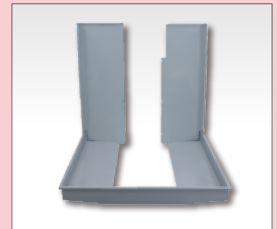
• T Slot Cover



• Table Guard



• CAT #40 Tool Holder Set



• Chip Guard & Column Side Guard

www.acerlinks.com / www.aceronline.net (U.S. Only)

SPRINGWOOD INDUSTRIAL, INC.

2320 E. Valencia Drive
Fullerton, CA 92831
Tel: (714) 871-5558
Fax: (714) 871-5554
E-mail: info@aceronline.net

YA-GIN MACHINE TOOL MANUFACTURING, INC.

No. 101, 506 Lane, Seng-Tso Rd.
Seng Karng District, Taichung City, Taiwan
Tel: 886-4-2520-4120
Fax: 886-4-2520-4123
E-mail: sales@acerlinks.com