

Backup PLC, parameters, etc using a USB stick:

(Prior to backup, create a new directory in your USB stick. *Ex. My CNC Backup.*)

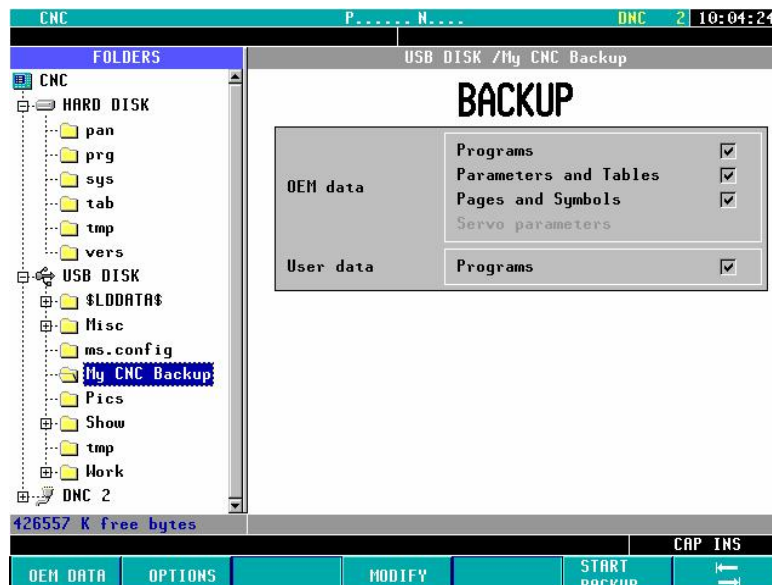
1. Must be on the G-code side of the controller. (Shift-Esc)
2. Press + (F7).
3. STATUS (F1).
4. CNC (F1).
5. BACKUP (F1).
6. Scroll down to USB DISK.
7. Press the right arrow key to open USB DISK.
8. Scroll to backup folder. (*Ex. My CNC Backup*)
9. Confirm that all parts of the backup are checked off.
10. Press START BACKUP (F6).

This feature is available on the following version software:

Ver.13 + for mills  
Ver.14 + for lathes



- To toggle from side to side.
- Right/left arrow to check/uncheck boxes.
- Use ENTER to save box.



\* Programs that are hidden will be encoded when opened in notepad \*