

.EC MACHINERY DIRECTIVE 89/392/EEC

PARTS LIST

PRESERVE THIS MANUAL FOR
FUTURE REFERENCE AND USE

MACHINE NAME: HORIZONTAL SURFACE GRINDING
MACHINE

BRAND: ACER

MODEL: SUPRA 1 0 2 0 P D & 1 2 2 4 P D

MANUFACTURE: YA-GIN MACHINE TOOL MANUFACTURING
INC.

Address: No 101, Lane 506, Send-Tso RD., Seng-Karng District, Taichung
City, Taiwan

Telephone: 886-4-2520-4120

FAX.: 886-4-2520-4123

INTERNET: www.aceronline.net
www.acerlinks.com

E-mail: info@acerlinks.com
info@aceronline.net

CONTENT

1 :SPINDLE.....	PL-01
2 :COLUMN.....	PL-02
3 :COLUMN & SPINDLE	PL-03
4 :WHEEL GUARD & WHEEL FLANGE (1020)	PL-04
5 :GRINDING WHEEL & COLUMN (1020)	PL-05
6 :SADDLE CROSSWISE DRIVE.....	PL-06
7 :TABLE LONGITUDINAL DRIVE(1020)	PL-07
8 :VERTICAL FEED	PL-08
9 :LIFTING STRUCTURE	PL-09
10 :LONGITUDINAL HYDRAULIC SYSTEM(1020).....	PL-10
11 :LONGITUDINAL HYDRAULIC SYSTEM(1224).....	PL-11
12 :TABLE REVERSING MECHANISM	PL-12
13 :HYDRAULIC SYSTEM.....	PL-13
14 :CHUCK & SPLASH GUARD.....	PL-14
15 :ELECTRICAL AND CONTROL BOX.....	PL-15
16 :LUBRICATION SYSTEM	PL-16

※ Following parts list are for many kinds of models. As there are several different specification of parts depends on different orders, please check carefully before placing any order. And you shall be able to contact local distributor for correct parts by this way. Thank you your attention to the above.

Approved by:

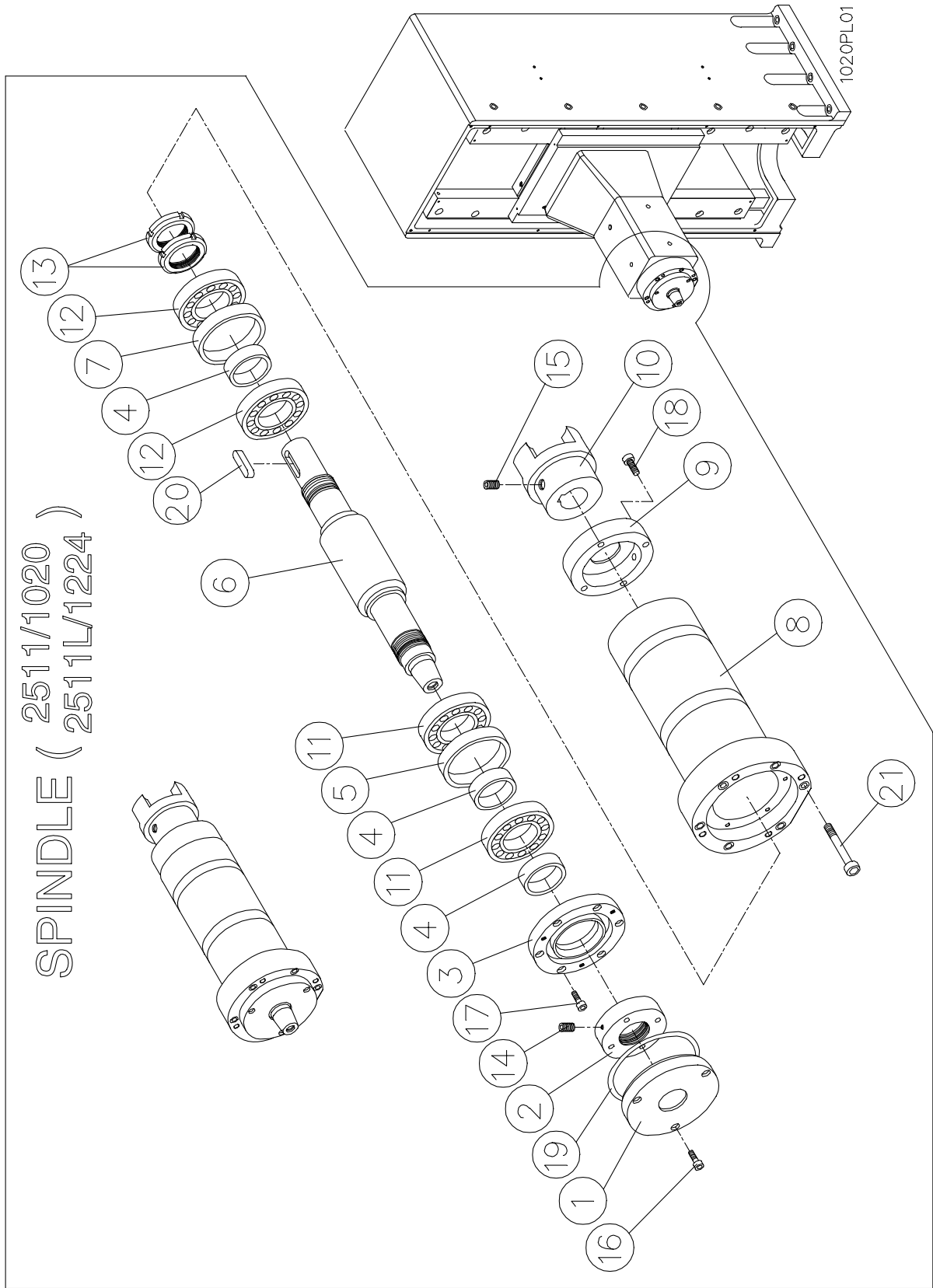
Checked by:

Prepared by:

VERSION: 1

Date:

SPINDLE



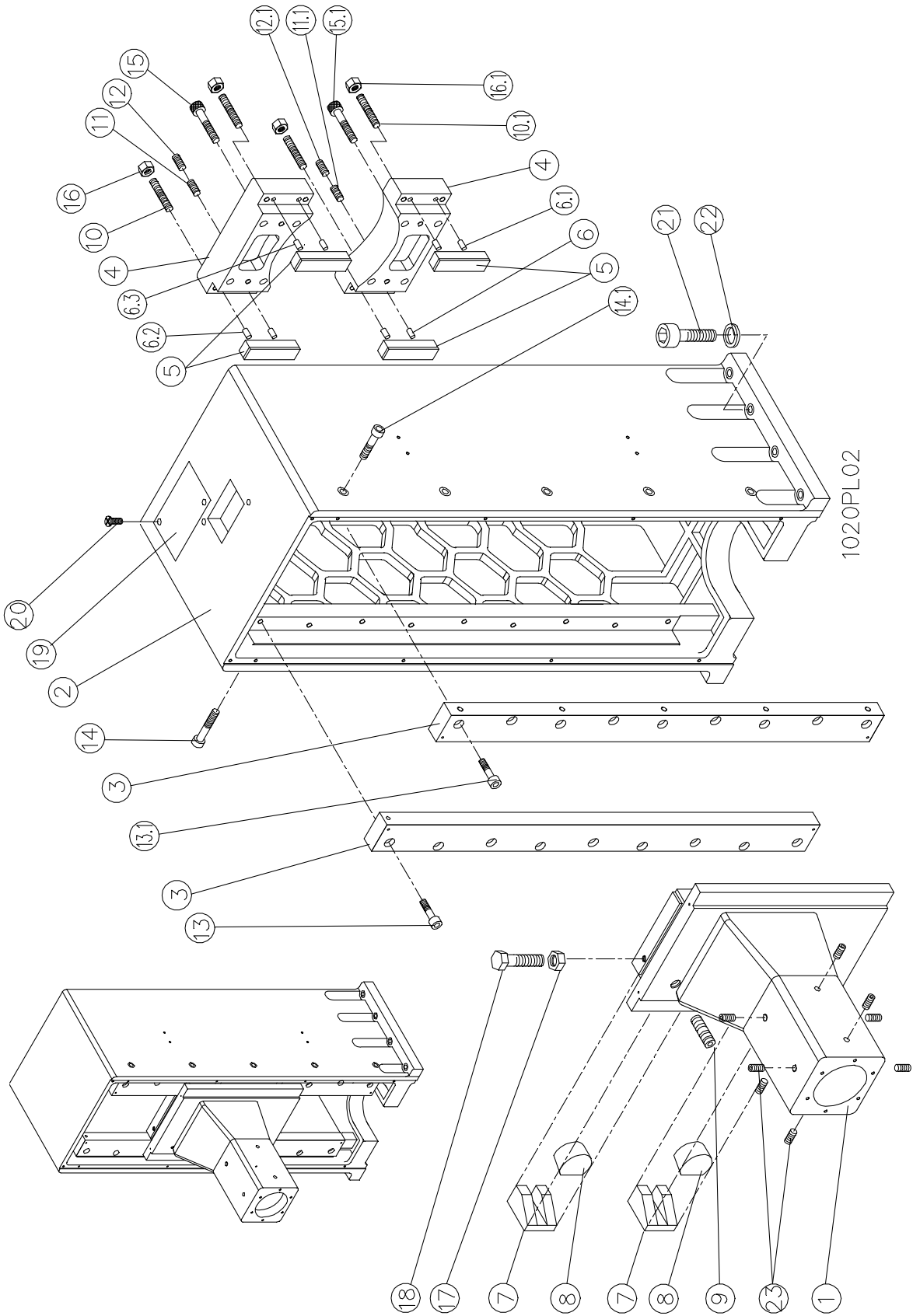
SPINDLE (2511) for 1020

NO.	PART NO.	DESCRIPTION	Q'TY	SPEC.
1.	3500024005	FRONT DUST GUARD	1	
2.	2630031005	SPINDLE FRONT NUT	1	
3.	0640003005	FRONT BEARING PRESSING PLATE	1	
4.	1440020005	INNER SPACER RING	3	
5.	1440022005	FRONT BEARING OUTER SPACER RING	1	
6.	1050003005	SPINDLE	1	FOR 8" WHEEL
7.	1440024005	REAR BEARING OUTER SPACER RING	1	
8.	1430069005	SPINDLE SLEEVE	1	
9.	3500023005	REAR DUST GUARD	1	
10.	2770002005	SPINDLE COUPLING	1	
11.		BEARING	2	7207
12.		BEARING	2	7007
13.	2630033005	SPINDLE REAR NUT	2	
14.		HEADLESS SCREW	4	M6*8L
15.		HEADLESS SCREW	2	M8*10L
16.		SOCK HEAD CAP SCREW	3	M5*20L
17.		SOCK HEAD CAP SCREW	6	M5*20L
18.		SOCK HEAD CAP SCREW	4	M6*30L
19.		O-RING	1	P95
20.		SETTING KEY	1	10*8*35L
21.		SOCK HEAD SCREW	6	M6*40L

SPINDLE (2511L) for 1224

NO.	PART NO.	DESCRIPTION	Q'TY	SPEC.
1.	3500055005	FRONT DUST GUARD	1	
2.	2630032005	SPINDLE FRONT NUT	1	
3.	0640007005	FRONT BEARING PRESSING PLATE	1	
4.	1440021005	INNER SPACER RING	3	
5.	1440023005	FRONT BEARING OUTER SPACER RING	1	
6.	1050005005	SPINDLE	1	
7.	1440025005	REAR BEARING OUTER SPACER RING	1	
8.	1430072005	SPINDLE SLEEVE	1	
9.	3500048005	REAR DUST GUARD	1	
10.	2770002005	SPINDLE COUPLING	1	
11.		BEARING	2	7208
12.		BEARING	2	7008
13.	2630034005	SPINDLE REAR NUT	2	
14.		HEADLESS SCREW	4	M6*8L
15.		HEADLESS SCREW	2	M8*10L
16.		SOCK HEAD CAP SCREW	3	M5*20L
17.		SOCK HEAD CAP SCREW	6	M5*20L
18.		SOCK HEAD CAP SCREW	4	M6*30L
19.		O-RING	1	P95
20.		SETTING KEY	1	10*8*35L
21.		SOCK HEAD CAP SCREW	6	M8*45L

COLUMN



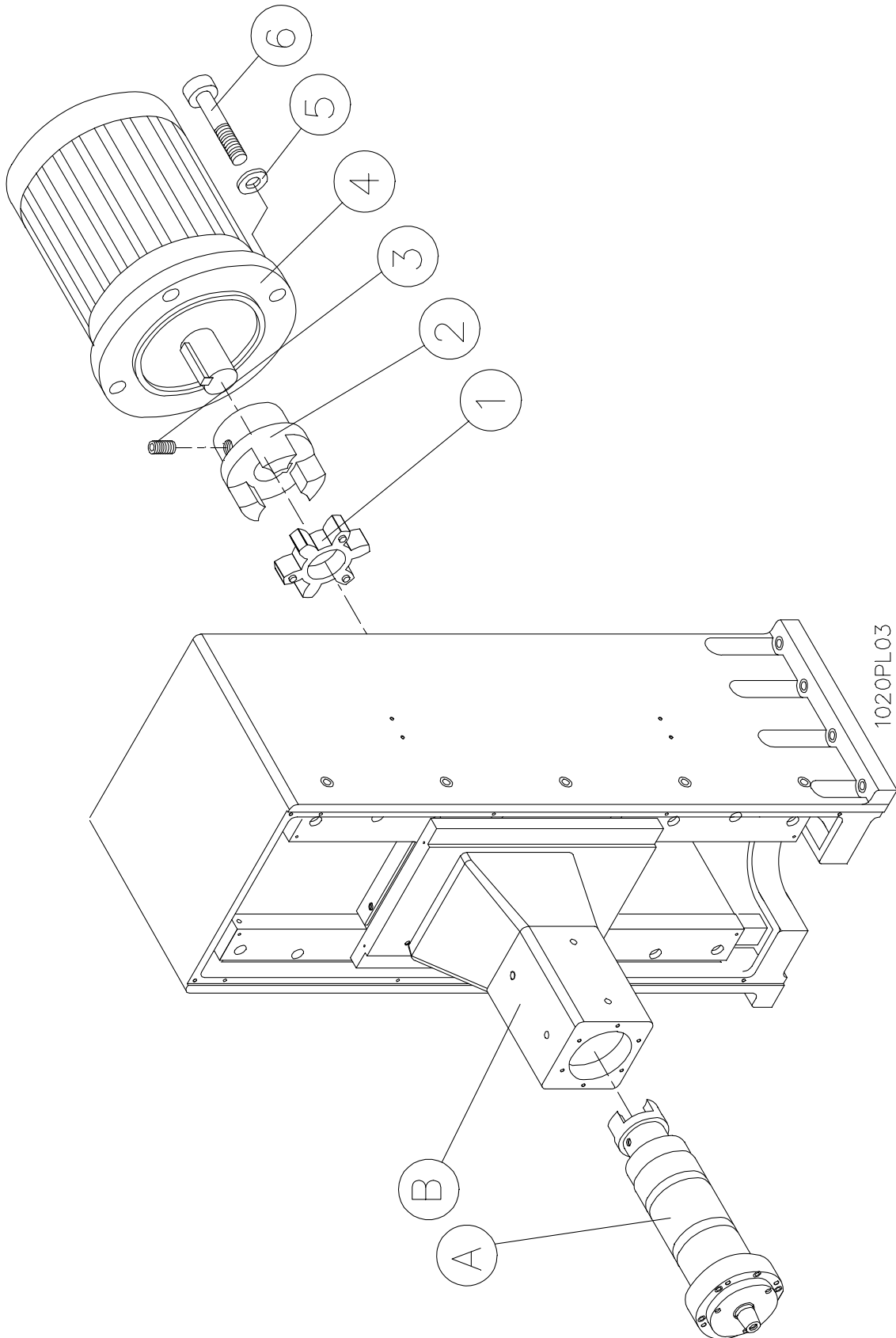
COLUMN (2521) for1020

NO.	PART NO.	DESCRIPTION	Q'TY	SPEC.
1.	0106007005	SPINDLE SEAT	1	
2.	0206006005	COLUMN	1	
3.	2260016005	COLUMN RAIL	2	
4.	0640004005	SPINDLE SEAT 'S PRESSING PLATE	2	
5.	2890006005	VERTICAL BACK SLIDE PLATE	4	
6.		DOWEL PIN	2	D8*20L
6.1		DOWEL PIN	2	D8*20L
6.2		DOWEL PIN	2	D8*20L
6.3		DOWEL PIN	2	D8*20L
7.	2420020015	VERTICAL SLIDE PLATE	2	
8.	2890005005	VERTICAL SLIDE PLATE ADJUSTING BLOCK	2	
9.		HEADLESS SCREW	1	M12*25L
10.		HEADLESS SCREW	4	M10*50L
10.1		HEADLESS SCREW	4	M10*50L
11.		HEADLESS SCREW	1	M10*30L
11.1		HEADLESS SCREW	1	M10*30L
12.		HEADLESS SCREW	1	M10*10L
12.1		HEADLESS SCREW	1	M10*10L
13.		SOCK HEAD CAP SCREW	9	M10*40L
13.1		SOCK HEAD CAP SCREW	9	M10*40L
14.		SOCK HEAD CAP SCREW	5	M10*30L
14.1		SOCK HEAD CAP SCREW	5	M10*30L
15.		SOCK HEAD CAP SCREW	4	M12*80L
15.1		SOCK HEAD CAP SCREW	4	M12*80L
16.		NUT	4	M12
16.1		NUT	4	M12
17.		NUT	1	M12
18.		HEX SOCKET SCREW	1	M12*70L
19.	2000077005	BASE COVER	1	
20.		CROSS HEAD SCREW	2	M6*8L
21.		SOCK HEAD CAP SCREW	8	M16*60L
22.		SPRING WASHER	8	φ 16
23.		HEADLESS SCREW	8	M10*16L

COLUMN (3021) for 1224

NO.	PART NO.	DESCRIPTION	Q'TY	SPEC.
1.	0106027015	SPINDLE SEAT	1	
2.	0206007005	COLUMN	1	
3.	2260017005	COLUMN RAIL	2	
4.	0640004005	SPINDLE SEAT 'S PRESSING PLATE	2	
5.	2890006005	VERTICAL BACK SLIDE PLATE	4	
6.		DOWEL PIN	2	D8*20L
6.1		DOWEL PIN	2	D8*20L
6.2		DOWEL PIN	2	D8*20L
6.3		DOWEL PIN	2	D8*20L
7.	2420020015	VERTICAL SLIDE PLATE	2	
8.	2890005005	VERTICAL SLIDE PLATE ADJUSTING BLOCK	2	
9.		HEADLESS SCREW	1	M12*25L
10.		HEADLESS SCREW	4	M10*50L
10.1		HEADLESS SCREW	4	M10*50L
11.		HEADLESS SCREW	1	M10*30L
11.1		HEADLESS SCREW	1	M10*30L
12.		HEADLESS SCREW	1	M10*10L
12.1		HEADLESS SCREW	1	M10*10L
13.		SOCK HEAD CAP SCREW	9	M10*40L
13.1		SOCK HEAD CAP SCREW	9	M10*40L
14.		SOCK HEAD CAP SCREW	5	M10*30L
14.1		SOCK HEAD CAP SCREW	5	M10*30L
15.		SOCK HEAD CAP SCREW	4	M12*80L
15.1		SOCK HEAD CAP SCREW	4	M12*80L
16.		NUT	4	M12
16.1		NUT	4	M12
17.		NUT	1	M12
18.		HEX SOCKET SCREW	1	M12*70L
19.	2000077005	BASE COVER	1	
20.		CROSS HEAD SCREW	2	M6*8L
21.		SOCK HEAD CAP SCREW	8	M16*60L
22.		SPRING WASHER	8	φ 16
23.		HEADLESS SCREW	8	M10*16L

COLUMN & SPINDLE



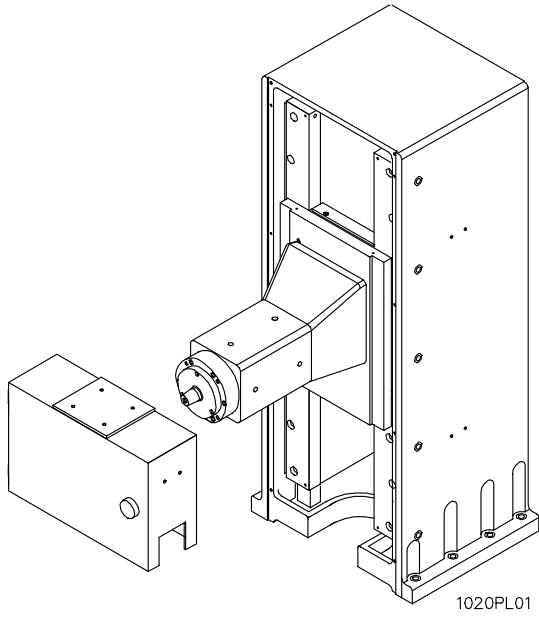
COLUMN & SPINDLE
(2510) for 8" /1020 SERIES WHEEL

NO.	PART NO.	DESCRIPTION	Q'TY	SPEC.
1.	2760005005	RUBBER COUPLING	1	
2.	2770003005	MOTOR COUPLING	1	
3.		HEADLESS SCREW	2	M8*10L
4.		SPINDLE MOTOR	1	3HP2Pxxx/xxxV
5.		SPRING WASHER	4	D10
6.		SOCK HEAD CAP SCREW	4	M10*35L
A.		SPINDLE (REF.PL-01)	1	
B.		COLUMN (REF.PL-02)	1	

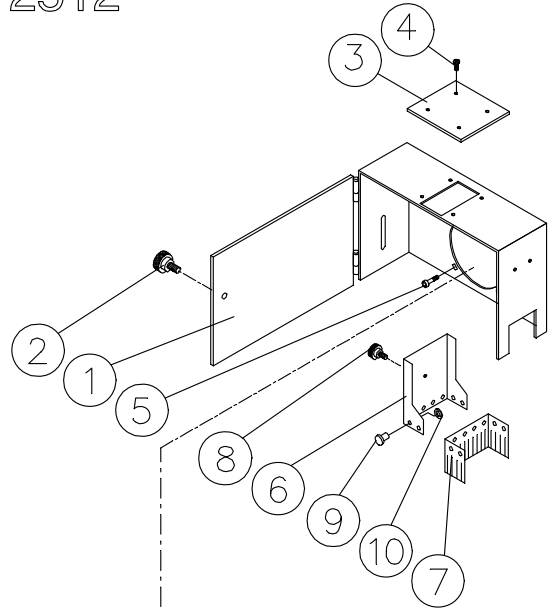
COLUMN & SPINDLE
(3010) for 12"/1224 SERIES WHEEL

NO.	PART NO.	DESCRIPTION	Q'TY	SPEC.
1.	2760005005	RUBBER COUPLING	1	
2.	2770020005	MOTOR COUPLING	1	
3.		HEADLESS SCREW	2	M8*10L
4.		SPINDLE MOTOR	1	5HP4Pxxx/xxxV
5.		SPRING WASHER	4	D10
6.		SOCK HEAD CAP SCREW	4	M10*35L
A.		SPINDLE (REF.PL-01)	1	
B.		COLUMN (REF.PL-02)	1	

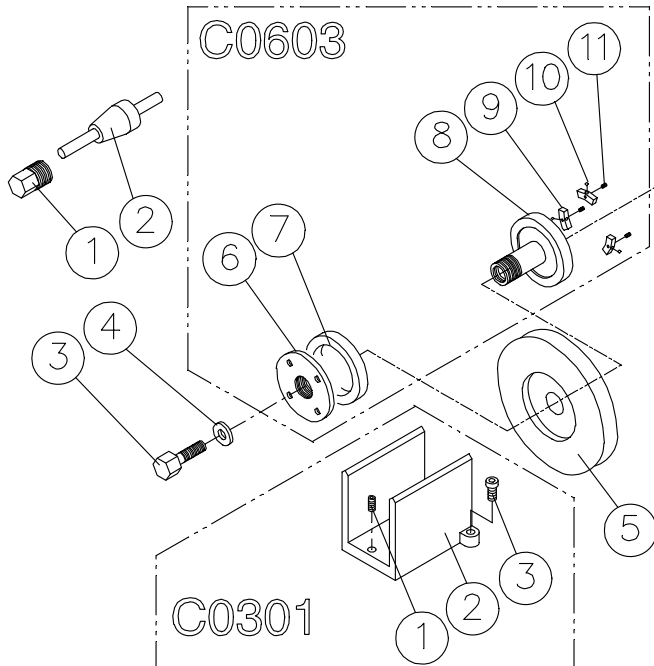
WHEEL GUARD & WHEEL FLANGE (1020)



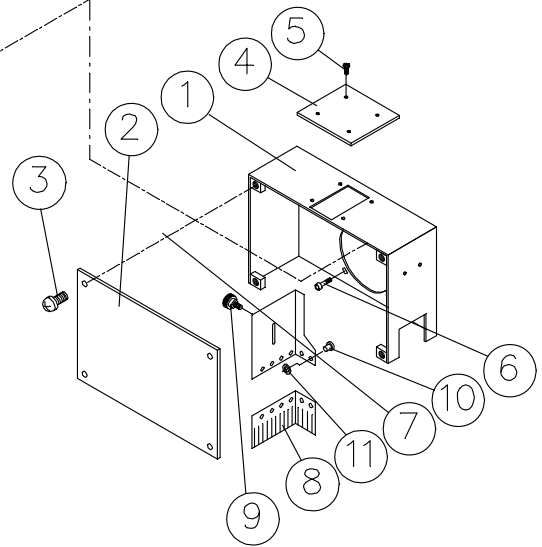
2512



2513



2512CE



WHEEL GUARD & WHEEL FLANGE (1020)**WHEEL GUARD (2512)**

NO.	PART NO.	DESCRIPTION	Q'TY	SPEC.
1.	3900006015	GRINDING WHEEL GUARD	1	
2.	2620007015	GRINDING WHEEL GUARD BOLT	1	
3.	2620007015	GUARD PLATE	1	
4.		CROSS HEAD SCREW	2	M6*10L
5.		INNER HEX SCREW	4	M8*20L
6.	2350003005	MOVABLE GUARD SHEET	1	
7.	3850002005	DUST RUBBER PIECE	1	
8.		INNER HEX SCREW	1	M6*14L
9.		ALUMINIUM RIVET	8	D3*5L
10.		WASHER	8	M3

WHEEL GUARD (2512CE)

NO.	PART NO.	DESCRIPTION	Q'TY	SPEC.
1.	3900057005	WHEEL GUARD	1	
2.	3910026005	WHEEL GUARD DOOR	1	
3.		CROSS HEAD SCREW	4	M8*14L
4.	2000067005	GUARD PLATE	1	
5.		HEX HEAD SCREW	4	M6*10L
6.		INNER HEX SCREW	4	M8*20L
7.	2350003005	MOVABLE GUARD SHEET	1	
8.	3850002005	DUST RUBBER PIECE	1	
9.		INNER HEX SCREW	1	M6*14L
10.		ALUMINIUM RIVET	8	D3*5L
11.		WASHER	8	M3

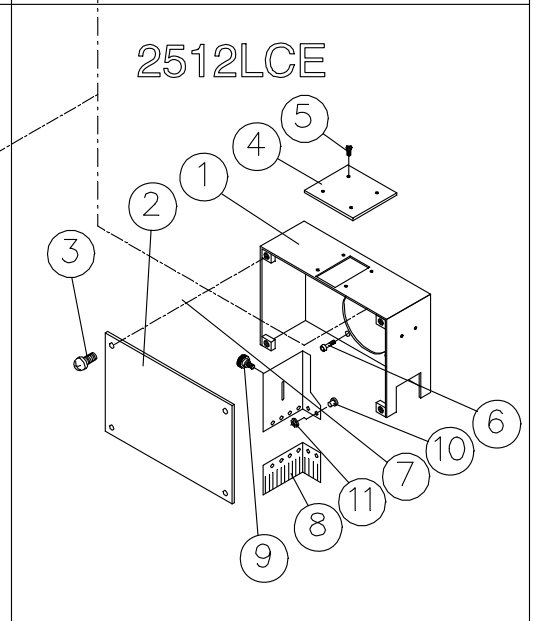
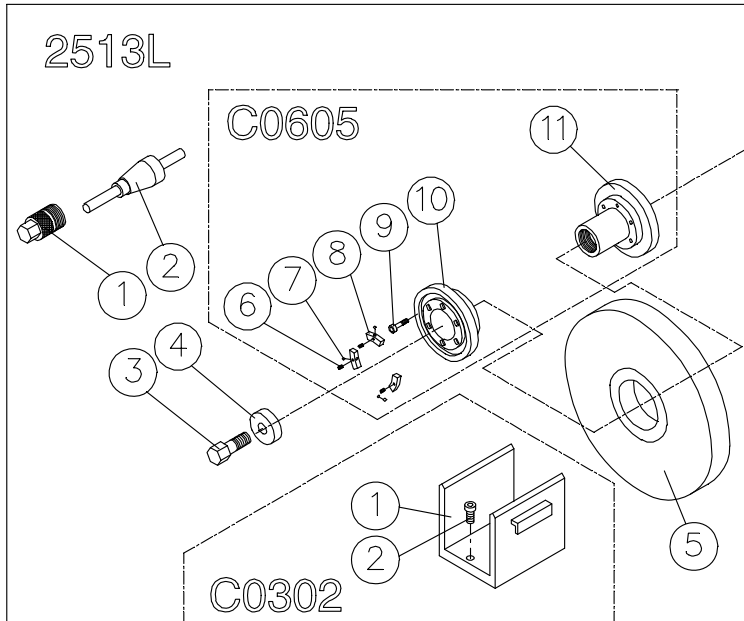
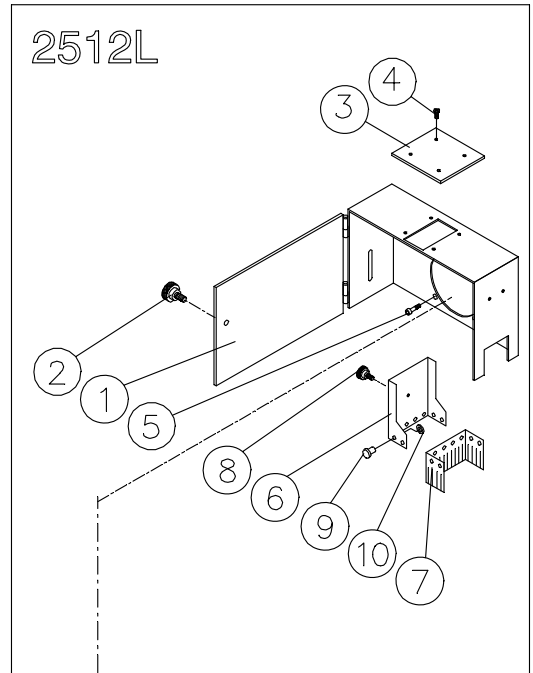
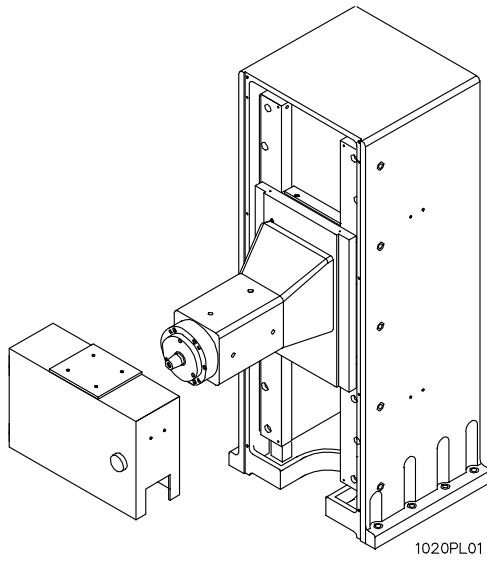
WHEEL ASSEMBLY (2513)

NO.	PART NO.	DESCRIPTION	Q'TY	SPEC.
1.	2630035005	WHEEL EXTRACTOR	1	
2.	1080005005	BALANCING ARBOR	1	
3.	2620006005	NUT	1	
4.	2410032005	WASHER	1	
5.		GRINDING WHEEL	1	ϕ 203* ϕ 31.75*19MM
6.	3950002015	WHEEL SETTING NUT	1	
7.	3930010005	WASHER	1	
8.	3920016005	WHEEL HUB	1	
9.	3960001005	BALANCE BLOCK	3	
10.		STEEL BALL	3	ϕ 4
11.		SET SCREW	3	M5*5L

BALANCING STAND (C0301)

NO.	PART NO.	DESCRIPTION	Q'TY	SPEC.
1.		SET SCREW	1	M8*16L
2.	1000001005	BALANCING STAND	1	
3.		HEX SOCKET SCREW	2	M8*25L

WHEEL GUARD & WHEEL FLANGE (1224)



WHEEL GUARD & WHEEL FLANGE (1224)**WHEEL GUARD (2512L)**

NO.	PART NO.	DESCRIPTION	Q'TY	SPEC.
1.	3900008015	GRINDING WHEEL GUARD	1	
2.	2620007015	GRINDING WHEEL GUARD BOLT	1	
3.	2000067005	GUARD PLATE	1	
4.		CROSS HEAD SCREW	2	M6*10L
5.		INNER HEX SCREW	4	M8*20L
6.	2350005005	MOVABLE GUARD SHEET	1	
7.	3850004005	DUST RUBBER PIECE	1	
8.		INNER HEX SCREW	1	M6*14L
9.		ALUMINIUM RIVET	8	D3*5L
10.		WASHER	8	M3

WHEEL GUARD (2512LCE)

NO.	PART NO.	DESCRIPTION	Q'TY	SPEC.
1.	1910002005	WHEEL GUARD	1	
2.	2000097005	WHEEL GUARD DOOR	1	
3.		CROSS HEAD SCREW	4	M8*14L
4.	2000067005	GUARD PLATE	1	
5.		HEX HEAD SCREW	4	M6*10L
6.		INNER HEX SCREW	4	M8*20L
7.	2350004005	MOVABLE GUARD SHEET	1	
8.	3850002005	DUST RUBBER PIECE	1	
9.		INNER HEX SCREW	1	M6*14L
10.		ALUMINIUM RIVET	8	D3*5L
11.		WASHER	8	M3

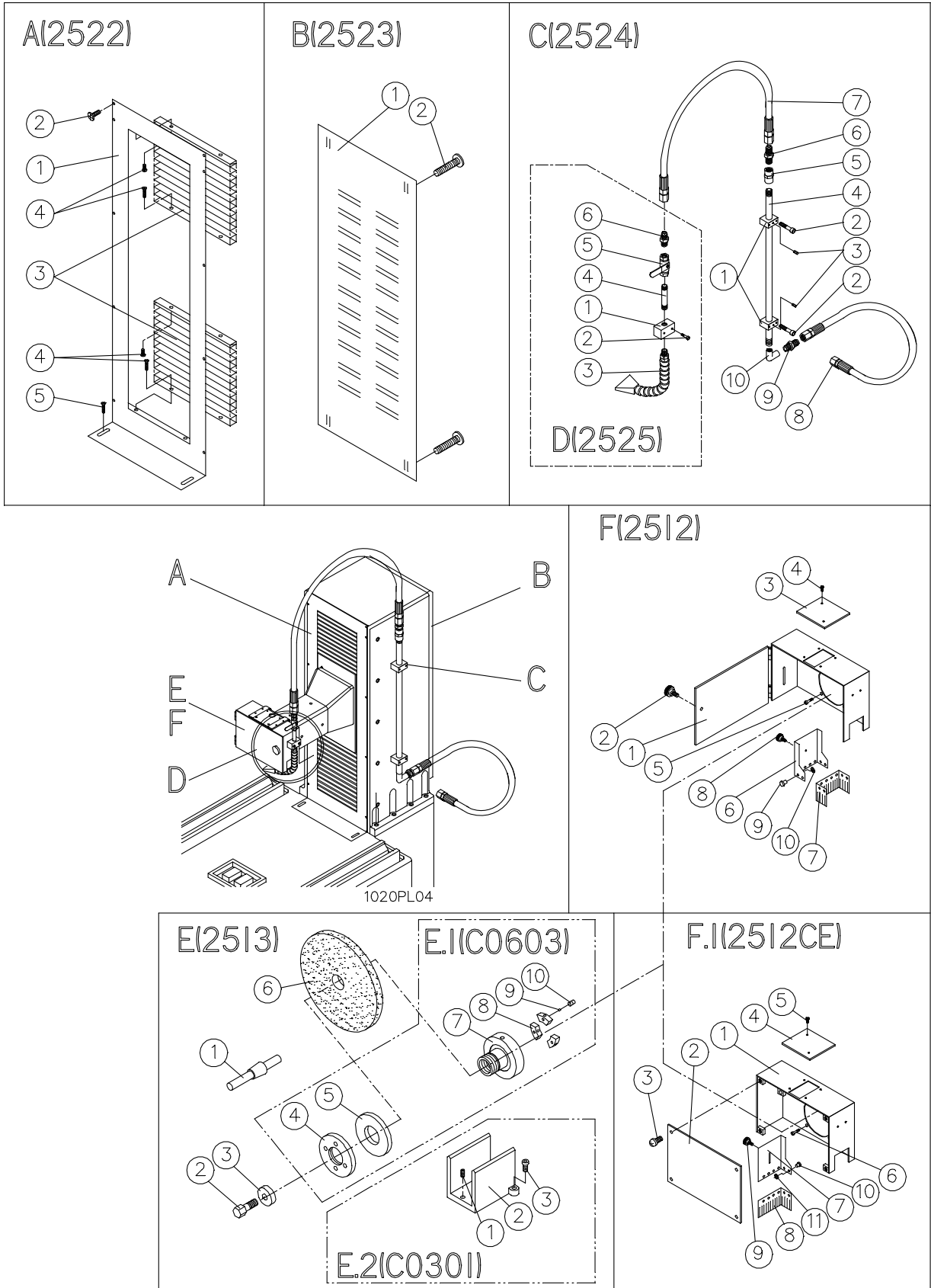
WHEEL ASSEMBLY (2513L)

NO.	PART NO.	DESCRIPTION	Q'TY	SPEC.
1.	1910002005	WHEEL EXTRACTOR	1	
2.	2000097005	BALANCING ARBOR	1	
3.	2620032005	NUT	1	
4.	2410033005	WASHER	1	
5.		12"GRINDING WHEEL	1	ϕ 305* ϕ 76.2*31.75MM
6.		STEEL BALL	3	ϕ 4
7.		SET SCREW	3	M5*5L
8.	3920016005	WHEEL HUB	3	
9.	3960004005	BALANCE BLOCK	3	
10.	3930013005	WASHER	1	
11.	3920006005	WHEEL HUB	1	

BALANCING STAND (C0302)

NO.	PART NO.	DESCRIPTION	Q'TY	SPEC.
1.	1000002005	BALANCING STAND	1	
2.		HEX SOCKET SCREW	3	M8*35L

GRINDING WHEEL & COLUMN (1020)



GRINDING WHEEL & COLUMN (1020)

A: COLUMN FRONT DUST FENDER (2522)

NO.	PART NO.	DESCRIPTION	Q'TY	SPEC.
1.	2000071005	COLUMN FRONT FENDER	1	(2522)
2.		CROSS HEAD SCREW	10	M6*8L
3.	3480005005	COLUMN FRONT DUST SHEET	2	
4.		CROSS HEAD SCREW	8	M4*10L
5.		CROSS HEAD SCREW	2	M6*10L

B: COLUMN REAR DUST FENDER (2523/1020)

NO.	PART NO.	DESCRIPTION	Q'TY	SPEC.
1.	2000075005	COLUMN REAR SEALED PLATE	1	
2.		CROSS HEAD SCREW	4	M6*10L

C: WATER PIPE (2524)

NO.	PART NO.	DESCRIPTION	Q'TY	SPEC.
1.	2000075005	WATER PIPE'S FIXING BLOCK	2	
2.		INNER HEX SCREW	4	M6*55L
3.		INNER HEX HEADLESS SCREW	2	M6*6L
4.	1400004005	WATER PIPE	1	
5.		INSIDE THREAD STRAIGHT CONNECTION	2	1/2PT
6.		HIGH PRESSURE PIPE CONNECTION	1	1/2PT*3/8PH
7.		HIGH PRESSURE PIPE	1	3/8PH*960L
8.		HIGH PRESSURE PIPE	1	1/2PH*1200L
9.		HIGH PRESSURE PIPE CONNECTION	1	1/2PT*1/2PH
10.		INSIDE THREAD 90° CONNECTION	1	1/2PT

D. COOLANT NOZZLE SET (2525)

NO.	PART NO.	DESCRIPTION	Q'TY	SPEC.
1.	1830004005	WATER NOZZLE SEAT	1	
2.		INNER HEX SCREW	2	M6*12L
3.		WATER NOZZLE	1	1/2PT
4.		WATER PIPE	1	1/2PT*2"L
5.		BALL VALVE	1	1/2PT
6.		HIGH PRESSURE PIPE CONNECTION	1	1/2PT*3/8PH

E. WHEEL ASSEMBLY (2513)

NO.	PART NO.	DESCRIPTION	Q'TY	SPEC.
1.	1080005005	BALANCING ARBOR	1	
2.	2620006005	NUT	1	
3.	2410032005	WASHER	1	
4.		GRINDING WHEEL	1	φ 203* φ 31.75*19MM
5.	3950002015	WHEEL SETTING NUT	1	

NO.	PART NO.	DESCRIPTION	Q'TY	SPEC.
6.	3930010005	WASHER	1	
7.	3920016005	WHEEL HUB	1	
8.	3960001005	BALANCE BLOCK	3	
9.		STEEL BALL	3	φ4
10.		SET SCREW	3	M5*5L

E.2 BALANCING STAND (C0301)

NO.	PART NO.	DESCRIPTION	Q'TY	SPEC.
1.		SET SCREW	1	M8*16L
2.	1000001005	BALANCING STAND	1	
3.		HEX SOCKET SCREW	2	M8*25L

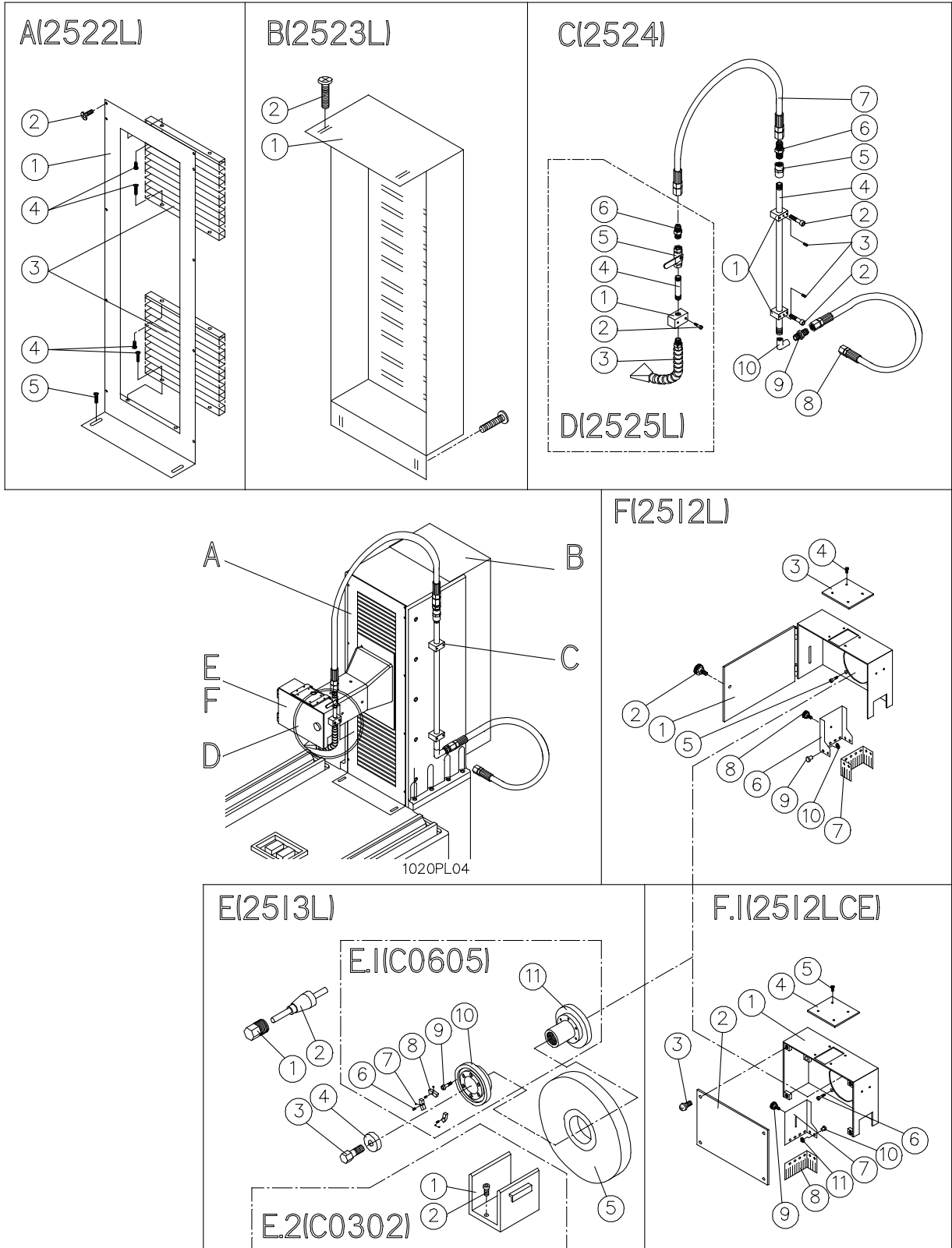
F. WHEEL GUARD (2512)

NO.	PART NO.	DESCRIPTION	Q'TY	SPEC.
1.	3900006015	GRINDING WHEEL GUARD	1	
2.	2620007015	GRINDING WHEEL GUARD BOLT	1	
3.	2000067005	GUARD PLATE	1	
4.		CROSS HEAD SCREW	2	M6*10L
5.		INNER HEX SCREW	4	M8*20L
6.	2350003005	MOVABLE GUARD SHEET	1	
7.	3850002005	DUST RUBBER PIECE		1
8.		INNER HEX SCREW	1	M6*14L
9.		ALUMINIUM RIVET	8	φ3*5L
10.		WASHER	8	φ3

F.1 WHEEL GUARD (2512CE)

NO.	PART NO.	DESCRIPTION	Q'TY	SPEC.
1.	3900057005	WHEEL GUARD	1	
2.	3910026005	WHEEL GUARD DOOR	1	
3.		CROSS HEAD SCREW	4	M8*14L
4.	2000067005	GUARD PLATE	1	
5.		HEX HEAD SCREW	4	M6*10L
6.		INNER HEX SCREW	4	M8*20L
7.	2350003005	MOVABLE GUARD SHEET	1	
8.	3850002005	DUST RUBBER PIECE	1	
9.		INNER HEX SCREW	1	M6*14L
10.		ALUMINIUM RIVET	8	φ3*5L
11.		WASHER	8	φ3

GRINDING WHEEL & COLUMN (1224)



GRINDING WHEEL & COLUMN(1224)

A: COLUMN FRONT DUST FENDER (2522L)

NO.	PART NO.	DESCRIPTION	Q'TY	SPEC.
1.	2000072005	COLUMN FRONT FENDER	1	(2522L)
2.		CROSS HEAD SCREW	10	M6*8L
3.	3480005005	COLUMN FRONT DUST SHEET	2	
4.		CROSS HEAD SCREW	8	M4*10L
5.		CROSS HEAD SCREW	2	M6*10L

B: COLUMN REAR DUST FENDER (2523L)

NO.	PART NO.	DESCRIPTION	Q'TY	SPEC.
1.	2000074005	COLUMN REAR DUST FENDER (2523L)	1	
2.		CROSS HEAD SCREW 4		M6*10L

C: WATER PIPE (2524)

NO.	PART NO.	DESCRIPTION	Q'TY	SPEC.
1.	2420033005	WATER PIPE'S FIXING BLOCK	2	
2.		INNER HEX SCREW	4	M6*55L
3.		INNER HEX HEADLESS SCREW	2	M6*6L
4.	1400004005	WATER PIPE	1	
5.		INSIDE THREAD STRAIGHT CONNECTION	2	1/2PT
6.		HIGH PRESSURE PIPE CONNECTION	1	1/2PT*3/8PH
7.		HIGH PRESSURE PIPE	1	3/8PH*960L
8.		HIGH PRESSURE PIPE	1	1/2PH*1200L
9.		HIGH PRESSURE PIPE CONNECTION	1	1/2PT*1/2PH
10.		INSIDE THREAD 90° CONNECTION	1	1/2PT

D. COLANT NOZZLE SET (2525L)

NO.	PART NO.	DESCRIPTION	Q'TY	SPEC.
1.	1830014005	WATER NOZZLE SEAT	1	
2.		INNER HEX SCREW	2	M6*12L
3.		WATER NOZZLE	1	1/2PT
4.		WATER PIPE	1	1/2PT*2"L
5.		BALL VALVE	1	1/2PT
6.		HIGH PRESSURE PIPE CONNECTION	1	1/2PT*3/8PH

E. WHEEL ASSEMBLY (2513L)

NO.	PART NO.	DESCRIPTION	Q'TY	SPEC.
1.	3940004005	WHEEL EXTRACTOR	1	
2.	1080007005	BALANCING ARBOR	1	
3.	2620032005	NUT	1	
4.	2410033005	WASHER	1	
5.		12"GRINDING WHEEL	1	φ 305* φ 76.2*31.75MM

NO.	PART NO.	DESCRIPTION	Q'TY	SPEC.
6.		STEEL BALL	3	φ4
7.		SET SCREW	3	M5*5L
8.	3920016005	WHEEL HUB	3	
9.	3960004005	BALANCE BLOCK	3	
10.	3930013005	WASHER	1	
11.	3920006005	WHEEL HUB	1	

E.2 BALANCING STAND (C0302)

NO.	PART NO.	DESCRIPTION	Q'TY	SPEC.
1.	1000002005	BALANCING STAND	1	
2.		HEX SOCKET SCREW	3	M8*35L

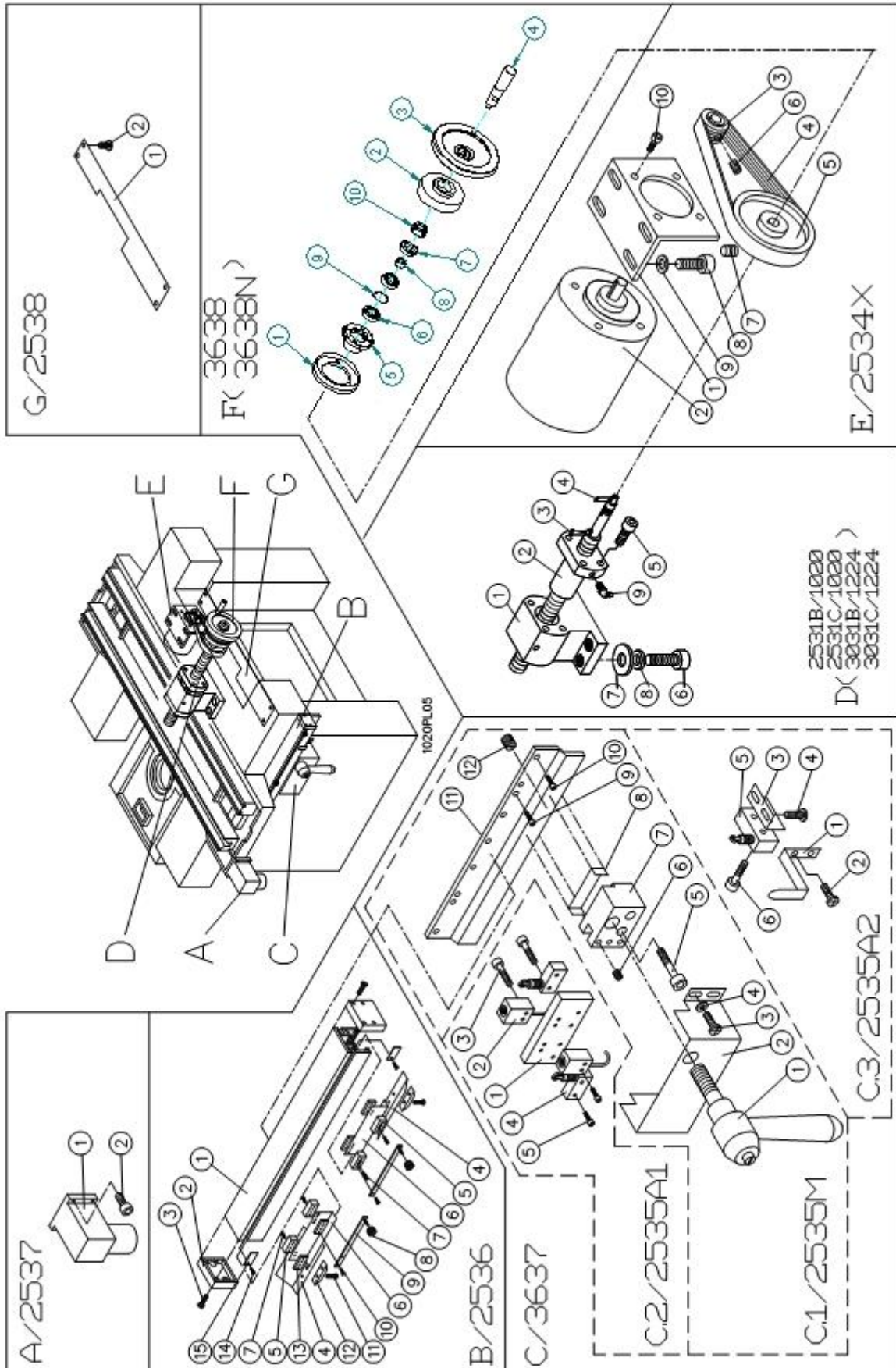
F. WHEEL GUARD (2512L)

NO.	PART NO.	DESCRIPTION	Q'TY	SPEC.
1.	3900008015	GRINDING WHEEL GUARD	1	
2.	2620007015	GRINDING WHEEL GUARD BOLT	1	
3.	2000067005	GUARD PLATE	1	
4.		CROSS HEAD SCREW	2	M6*10L
5.		INNER HEX SCREW	4	M8*20L
6.	2350005005	MOVABLE GUARD SHEET	1	
7.	3850004005	DUST RUBBER PIECE	1	
8.		INNER HEX SCREW	1	M6*14L
9.		ALUMINIUM RIVET	8	D3*5L
10.		WASHER	8	D3

F.1 WHEEL GUARD (2512LCE)

NO.	PART NO.	DESCRIPTION	Q'TY	SPEC.
1.	1910002005	WHEEL GUARD	1	
2.	2000097005	WHEEL GUARD DOOR	1	
3.		CROSS HEAD SCREW	4	M8*14L
4.	2000067005	GUARD PLATE	1	
5.		HEX HEAD SCREW	4	M6*10L
6.		INNER HEX SCREW	4	M8*20L
7.	2350004005	MOVABLE GUARD SHEET	1	
8.	3850002005	DUST RUBBER PIECE	1	
9.		INNER HEX SCREW	1	M6*14L
10.		ALUMINIUM RIVET	8	D3*5L
11.		WASHER	8	D3

SADDLE CROSSWISE DRIVE



SADDLE CROSSWISE DRIVE

A: COOLANT DRAINER (2537)

NO.	PART NO.	DESCRIPTION	Q'TY	SPEC.
1.	2450003005	COOLANT DRAINER	1	
2.		HEX SCREW	4	M6*16L

B. CROSSWISE SENSOR-DETECTED RAIL (2536)

NO.	PART NO.	DESCRIPTION	Q'TY	SPEC.
1.	2260010005	SENSOR-DETECTED RAIL	1	
2.	3870003005	SIDE COVER OF SENSOR-DETECTED RAIL	2	
3.		CROSS HEAD SCREW	8	M4*16L
4.	1740002005	INDUCTION LIMIT PLATE	2	
5.	2430003005	LOCKING BLOCK OF SENSOR-DETECTED SHEET	4	
6.	2000033005	CROSSWISE SENSOR-DETECTED SHEET	2	
7.		SOCK HEAD CAP SCREW	8	M4*14L
8.	2490033015	CLAMPING BLOCK OF SENSOR-DETECTED SHEET	2	
9.	2890017005	CROSSWISE SENSOR-DETECTED ADJUSTING BLOCK	1	
10.		CROSS HEAD SCREW	4	M4*20L
11.		CROSS HEAD SCREW	4	M4*6L
12.	2490010005	CROSSWISE LIMIT SETTING PLATE	2	
13.	2430002005	CLAMPING BLOCK OF SENSOR-DETECTED SHEET	4	
14.		CROSS HEAD SCREW	2	M4*6L
15.	2890004005	POSITIONING LIMITED PLATE	2	

C: CROSSWISE SAFETY SWITCH (3637)**C.1: CROSSWISE LOCKING DEVICE (2535M)**

NO.	PART NO.	DESCRIPTION	Q'TY	SPEC.
1.	2620035005	CROSS LOCKING HANDLE	1	
2.	1910091015	CROSSWISE INDUCTION SWITCH PROTECTION COVER	1	
3.		CROSS HEAD SCREW	4	M5*8L
4.		WASHER	4	D5
5.		INNER HEX SCREW	2	M8*65L
6.		HEADLESS SCREW	3	M6*8L
7.	2430009005	CROSS LOCKING SOCKET	1	
8.	0640045005	CROSS LOCK CLAMPING PLATE	1	
9.		INNER HEX SCREW	2	M6*16L
10.		INNER HEX SCREW	7	M4*10L
11.	2430005015	CROSS LOCKING PLATE	1	
12.	2620016005	FRICTION SCREW	1	M12*15L

C.2: CROSSWISE PROXIMITY SWITCH (2535A1)

NO.	PART NO.	DESCRIPTION	Q'TY	SPEC.
1.	1720004025	CROSS PROXIMITY SWITCH SOCKET	1	PNP5MM FL-QSP
2.		PROXIMITY SWITCH	2	17*17*28

NO.	PART NO.	DESCRIPTION	Q'TY	SPEC.
3.		CROSS HEAD SCREW	4	M3*25L
4.		LIMIT SWITCH	2	Z-15GQ22-B
5.		SOCK HEAD CAP SCREW	4	M4*25L

C.3: CROSSWISE SAFETY SWITCH (2535A2)

NO.	PART NO.	DESCRIPTION	Q'TY	SPEC.
1.	0890035005	CROSS TRAVEL INDICATOR	1	
2.		SOCK HEAD CAP SCREW	2	M5*10L
3.	2420038005	SAFETY SWITCH FIXED PLATE	1	
4.		SOCK HEAD CAP SCREW	2	M5*10L
5.		LIMIT SWITCH	1	Z-15GQ22-B
6.		SOCK HEAD CAP SCREW	2	M4*25L

D: CROSSWISE SCREW SET (2531B,2531C/1020)(3031B,3031C/1224)

NO.	PART NO.	DESCRIPTION	Q'TY	SPEC.
1.	0030003005	NUT SEAT	1	
2.	1120018005	CROSSWISE BALL SCREW	1	MM(2531C)
	1120019005	CROSSWISE BALL SCREW	1	INCH(2531B)
	1120025005	CROSSWISE BALL SCREW	1	MM(3031C)
	1120026005	CROSSWISE BALL SCREW	1	INCH(3031B)
3.		SETTING KEY	1	6*6*20L
4.		SETTING KEY	1	3*3*12L
5.		SOCKET SCREW	4	M6*16L
6.		SOCKET SCREW	4	M12*35L
7.		WASHER	4	D12
8.		SPRING WASHER	4	D12
9.		OIL NOZZLE	1	T13-8*1.0

E: CROSSWISE MOTOR SET (2534X)

NO.	PART NO.	DESCRIPTION	Q'TY	SPEC.
1.	1700034005	MOTOR FIXING PLATE	1	
2.		CROSS MOVEMENT MOTOR	1	
3.	1210035005	MOTOR PULLEY	1	
4.	F02AA55353	TIMING BELT-G	1	240J-8*20mm
5.	1210169015	PULLEY	1	
6.		SET SCREW	2	M5*6L
7.		SET SCREW	2	M6*10L
8.		HEX HEAD SCREW	4	M8*16L
9.		WASHER	4	D8
10.		HEX HEAD SCREW	4	M8*12L

F: CROSSWISE SCALE RING & HAND WHEEL (3638,3638N)

NO.	PART NO.	DESCRIPTION	Q'TY	SPEC.
1.	1890013005	SCALE INDICATING PLATE	1	
2.	0890031015	FEEDING SCALE RING(MM)	1	3638
	0890032015	FEEDING SCALE RING(IN)	1	3638N
3.	1260010005	CROSSWISE HAND WHEEL	1	
4.	4210004005	FOLDING HANDLE	1	
5.	0010010005	BEARING SEAT	1	
6.	B1100A7004	BEARING PUSHER	2	7004A
7.	2640008005	BEARING LOCKING NUT	1	
8.	1430026005	REAR BEARING IN SCREW	1	
9.	1440027005	BEARING SPACER	1	
10.		LOCKED NUT	1	M20x1.0P

G: CROSSWISE PROTECTION SET (2538)

NO.	PART NO.	DESCRIPTION	Q'TY	SPEC.
1.	1910034005	PROTECTION PLATE	1	
2.		CROSS HEAD SCREW	4	M5*8L

TABLE LONGITUDINAL DRIVE (1020)

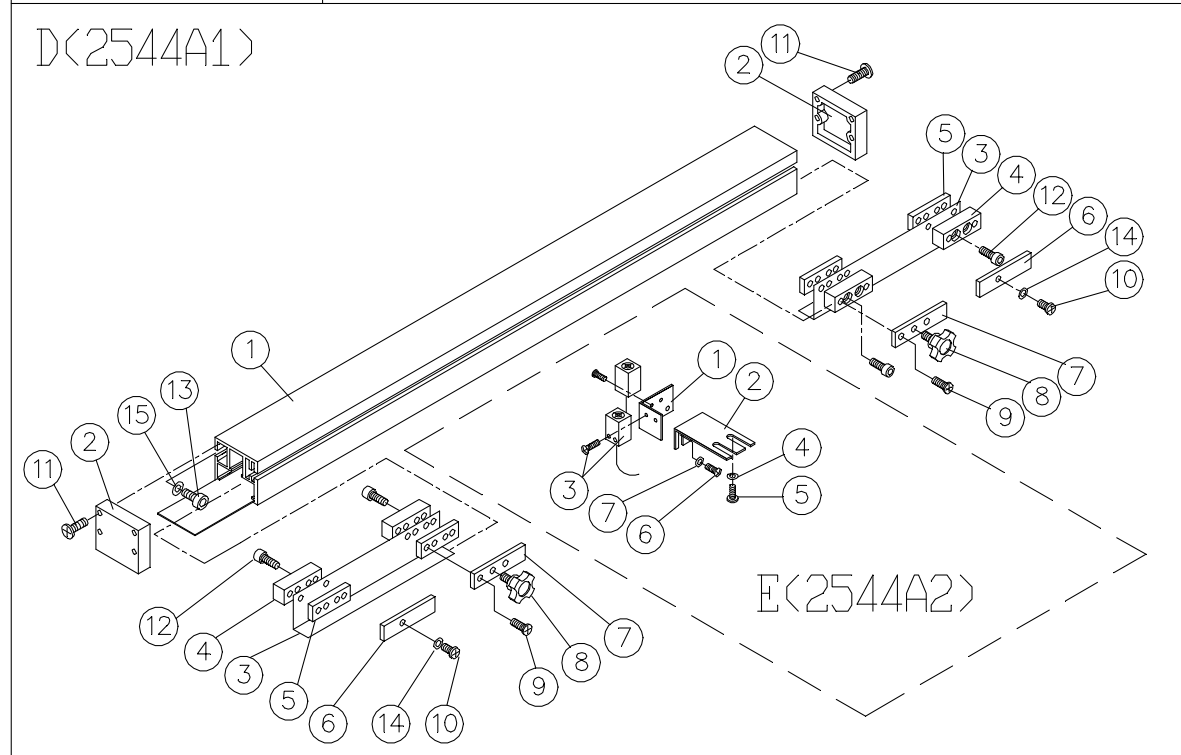
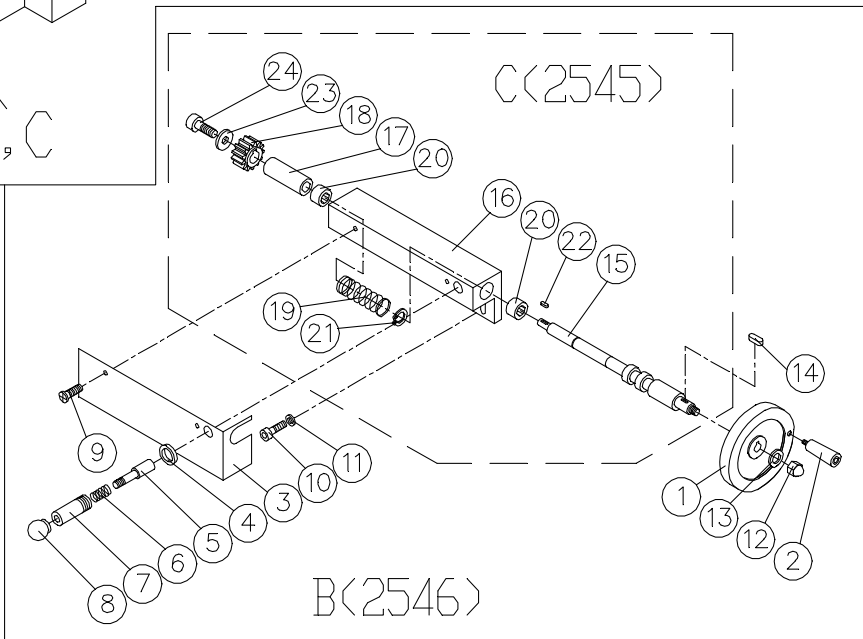
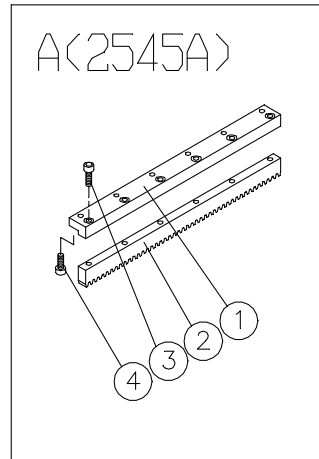
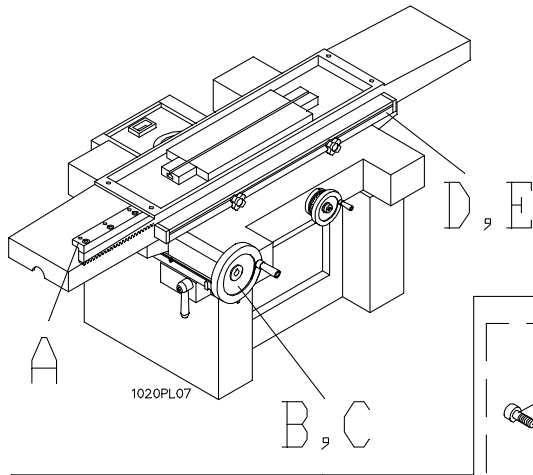


TABLE LONGITUDINAL DRIVE (1020)**A: LONGITUDINAL RACK SET (2545A)**

NO.	PART NO.	DESCRIPTION	Q'TY	SPEC.
1.	1830018005	LONGITUDINAL RACK SEAT	1	
2.	1150002005	LONGITUDINAL RACK	1	
3.		SOCK HEAD CAP SCREW	6	M6*25L
4.		SOCK HEAD CAP SCREW	6	M6*20L

B: LONGITUDINAL HAND WHEEL SET (2546)

NO.	PART NO.	DESCRIPTION	Q'TY	SPEC.
1.	1260013005	HAND WHEEL	1	
2.	4210007005	HANDLE	1	
3.	1910037005	DRIVING SHAFT PROTECTION COVER	1	
4.		SEAL RING	1	$\phi 12^* \phi 15^*3L$
5.	2610005005	MOVABLE PIN	1	
6.	2700003005	COMPRESSION SPRING	1	
7.	2490003005	LOCATING SEAT	1	
8.	3870002005	PLASTIC BLACK BALL	1	
9.		CROSS HEAD SCREW	2	M6*8L
10.		INNER HEX SCREW	2	M8*20L
11.		WASHER	2	$\phi 8$
12.		CUP NUT	1	M12
13.		WASHER	1	$\phi 12$
14.		SETTING KEY	1	5*5*14L

C: LONGITUDINAL TRANSMISSION SET (2545)

NO.	PART NO.	DESCRIPTION	Q'TY	SPEC.
15.	1030001005	LONGITUDINAL DRIVING SHAFT	1	
16.	0050001005	LONGITUDINAL DRIVING SEAT	1	
17.	2490006005	LONGITUDINAL POSITIONING CASING	1	
18.	1200022005	LONGITUDINAL DRIVING GEAR	1	
19.		COMPRESSION SPRING	1	$\phi 1.4^* \phi 17.6^*115mm$
20.		NEEDLE BEARING	2	FJ-1712
21.		WASHER	1	C17
22.		SETTING KEY	1	4*4*12L
23.	2410024005	GEAR FIXING WASHER	1	
24.		SOCK HEAD CAP SCREW	1	M5*14L

D: LONGITUDINAL SENSOR-DETECTED SET(2544A1)

NO.	PART NO.	DESCRIPTION	Q'TY	SPEC.
1.	2260024005	LONGITUDINAL INDUCTION RAIL	1	
2.	3870003005	SIDE COVER OF INDUCTION RAIL	2	
3.	2000033005	LONGITUDINAL SENSOR-DETECTED SHEET	2	
4.	2430003005	LOCKING BLOCK OF SENSOR-DETECTED SHEET	4	

NO.	PART NO.	DESCRIPTION	Q'TY	SPEC.
5.	2430002005	CLAMPING BLOCK OF SENSOR-DETECTED SHEET	4	
6.	2490004005	LONGITUDINAL LIMIT BLOCK	2	
7.	2890004005	LONGITUDINAL SENSOR ADJUSTING BLOCK	2	
8.	2620005005	LOBE KNOB	2	
9.		CROSS HEAD SCREW	4	M4*20L
10.		CROSS HEAD SCREW	2	M4*8L
11.		CROSS HEAD SCREW	8	M4*16L
12.		SOCK HEAD CAP SCREW	8	M5*14L
13.		SOCK HEAD CAP SCREW	2	M6*16L
14.		SOCK HEAD PLATE WASHER	2	φ 4
15.		SOCK HEAD PLATE WASHER	2	φ 6

E: PROXIMITY SWITCH (2544A2)

NO.	PART NO.	DESCRIPTION	Q'TY	SPEC.
1.	1810053005	FIXING PLATE	1	
2.	2890009005	ADJUSTING PLATE	1	
3.		PROXIMITY SWITCH	2	PNP5mm(17*17*28mm)
4.		WASHER	2	φ 5
5.		CROSS HEAD SCREW	2	M5*10L
6.		CROSS HEAD SCREW	2	M4*6L
7.		WASHER	2	φ 4

TABLE LONGITUDINAL DRIVE (1224)

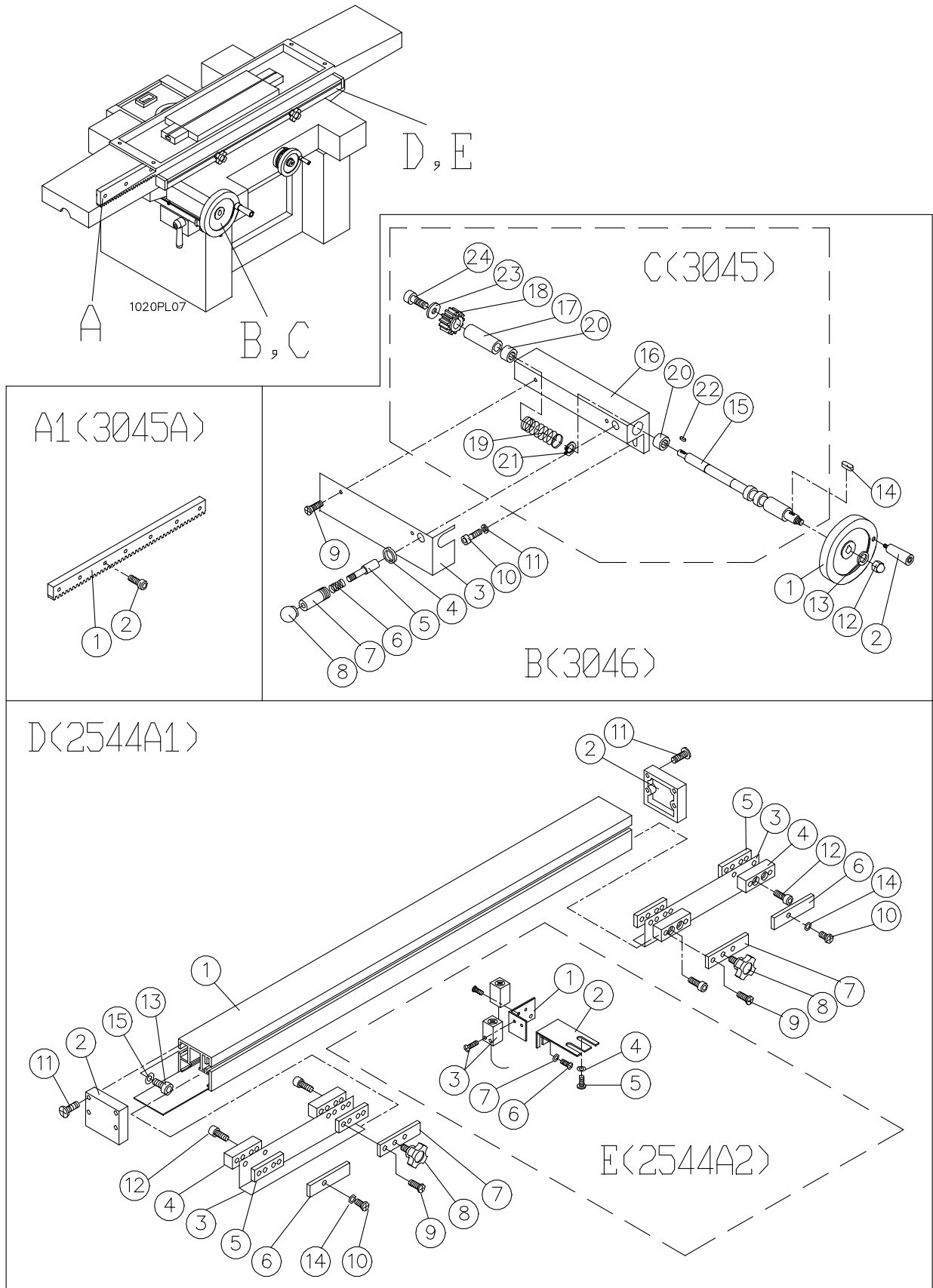


TABLE LONGITUDINAL DRIVE (1224)**A: LONGITUDINAL RACK SET (3045A)**

NO.	PART NO.	DESCRIPTION	Q'TY	SPEC.
1.	1150004005	LONGITUDINAL RACK	1	
2.		SOCK HEAD CAP SCREW	7	M6*20L

B: LONGITUDINAL HAND WHEEL SET (3046)

NO.	PART NO.	DESCRIPTION	Q'TY	SPEC.
1.	1260013005	HAND WHEEL	1	
2.	4210007005	HANDLE	1	
3.	1910048005	DRIVING SHAFT PROTECTION COVER	1	
4.		SEAL RING	1	$\phi 12^* \phi 15^*3L$
5.	2610005005	MOVABLE PIN	1	
6.	2700003005	COMPRESSION SPRING	1	
7.	2490003005	LOCATING SEAT	1	
8.	3870002005	PLASTIC BLACK BALL	1	
9.		CROSS HEAD SCREW	2	M6*8L
10.		INNER HEX SCREW	2	M8*20L
11.		WASHER	2	$\phi 8$
12.		CUP NUT	1	M12
13.		WASHER	1	$\phi 12$
14.		SETTING KEY	1	5*5*14L

C: LONGITUDINAL TRANSMISSION SET (3045)

NO.	PART NO.	DESCRIPTION	Q'TY	SPEC.
15.	1030052005	LONGITUDINAL DRIVING SHAFT	1	
16.	0050005005	LONGITUDINAL DRIVING SEAT	1	
17.	2490006005	LONGITUDINAL POSITIONING CASING	1	
18.	1200022005	LONGITUDINAL DRIVING GEAR	1	
19.		COMPRESSION SPRING	1	$\phi 1.4^* \phi 17.6^*115mm$
20.		NEEDLE BEARING	2	FJ-1712
21.		WASHER	1	C17
22.		SETTING KEY	1	4*4*12L
23.	2410024005	GEAR FIXING WASHER	1	
24.		SOCK HEAD CAP SCREW	1	M5*14L

D: LONGITUDINAL SENSOR-DETECTED SET(2544A1)

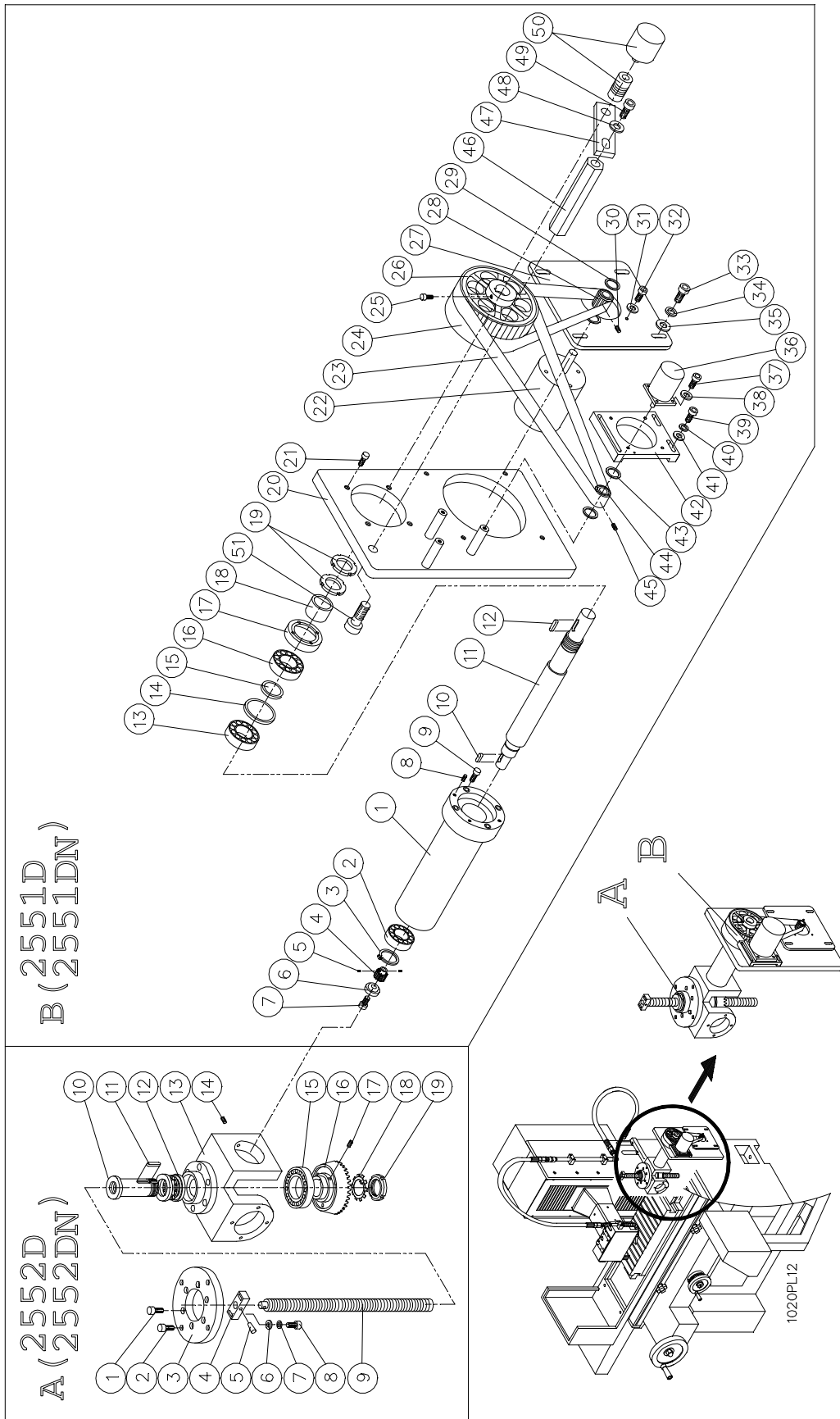
NO.	PART NO.	DESCRIPTION	Q'TY	SPEC.
1.	2260024005	LONGITUDINAL INDUCTION RAIL	1	
2.	3870003005	SIDE COVER OF INDUCTION RAIL	2	
3.	2000033005	LONGITUDINAL SENSOR-DETECTED SHEET	2	
4.	2430003005	LOCKING BLOCK OF SENSOR-DETECTED SHEET	4	
5.	2430002005	CLAMPING BLOCK OF SENSOR-DETECTED SHEET	4	

NO.	PART NO.	DESCRIPTION	Q'TY	SPEC.
6.	2490004005	LONGITUDINAL LIMIT BLOCK	2	
7.	2890004005	LONGITUDINAL SENSOR ADJUSTING BLOCK	2	
8.	2620005005	LOBE KNOB	2	
9.		CROSS HEAD SCREW	4	M4*20L
10.		CROSS HEAD SCREW	2	M4*8L
11.		CROSS HEAD SCREW	8	M4*16L
12.		SOCK HEAD CAP SCREW	8	M5*14L
13.		SOCK HEAD CAP SCREW	2	M6*16L
14.		SOCK HEAD PLATE WASHER	2	φ 4
15.		SOCK HEAD PLATE WASHER	2	φ 6

E: PROXIMITY SWITCH (2544A2)

NO.	PART NO.	DESCRIPTION	Q'TY	SPEC.
1.	1810053005	FIXING PLATE	1	
2.	2890009005	ADJUSTING PLATE	1	
3.		PROXIMITY SWITCH	2	PNP5mm(17*17*28mm)
4.		WASHER	2	φ 5
5.		CROSS HEAD SCREW	2	M5*10L
6.		CROSS HEAD SCREW	2	M4*6L
7.		WASHER	2	φ 4

VERTICAL FEED



VERTICAL FEED

A: VERTICAL LEADSCREW ASSEMBLY (2552D&2552DN)

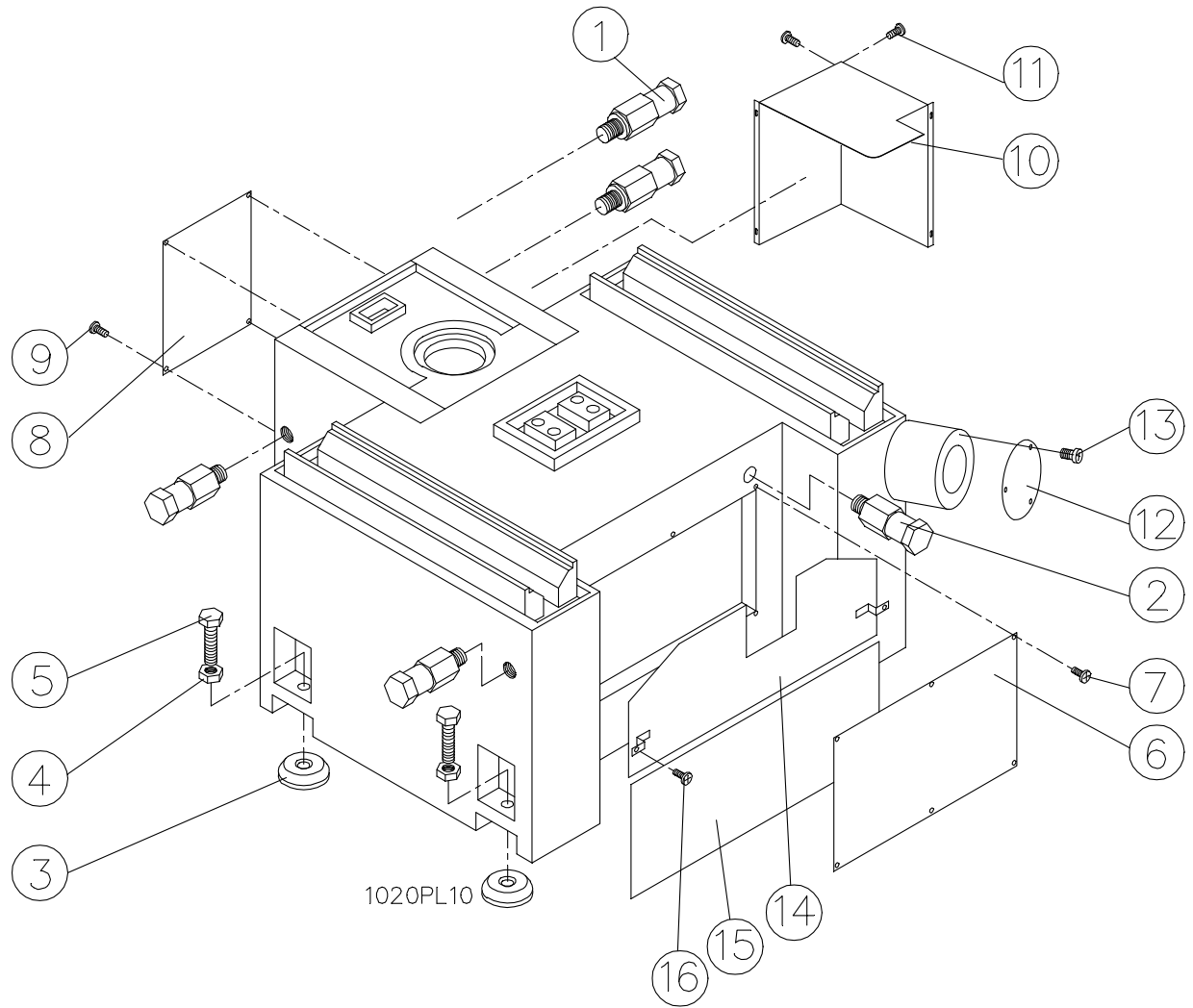
NO.	PART NO.	DESCRIPTION	Q'TY	SPEC.
1.		HEADLESS SCREW	6	M10x25L
2.		HEADLESS SCREW	4	M6x25L
3.	2420027005	FIXING PLATE OF ELEVATING NUT	1	
4.	1830033005	FIXING SEAT OF SCREW SLEEVE	1	
5.		TAPER PIN	1	#4*30L
6.		WASHER	2	φ 8
7.		SPRING WASHER	2	φ 8
8.		HEADLESS SCREW	2	M8x40L
9.	1130005005	HEIGHTENING ELEVATING SCREW	1	(2552D)
	1130006005	HEIGHTENING ELEVATING SCREW	1	(2552DN)
10.	2630047005	ELEVATING NUT	1	(2552D)
	2630048005	ELEVATING NUT	1	(2552DN)
11.		DOUBLE HEAD FLATE KEY	1	8*7*30mm
12.	0010014005	THRUST BEARING	1	51109
13.	1800065005	FIXING SEAT OF ELEVATING GEAR	1	
14.		CROSS HEAD SCREW	1	
15.		BEARING	1	6012
16.	1200032005	RIGHT SPIRAL BIG GEAR	1	(2552D)
	1200033005	RIGHT SPIRAL BIG GEAR	1	(2552DN)
17.		HEADLESS SCREW	1	M6*10L
18.		OUTER RING	1	
19.	2630049005	LOCKING NUT	1	

B: VERTICAL TRANSMITTING ASSEMBLY (2551D&2551DN)

NO.	PART NO.	DESCRIPTION	Q'TY	SPEC.
1.	1430033005	SUB SHAFT SLEEVE	1	
2.		BEARING	1	6205ZZ
3.		OUTER RING	1	C25
4.	1200034005	LEFT SPIRAL PINION	1	(2551D)
	1200035005	LEFT SPIRAL PINION	1	(2551DN)
5.		HEADLESS SCREW	1	M6*20L
6.	2410049005	WASHER	1	
7.		SOCK HEAD CAP SCREW	2	M8*22L
8.		HEADLESS SCREW	1	M6*20L
9.		SOCK HEAD CAP SCREW	1	M6*35L
10.		DOUBLE HEAD FLATE KEY	1	6*3.5*20L
11.	1030029005	DRIVING SHAFT	1	
12.		DOUBLE HEAD FLATE KEY	1	8*4*20L
13.		BEARING	1	6006ZZ
14.	1440002005	BEARING WASHER	1	
15.	1440001005	BEARING WASHER	1	
NO.	PART NO.	DESCRIPTION	Q'TY	SPEC.

16.		BEARING	1	6006ZZ
17.	2630001005	NUT	1	
18.	1430035005	BEARING NUTS	1	
19.		NUT	2	AN04
20.	1700007005	MOTOR FIXING PLATE	1	
21.		SOCK HEAD CAP SCREW	1	M6*12L
22.		BEARING		
23.	0010014005	BEARING SEAT		
24.		HEADLESS SCREW		
25.	4300004005	AC MOTOR	1	
26.		PLASTIC STEEL WIRE TOOTH-FORM BELT	1	T5*144T*25mm
27.		PLASTIC STEEL WIRE TOOTH-FORM BELT	1	T5*112T*18mm
28.		SOCK HEAD CAP SCREW	2	
29.	1210028005	DRIVER PULLEY	1	
30.	1700021005	MOTOR FIXED PLATE	1	
31.	1210031015	ELEVATING RAPID DRIVING PULLEY	1	
32.		WASHER	2	
33.		HEADLESS SCREW	2	M5*5L
34.		WASHER	4	φ 6
35.		SOCK HEAD CAP SCREW	4	M6*16L
36.		SOCK HEAD CAP SCREW	4	M8*25L
37.		SPRING WASHER	4	φ 8
38.		WASHER	4	φ 8
39.		SINGLE SHAFT STEPPING MOTOR	1	
40.		SOCK HEAD CAP SCREW	4	M6*16L
41.		WASHER	4	φ 6
42.		SOCK HEAD CAP SCREW	4	M6*25L
43.		SPRING WASHER	4	φ 6
44.		WASHER	4	φ 6
45.	1700013005	MOTOR FIXED PLATE	1	
46.	2490027005	WASHER	2	
47.	1210030005	ELEVATING RAPID DRIVING PULLEY	1	
48.		HEADLESS SCREW	2	M5*5L
49.	1020005005	FIXED PLATE SUPPORT	1	
50.	1810107005	ENCODER FIXED PLATE	1	
51.		WASHER	1	φ 8
52.		HEX HAND SCREW	1	M8*20L
53.		ENCODER	1	
54.		HEX HAND SCREW	1	M8*35L

LIFTING STRUCTURE



LIFTING STRUCTURE

EYE BOLT SET (2554)

NO.	PART NO.	DESCRIPTION	Q'TY	SPEC.
1.	2620009005	HANGING SCREW	4	
2.	2620010005	HANGING SCREW	1	

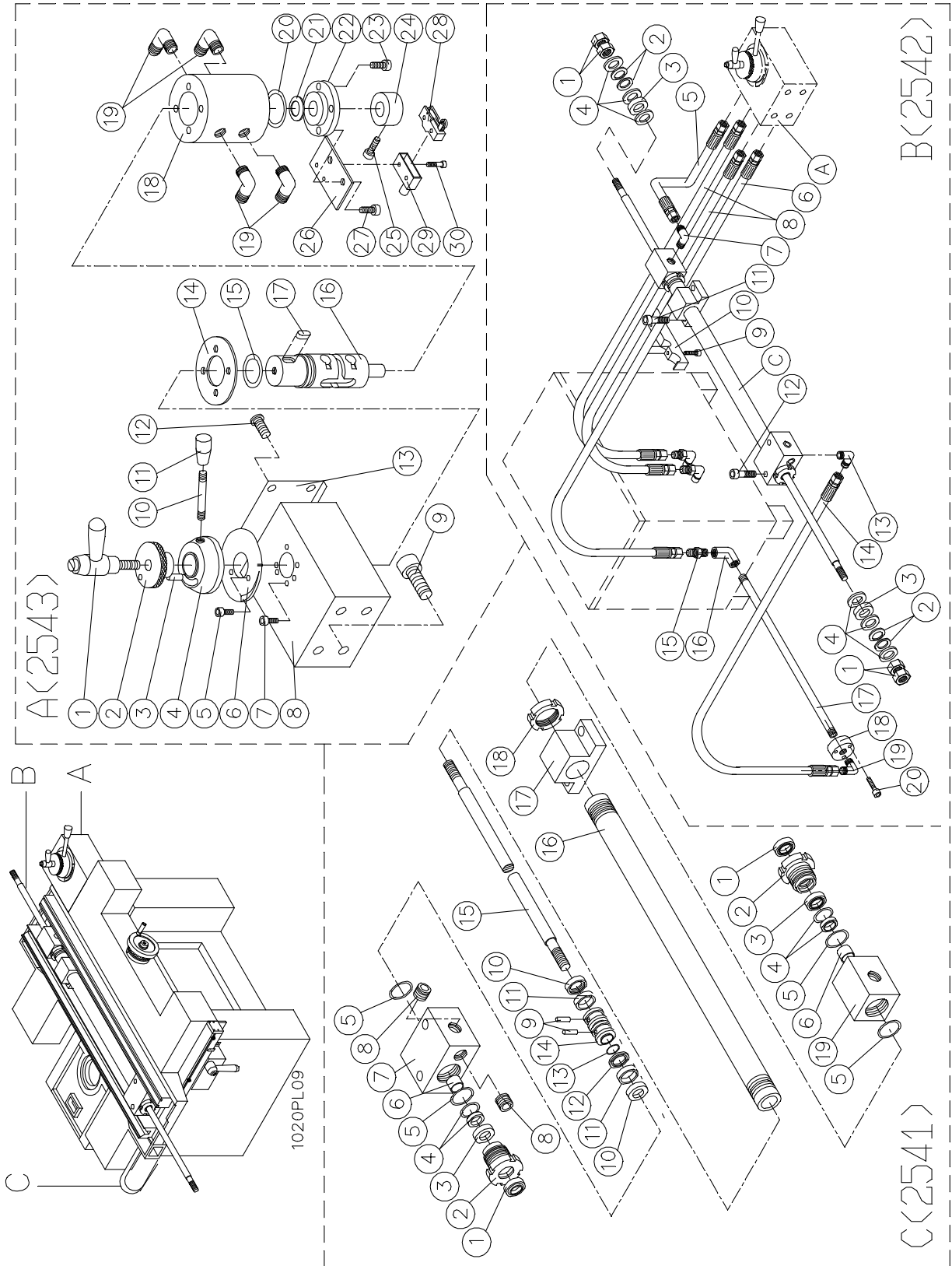
LEVELING SCREW SET (2555)

NO.	PART NO.	DESCRIPTION	Q'TY	SPEC.
3.	2410008005	CROSS HEAD SCREW	5	
4.		HEX NUT	5	M22
5.	2620027005	FLAT-REGULATING SCREW	5	M22*P2.5*105L

BASE ACCESSORY SET (2556B)

NO.	PART NO.	DESCRIPTION	Q'TY	SPEC.
6.	2000079005	BASE FRONT SEALED COVER	1	
7.		SOCKET SCREW	4	M8*10L
8.	2000102005	BASE REAR SEALED SCREW	1	
9.		SOCKET SCREW	4	M6*10L
10.	1910039005	PROTECT COVER	1	
11.		SOCKET SCREW	3	M6*10L
12.	2000147005	COLUMN SIDE PLATE	1	
13.		SOCKET SCREW	3	M5*10L
14.	2400012005	BASE OIL PLATE	1	
15.	2400013005	BASE OIL PLATE	1	
16.		HEADLESS SCREW	2	M6*20L

LONGITUDINAL HYDRAULIC SYSTEM (254C/1020)



LONGITUDINAL HYDRAULIC SYSTEM (254C/1020)

A: LONGITUDINAL THROTTLING VALVE (2543)

NO.	PART NO.	DESCRIPTION	Q'TY	SPEC.
1.		FIXED HANDLE	1	M6
2.	2490007015	FLOW CONTROL KNOB	1	
3.		PIN	1	D8*50L
4.	1720002015	FLOW SWITCH	1	
5.		SOCKET SCREW	2	M6*10L
6.	3080037005	THROTTLING VALVE PANEL	1	
7.		SOCKET SCREW	4	M6*20L
8.	1820005005	THROTTLING VALVE SEAT	1	
9.		SOCKET SCREW	4	M8*20L
10.	4210013015	THROTTLING HANDLE BAR	1	
11.	4210011005	THROTTLING HANDLE HEAD	1	
12.		CROSS HEAD SCREW	4	M5*8L
13.	2000107005	THROTTLING SEAT REAR COVER	1	
14.	2000082005	UPPER COVER PLATE OF THROTTLING SEAT	1	
15.		O-RING	1	P42
16.	2830002005	THROTTLING VALVE SHAFT	1	
17.		DOUBLE HEAD FLAT KEY	1	6*6*10L
18.	2820002005	THROTTLING VALVE BODY	1	
19.		HIGH PRESSURE PIPE 90° CONNECTION	4	1/2PT*1/2PH
20.		O-RING	1	P48
21.		DISC WASHER	1	φ 14.3
22.	2020006005	THROTTLING VALVE REAR COVER	1	
23.		SOCKET SCREW	2	M5*15L
24.	2420117005	CROSSWISE SETTING BLOCK	1	
25.		SOCKET SCREW	1	M6*15L
26.	1810058005	SAFETY SWITCH SEAT	1	
27.		SOCKET SCREW	2	M5*15L
28.		SAFETY SWITCH	1	Z15GW2B
29.		LIMIT SWITCH COVER	1	CB-1
30.		SOCKET SCREW	2	M4*25L

B: HYDRAULIC PIPING (2542/1020)

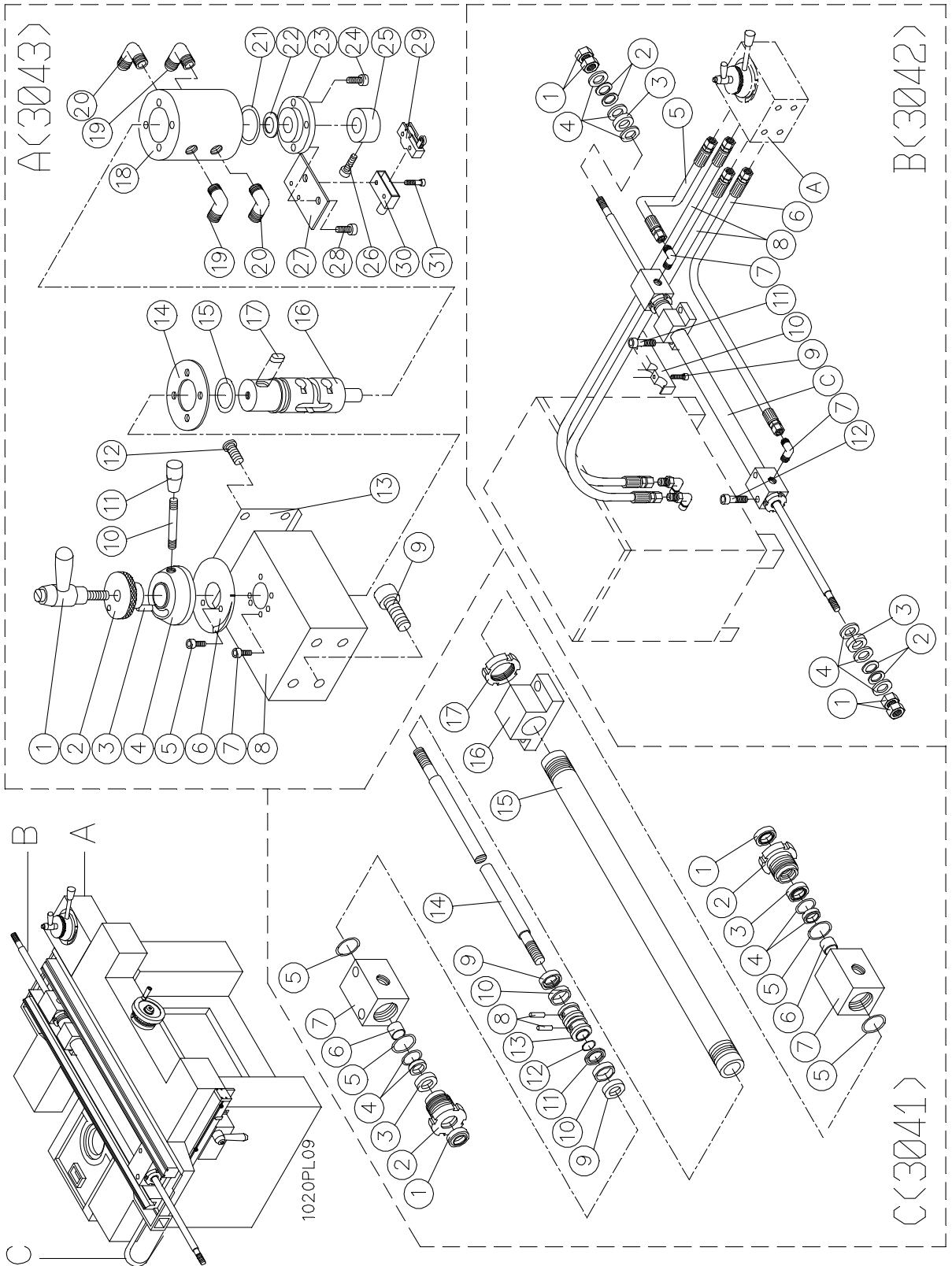
NO.	PART NO.	DESCRIPTION	Q'TY	SPEC.
1.		HEX SOCKET NUT	4	M16
2.		DISC WASHER	4	D16*D32*1.5T
3.	2410036005	RECOIL CUSHION	2	
4.	2410034005	WASHER	6	
5.		HIGH PRESSURE PIPE	1	1/2PH*460L
6.		HIGH PRESSURE PIPE	1	1/2PH*1610L
7.		HIGH PRESSURE PIPE 90° CONNECTION	1	3/8PT*1/2PH
8.		HIGH PRESSURE PIPE	2	1/2PH*1610L
9.		SOCKET SCREW	2	M6*30L

NO.	PART NO.	DESCRIPTION	Q'TY	SPEC.
10.	0640011005	FIXED OIL PIPE SOCKET	1	
11.		SOCKET SCREW	2	M8*35L
12.		SOCKET SCREW	2	M8*65L
13.		HIGH PRESSURE PIPE 90°CONNECTION	1	3/8PT*3/8PH*40L
14.		HIGH PRESSURE PIPE	1	3/8PH*1460L
15.		HIGH PRESSURE PIPE CONNECTION	1	1/2PH*1/2PT
16.		PIPE ELBOW	1	1/2PT*1/2PT
17.		OIL PIPE	1	
18.	2420021005	HIGH PRESSURE PIPE CONNECTION BOARD	1	
19.		HIGH PRESSURE PIPE 90°CONNECTION	1	1/2PT*3/8PH
20.		SOCKET SCREW	3	M6*30L

C: LONGITUDINAL HYDRAULIC CYLINDER SET (2541/1020)

NO.	PART NO.	DESCRIPTION	Q'TY	SPEC.
1.		DUST RING	2	DU18
2.	1830023005	OIL SEAL SEAT	2	
3.		OIL SEAL	2	UHS 18
4.		OIL SEAL	2	GSW 18
5.		O-RING	4	P-38
6.		LUBRICATING BEARING	2	DU18*10L
7.	2910012005	LEFT HYDRAULIC CYLINDER TOP HEAD	1	
8.		HOLE PLUG	2	1/2"PT
9.		TAPER PIN	2	#5*25L
10.		ANTI-COLLISION SLEEVE	2	
11.		ANTI-COLLISION RING	2	WRS-8
12.		OIL SEAL	1	GSP-32
13.		O-RING	1	P18
14.	2920006015	PISTON	1	
15.	2790006005	PISTON ROD	1	
16.	2800005005	HYDRAULIC PIPE	1	
17.	1800021005	FIXING RING OF HYDRAULIC CYLINDER	1	
18.	2630040005	LOCK NUT	1	AN08
19.	2910014005	RIGHT HYDRAULIC CYLINDER TOP HEAD	1	

LONGITUDINAL HYDRAULIC SYSTEM (304C/1224)



LONGITUDINAL HYDRAULIC SYSTEM (304C/1224)**A: LONGITUDINAL THROTTLING VALVE (3043)**

NO.	PART NO.	DESCRIPTION	Q'TY	SPEC.
1.		FIXED HANDLE	1	M6
2.	2490007015	FLOW CONTROL KNOB	1	
3.		PIN	1	D8*50L
4.	1720002015	FLOW SWITCH	1	
5.		SOCKET SCREW	2	M6*10L
6.	3080037005	THROTTLING VALVE PANEL	1	
7.		SOCKET SCREW	4	M6*20L
8.	1820005005	THROTTLING VALVE SEAT	1	
9.		SOCKET SCREW	4	M8*20L
10.	4210013015	THROTTLING HANDLE BAR	1	
11.	4210011005	THROTTLING HANDLE HEAD	1	
12.		CROSS HEAD SCREW	4	M5*8L
13.	2000107005	THROTTLING SEAT REAR COVER	1	
14.	2000082005	UPPERCOVERPLATEOFTHROTTLINGSEAT	1	
15.		O-RING	1	P42
16.	2830002005	THROTTLING VALVE SHAFT	1	
17.		DOUBLE HEAD FLAT KEY	1	6*6*10L
18.	2820002005	THROTTLING VALVE BODY	1	
19.		HIGH PRESSURE PIPE 90°CONNECTION	4	1/2PT*1/2PH
20.		HIGH PRESSURE PIPE 90°CONNECTION	4	1/2PT*3/4PH
21.		O-RING	1	P48
22.		DISC WASHER	1	D14
23.	2020006005	THROTTLING VALVE REAR COVER	1	
24.		SOCKET SCREW	2	M5*15L
25.	2420117005	CROSSWISE SETTING BLOCK	1	
26.		SOCKET SCREW	1	M6*15L
27.	1810058005	SAFETY SWITCH SEAT	1	
28.		SOCKET SCREW	2	M5*15L
29.		SAFETY SWITCH	1	Z15GW2B
30.		SAFETY SWITCH COVER	1	CB-1
31.		SOCKET SCREW	2	M4*25L

B: HYDRAULIC PIPING (3042)

NO.	PART NO.	DESCRIPTION	Q'TY	SPEC.
1.		HEX SOCKET NUT	4	M16
2.		DISC WASHER	4	D16*D32*1.5T
3.	2410036005	RECOIL CUSHION	2	
4.	2410034005	WASHER	6	
5.		HIGH PRESSURE PIPE	1	1/2PH*460L
6.		HIGH PRESSURE PIPE	2	1/2PH*1610L
7.		HIGH PRESSURE PIPE 90°CONNECTION	2	3/8PT*1/2PH
8.		HIGH PRESSURE PIPE	1	1/2PH*1250L

NO.	PART NO.	DESCRIPTION	Q'TY	SPEC.
9.		SOCKET SCREW	2	M6*35L
10.	0640011005	HIGH PRESSURE PIPE CONNECTION	1	
11.		SOCKET SCREW	2	M8*35L
12.		CROSS HEAD SCREW	2	M8*65L

C: LONGITUDINAL HYDRAULIC CYLINDER SET (3041/1224)

NO.	PART NO.	DESCRIPTION	Q'TY	SPEC.
1.		DUST RING	2	DU18
2.	1830023005	OIL SEAL SEAT	2	
3.		OIL SEAL	2	UHS 18
4.		OIL SEAL	2	GSW 18
5.		O-RING	4	P-38
6.		LUBRICATING BEARING	2	DU18*10L
7.	2910012005	LEFT HYDRAULIC CYLINDER TOP HEAD	2	
8.		TAPER PIN	2	#5*25L
9.		WEAR RING	2	
10.		OIL SEAL	2	WRS-8
11.		OIL SEAL	1	GSP-32
12.		O-RING	1	P18
13.	2920006015	PISTON	1	
14.	2790009005	PISTON ROD	1	
15.	2800007005	HYDRAULIC CYLINDER TUBE		
16.	1800021005	HYDRAULIC FIXED RING	1	
17.		LOCK NUT	1	AN08

TABLE REVERSING MECHANISM (3661)

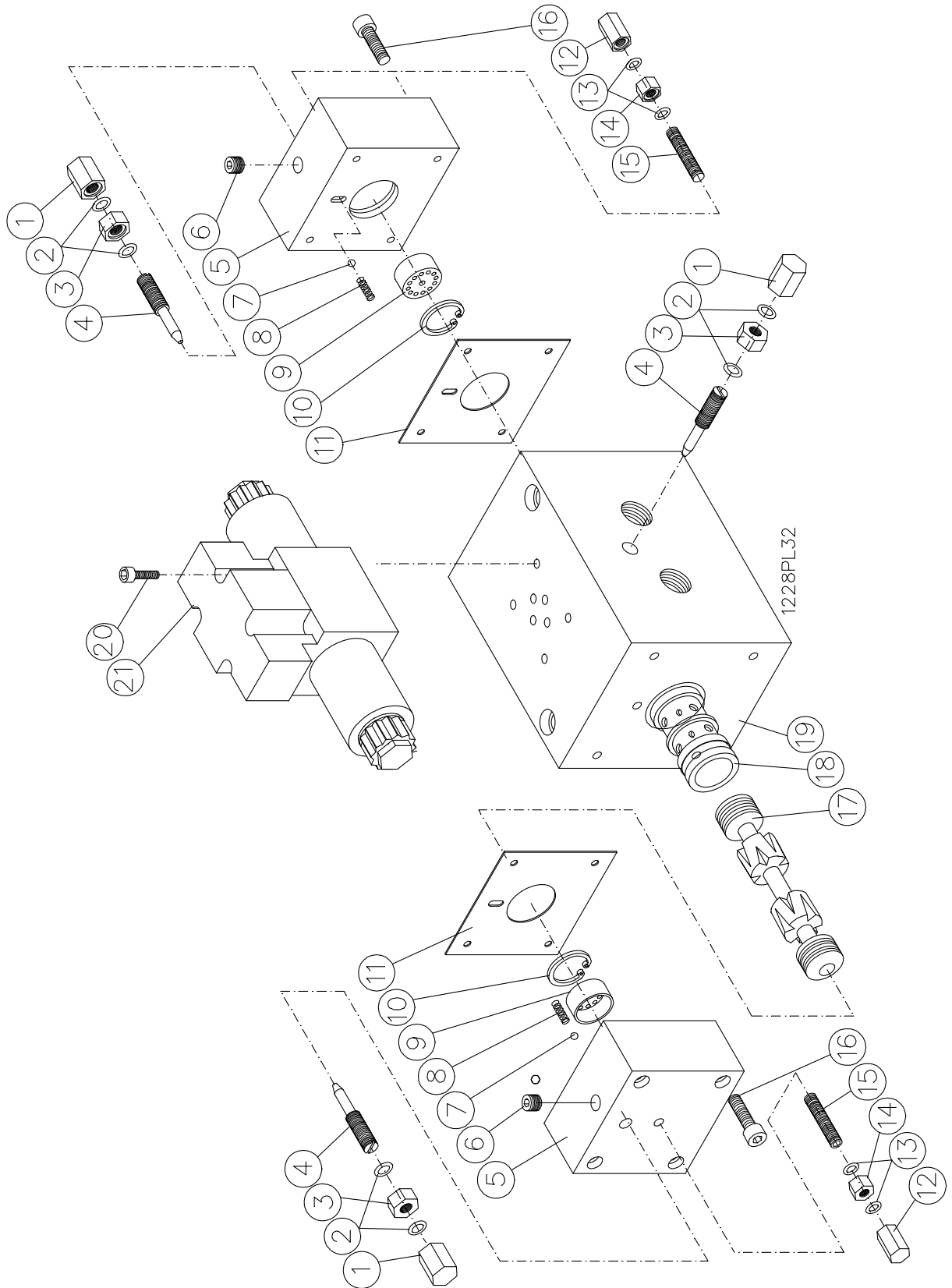
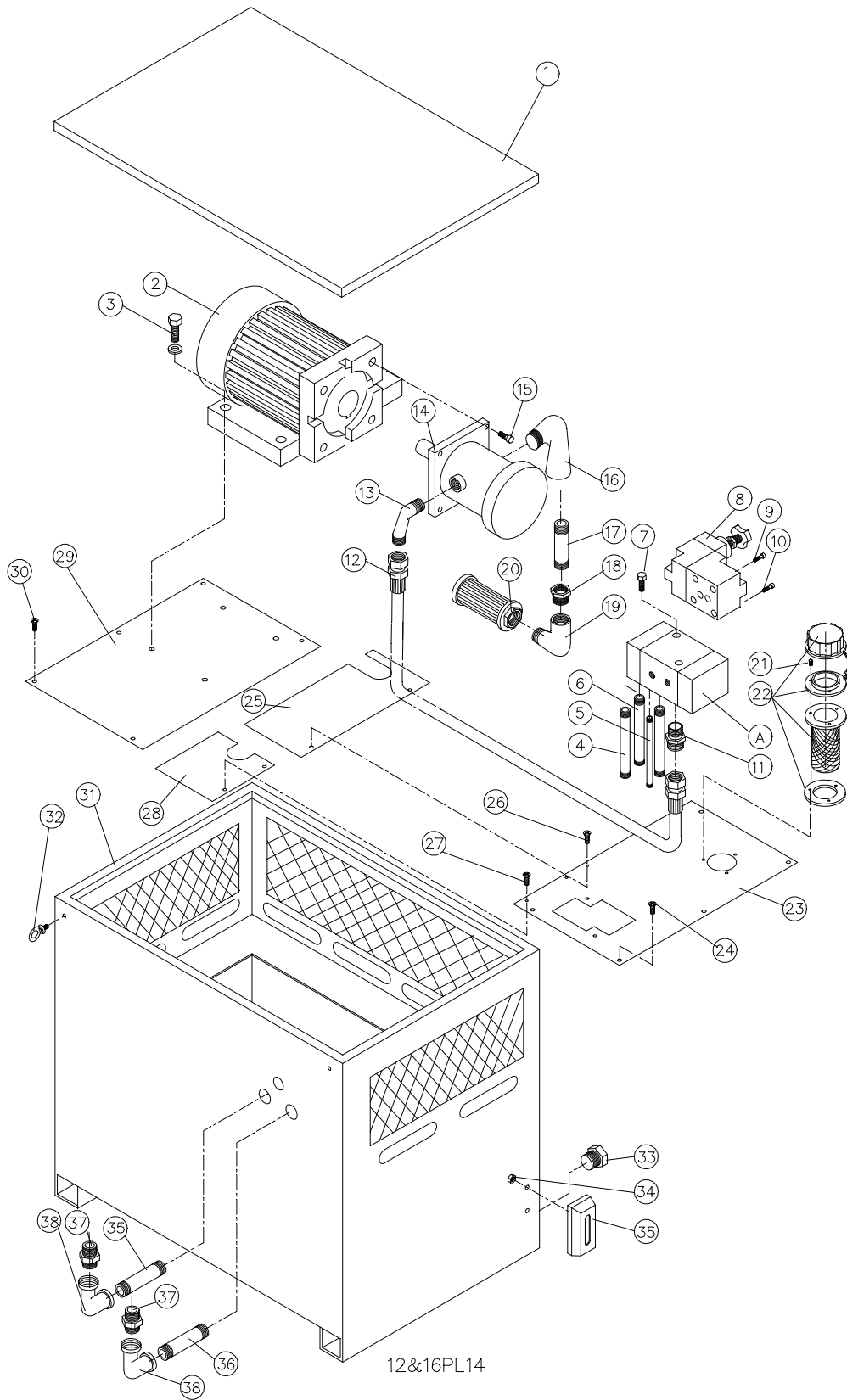


TABLE REVERSING MECHANISM (3661)

NO.	PART NO.	DESCRIPTION	Q'TY	SPEC.
1.	2640011005	LEAK-PROOF NUT	3	
2.		O-RING	6	P10
3.	2630013005	FIXING NUT	3	
4.	2830003005	SMALL THROTTLING SHAFT	3	
5.	2010004005	SIDE COVER OF REVERSING BODY	2	
6.		HOLE PLUG	2	1/8PT
7.		STEEL BALL	2	ϕ 5
8.	2700008005	SPRING	2	
9.	2890014005	TOP BLOCK OF REVERSING SHAFT	2	
10.		INNER RETAINING RING	2	ϕ 28
11.		ASBESTOS GASKET	1	95*90*1
12.	2640012005	LEAK-PROOF NUT	2	
13.		O-RING	4	P8
14.	2630016005	FIXING NUT	2	
15.		HEADLESS SCREW	2	M8*40L
16.		SOCK HEAD CAP SCREW	8	M6*45L
17.	1030067005	REVERSING SHAFT	1	
18.	1430047005	REVERSING SHAFT SLEEVE	1	
19.	2820003005	REVERSING SHAFT BODY	1	
20.		SOCK HEAD CAP SCREW	4	M5*45L
21.		SOLENOID VALVE	1	DV24V

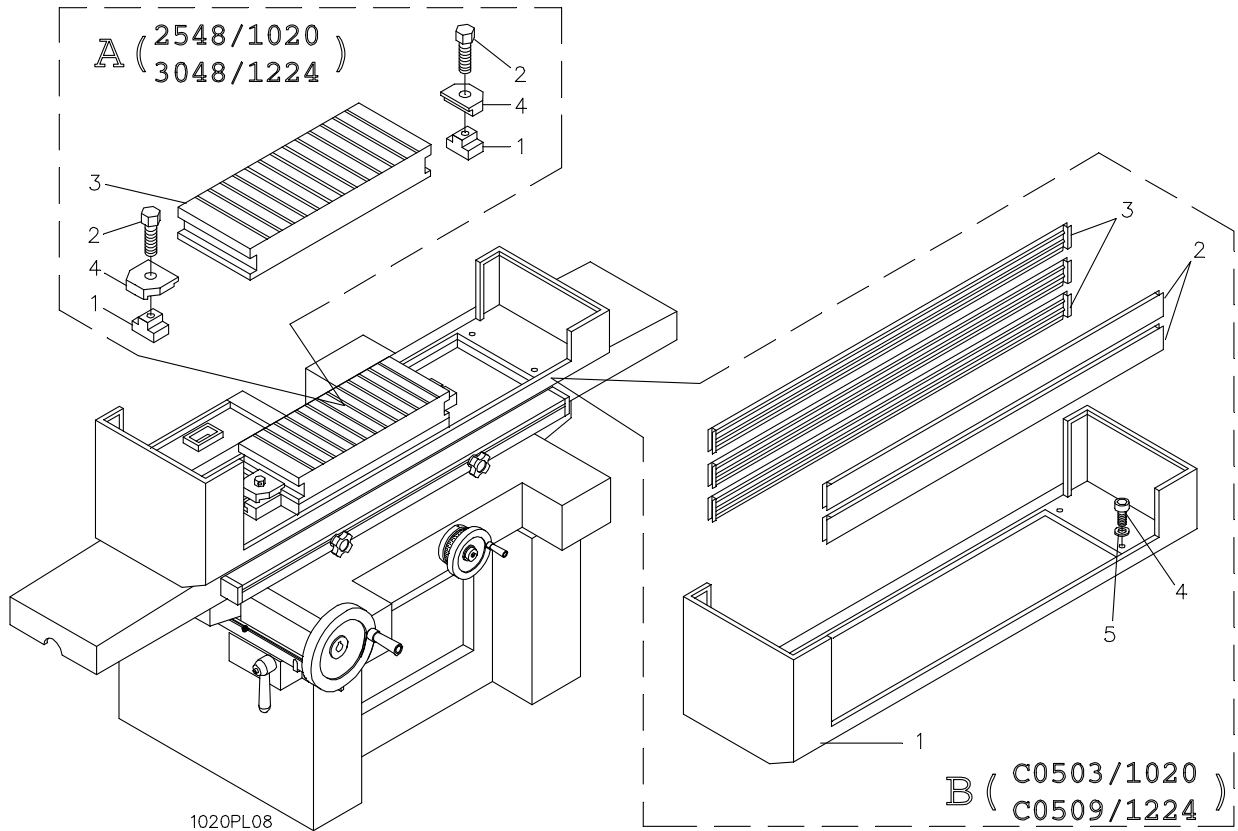
HYDRAULIC TANK SYSTEM (256)



HYDRAULIC TANK SYSTEM (256)

NO.	PART NO.	DESCRIPTION	Q'TY	SPEC.
1.	1910068005	UPPER PROTECTION COVER OF OIL TANK	1	
2.		HYDRAULIC MOTOR	1	2HP6P
3.		HEX SOCKET SCREW	4	M10*20L
4.		STRAIGHT CONNECTION PIPE	1	1/2PT*6'L
5.		STRAIGHT CONNECTION PIPE	1	1/8PT*6'L
6.		STRAIGHT CONNECTION PIPE	2	3/8PT*6'L
7.		SOCK HEAD CAP SCREW	2	M8x110L
8.		PRESSURE-REGULATING VALVE	1	1/2"
9.		SOCK HEAD CAP SCREW	2	M16*90L
10.		SOCK HEAD CAP SCREW	2	M16x70L
11.		PIPE ELBOW	1	3/4"PTx3/4"PH
12.		HIGH PRESSURE PIPE	1	3/4"*570L
13.		HIGH PRESSURE PIPE CONNECTION	1	3/4"PT*3/4"PH
14.		HYDRAULIC PUMP	1	30CC/
15.		SOCK HEAD CAP SCREW	4	M10*30L
16.		PIPE ELBOW	1	1PT
17.		STRAIGHT CONNECTION PIPE	1	1"PTx5'L
18.		TRANSFER CONNECTION	1	1PTx1.5PT
19.		PIPE ELBOW	1	1.5"PT
20.		OIL FILTER	1	1.5" PT
21.		CROSS HEAD SCREW	3	3/16"W*0.5"L
22.		OIL-FEEDING FILTER	1	50
23.	2420030005	DIRECTIONAL VALVE FIXED PLATE	1	
24.		SOCK HEAD CAP SCREW	4	M6x15L
25.	2000108005	OIL TANK SUB-COER	1	
26.		CROSS HEAD SCREW	2	M6x15L
27.		CROSS HEAD SCREW	2	M6x15L
28.	2000110005	OIL TANK SUB-COVER B	1	
29.	1810069005	FIXING PLATE	1	
30.		CROSS HEAD SCREW	5	M6x15L
31.	3230002015	OIL TANK	1	
32.		HANGING RING	4	5/16"W
33.		HOLE PLUG	2	1/2PT
34.		NUT	2	
35.		OIL LEVER GAME	1	3"
36.		STRAIGHT PIPE CONNECTION	2	1/2"PT*3.5"L
37.		HIGH PRESSURE PIPE CONNECTION	2	1/2"PT*3/4"PH
38.		PIPE ELBOW	2	1/2"PT

CHUCK & SPLASH GUARD



CHUCK & SPLASH GUARD

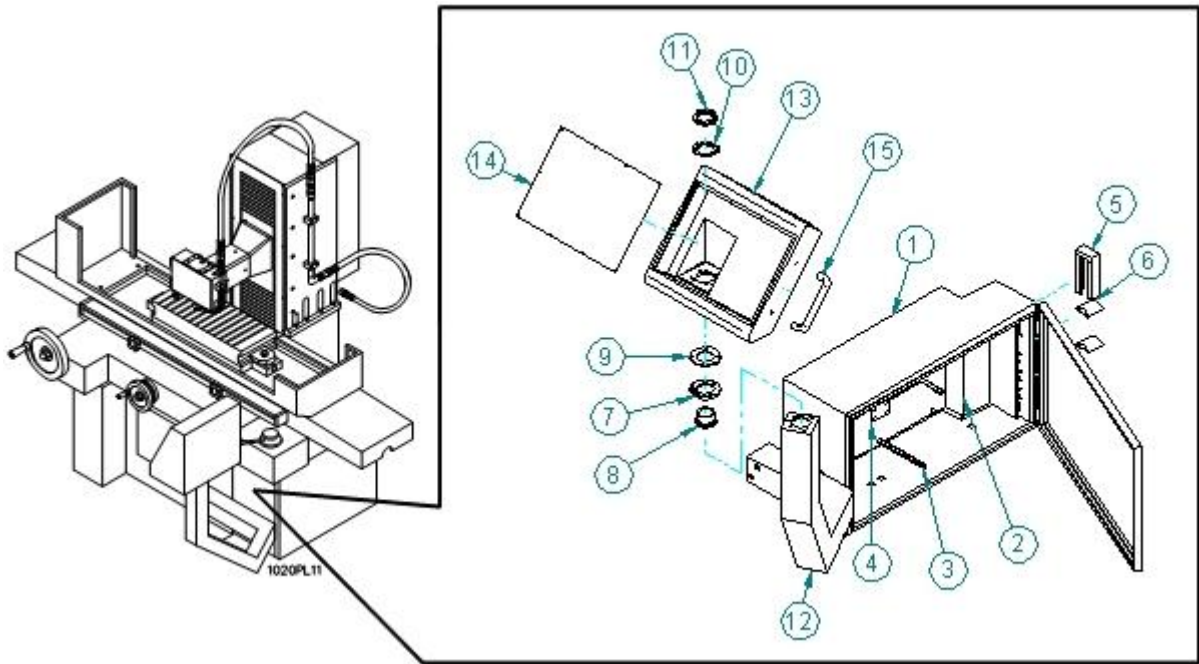
A: CHUCK (2548/1020,3048/1224) OPTIONAL

NO.	PART NO.	DESCRIPTION	Q'TY	SPEC.
1.	2630046005	T-NUT	2	
2.		HEXAGON HEAD SCREW	2	M12*55L
3.		CHUCK(250*500MM)	1	2548
3.		CHUCK(300*600MM)	1	3048
4.		CHUCK FIXING BLOCK	2	

B: SPLASH GUARD (C0503/1020,C0509/1224) OPTIONAL

NO.	PART NO.	DESCRIPTION	Q'TY	SPEC.
1.	3520104005	SPLASH GUARD	1	C0503
1.	3520016005	SPLASH GUARD	1	C0509
2.	2350006005	FRONT WATER-PROOF MOVABLE PLATE	2	C0503
2.	2350011005	FRONT WATER-PROOF MOVABLE PLATE	2	C0509
3.	2350008005	WATER PROOF MOVABLE PLATE	3	C0503
3.	2350013005	WATER PROOF MOVABLE PLATE	3	C0509
4.		SOCK HEAD CAP SCREW	4	M8*20L
5.		WASHER	4	D8

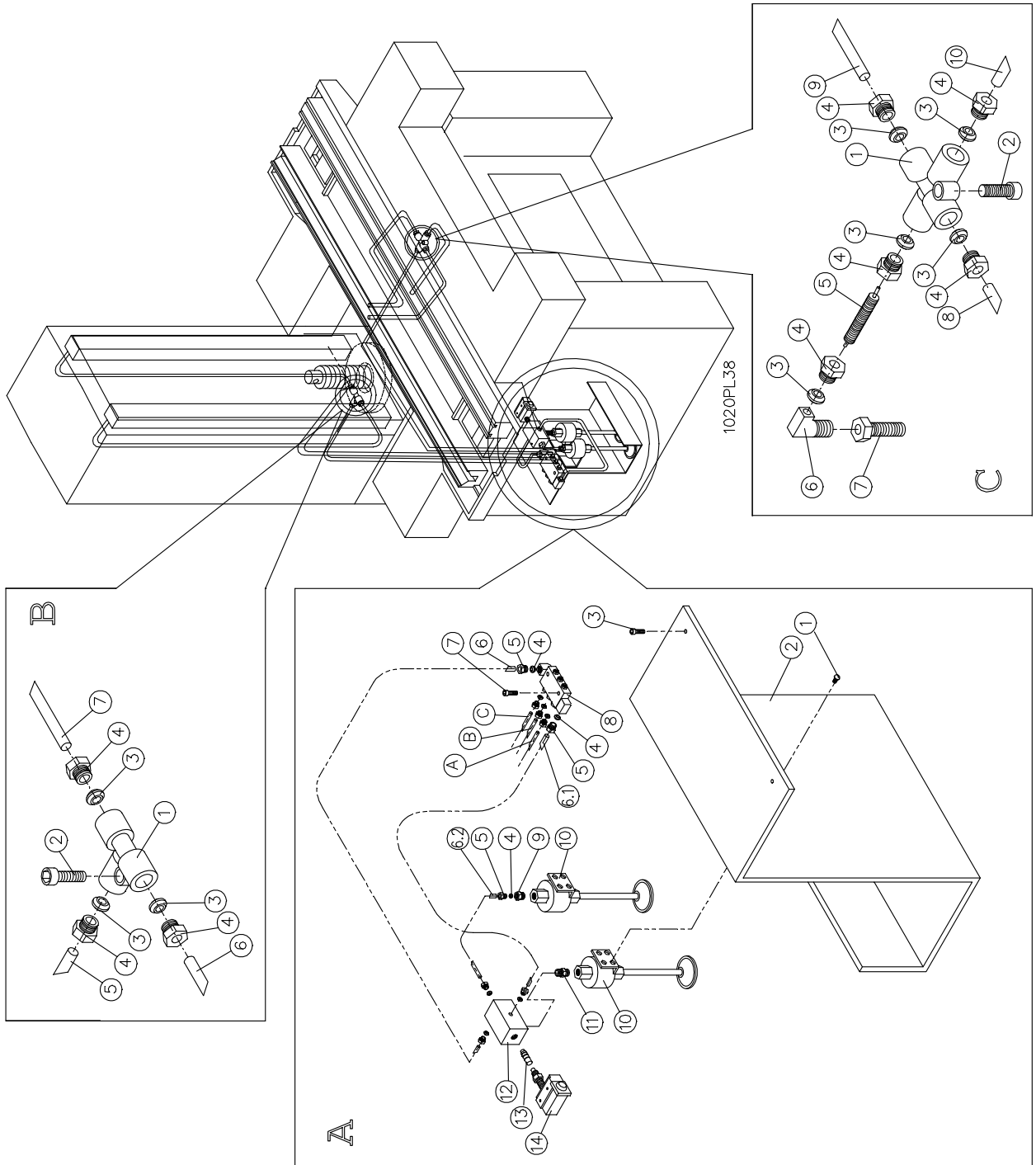
ELECTRICAL AND CONTROL BOX



ELECTRICAL AND CONTROL BOX

NO.	PART NO.	DESCRIPTION	Q'TY	SPEC.
1.	3000012005	ELECTRICAL BOX	1	
2.	3030067005	SPLASH COVER	1	
3.	1440034005	SEPARATION POLE IN ELECTRICAL PLATE	1	
4.	2410060005	CUSHION PAD IN COVER	1	
5.	3520070005	WATER PROOF COVER IN WIRING JUNCTION	1	
6.	3520011005	WATER PROOF COVER IN ELECTRICAL PLATE	1	
7.	0640044005	CROSS AXIS CLAMP	1	
8.	3130011005	CROSS AXIS IN CONTROL BOX	1	
9.	2420035005	FIXED PLATE IN CROSS AXIS	1	
10.	A18BA0AW12	LOCKED WASHER	1	AW12
11.	A12000AN12	LOCKED NUT	1	AN12
12.	3090005015	ARM	1	
13.	3050075035	ELECTRICAL BOX	1	
14.		PD CONTROL PANEL	1	
15.	J091UAGS20	HANDLE	1	

LUBRICATION SYSTEM (258)



LUBRICATION SYSTEM (258)
A:

NO.	PART NO.	DESCRIPTION	Q'TY	SPEC.
1.		SOCK HEAD CAP SCREW	2	M6x10L
2.	1820023005	PUMP FIXED STAND	1	
3.		SOCK HEAD CAP SCREW	2	M6x10L
4.		COMPRESSION SLEEVE	3	PB-6
5.		COMPRESSION BUSHING	3	PA-6
6.		ALUMINIUM TUBING	1	φ 6
6.1.		ALUMINIUM TUBING	1	φ 6
6.2.		ALUMINIUM TUBING	1	φ 6
7.		SOCK HEAD CAP SCREW	2	M4x20L
8.		AB TYPE OIL REGULATING MANIFOLD	1	
9.		STRAIGHT ADAPTER	1	PD601
10.		PUMP	2	
11.		NIPPLES	1	1/8PT
12.	1730001005	SENSOR FIXED SUPPORT	1	
13.	2250071005	SENSOR SLIDING STEM	1	
14.		SENSOR	1	TZ-7310
A.		LUBRIATED FOR VERTICAL SLIDEWAY	1	
B.		LUBRIATED FOR VERTICAL SCREW & GEAR	1	
C.		LUBRIATED FOR TABLE & SADDLE SLIDEWAY	1	

B:

NO.	PART NO.	DESCRIPTION	Q'TY	SPEC.
1.		JUNCTION 3-WAY	1	PKD-4
2.		SOCK HEAD CAP SCREW	1	M5x20L
3.		COMPRESSION SLEEVE	3	PB-4
4.		COMPRESSION BUSHING	3	PA-4
5.		ALUMINIUM TUBING	1	φ 4
6.		ALUMINIUM TUBING	1	φ 4
7.		ALUMINIUM TUBING	1	φ 4

C:

NO.	PART NO.	DESCRIPTION	Q'TY	SPEC.
1.		JUNCTION 4-WAY	1	PJD-4
2.		SOCK HEAD CAP SCREW	1	M5x20L
3.		COMPRESSION SLEEVE	5	PB-4
4.		COMPRESSION BUSHING	5	PA-4
5.		HOSE ASSEMBLY	1	φ 4x400L
6.		ELBOW CONNECTOR 90°	1	PH-202
7.		FIXED JOINT BOLT	1	PM-104-1
8.		ALUMINIUM TUBING	1	φ 4

NO.	PART NO.	DESCRIPTION	Q'TY	SPEC.
9.		ALUMINIUM TUBING	1	ϕ 4
10.		ALUMINIUM TUBING	1	ϕ 4