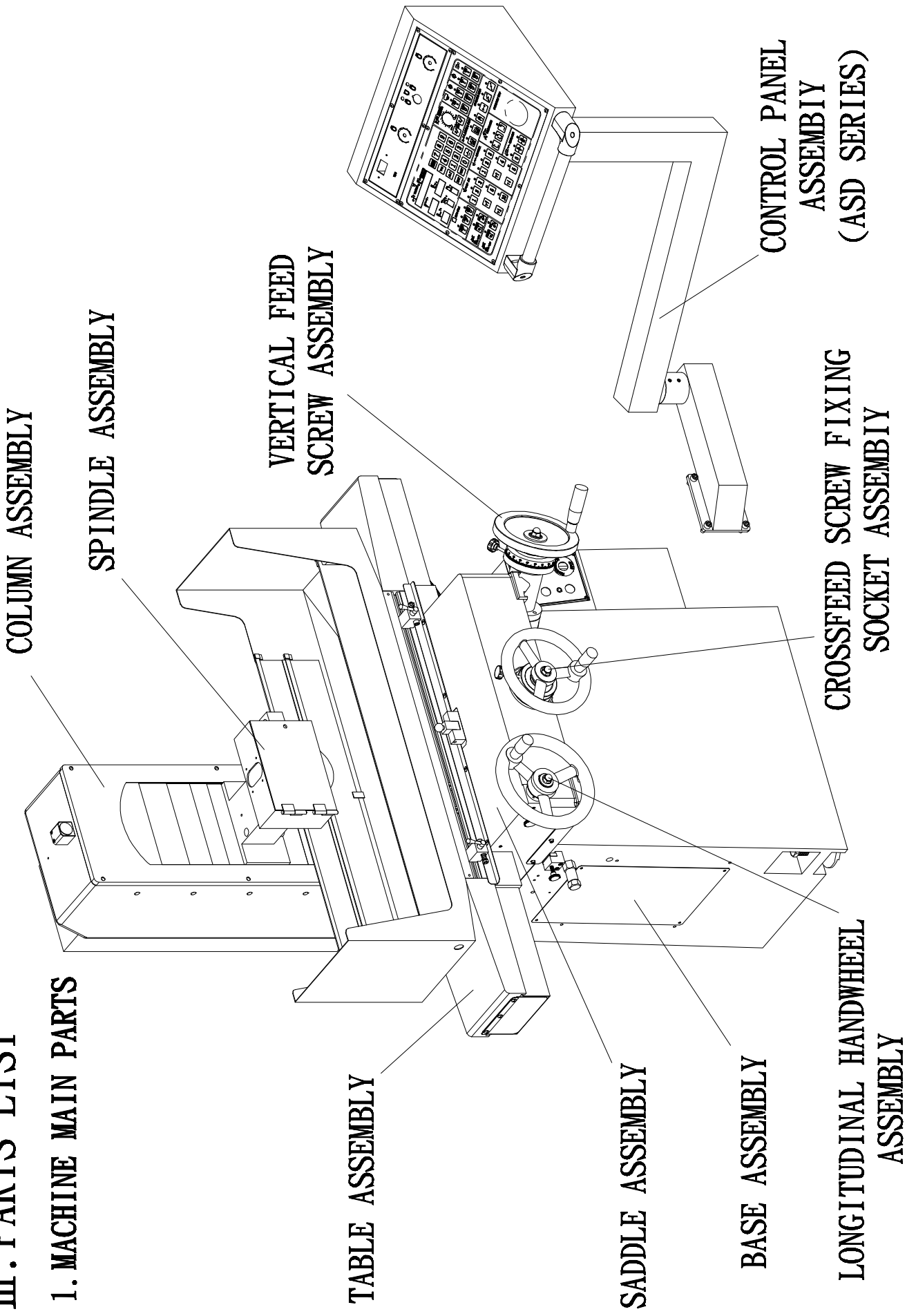
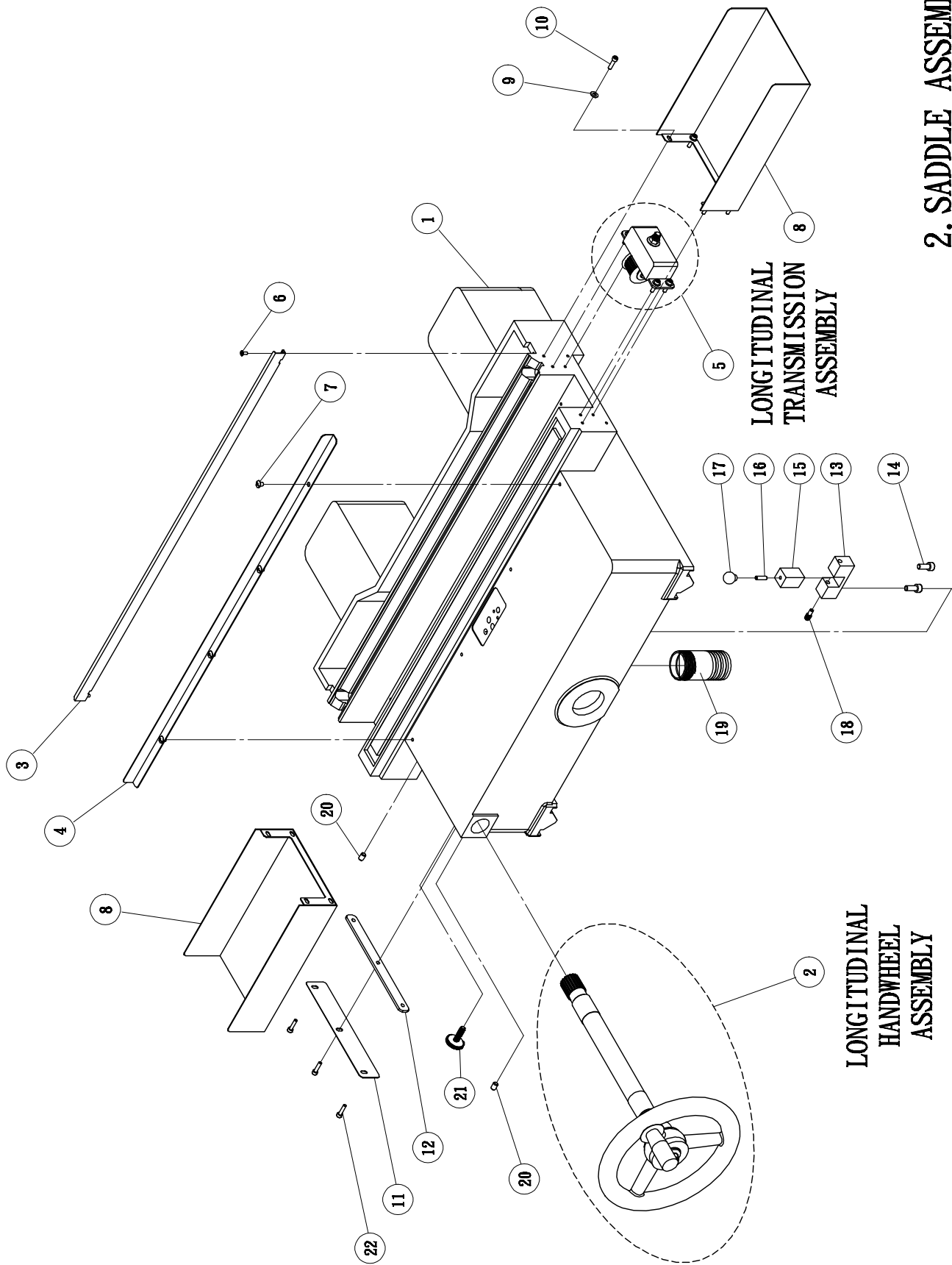


### III. PARTS LIST

#### 1. MACHINE MAIN PARTS



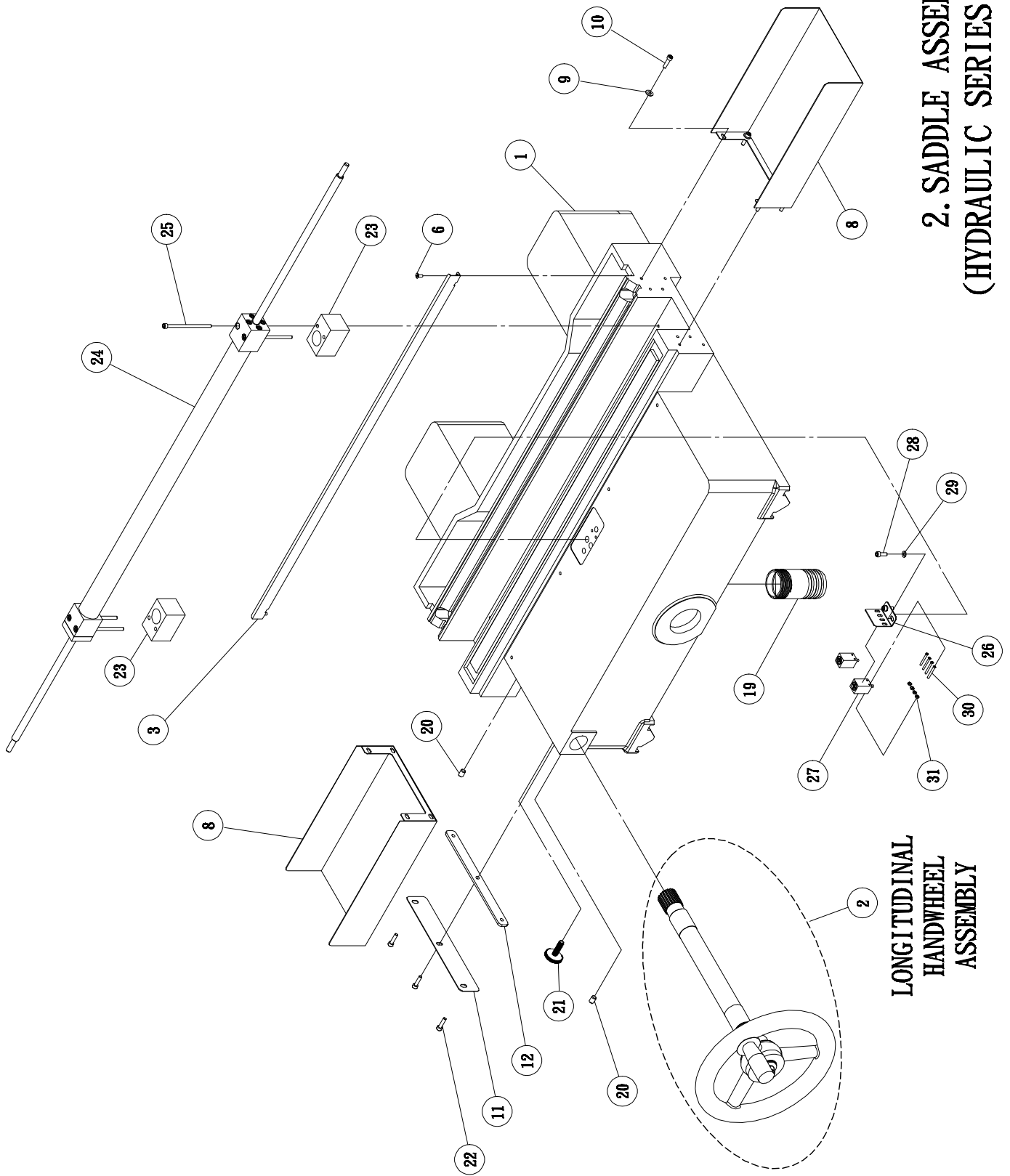


**2. SADDLE ASSEMBLY  
(BELT TYPE)**

## SADDLE ASSEMBLY(BELT TYPE)

NO.	DRAWING NO. /SPEC.	DESCRIPTION	Q/TY	NOTE
1	618-01-010A	Saddle	1	
2		Longitudinal Handwheel Assembly	1set	
3	NB618-06-12	Dust proof bar(Rear)	1	
4	NB618-06-11	Dust proof bar(Front)	1	
5		Longitudinal Transmission Assembly	1set	
6	M4x0.7Px8L	Flat head screw	2	
7	M6x1.0Px8L	Cross round head screw	4	
8	NB618-06-07	Dust proof plate	2	
9	6.5x13x1	Washer	4	
10	M5x0.8Px20L	Inner hexagonal screw	7	
11	618-01-027	Crossfeed locking bar (Outer)	1	
12	618-01-028	Crossfeed locking bar (Inner)	1	
13	618-01-024	Longitudinal travel fixing seat	1	
14	M8x1.25Px20L	Inner hexagonal screw	2	
15	618-01-022	Longitudinal travel fixing block	1	
16	M6x20L	Inner hexagonal headless screw	1	
17	618-01-021	Plastic round ball	1	
18	618-01-025	Pin	1	
19	618-01-026	Pipe	1	
20	M5x12L	Inner hexagonal headless screw	2	
21	618-01-011	Handwheel handle	1	
22	M5x0.8Px20L	Inner hexagonal screw	3	

**2. SADDLE ASSEMBLY  
(HYDRAULIC SERIES 1A~ASD)**

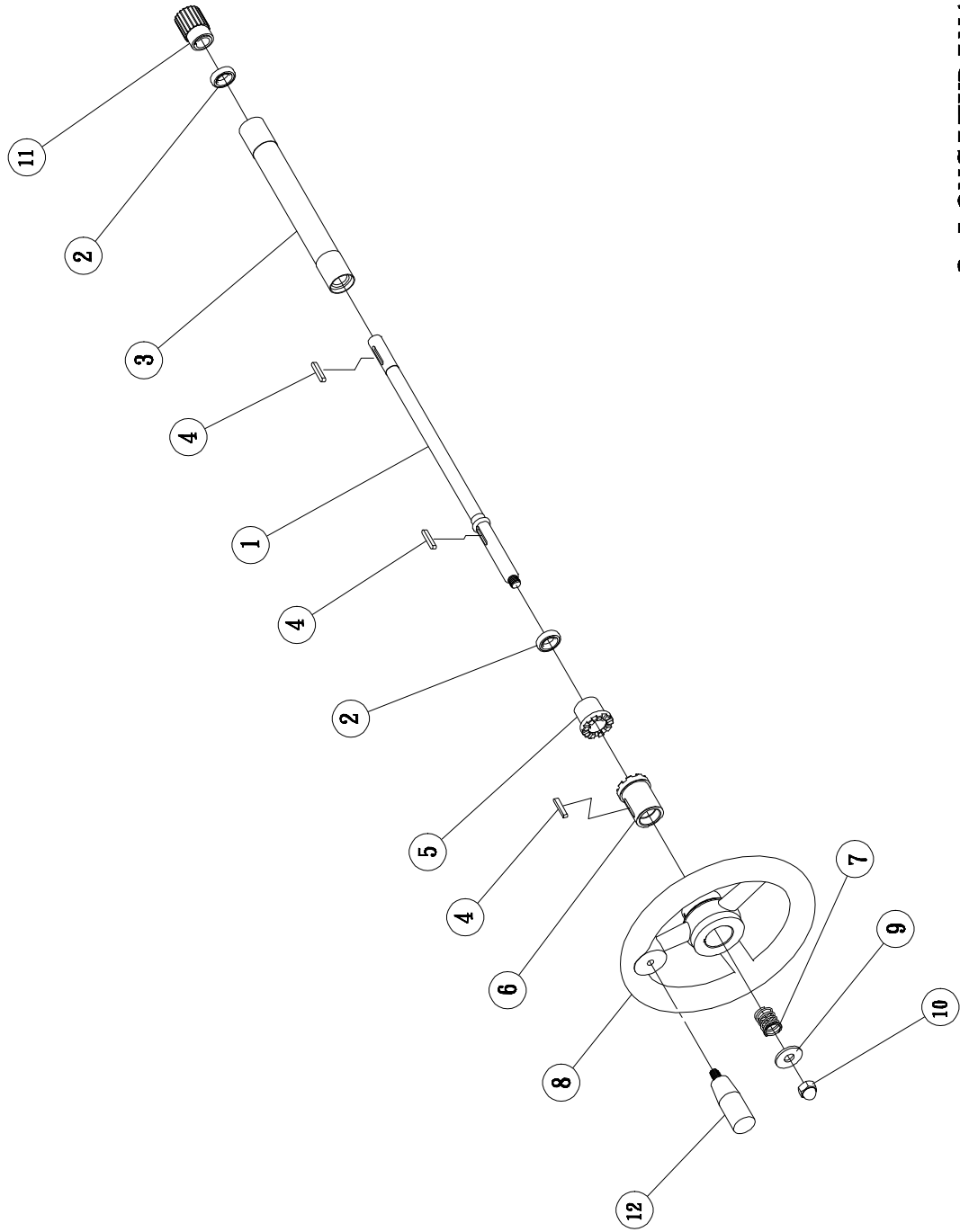


**LONGITUDINAL  
HANDWHEEL  
ASSEMBLY**



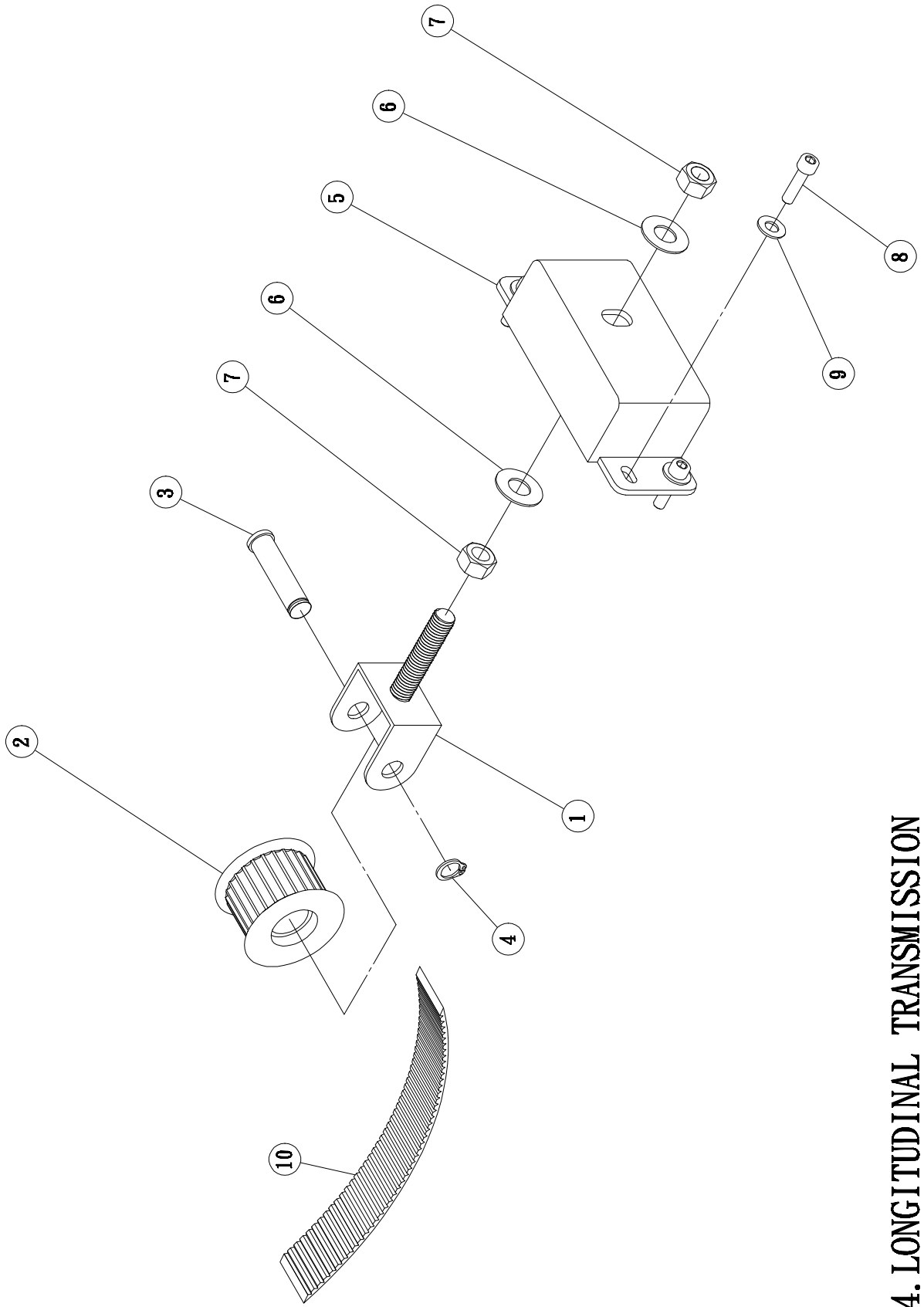
## SADDLE ASSEMBLY(HYDRAULIC SERIES 1A~ASD)

NO.	DRAWING NO. /SPEC.	DESCRIPTION	Q/TY	NOTE
1	618-01-010A	Saddle	1	
2		Longitudinal Handwheel Assembly	1set	
3	NB618-06-12	Dust proof bar(Rear)	1	
6	M4x0.7Px8L	Flat head screw	2	
8	NB618-06-07	Dust proof plate	2	
9	6.5x13x1	Washer	4	
10	M5x0.8Px20L	Inner hexagonal screw	7	
11	618-01-027	Crossfeed locking bar (Outer)	1	
12	618-01-028	Crossfeed locking bar (Inner)	1	
19	618-01-026	Pipe	1	
20	M5x12L	Inner hexagonal headless screw	2	
21	618-01-011	Handwheel handle	1	
22	M5x0.8Px20L	Inner hexagonal screw	3	
23	618401100	Cylinder fixing block	2	
24	R1-25x560A	Cylinder set	1	
25	M5x0.8Px90L	Inner hexagonal screw	4	
26	618-01-047	Switch fixing seat	1	
27	TL-B5NE1	Longitudinal proximity switch	2	
28	M5x0.8Px15L	Inner hexagonal screw	2	
29	5x10x1	Washer	2	
30	M3x0.5Px25L	Cross round head screw	4	
31	M3x0.5Px6Wx2.5H	Nut	4	



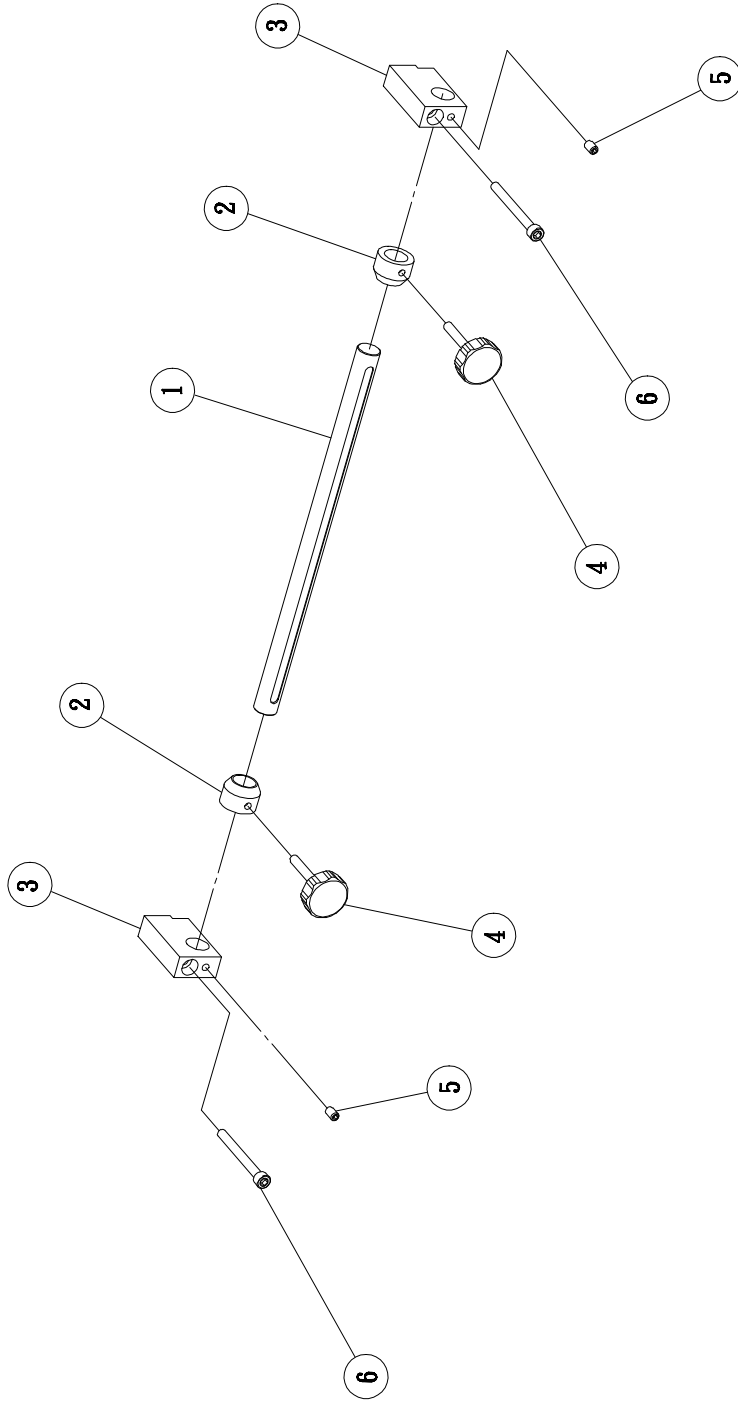
### 3. LONGITUDINAL HANDWHEEL ASSEMBLY





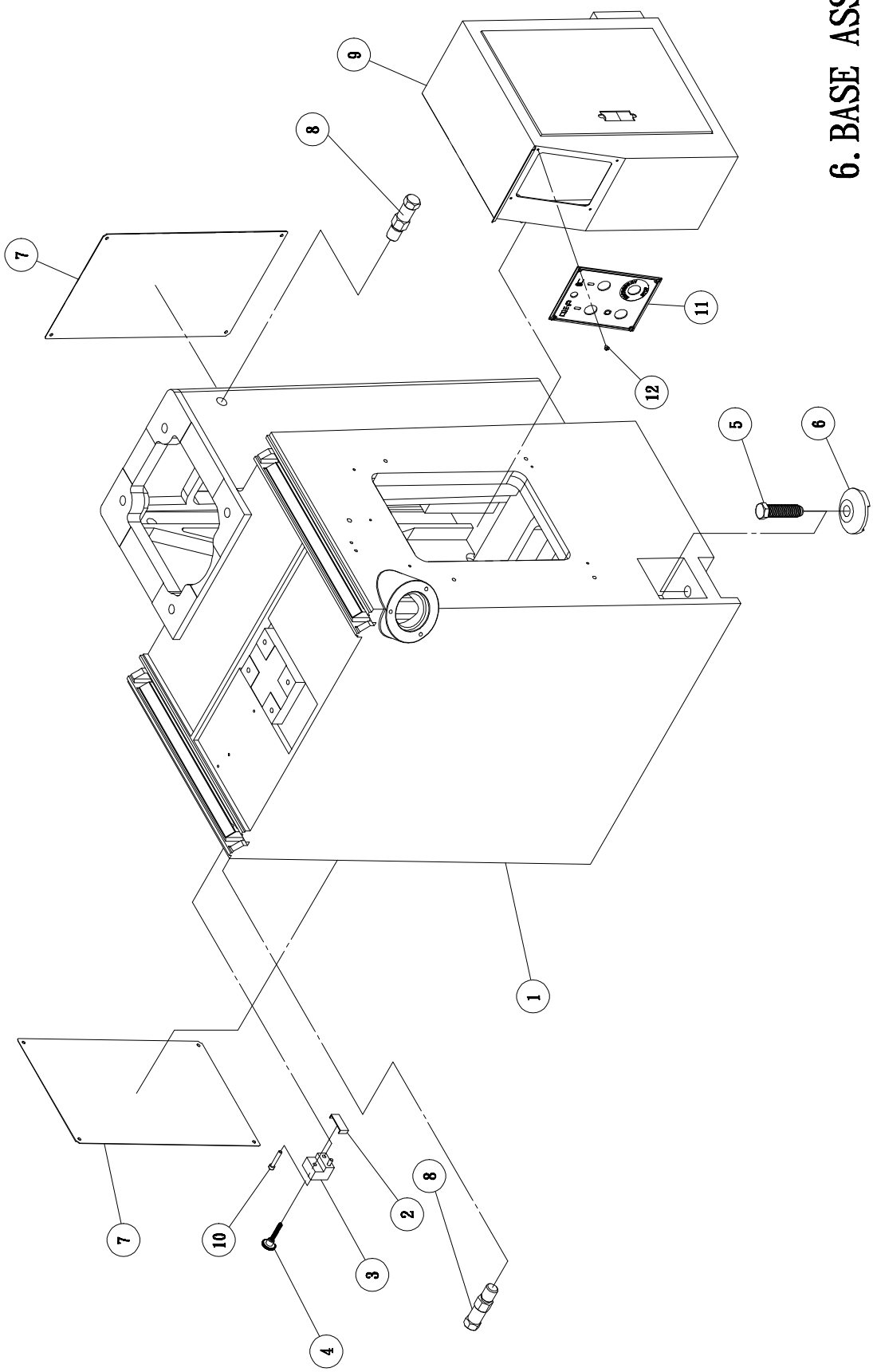
**4. LONGITUDINAL TRANSMISSION  
ASSEMBLY**





**5. CROSSFEED MICRO ADJUSTMENT ASSEMBLY  
(HYDRAULIC SERIES 1A~ASD)**

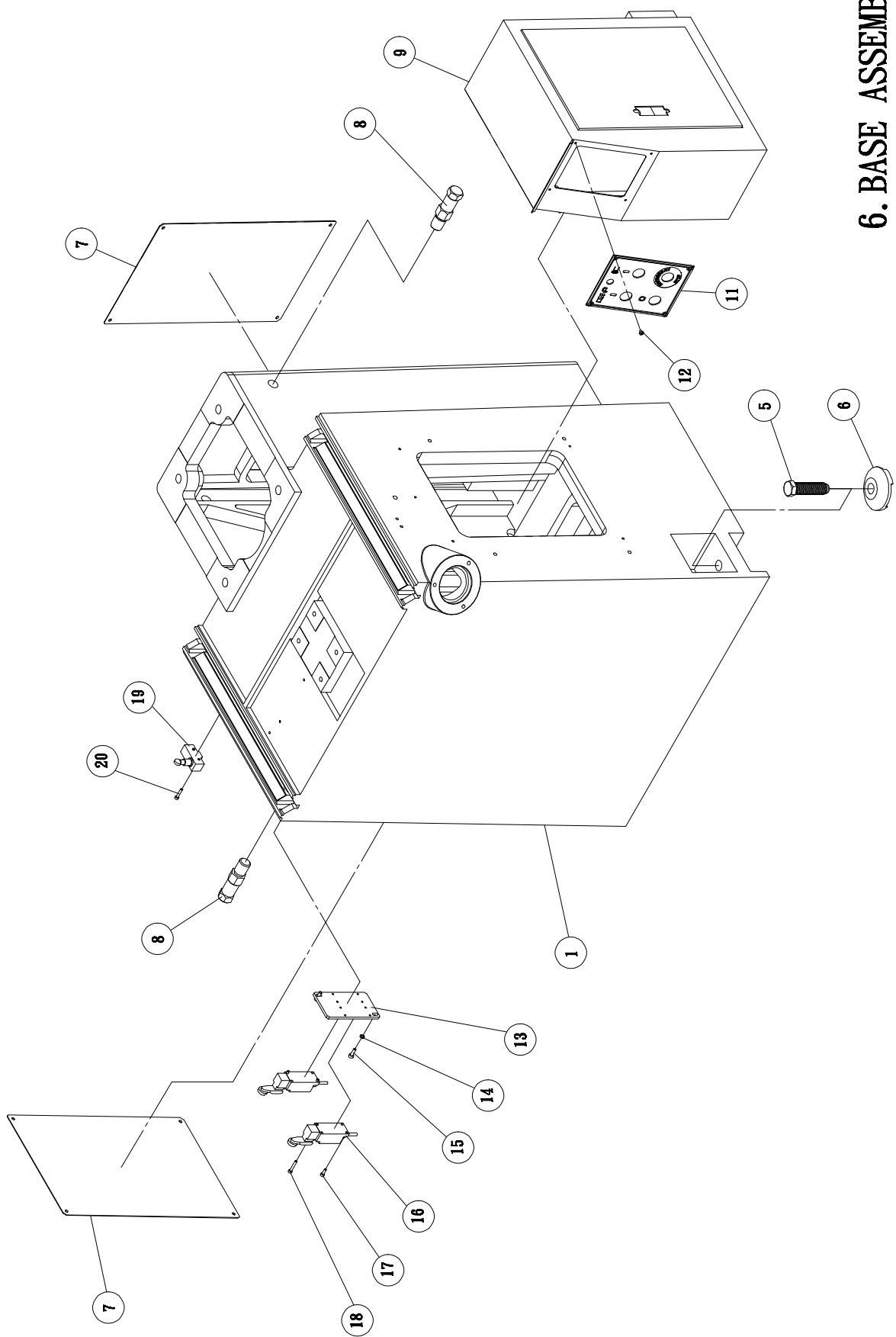




**6. BASE ASSEMBLY**

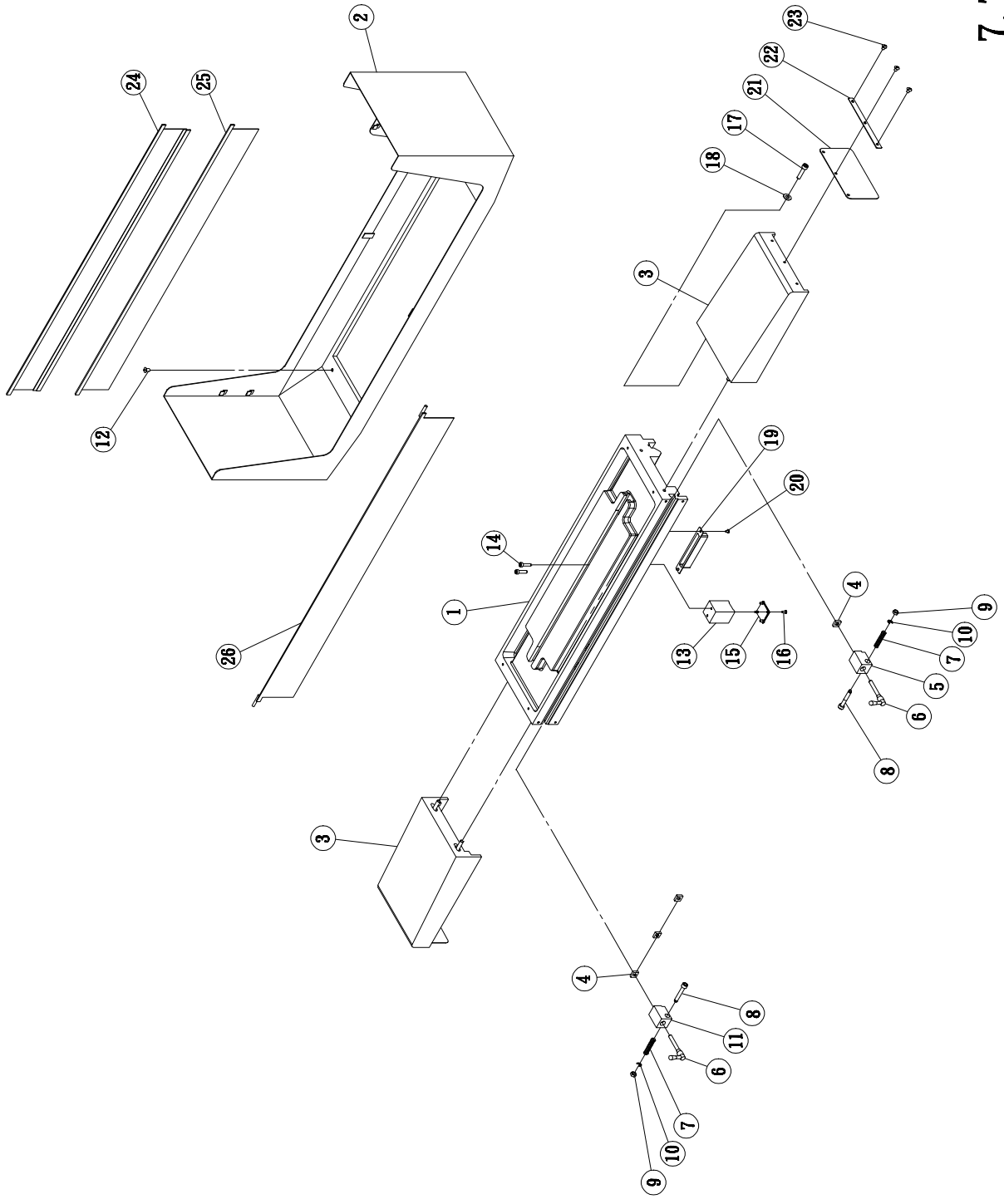






**6. BASE ASSEMBLY  
(HYDRAULIC SERIES 1A~ASD)**

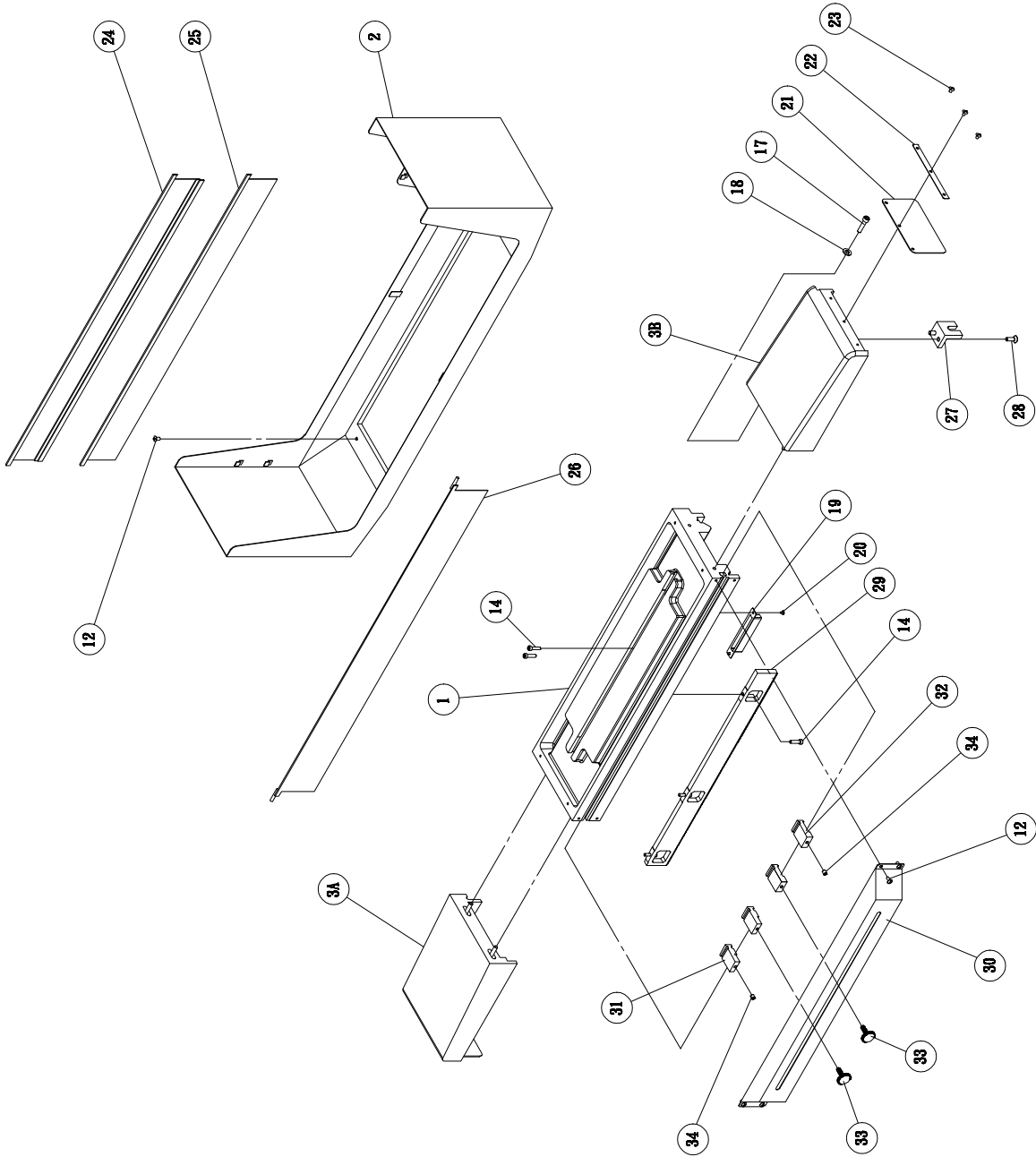




7. TABLE ASSEMBLY

## TABLE ASSEMBLY

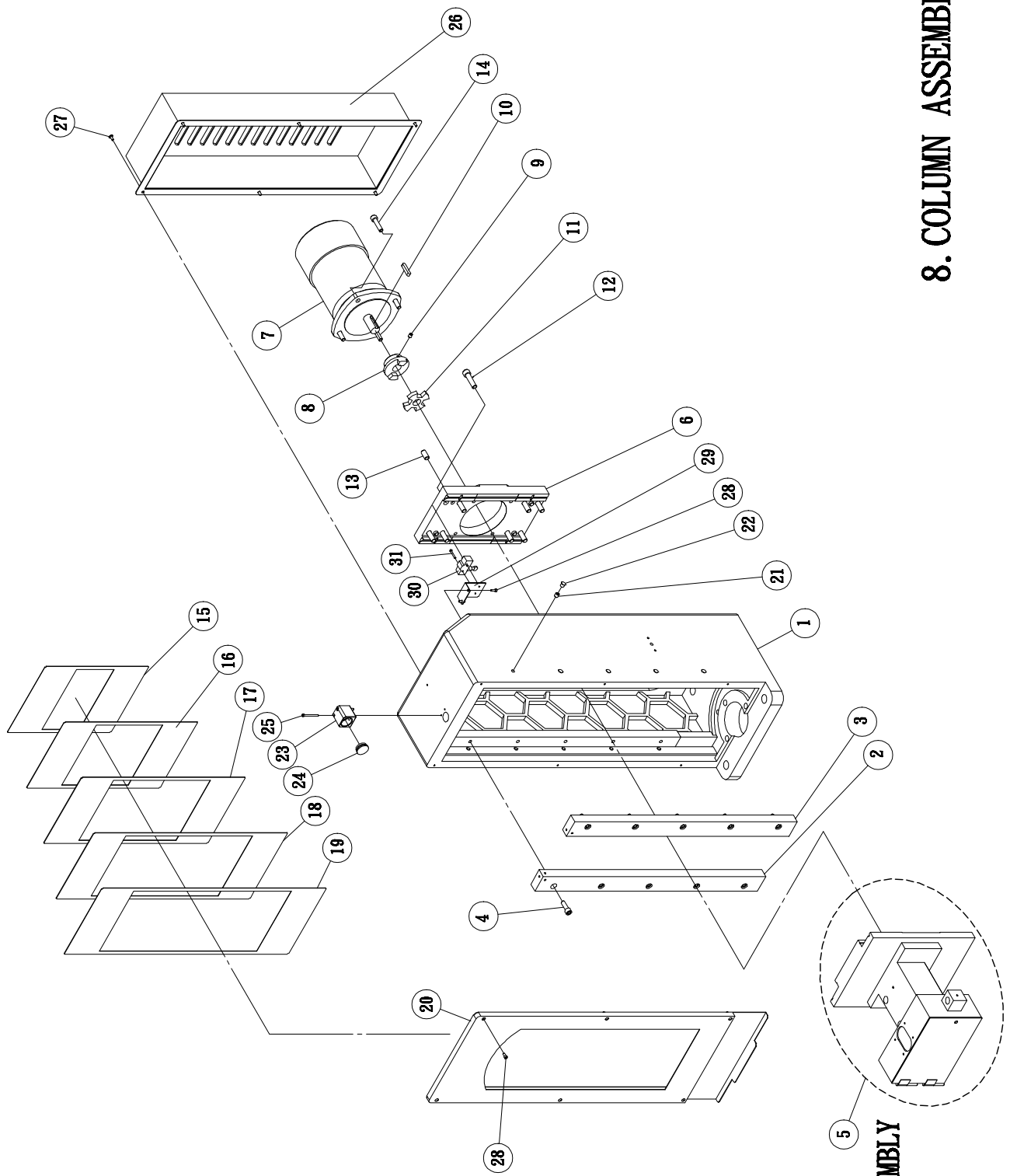
NO.	DRAWING NO. /SPEC.	DESCRIPTION	Q/TY	NOTE
1	618-01-003A	Table	1	
2	618-01-001	Splash Guard	1	
3	NB618-06-019	Table wing	2	
4	618302600	Fixing nut	4	
5	618-01-020	Longitudinal travel adjusting block (Left)	1	
6	618-01-052	Adjusting knob	2	
7	618-06-018	Spring	2	
8	618-01-019	Fixing shaft	2	
9	M8x1.25Px12Wx6H	Nut	2	
10	∅6	Ring	2	
11	618-01-020A	Longitudinal travel adjusting block (Right)	1	
12	M6x1.0Px12L	Cross head screw	4	
13	06183009V0	Timing belt seat	1	
14	M6x1.0Px25L	Inner hexagonal screw	2	
15	NB618-06-010	Timing belt fixing board	1	
16	M4x0.7Px8L	Flat head screw	4	
17	M8x1.25Px35L	Inner hexagonal screw	4	
18	10x20x2L	Washer	4	
19	MPG-01-032	Coolant guiding block	1	
20	M4x0.7Px6L	Cross round head screw	2	
21	NB618-06-018	Rubber plate	2	
22	NB618-06-017	Fixing bar	2	
23	M6x1.0Px8L	Cross round head screw	6	
24	618-01-002A	Coolant guarding board A (Rear)	1	
25	618-01-002B	Coolant guarding board B (Rear)	1	
26	618-01-002C	Coolant guarding board C (Front)	1	



**7. TABLE ASSEMBLY  
(HYDRAULIC SERIES 1A~ASD)**

## TABLE ASSEMBLY

NO.	DRAWING NO. /SPEC.	DESCRIPTION	Q/TY	NOTE
1	618-01-003A	Table	1	
2	618-01-001	Splash Guard	1	
3A	0618302100	Table wing (L)	1	
3B	0618302200	Table wing (R)	1	
12	M6x1.0Px12L	Cross head screw	8	
14	M6x1.0Px25L	Inner hexagonal screw	5	
17	M8x1.25Px35L	Inner hexagonal screw	4	
18	10x20x2	Washer	4	
19	MPG-01-032	Coolant guiding block	1	
20	M4x0.7Px6L	Cross round head screw	2	
21	NB618-06-018	Rubber plate	2	
22	NB618-06-017	Fixing bar	2	
23	M6x1.0Px8L	Cross round head screw	6	
24	618-01-002A	Coolant guarding board A (Rear)	1	
25	618-01-002B	Coolant guarding board B (Rear)	1	
26	618-01-002C	Coolant guarding board C (Front)	1	
27	06183035M0	Cylinder rack	2	
28	M8x1.25Px20L	Flat head inner hexagonal screw	4	
29	618-01-033	Gear bar	1	
30	618-01-035A	Longitudinal travel adjustor cover (Hydraulic)	1	
31	618-01-034	Sensor block (L)	2	
32	618-01-034A	Sensor block (R)	2	
33	618-01-011	Fixing knob	2	
34	M8-10L	Inner hexagonal headless screw	2	



**SPINDLE ASSEMBLY**

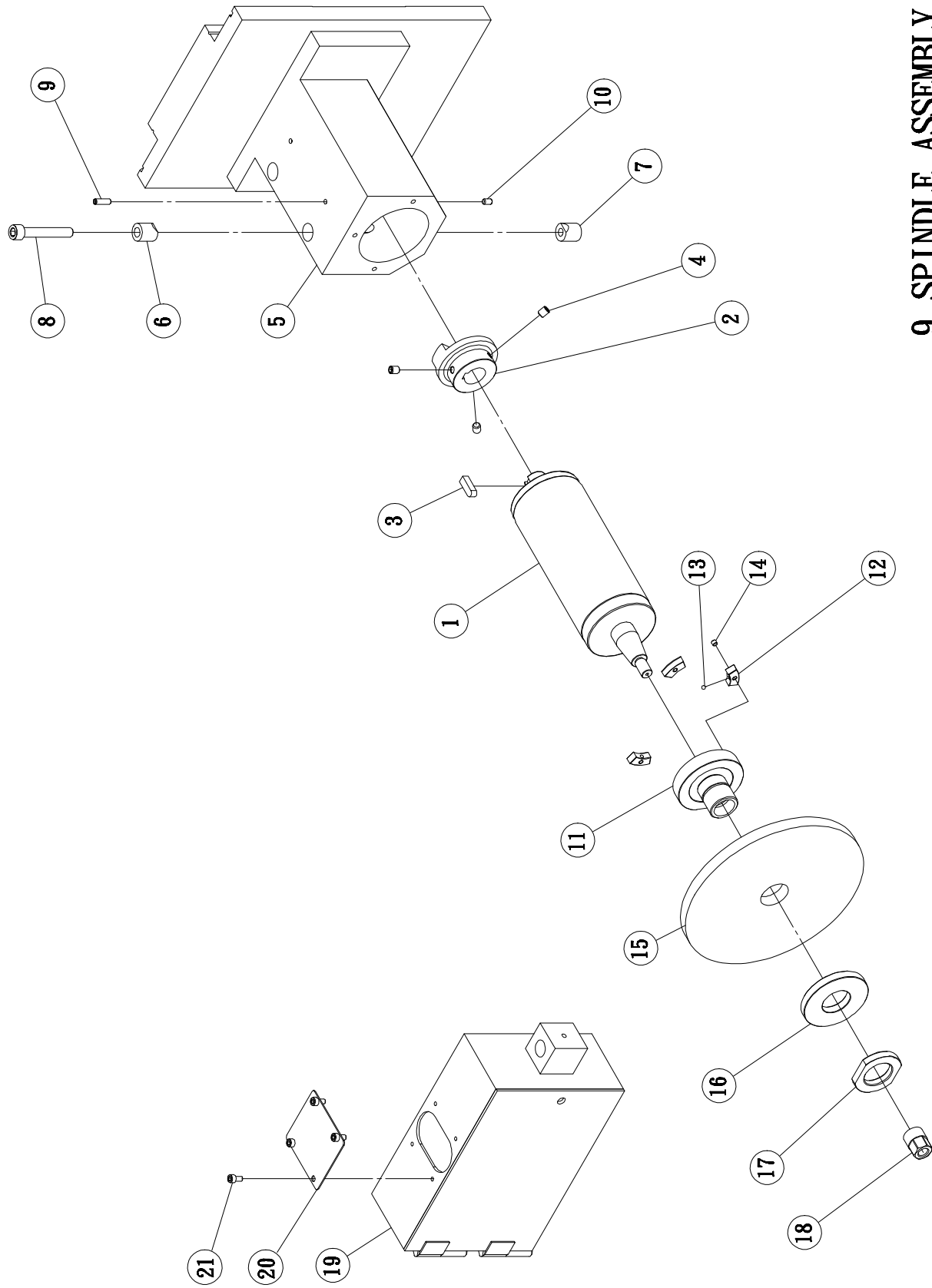
**8. COLUMN ASSEMBLY**



## COLUMN ASSEMBLY

NO.	DRAWING NO. /SPEC.	DESCRIPTION	Q/TY	NOTE
1	618-02-013	Column	1	
2	618-02-012A	Vertical rail (L)	1	
3	618-02-012B	Vertical rail (R)	1	
4	M10x1.5Px30L	Inner hexagonal screw	10	
5		Spindle assembly	1set	
6	618-02-015	Motor fixing board	1	
7		Motor	1	
8	618-04-011	Coupling	1	
9	M8-10L	Inner hexagonal headless screw	3	
10	8x8x40	Pin	1	
11	618-04-012	Rubber coupling	1	
12	M12x1.75Px45L	Inner hexagonal screw	8	
13	M12-25L	Inner hexagonal headless screw	4	
14	M10x1.5Px50L	Inner hexagonal screw	4	
15	618-02-004	Dust proof sheet	1	
16	618-02-005	Dust proof sheet	1	
17	618-02-006	Dust proof sheet	1	
18	618-02-007	Dust proof sheet	1	
19	618-02-008	Dust proof sheet	1	
20	618-02-003C	Front cover plate	1	
21	M10-10L	Inner hexagonal headless screw	10	
22	618-02-014	Plug	10	
23	618-02-023	Lubrication oil gauge	1	
24	∅29	Lubrication oil gauge glass	1	
25	M4x0.7Px45L	Inner hexagonal screw	2	
26	618-02-016	Rear cover plate	1	
27	M5x0.8Px12L	Cross round head screw	6	

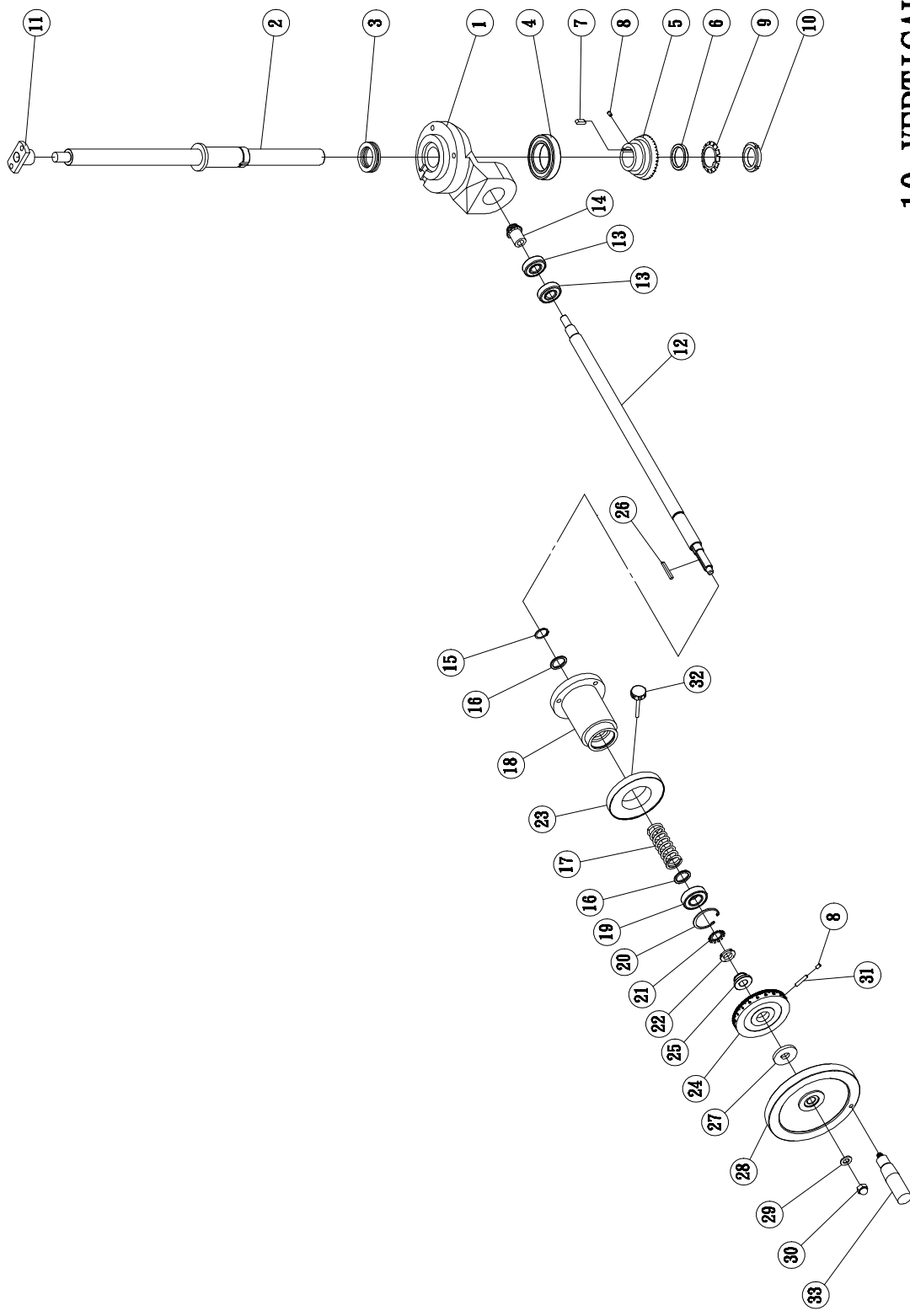




## 9. SPINDLE ASSEMBLY

## SPINDLE ASSEMBLY

NO.	DRAWING NO. /SPEC.	DESCRIPTION	Q/TY	NOTE
1	CB1224-120	Spindle	1	
2	618-04-011	Motor coupling	1	
3	8x7x25	Pin	1	
4	M8-10L	Inner hexagonal headless screw	3	
5	618-02-009	Spindle housing	1	
6	618-02-010A	Spindle fixing ring A	2	
7	618-02-010B	Spindle fixing ring B	2	
8	M10x1.5Px60L	Inner hexagonal screw	2	
9	M6-20L	Inner hexagonal headless screw	3	
10	M6-10L	Inner hexagonal headless screw	2	
11		Wheel flange	1	
12		Balancing block	3	
13	∅6	Steel ball	3	
14		Inner hexagonal headless screw	3	
15		Grinding wheel	1	
16		Flange spacer	1	
17		Flange fixing ring	1	
18		Tightening nut	1	
19	618-02-001	Wheel guard	1	
20	618-02-001B	Wheel guard top cover	1	
21	M5x0.8Px10L	Inner hexagonal screw	4	

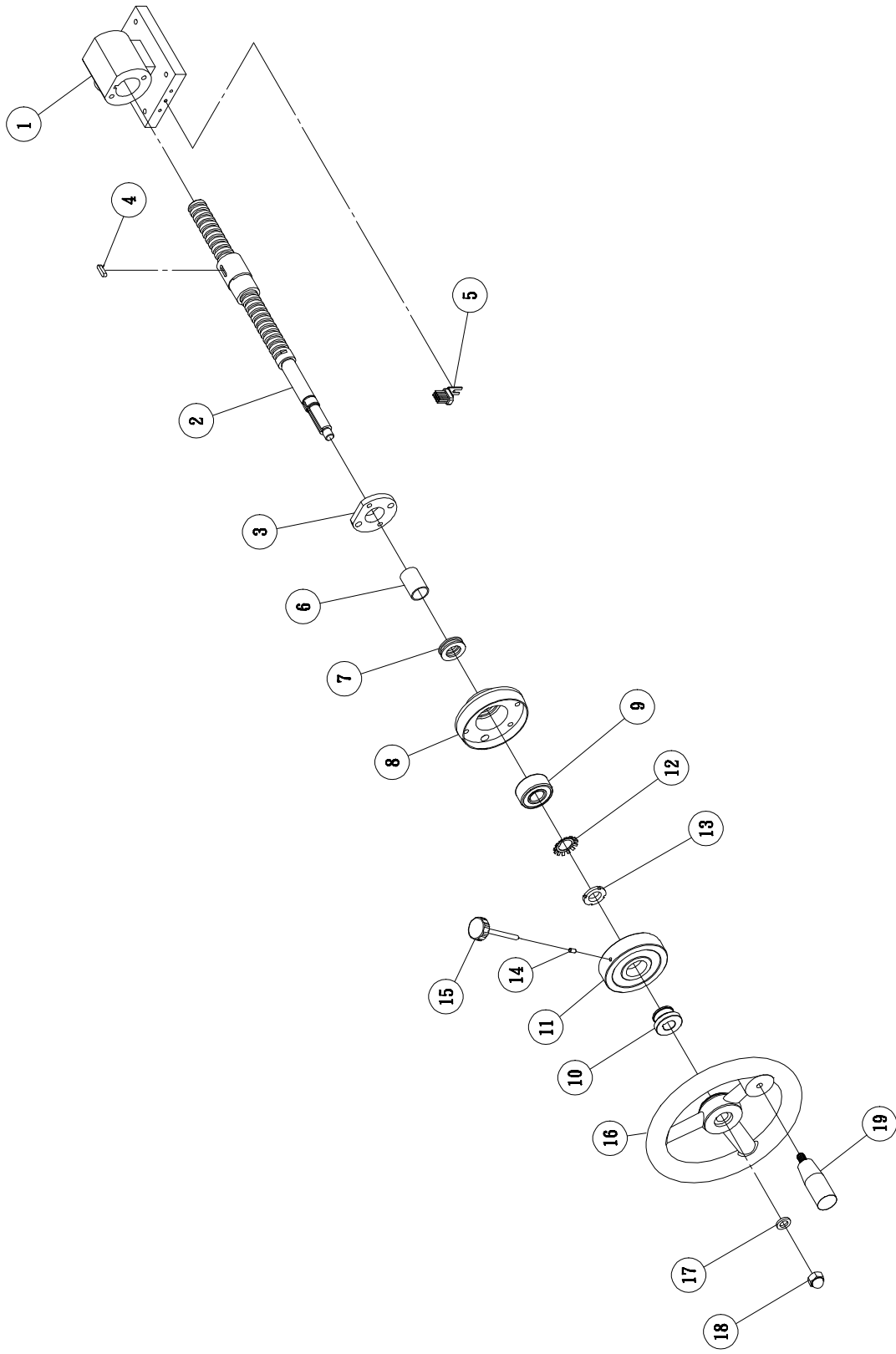


# 10. VERTICAL SCREW ASSEMBLY

## VERTICAL SCREW ASSEMBLY

NO.	DRAWING NO. /SPEC.	DESCRIPTION	Q/TY	NOTE
1	618-03-010	Vertical screw nut seat	1	
2	618-03-011	Vertical screw	1	
3	51108(40x42x60x13)	Bearing	1	
4	6011ZZ(55x90x18)	Bearing	1	
5	1900. 03. 14	Vertical gear	1	
6	618-03-020	Spacer	1	
7	7x7x22	Pin	1	
8	M6-10L	Inner hexagonal headless screw	2	
9	AW08	Serrate washer	1	
10	AN08(M40x1. 5P)	Nut	1	
11	618-03-013	Vertical screw top seat	1	
12	618-03-008	Vertical transmission shaft	1	
13	6204ZZ(20x47x14)	Bearing	2	
14	618-03-009	Vertical gear	1	
15	S25	snap ring	1	
16	618-03-020	Spacer	2	
17	618501500	Spring	1	
18	618-03-007	Vertical transmission shaft seat	1	
19	1205ZZ(25x52x15)	Bearing	1	
20	R52	Fixing ring	1	
21	AW04	Serrate washer	1	
22	AN04(M20x1. 0P)	Nut	1	
23	618-03-005	Vertical indication ring	1	
24	618-03-004	Vertical graduation ring	1	
25	618-03-018	Indication ring sleere	1	
26	5x5x45	Pin	1	
27	618-03-016	Spacer	1	

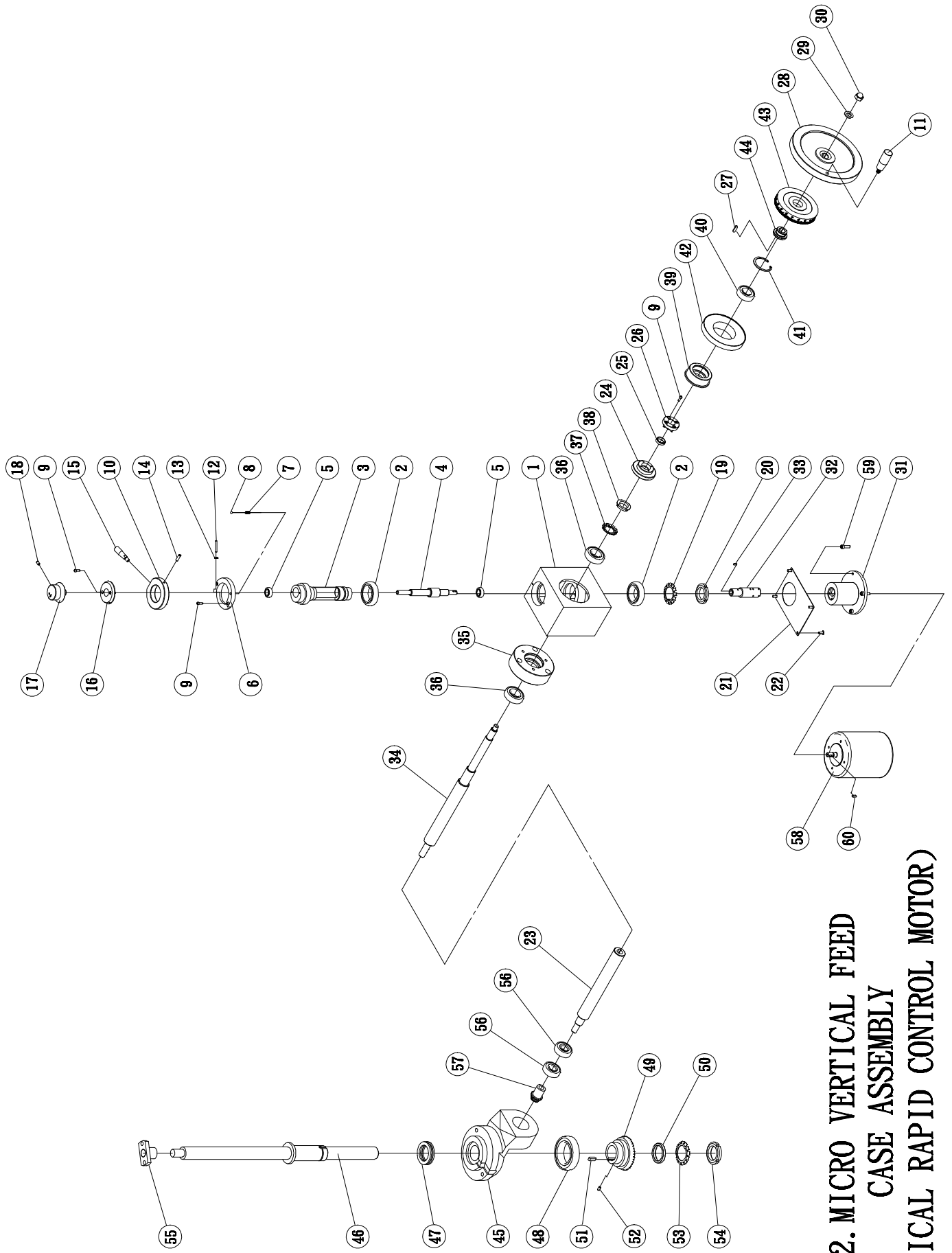




## 11. CROSSFEED SCREW FIXING SOCKET ASSEMBLY







**12. MICRO VERTICAL FEED  
CASE ASSEMBLY  
(VERTICAL RAPID CONTROL MOTOR)**

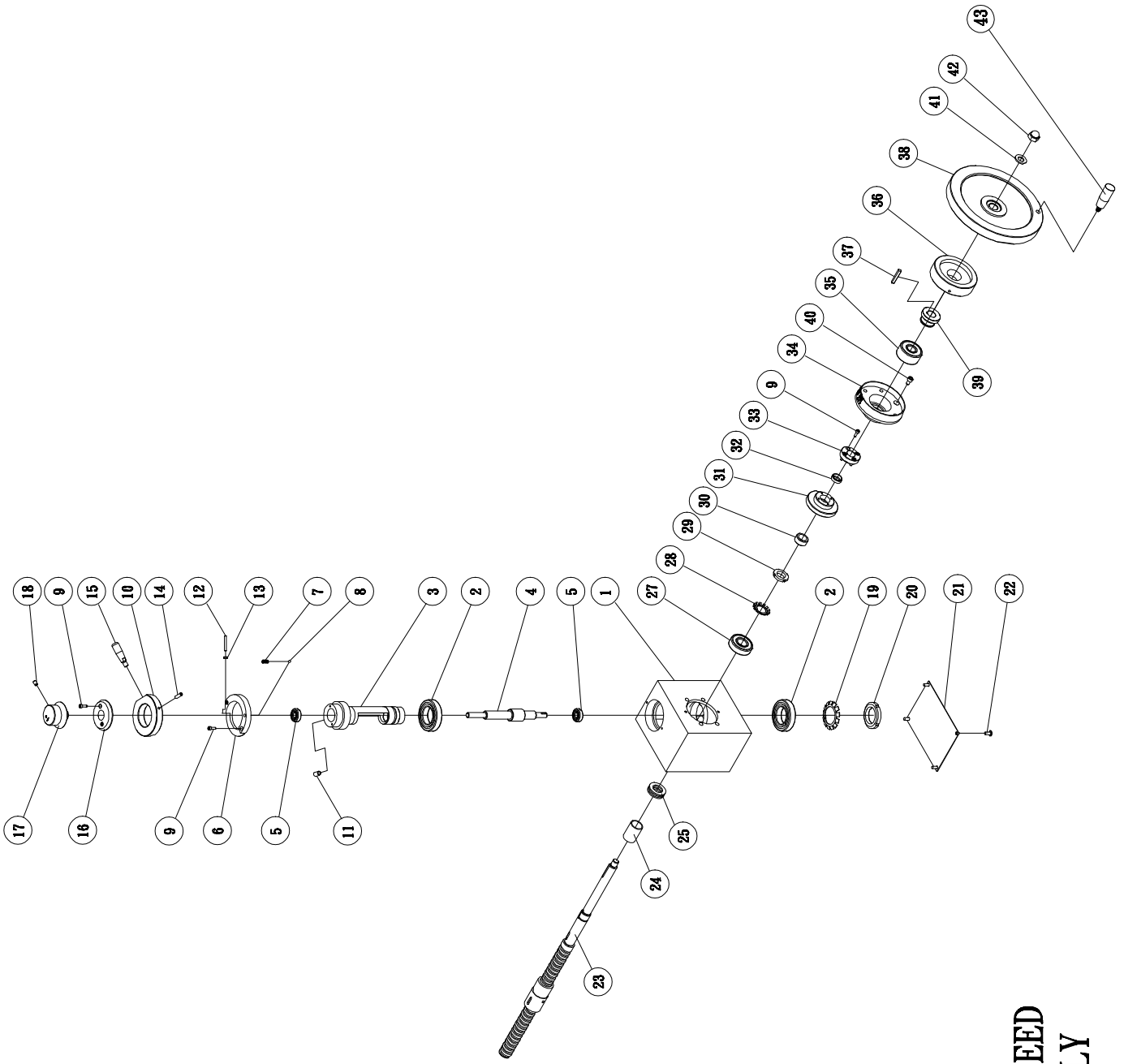
## MICRO VERTICAL FEED CASE ASSEMBLY (VERTICAL RAPID CONTROL MOTOR)

NO.	DRAWING NO. /SPEC.	DESCRIPTION	Q/TY	NOTE
1	CB618-D07	Micro Vertical feed Case	1	
2	6007ZZ(35x62x14)	Bearing	2	
3	CB618-C04	Micro vertical feed shaft	1	
4	CB618-D02	Micro vertical feed gear	1	
5	6000ZZ(10x26x8)	Bearing	2	
6	CB618-C06	Ring	1	
7	∅6 ODxP3x∅0.6x18L	Spring	1	
8	∅6	Steel ball	2	
9	M4x0.7Px12L	Inner hexagonal screw	1	
10	CB618-C05	Ring	1	
11	FR90-M10	Handle	1	
12	M4x0.7Px30L	Screw	8	
13	M4x0.7Px7Wx3.2H	Nut	1	
14	M6-20L	Inner hexagonal headless screw	1	
15	CB618-C13	Micro crossfeed handle	1	
16	CB618-C03	Micro vertical feed indication ring	1	
17	CB618-C01	Micro vertical feed graduation ring	2	
18	M6-10L	Inner hexagonal headless screw	1	
19	AW07	Serrate washer	1	
20	AN07(M35x1.5P)	Nut	1	
21	CB618-D08	Micro vertical feed case cover board	1	
22	M5x0.8Px12L	Cross round head screw	4	
23	CB618-D14	Vertical feed gear shaft	1	
24	CB618-D02	Micro vertical feed gear	1	
25	SC-20	Spacer ring	4	
26	CB618-D10	Micro vertical feed fixing ring	1	
27	5x5x20	Pin	1	

# MICRO VERTICAL FEED CASE ASSEMBLY (VERTICAL RAPID CONTROL MOTOR)

NO.	DRAWING NO. /SPEC.	DESCRIPTION	Q/TY	NOTE
28	KRA200	Handwheel	1	
29	13x24x2.5	Washer	1	
30	M12	Nut	1	
31	CB618-D19-ASD	Vertical feed motor socket	1	
32	CB618-D18-C2	Vertical feed motor shaft	1	
33	3x3x10	Pin	1	
34	CB618-D12	Vertical feed handwheel shaft	1	
35	CB618-D16	Micro vertical feed case fixing seat	1	
36	6205ZZ(25x52x15)	Bearing	2	
37	AW05	Serrate washer	1	
38	AN05(M25x1.5P)	Nut	1	
39	CB618-D17	Micro vertical feed case fixing ring	1	
40	6204ZZ(20x47x14)	Bearing	1	
41	R47	Fixing ring	1	
42	618-03-005	Vertical feed indication ring	1	
43	618-03-004	Vertical feed graduation ring	1	
44	618-03-018	Indication ring sleeve	1	
45	618-03-010	Vertical screw fixing seat	1	
46	618-03-011	Vertical leadscrew	1	
47	51108(40x42x60x13)	Bearing	1	
48	6011ZZ(55x90x18)	Bearing	1	
49	618-03-014	Gear	1	
50	618-03-020	Spacer	1	
51	7x7x22	Pin	1	
52	M6-10L	Inner hexagonal headless screw	1	
53	AW08	Serrate washer	1	
54	AN08(M40x1.5P)	Nut	1	





**13. MICRO CROSSFEED  
CASE ASSEMBLY**

## MICRO CROSSFEED CASE ASSEMBLY

NO.	DRAWING NO. /SPEC.	DESCRIPTION	Q/TY	NOTE
1	CB618-C07	Micro Crossfeed Case	1	
2	6007ZZ(35x62x14)	Bearing	2	
3	CB618-C04	Shaft	1	
4	CB618-D02	Micro crossfeed gear	1	
5	6000ZZ(10x26x8)	Bearing	2	
6	CB618-C06	Ring	1	
7	∅6 ODxP3x∅0.6x18L	Spring	1	
8	∅6	Steel ball	1	
9	M4x0.7Px12L	Inner hexagonal screw	8	
10	CB618-C05	Ring	1	
11	M8-15L	Inner hexagonal headless screw	1	
12	M4x0.7Px30L	Screw	1	
13	M4x0.7Px7Wx3.2H	Nut	1	
14	M6-20L	Inner hexagonal headless screw	1	
15	CB618-C13	Micro crossfeed handle	1	
16	CB618-C03	Micro crossfeed indication ring	1	
17	CB618-C01	Micro crossfeed graduation ring	1	
18	M6-10L	Inner hexagonal headless screw	1	
19	AW07	Serrate washer	1	
20	AN07(M35x1.5P)	Nut	1	
21	CB618-C08	Micro crossfeed case cover board	1	
22	M5x0.8Px12L	Cross round head screw	4	
23	CB618-C12	Micro crossfeed ballscrew	1	
24	618-05-019	Ring	1	
25	51104(20x21x35x10)	Bearing	1	
26				
27	6204ZZ(20x47x14)	Bearing	1	

