

# ACER

## PARTS LIST

### Vertical Machine Center

### Model: VMC-2240XL

**TAIWAN: FORMOSA SPRINGWOOD INTERNATIONAL, INC.**

**NO. 101, 506 LANE SENG-TSO ROAD, SENG KARNG SHARNG,**

**TAICHUNG COUNTY, TAIWAN**

**TEL: 886-4-520-4120**

**FAX: 886-4-2520-4123**

**[WWW.ACERONLINE.NET](http://WWW.ACERONLINE.NET)**

**NJ: KLIM INDUSTRIAL, INC.**

**244N. RANDOLPHVILLE ROAD**

**PISCATAWAY, NJ 08854 USA**

**TEL: (732)752-9100      FAX: (732)752-9101**

**[WWW.ACERONLINE.NET](http://WWW.ACERONLINE.NET)**

**CA: SPRINGWOOD INDUSTRIAL, INC.**

**1062N.KRAEMERPLACE**

**ANAMEIM, CA 92806 USA**

**TEL: (714) 632-9701      FAX: (714) 632-9701**

**[WWW.ACERONLINE.NET](http://WWW.ACERONLINE.NET)**

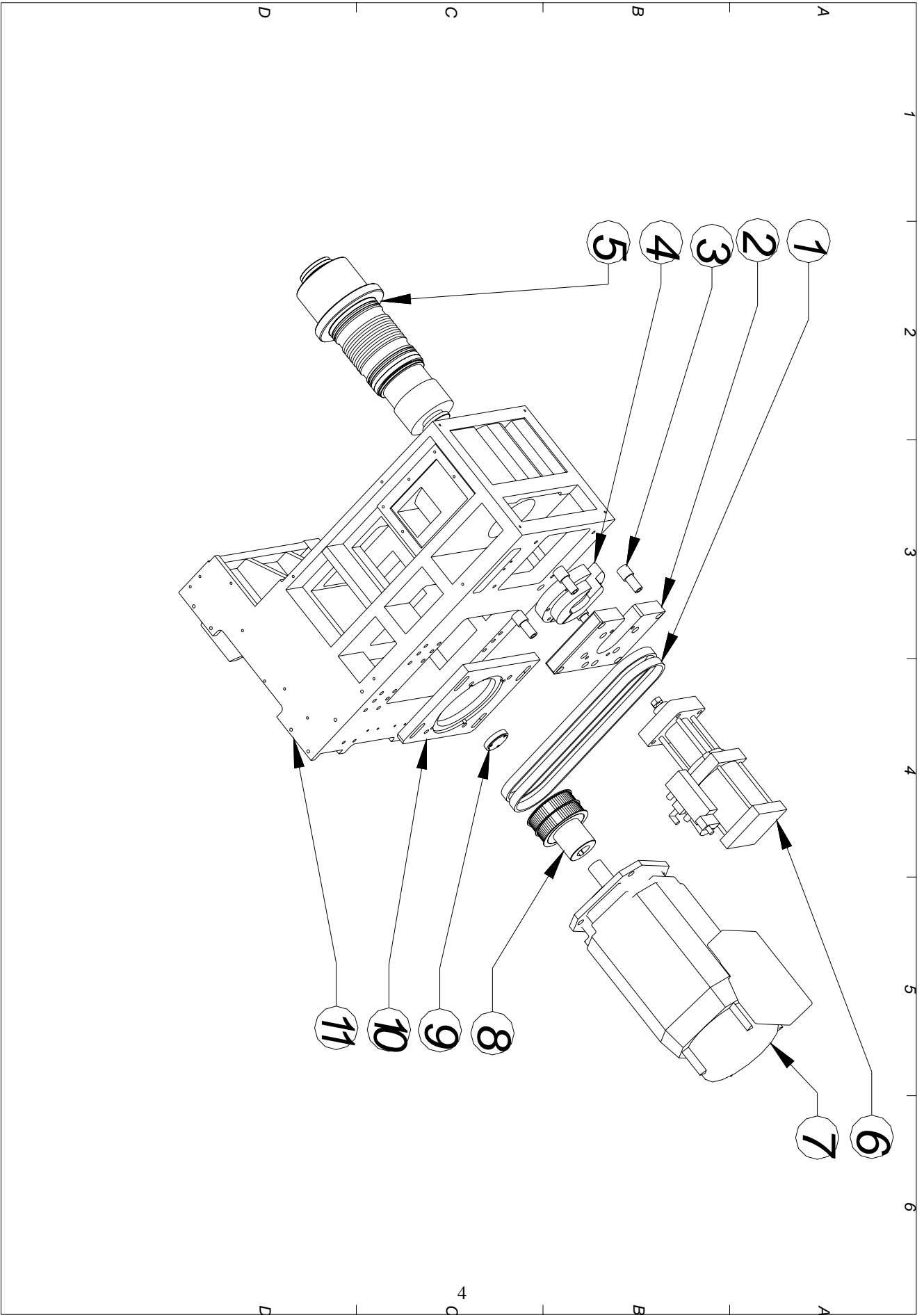
**2009.04.10**

# PART LIST

	page
1. Spindle assembly unit	3
2. Direct drive spindle assembly unit	5
3. Column assembly unit	8
4. X axis assembly unit	11
5. Y axis assembly unit	14
6. Cover assembly unit	17
7. External sheet metal cover	29
8. Spindle and full cover sheet metal cover	22
9. Electric cabinet and operational box sheet metal	24
10.Coolant system sheet metal	27
11.Counter weight assembly unit	29

## Spindle assembly unit

Item	Description	Part NO.	Spec	Q'ty
1	Belt			2
2	Augmented pressure tank fixed plate	M121008		1
3	Augmented pressure tank fixed bracket	M081012		4
4	Floating plate	M081015		1SET
5	Spindle unit H	M081002H	8000rpm B40-150A	1
	Spindle unit I	M081002I	10000rpm B40-150A	
	Spindle unit J	M081002J	12000rpm B40-150A	
6	Augmented pressure tank	SW15-G43T13D000	G4000,3T*D *13m/m	1
7	Spindle motor			1
8	Belt driven wheel	M081005	5GT-68T, KEY	1
9	Belt driven wheel cover	M081009		1
10	Spindle motor fixed plate	M081004		1
11	Spindle set	M081001A	ψ150 A	1

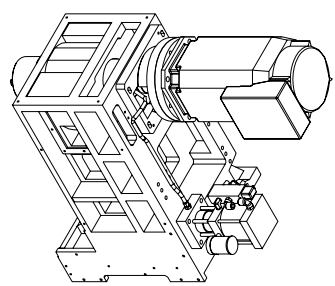
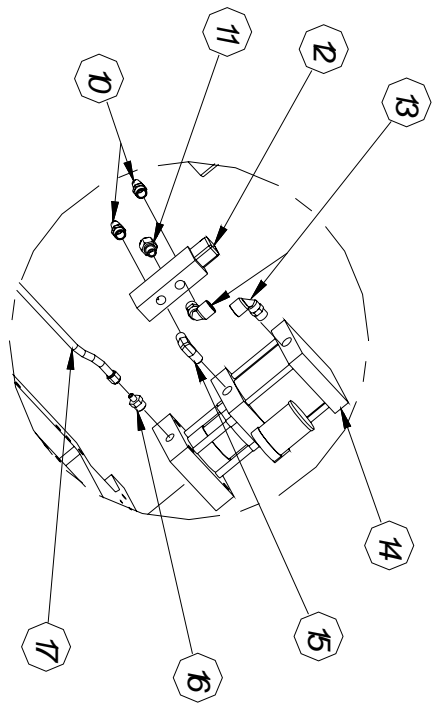
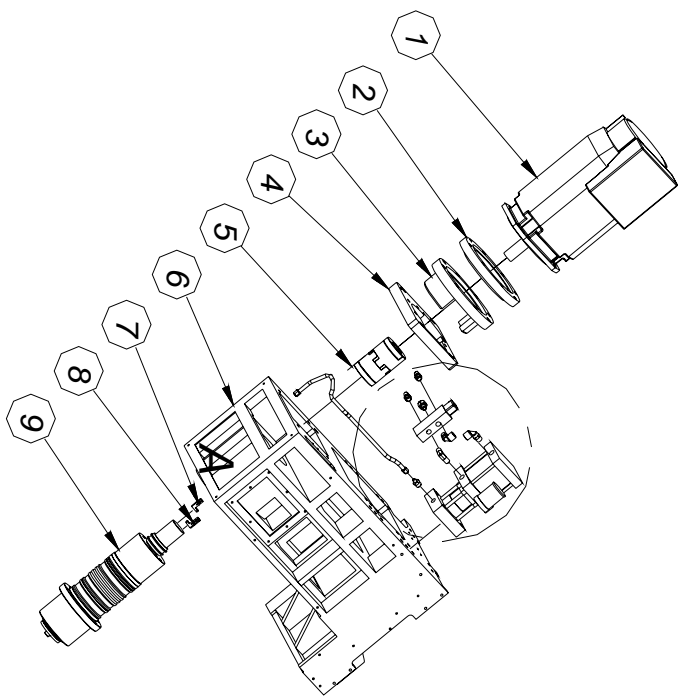


## Direct drive spindle assembly unit

Item	Description	Part NO.	Spec	Q'ty
1	Mitsubishi spindle motor	SJ-PF7.5-01	7.5kw	1
2	Direct drive transmission adjustment plate	M081010A		1
3	Direct drive connecting bracket	M081011		1
4	Direct drive connecting bracket	M081014		1
5	Spindle coupling unit	M061012A	SJ42/55-126mm ψ32-ψ50	1
6	Spindle set	M081001A		1
7	Induction sensor fixed bracket	M121020-1		1
8	Induction sensor fixed bracket	M121019-1		1
9	Direct drive spindle		rpm8000	1
		M121002P	rpm10000	
		M121002Q	rpm12000	
		M121002R	rpm15000	
10	Noise muffler		PT3/8	2
11	Fast direct connection joint		ψ12*1/4H	1
12	Electric solenoid	MVSD-300-4E1	2~7kgf/cm <sup>2</sup>	1

13	Fast right angle connection joint		ψ12*PT3/8	2
14	Augmented pressure unit	A05-00054	70C.C*11	1
15	Right angle connection joint		PT3/8*PT3/8	1
16	Direct connection joint		PT3/8*1/4H	1
17	High pressure oil tube		500L*1/4H	1

1 2 3 4 5 6



A

B

C

D

A

B

C

D

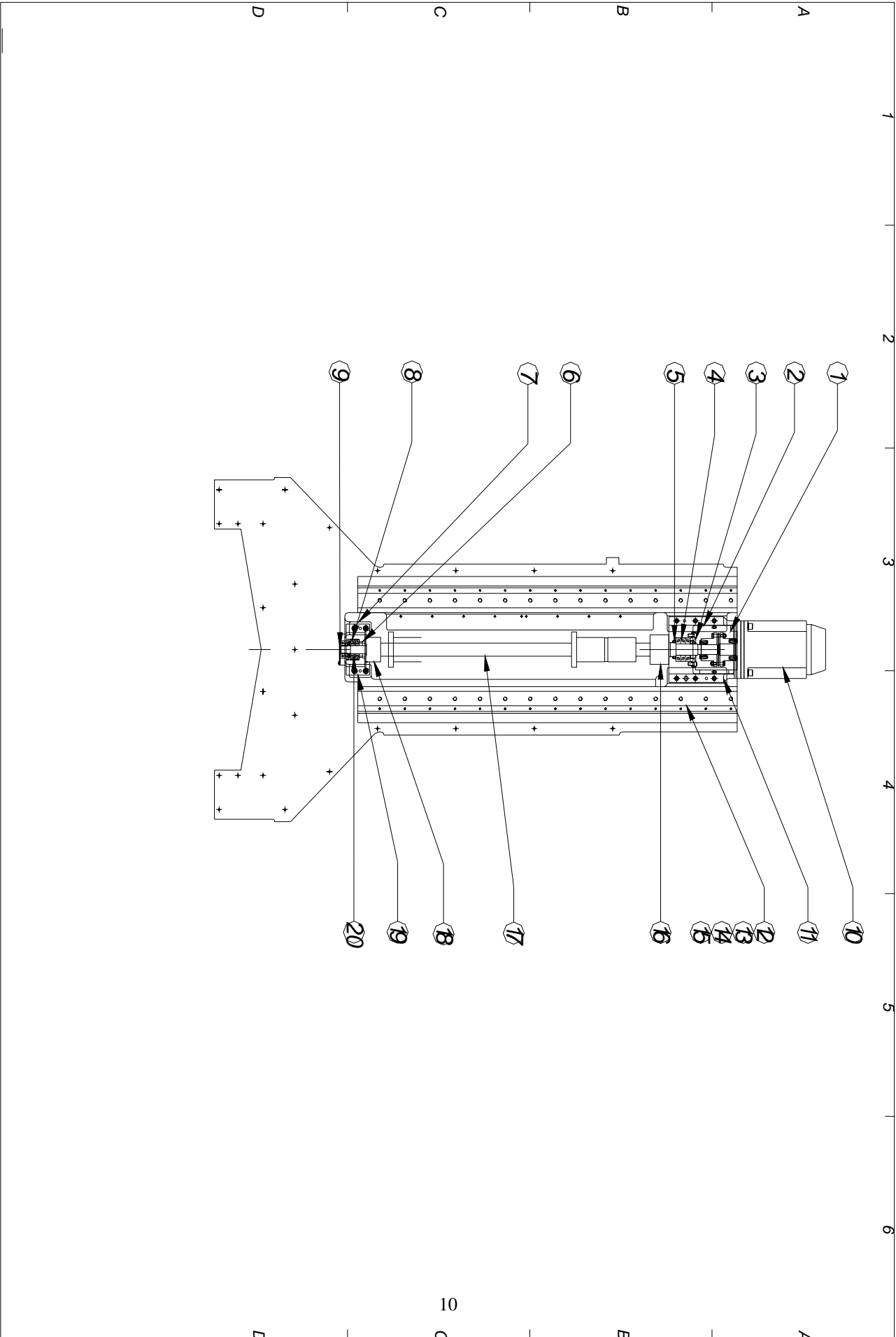
L

## Column assembly unit

Item	Description	Part NO.	Spec	Q'ty
1	Z axis coupling unit	M082011	ψ30-ψ35	1
2	High precision locked screw nut	S1222-35150YSF2	M35*P1.5	1
3	Motor set pre-load cover	M082008		1
4	Ball bearing	S1100-35720000	35*72	3
5	Oil seal	S1502-040055008	40*55*8t	1
6	Oil seal	S1502-040052008	40*52*8t	1
7	Rear side washer	M082010		2
8	Ball bearing	S1100-25620000	25*62	2
9	Rear side cover	M08A128		1
10	Z axis motor			1
11	Z axis motor set	M082006		1
12	Z axis linear guide way	M082003A	45 1206L 20/31	2
13	Z axis slide way	M082003B	1621-423-30	4
14	Z axis slide way washer	M082004		4
15	T2 slot	M121016		24
16	Z axis motor set mechanical block	M082005A	ψ90*108L	1



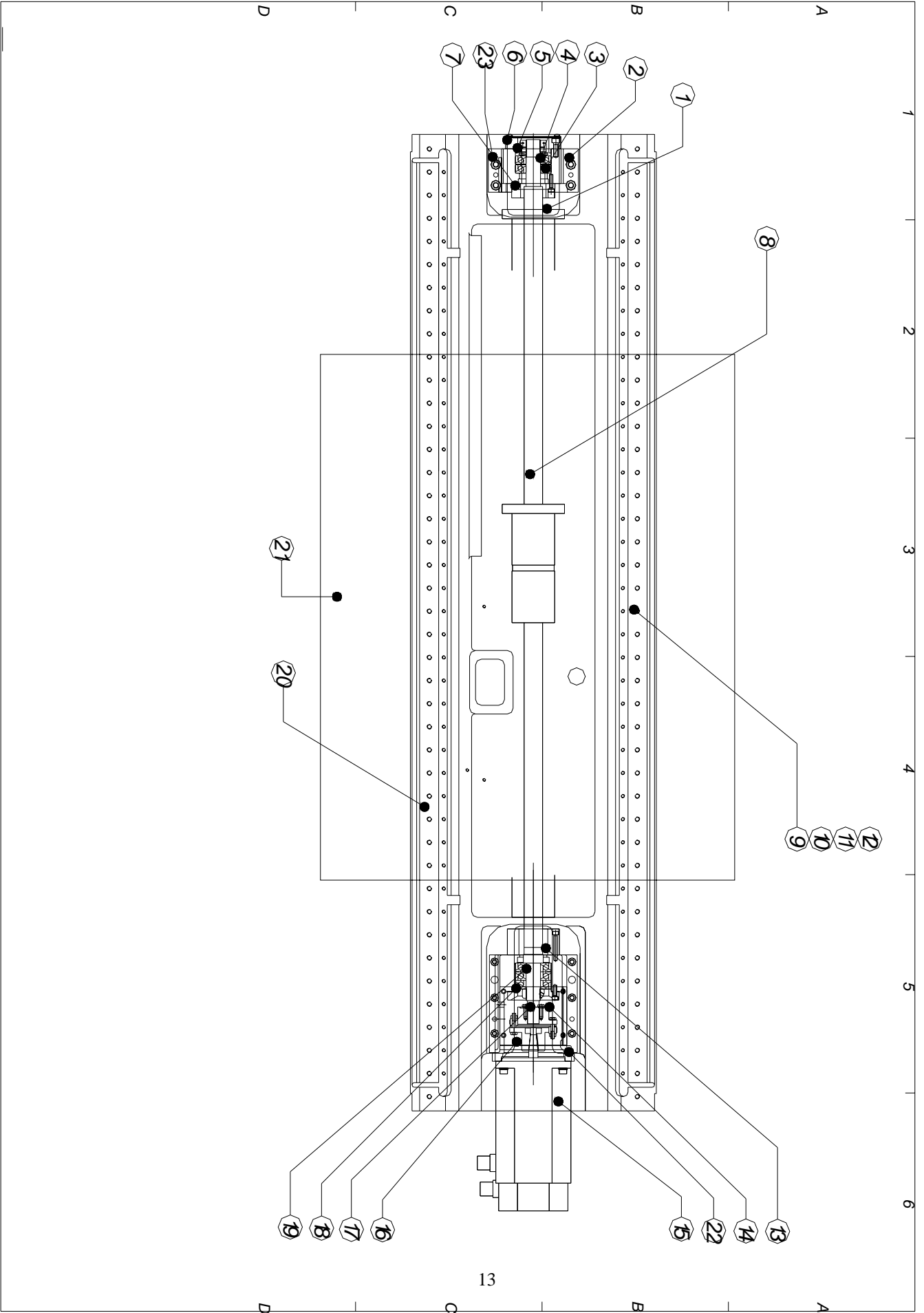
17	Z axis ball screw	M082002	ψ40 P12	1
18	Z axis rear side mechanical block	M082005B	ψ75*37L	1
19	Rear side bracket	M082007		1
20	Locked screw nut	S1222-25150YSK0	M25*P1.5	1
21	Disk type bake plate	M062017	50*25.3*2	2
22	Column	M082001		1



### X axis assembly unit

Item	Description	Part NO.	Spec	Q'ty
1	Rear side mechanical block	M103005B	ψ75*20L	1
2	Rear side washer	M082010		2
3	Ball bearing	S1100-25620000	25*62	2
4	Disk type brake plate	M062017	50*25.3*2	2
5	High precision screw nut	S1222-25150YSK 0		1
6	Rear side bracket cover	M08A128	1621-323-20	1
7	25*52*8t Oil seal	S1502-02505200 8	25*52*8t	1
8	X axis ball bearing		R32-12B2-FDWC-1317-1530-0.0 08	1
	X axis ball bearing	M103002A	R40-12B2-FDVC-1317-1530-0.0 08	1
9	X axis linear way	M103003A	35 1605-303-31-1770L	2
10	X.Y axis slide way	M083003B	1621-323-20	4
11	XY axis slide way washer	M083004		4
12	T2 slot	M121016		42

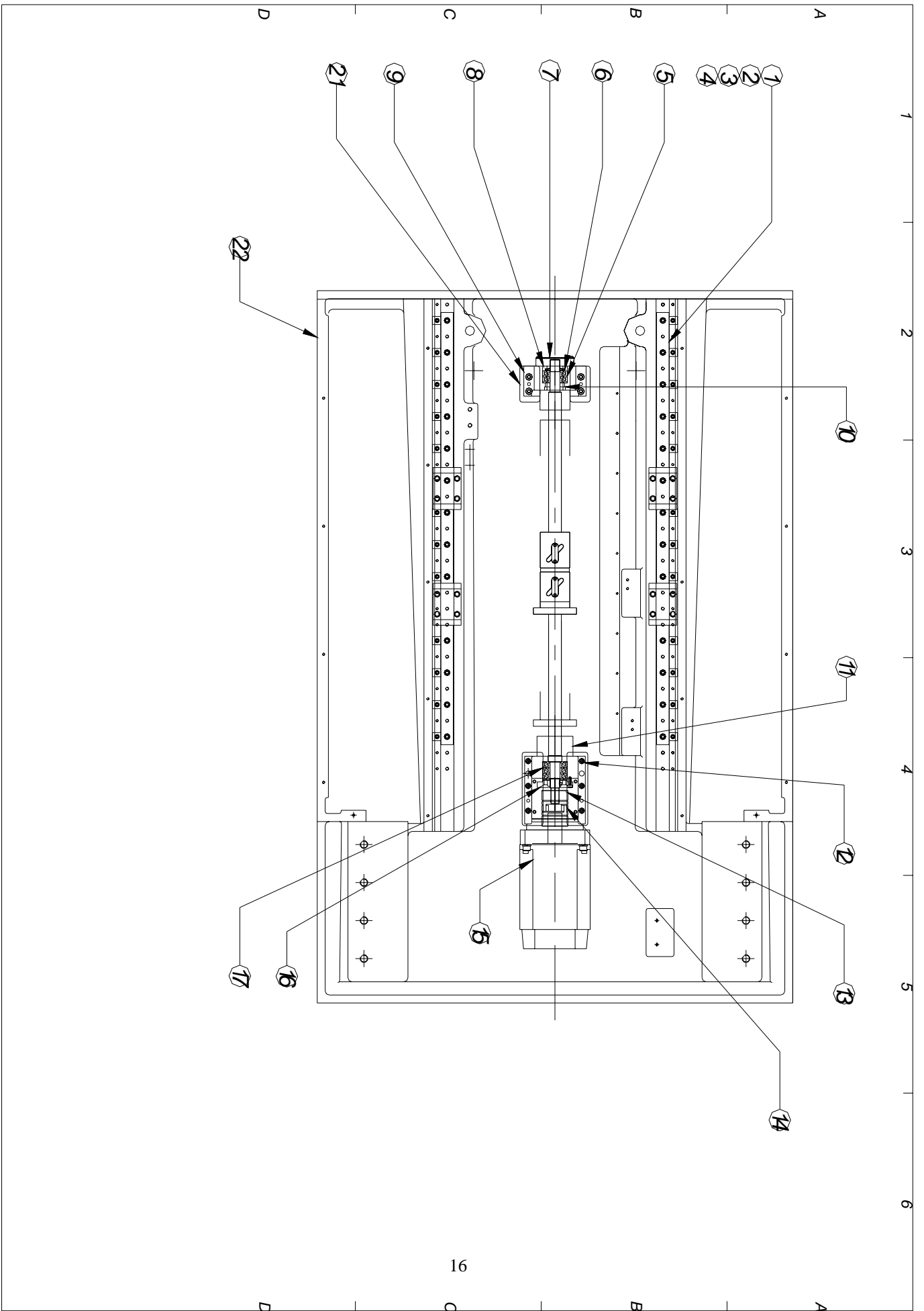
13	Motor set mechanical block	M083005A	ψ90*80L	1
14	Motor set pre-load cover	M083008		1
15	X axis motor			1
16	Spindle coupling unit	M063006	ψ20-ψF16	1
17	High precision locked screw nut	S1222-25150YSF	M25*P1.5	1
18	Ball bearing	S1100-25620000	25*62	3
19	34*55*9t Oil seal	S1502-03405500 9	34*55*9t	1
20	Saddle way	M103001		1
21	Work table	M104001		1
22	Motor bracket	M083006		1
23	Rear side bracket	M082007		1



## Y axis assembly unit

Item	Description	Part NO.	Spec	Q'ty
1	Y axis linear way	M085003A	35 1115L 60/15	2
2	Y axis slide block	M085003B	1621-323-20	4
3	XY axis slide way washer	M083004		4
4	T2 slot	M121016		28
5	Ball bearing	S1100-25620000	25*62	1
6	Disk type bracket plate	M062017	50*25.3*2	2
7	Rear side cover	M08A128		1
8	Locked screw nut	S1222-25150YSK0	M25*P1.5	1
9	Rear side washer x2	M082010		2
10	Oil seal	S1502-025052008	25*52*8t	1
11	Y axis motor set mechanical block	M085005A	ψ90*72L	1
12	Motor set	M083006		1
13	High precision bearing locked screw nut	S1222-25150YSF	M25*P1.5	1
14	Spindle coupling unit	M062011	ψ20-ψ35	1
15	Y axis motor			1
16	Motor set pre-load cover	M083008		1

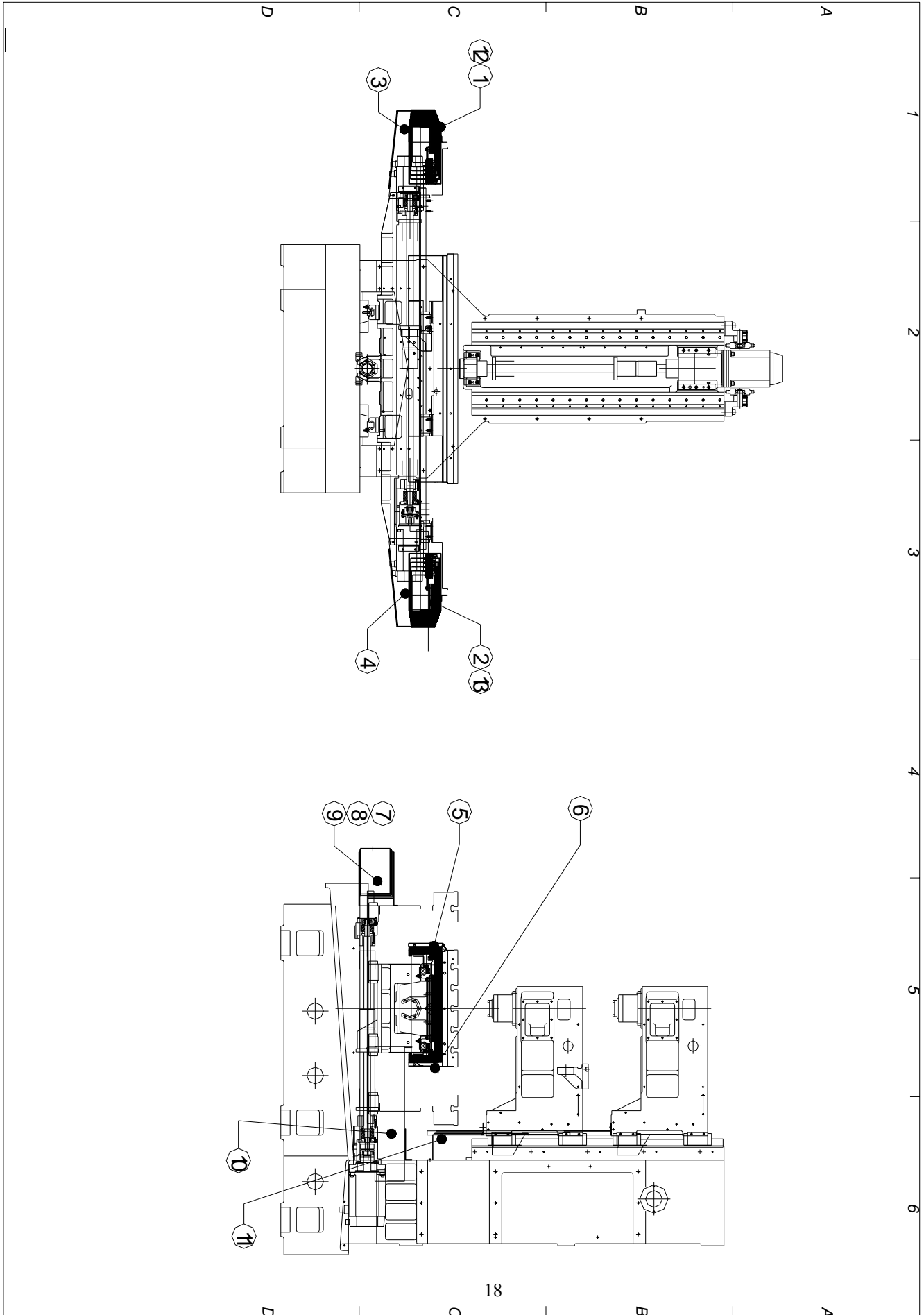
17	Ball bearing	S1100-25620000	25*62	3
18	Oil seal	S1502-034055009	34*55*9t	1
19	Y axis ball screw	M085002	ψ32 P12	1
20	Y axis rear side mechanical block	M085005B	ψ75*35L	1
21	Rear side bracket	M082007		1
22	( Bottom bracket )	M085001		1





## COVER

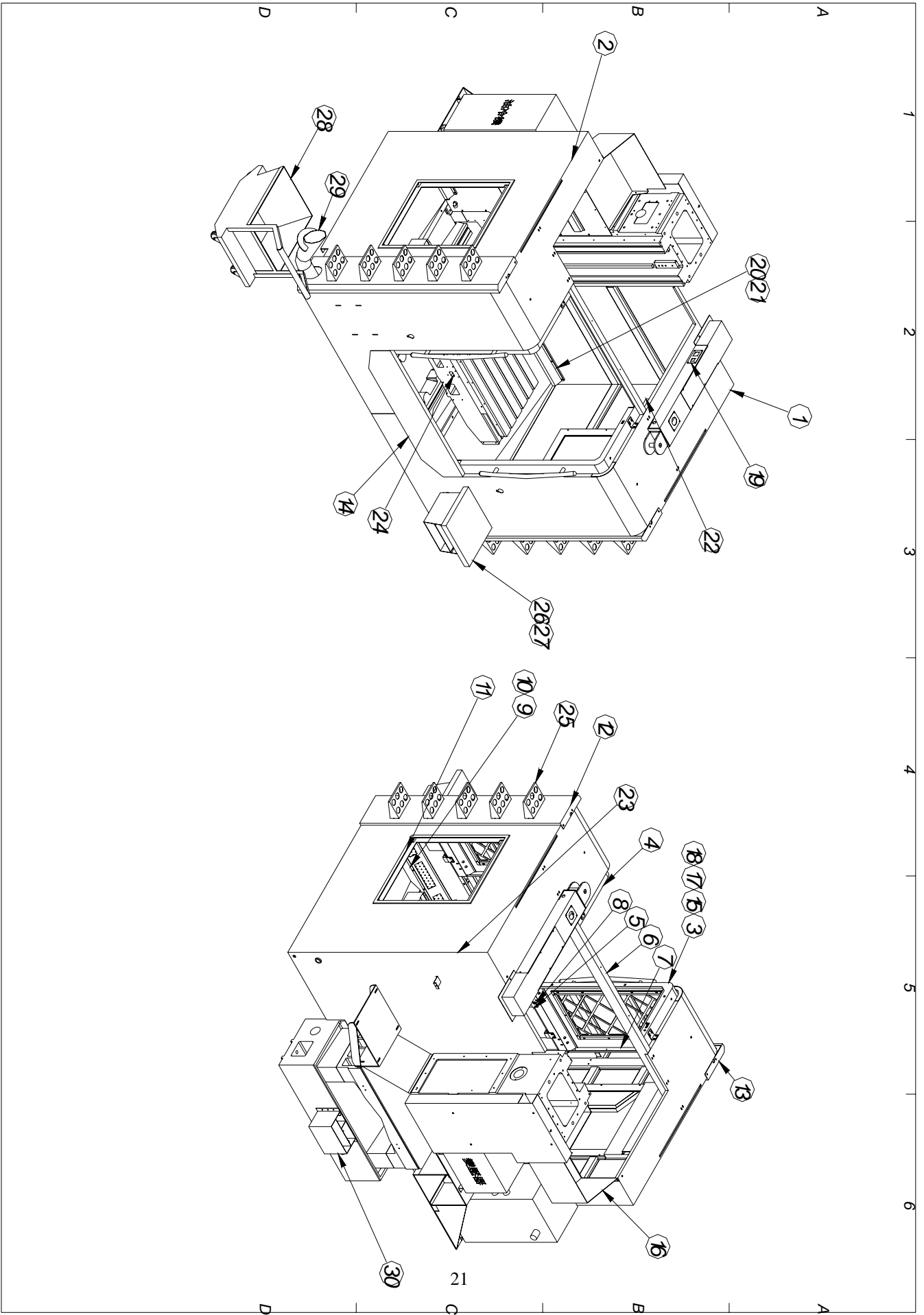
Item	Description	Part NO.	Remarks	Q'ty
1	X axis left telescopic cover	M108001	EMV1020	1
	X axis left telescopic cover	M108001A	EMV1020 adopt 2.0KW motor	1
2	X axis right telescopic cover	M108002	EMV1020	1
	X axis right telescopic cover	M108002A	EMV1020 adopt 2.0KW motor	1
3	X axis full cover left bracket	M108003A	EMV1020	1
	X axis full cover left bracket	M108003B	EMV1020	1
4	X axis front cover plate	M108004A	EMV1020	1
	X axis rear cover plate	M108004B	EMV1020	1
5	Y axis front telescopic cover	M088005	EMV860/EMV1020	1
6	Y axis front & left telescopic cover	M088006A	EMV860/EMV1020	1
	Y axis front & right telescopic cover	M088006B	EMV860/EMV1020	1
7	Y axis rear telescopic cover	M088007	EMV860/EMV1020	1
8	Z axis telescopic cover	M088008	EMV860/EMV1020	1
9	X axis left support bracket	M108009A	EMV1020	2
	X axis right support bracket	M108009B	EMV1020	2



cover sheet metal assembly unit

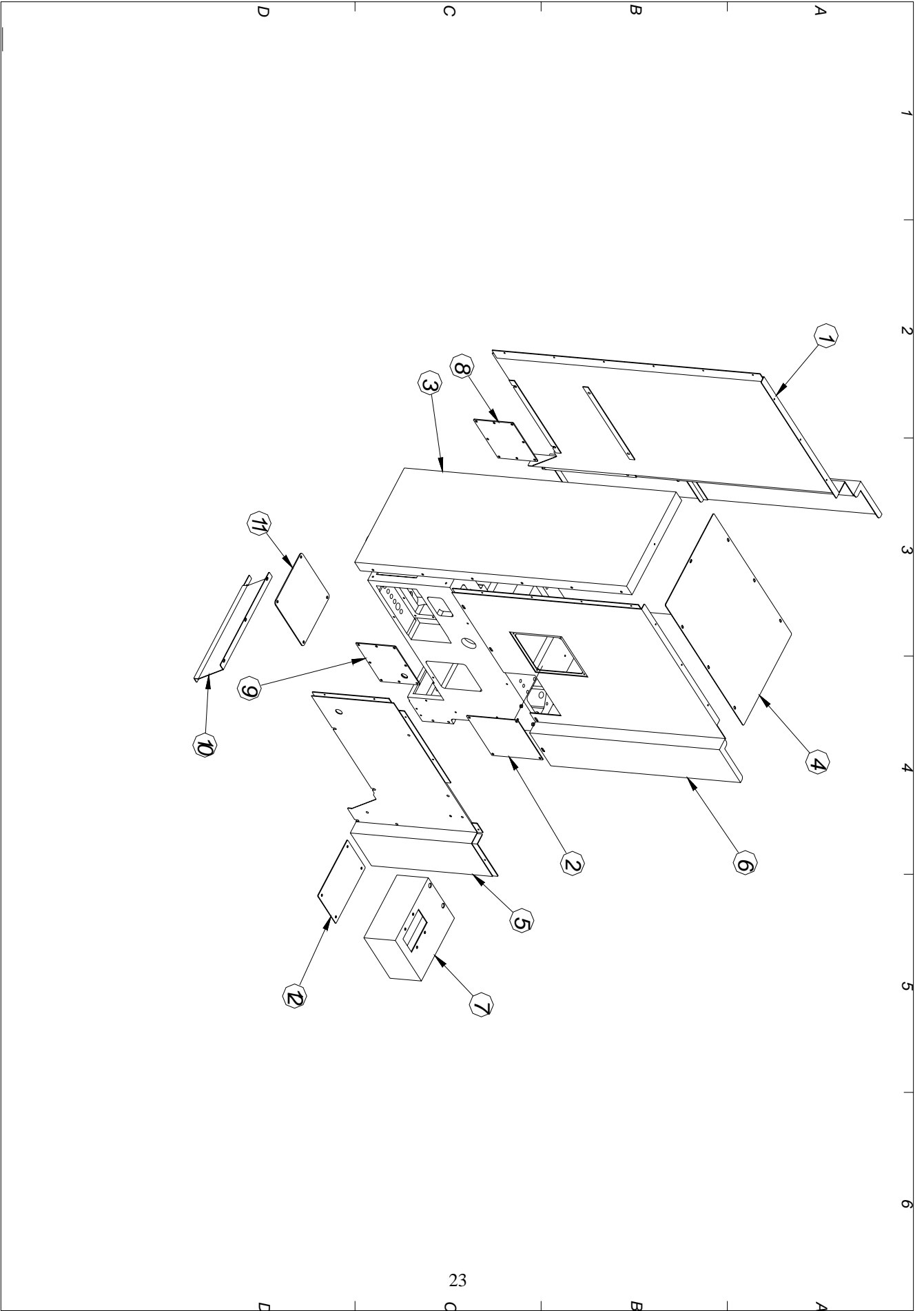
Item	Description	Part NO.	Spec	Q'ty
1	Left splash guard	M10A001		1
2	Right splash guard	M10A002		1
3	Front door ( Left )	M10A003		1
4	Front door ( Right )	M10A004		1
5	Upper door guide way	M10A005		1
6	Lower door guide way	M10A006		2
7	Front door water buffle	M10A007		2
8	Front door adjustment plate	M10A008		4
9	Left anti-chip slot	M10A009		1
10	Right anti-chip slot	M10A010		1
11	Side window handle	M10A011		2
12	Left decoration plate	M10A012		1
13	Right decoration plate	M10A013		1
14	Protection guide way	M10A014		1
15	Front door transparent window	M10A015		2
16	Side window ( Pull type )	M10A015A		2
17	ATC rear cover	M10A016		1

18	(Front door conjunction plate)-up & down	M10A018A		4
19	(Front door conjunction plate)-left & right	M10A018B		4
20	Linear way side cover	T51A027		1
21	Water tube cover plate	M10A029		2
22	Spritz tube	M10A030		2
23	Anti-explosion tube cover plate	M10A031		1
24	Saddle way front cover	M08A105		1
25	Tool stand	C540201		10
26	Work table	C560401-1		1
27	Work table gap	C560402		1
28	chip cart	C520103		1
29	Anti-chip tube	M06A405		1
30	Oil skimmer	C512002		1



### Spindle & full cover assembly unit

Item	Description	Part NO.	Spec	Q'ty
1	Spindle set and full cover ( left )	M08A111		1
2	Spindle set and full cover ( right)S	M06A112		1
3	Spindle set and front full cover	M08A113		1
4	Spindle set and upper full cover	M08A114		1
5	Spindle set and full cover (Right& bottom )	M08A115A		1
6	Spindle set and full cover (Right& Upper )	M08A115B		1
7	Protection tubes set	M08A115C		1
8	Spindle oil seal cover ( left)	M08A116		1
9	Spindle oil seal cover ( right )	M08A116A		1
10	Spindle set and full cover			1
11	Spindle set and full cover	M08A118		1
12	Protection tubes set lower cover plate	M10A131		1

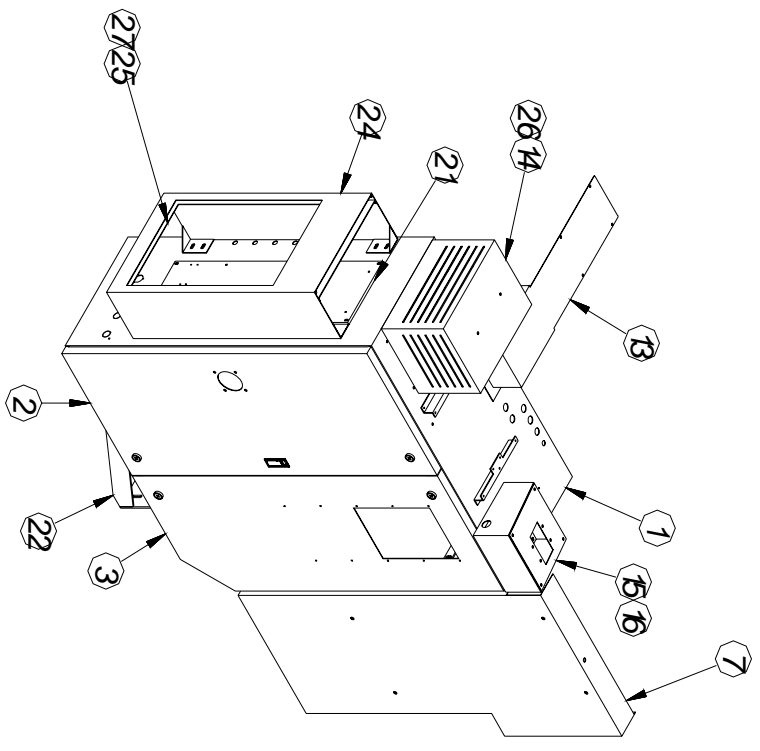
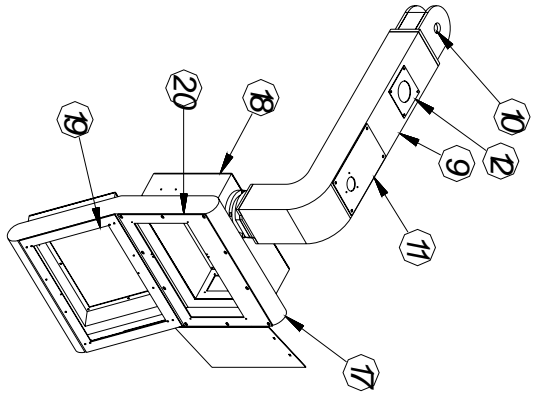
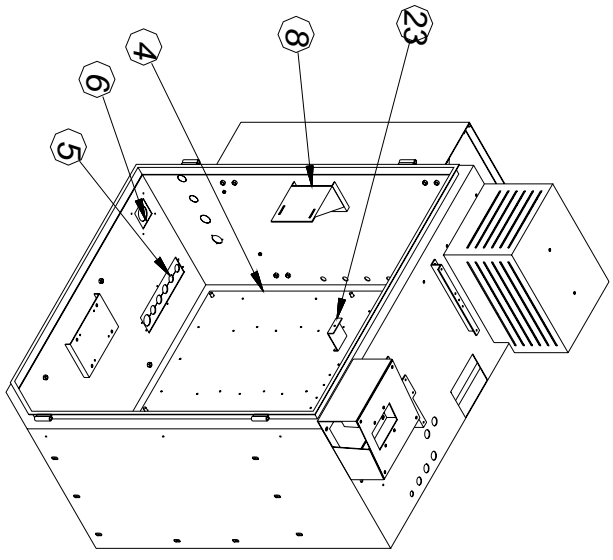


## Electric cabinet and Operational box sheet metal

Item	Description	Part NO.	Spec	Q'ty
1	Electric cabinet	M10A201		1
2	Electric cabinet left door	M10A202		1
3	Electric cabinet right door	M10A203		1
4	Distribution board	M10A204A		1
5	Electric cabinet connection plate A	M06A205		2
6	Electric cabinet connection plate C	M06A207		2
7	Rear decoration plate	M10A209		1
8	On-off button set	M06A210		1
9	Evolving arm	M10A211		1
10	Evolving arm and spindle shaft	M10A211A		1
11	Evolving arm and cover plate	M10A212		1
12	Water-proof connection joint and interference set	M10A213		2
13	Full cover linear way and cover	M10A214-1		1
14	Electric resistance discharge cover plate	T51A214S1		1
15	Electric cabinet switching box	M10A215		1
16	Electric cabinet switching box cover )	M10A216		1



17	Operational box	M06A219		1
18	Operational box rear cover	M06A220		2
19	Control panel fixed plate	M10A221		1
20	Screen fixed plate	M06A221		1
21	Pneumatic wiring board	T51A222		1
22	Electric cabinet support bracket )	M10A224		1
23	Driver bracket	M06A225		4
24	Wiring board support bracket	M10A227-1		1
25	Wiring board support handle	M10A228		1
26	Electric resistance discharge set bracket	T51A228S		1
27	Support bracket acrylic plate	M10A229		1



1 2 3 4 5 6

A

B

C

D

A

B

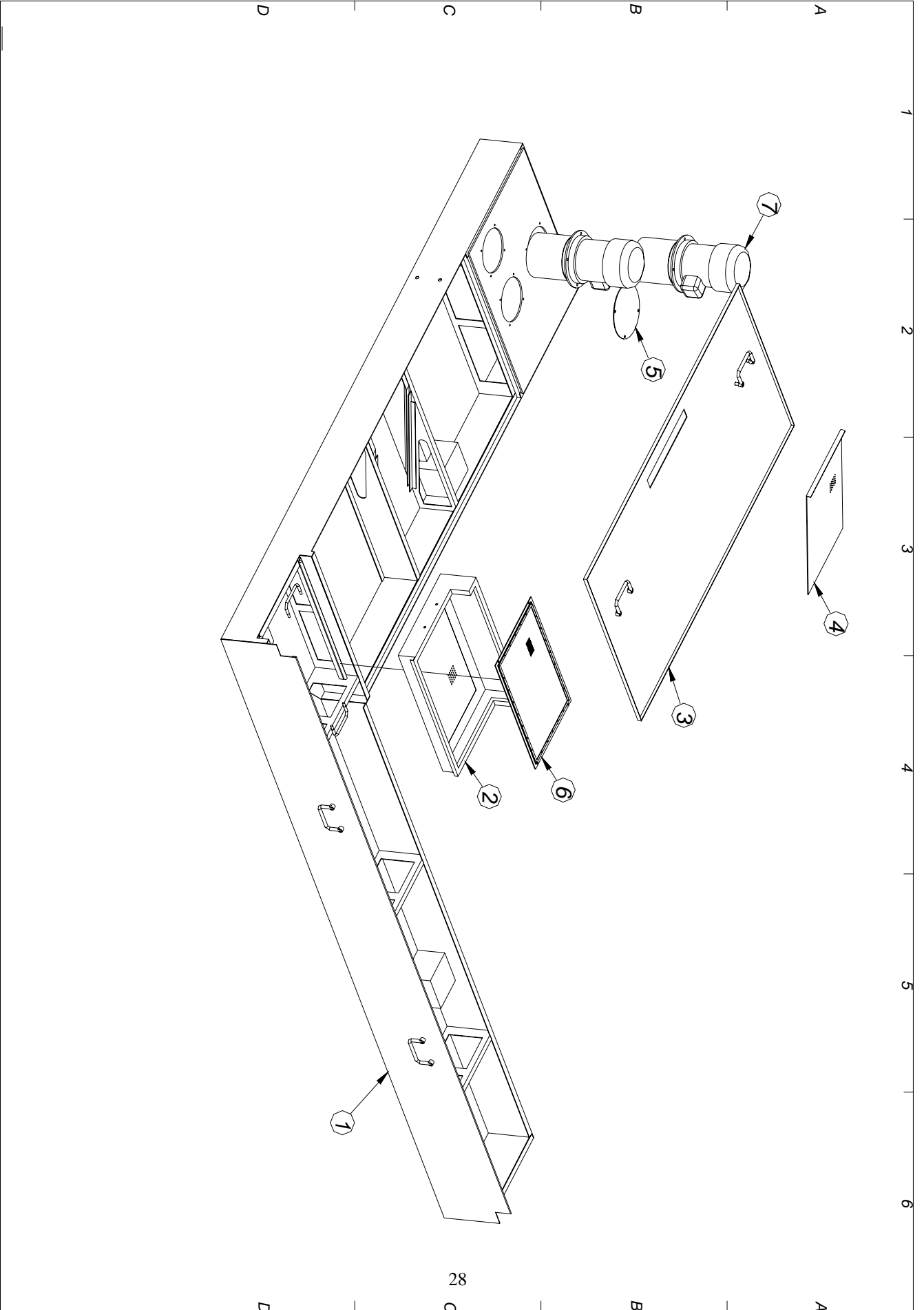
C

D

26

## Coolant tank sheet metal

Item	Description	Part NO.	Spec	Q'ty
1	Coolant tank	M10A401		1
2	Dust collector	M06A408		1
3	Coolant tank cover	M10A403		1
4	Filter mesh	M10A404		1
5	Motor set cover plate	M10A405		1
6	Coolant tank sub-dust collector	M06A407-1		1
7	Motor			2



### Counter weight assembly unit

Item	Description	Part NO.	Q'ty
1	Spindle set	M081001	1
2	Column	M082001	1
3	Counter weight	M08E001	1
4	Chain wheel set-left side	M08E002	1
5	Chain wheel set-right side	M08E003	1
6	Chain wheels	M08E004	4
7	spindle shaft	M08E005	4
8	Rod	M08E006	2
9	Counter weight bush (one)	M08E007	2
10	Counter weight bush (two)	M08E008	2
11	Counter weight rod fixed plate	M08E009	1
12	Rod fixed block	M08E010	2
13	Chain	M08E011	2
14	Counter weight guide way	M08E012	1
15	Counter weight guide way fixed plate	M08E013	1
16	Ball bearing 6206Z	S1100-62060010	4
17	SS28-C buckle	S1214-00102800	4

