

Mechanical Drawings & Parts Breakdown List

Note: When ordering parts, please be prepared with,

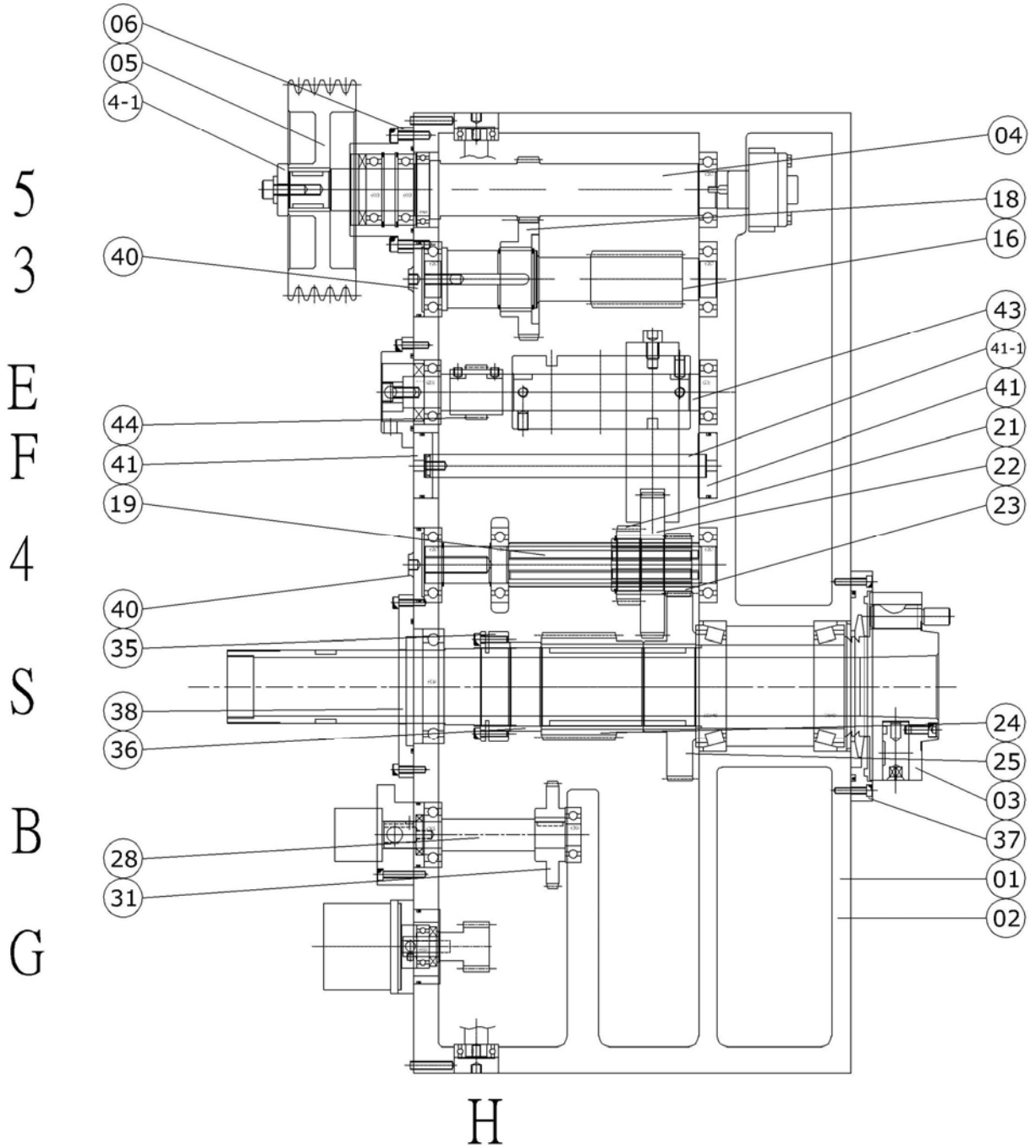
1. Machine model & serial number.
2. Item number.
3. Part number and description.
4. Year of Production.
5. Voltage & horsepower.
6. Quantity

8. PARTS LIST

8.1 HEADSTOCK

8.1.1 18" HB, SPINDLE BORE 56MM (2")

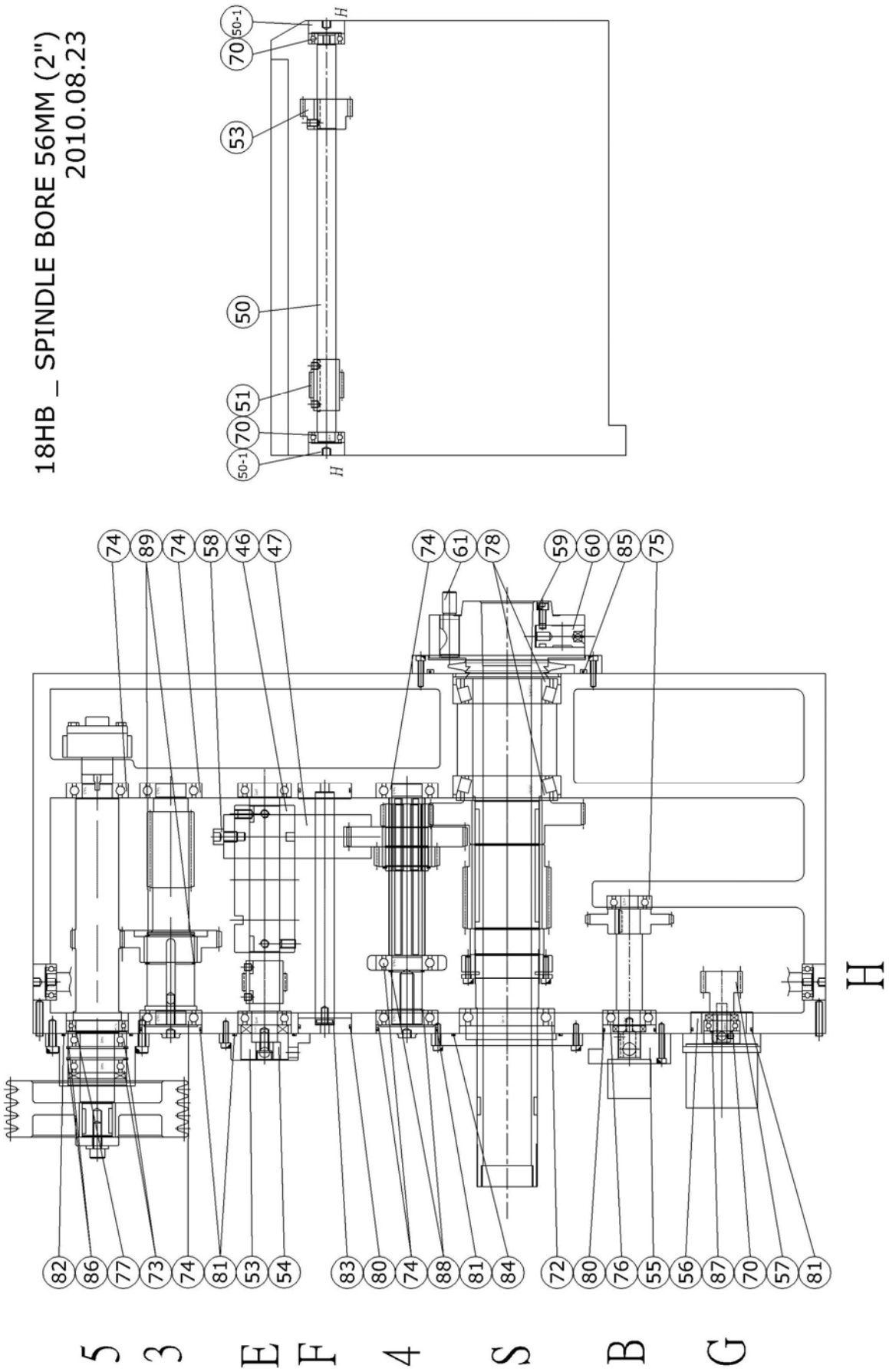
2010.08.23



Parts list of 18” Headstock, Spindle bore 56mm (2”)

No.	PARTS NO.	DESCRIPTION	Q'TY	NOTE
1	18HB-001000	Headstock	1	
2	25HA-002000	Cover	1	
3	25HA-0030D0	Spindle	1	
	25HA-0030A0	Spindle	1	
4	18HB-0041A0	Pulley Shaft	1	
4-1	18HA-004100	Washer	1	
5	18HA-0052A0	V-Pulley	1	
6	18HA-006A00	Cover	1	
16	18HA-016000	Gear Shaft	1	
18	18HA-018000	Gear	1	
19	18HA-019000	Splined Shaft	1	
21	18HA-021000	Gear	1	
22	18HA-022000	Gear	1	
23	18HA-023000	Gear	1	
24	18HA-024000	Gear	1	
25	18HA-025000	Gear	1	
28	18HB-014100	Shaft	1	
	18HB-014200	Shaft	1	Opt.
	18HB-014500	Shaft	1	Opt.
31	18HA-031000	Gear	1	
35	18HA-035000	Clocker Nut	1	
36	18HA-036000	Collar	1	
37	18HA-037001	Cover	1	
38	18HA-038000	Cover	1	
40	18HA-040000	Cover	2	
41	18HA-041000	Cover	2	
41-1	18HA-041100	Idle Axle	1	
43	18HB-017000	Shaft	1	
44	18HB-021000	Bevel Gear	1	

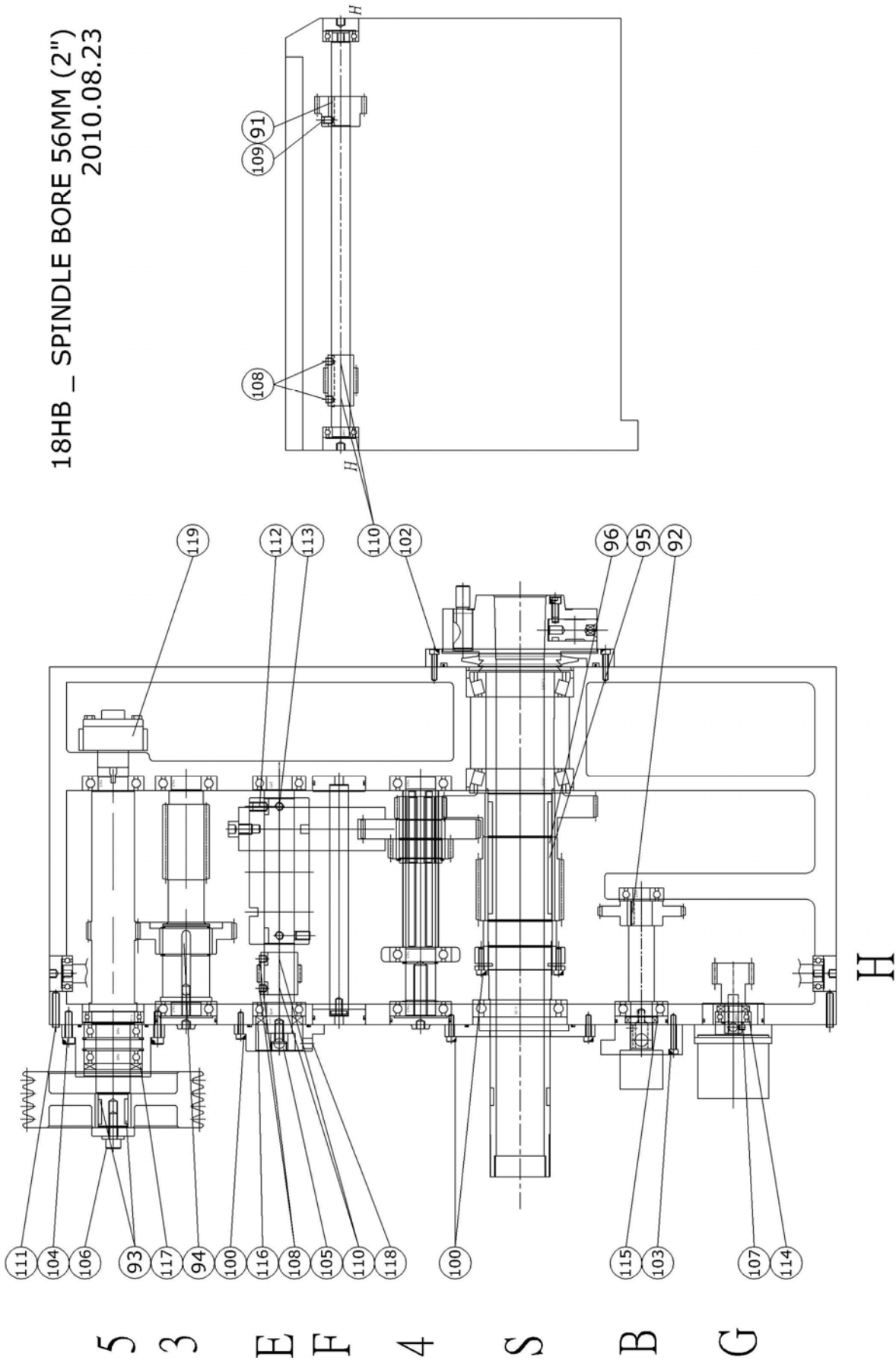
18HB _ SPINDLE BORE 56MM (2")
2010.08.23



Parts list of 18” Headstock, Spindle bore 56mm (2”)

No.	PARTS NO.	DESCRIPTION	Q'TY	NOTE
46	18HB-022000	Cam	1	
47	18HB-023000	Speed Change Fork	1	
50	25HB-024000	Shaft	1	
50-1	18HB-024100	Stuff	2	
51	18HB-025000	Worm Gear	1	
52	18HB-026000	Bevel Gear	1	
53	18HB-020000	Transferring Post	1	
54	18HB-019000	Block	1	
55	18HB-015000	Cover	1	
56	18HB-028002	Cover	1	
57	18HB-027002	Worm Gear	1	
58	18HB-048000	Screw	1	
59	18HA-074000	Screw	6	
60	18HA-075000	Cam	6	
61	18HA-076000	Short Shaft	6	
70	Bearing	6004	3	
71	Bearing	6008	2	
72	Bearing	6014Z	1	
73	Bearing	6206	2	
74	Bearing	6207	6	
75	Bearing	6304	1	
76	Bearing	6305	1	
77	Bearing	6910	1	
78	Tapered Roller Bearing	32016	2	
80	O-Ring	G55	2	
81	O-Ring	G65	4	
82	O-Ring	G75	1	
83	O-Ring	P18	1	
84	O-Ring	G120	1	
85	O-Ring	G170	1	
86	C-Locker	R68	2	
87	C-Locker	S20	1	
88	C-Locker	S35	2	
89	C-Locker	S55	2	

18HB _ SPINDLE BORE 56MM (2")
2010.08.23



5 3 E F 4 S B G H

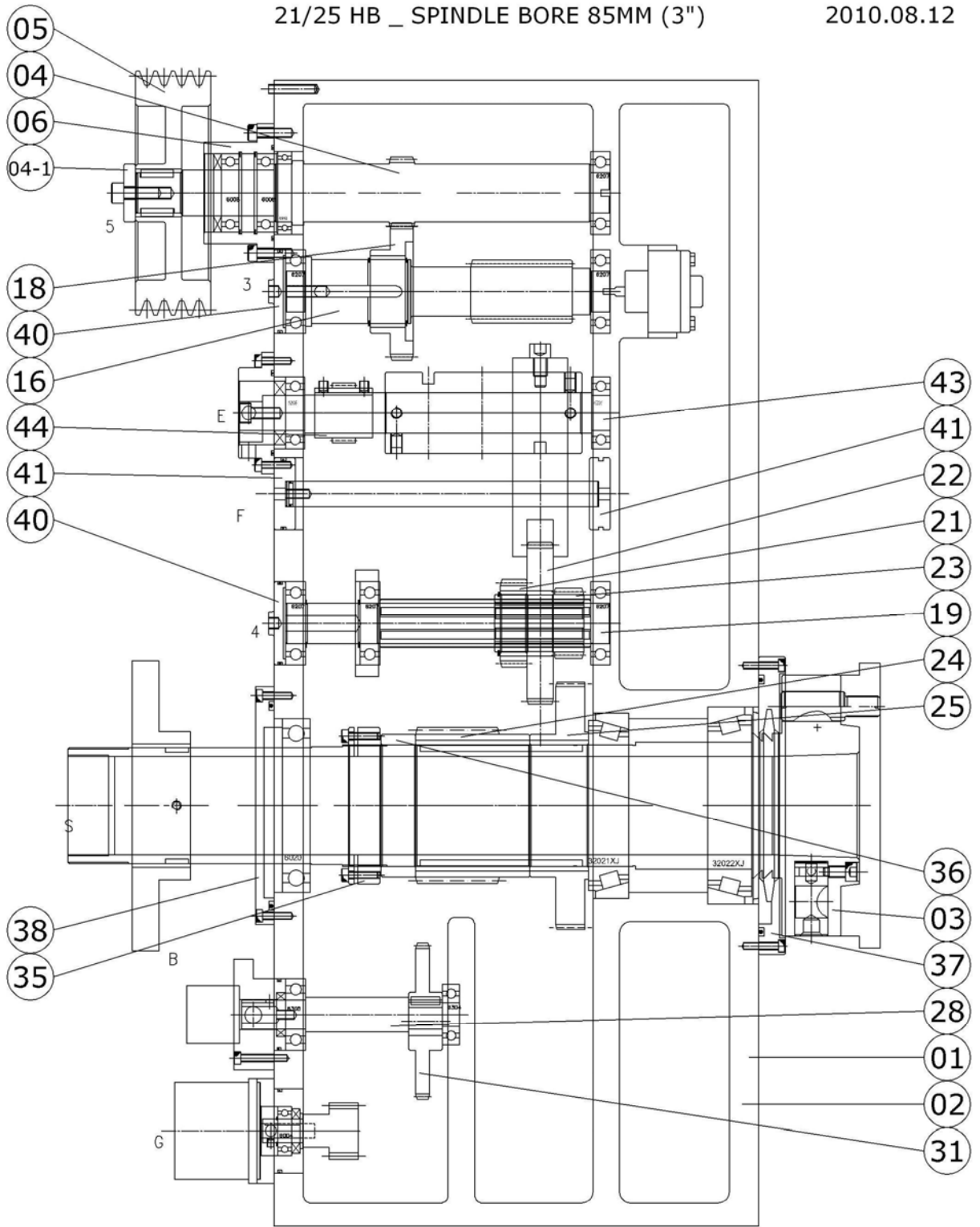
Parts list of 18” Headstock, Spindle bore 56mm (2”)

No.	PARTS NO.	DESCRIPTION	Q'TY	NOTE
91	Key	6*6*28	1	
92	Key	8*7*25	1	
93	Key	8*7*28	2	
94	Key	10*8*25	2	
95	key	10*8*60	2	
96	Key	10*8*70	2	
100	Cap Screw	M6*25	12	
102	Cap Screw	M6*30	6	
103	Cap Screw	M6*40	3	
104	Cap Screw	M8*30	4	
105	Cap Screw	M10*20	1	
106	Cap Screw	M10*30	1	
107	Set Screw	M6*6	1	
108	Set Screw	M8*8	4	
109	Set Screw	M8*10	1	
110	Set Screw	M8*18	4	
111	Set Screw	M8*40	1	
112	Set Screw	M10*10	4	
113	Set Screw	M10*16	2	
114	Oil Seal	20*38*7	1	
115	Oil Seal	25*38*8	1	
116	Oil Seal	30*55*10	1	
117	Oil Seal	40*68*7	1	
118	Sensor		3	
119	Oil Pump		1	

8.1.2 21”/25” HB, SPINDLE BORE 85MM (3”)

21/25 HB _ SPINDLE BORE 85MM (3”)

2010.08.12

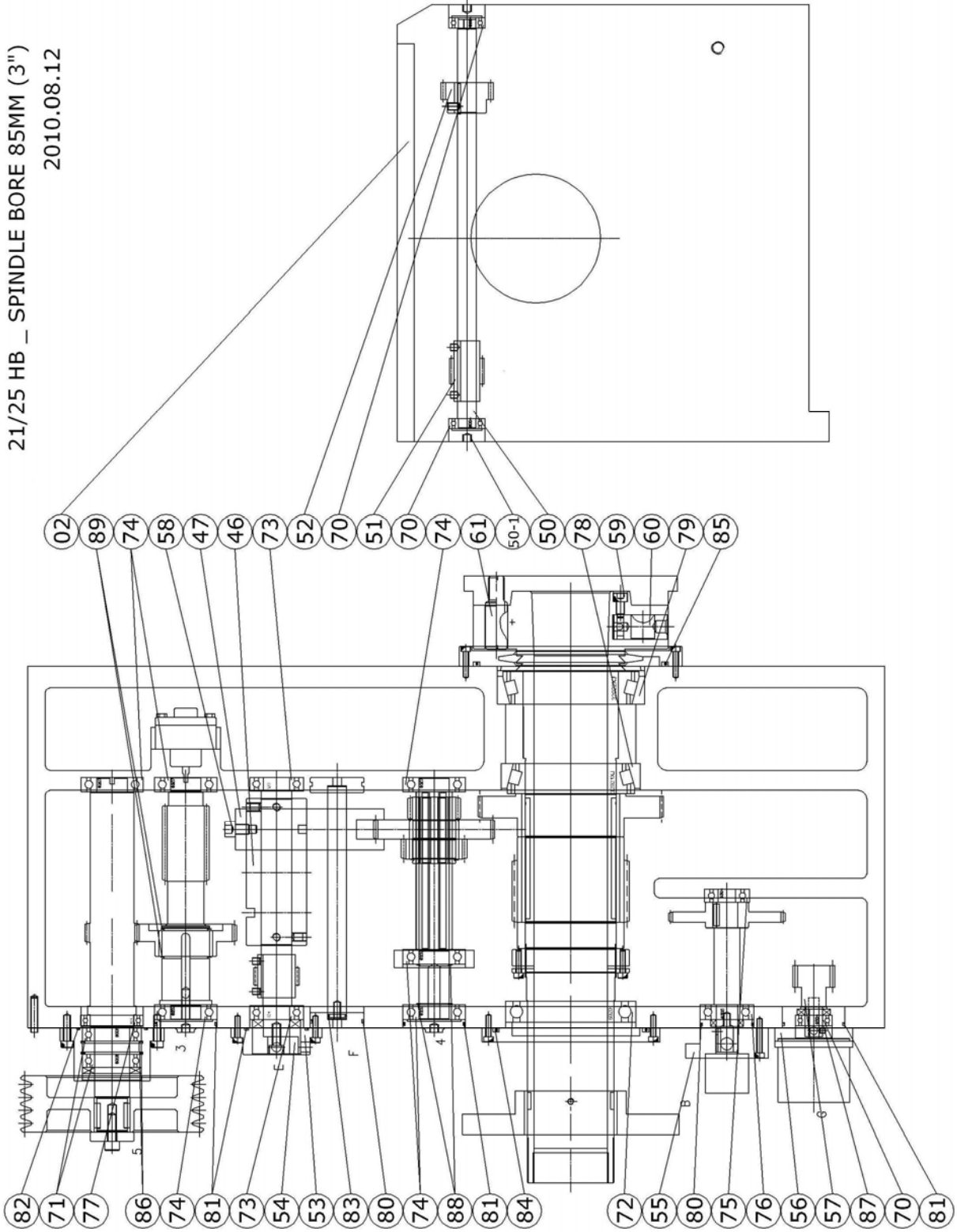


Parts list of 21"/25" Headstock, Spindle bore 85mm (3")

No.	PARTS NO.	DESCRIPTION	Q'TY	NOTE
1	21HB-001000	Headstock	1	
	25HB-001000	Headstock	1	
2	25HA-002000	Cover	1	
3	25HA-0030D0	Spindle	1	
	25HA-0030A0	Spindle	1	Opt.
4	18HB-0041A0	Pulley Shaft	1	
4-1	18HA-004100	Washer	1	
5	18HA-0051A0	V-Pulley	1	
6	18HA-006A00	Cover	1	
16	18HA-016000	Gear Shaft	1	
18	18HA-018000	Gear	1	
19	18HA-019000	Splined Shaft	1	
21	18HA-021000	Gear	1	
22	18HA-022000	Gear	1	
23	18HA-023000	Gear	1	
24	25HA-024000	Gear	1	
25	25HA-025000	Gear	1	
28	18HB-014100	Shaft	1	Opt.
	18HB-014200	Shaft	1	Opt.
	18HB-014500	Shaft	1	Opt.
31	25HB-031000	Gear	1	
35	25HA-035000	Clocker Nut	1	
36	25HA-036000	Collar	1	
37	25HA-037001	Cover	1	
38	25HA-038000	Cover	1	
40	18HA-040000	Cover	2	
41	18HA-041000	Cover	2	
43	18HB-017000	Shaft	1	
44	18HB-021000	Bevel Gear	1	

21/25 HB _ SPINDLE BORE 85MM (3")

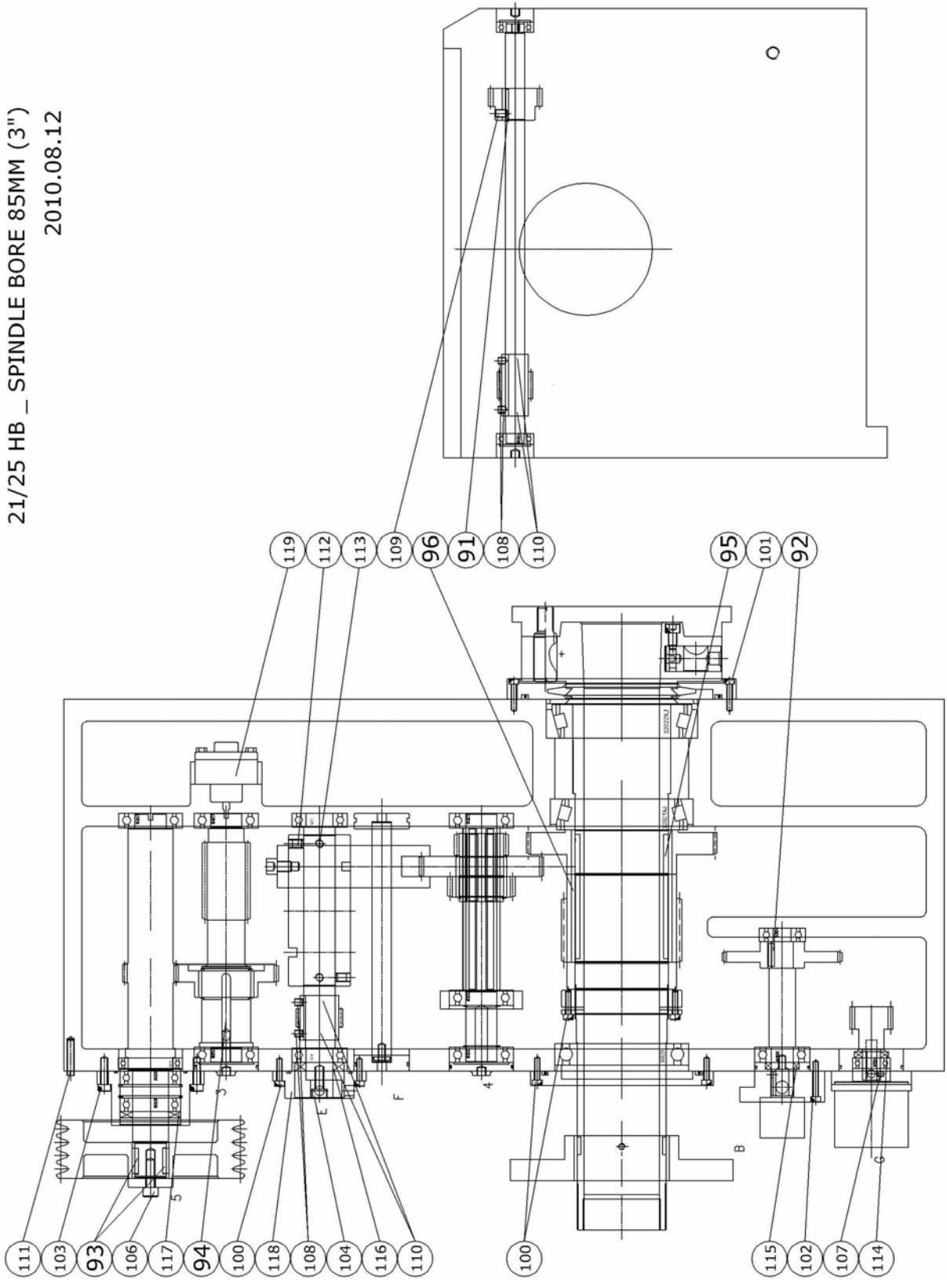
2010.08.12



Parts list of 21"/25" Headstock, Spindle bore 85mm (3")

No.	PARTS NO.	DESCRIPTION	Q'TY	NOTE
46	18HB-022000	Cam	1	
47	18HB-023000	Speed Change Fork	1	
50	25HB-024000	Shaft	1	
50-1	18HB-024100	Stuff	2	
51	18HB-025000	Worm Gear	1	
52	18HB-026000	Bevel Gear	1	
53	18HB-020000	Transferring Post	1	
54	18HB-019000	Block	1	
55	18HB-015000	Cover	1	
56	18HB-028001	Cover	1	
57	18HB-027000	Worm Gear	1	
58	18HB-048000	Screw	1	
59	25HA-074000	Screw	6	
60	25HA-075000	Cam	6	
61	25HA-076000	Short Shaft	6	
70	Bearing	6004	3	
71	Bearing	6008	2	
72	Bearing	6020Z	1	
73	Bearing	6206	2	
74	Bearing	6207	6	
75	Bearing	6304	1	
76	Bearing	6305	1	
77	Bearing	6910	1	
78	Tapered Roller Bearing	32021	1	
79	Tapered Roller Bearing	32022	1	
80	O-Ring	G55	2	
81	O-Ring	G65	4	
82	O-Ring	G75	1	
83	O-Ring	P18	1	
84	O-Ring	G165	1	
85	O-Ring	G210	1	
86	C-Locker	R68	2	
87	C-Locker	S20	1	
88	C-Locker	S35	2	
89	C-Locker	S55	2	

21/25 HB _ SPINDLE BORE 85MM (3")
2010.08.12



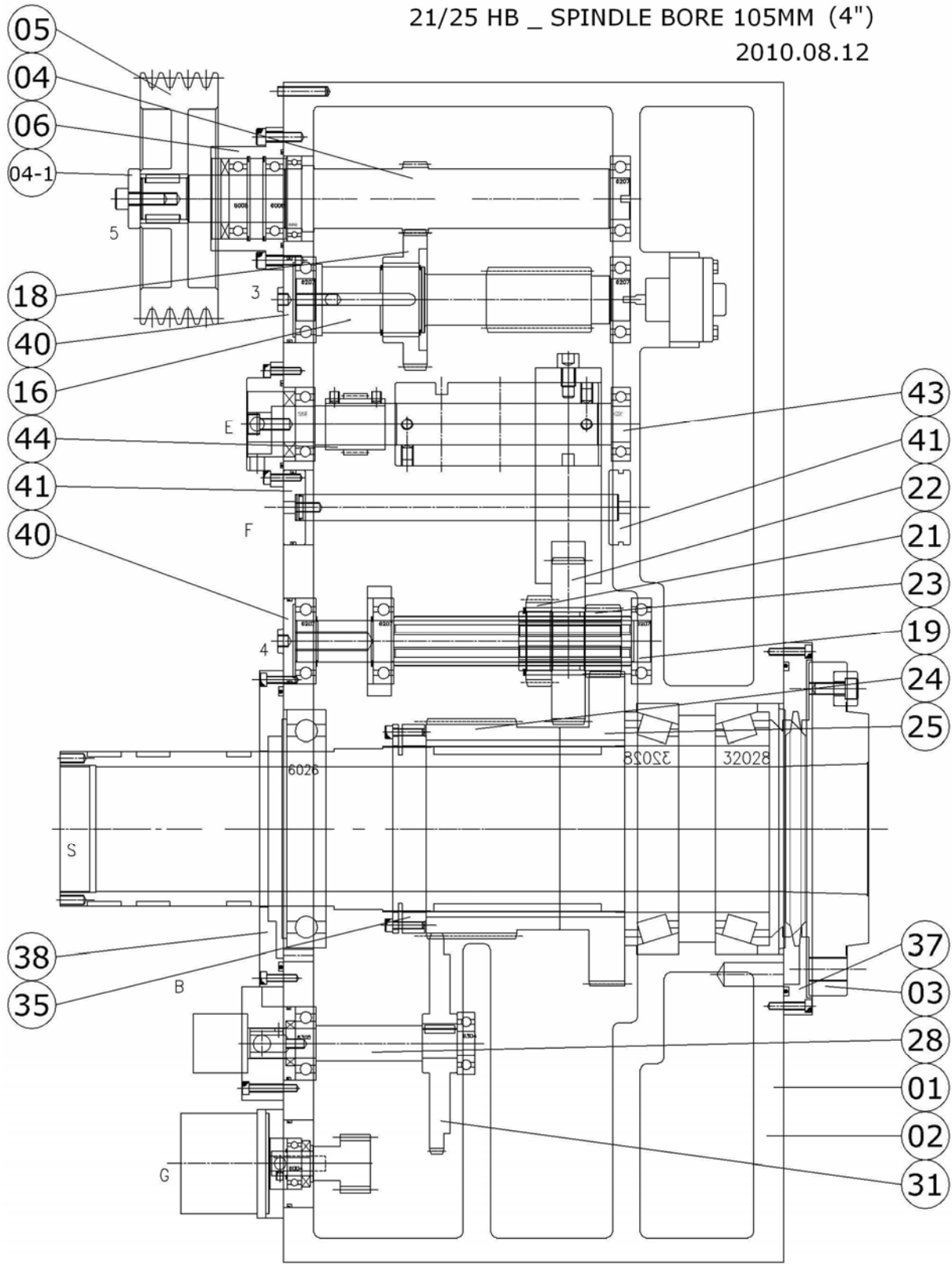
Parts list of 21"/25" Headstock, Spindle bore 85mm (3")

No.	PARTS NO.	DESCRIPTION	Q'TY	NOTE
91	Key	6*6*28	1	
92	Key	8*7*25	1	
93	Key	8*7*28	2	
94	Key	10*8*25	2	
95	key	14*9*60	2	
96	Key	14*9*80	2	
100	Cap Screw	M6*25	15	
102	Cap Screw	M6*40	3	
103	Cap Screw	M8*30	4	
104	Cap Screw	M10*20	1	
105	Cap Screw	M10*25	1	
106	Cap Screw	M10*30	1	
107	Set Screw	M6*6	1	
108	Set Screw	M8*8	4	
109	Set Screw	M8*10	1	
110	Set Screw	M8*18	4	
111	Set Screw	M8*40	1	
112	Set Screw	M10*10	4	
113	Set Screw	M10*16	2	
114	Oil Seal	20*38*7	1	
115	Oil Seal	25*38*8	1	
116	Oil Seal	30*55*10	1	
117	Oil Seal	40*68*7	1	
118	Sensor		3	
119	Oil Pump		1	

8.1.3 21”/25” HB, SPINDLE BORE 105MM (4”) OPTION

21/25 HB _ SPINDLE BORE 105MM (4")

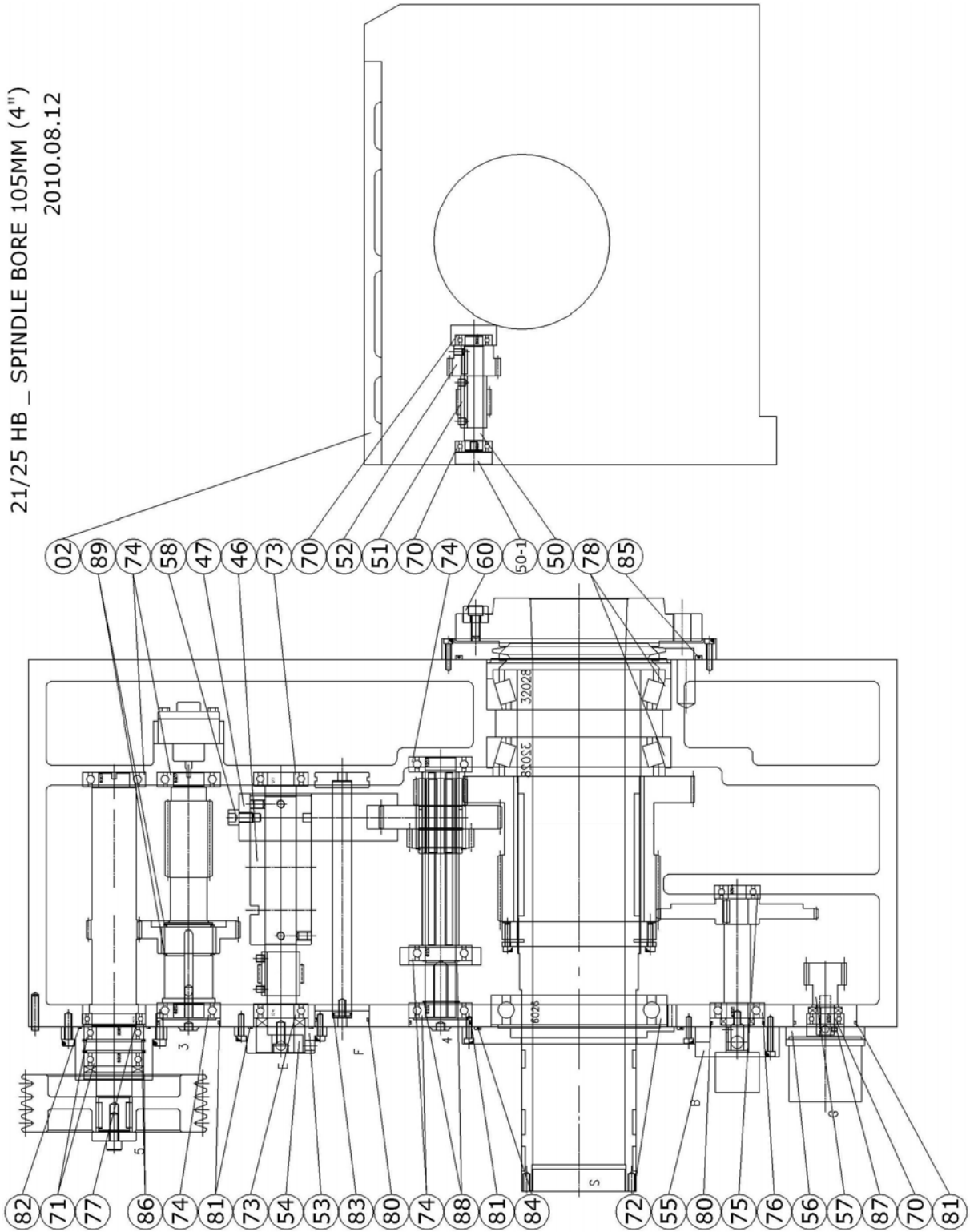
2010.08.12



Parts list of 21”/25” Headstock, Spindle bore 105mm (4”)

No.	PARTS NO.	DESCRIPTION	Q'TY	NOTE
1	21HB-401000	Headstock	1	Opt.
	25HB-401000	Headstock	1	Opt.
2	25HA-002000	Cover	1	
3	25HA-4030D0	Spindle	1	
	25HA-4030A0	Spindle	1	Opt.
4	18HB-0041A0	Pulley Shaft	1	
4-1	18HA-004100	Washer	1	
5	18HA-0051A0	V-Pulley	1	
6	18HA-006A00	Cover	1	
16	18HA-016000	Gear Shaft	1	
18	18HA-018000	Gear	1	
19	25HA-419000	Splined Shaft	1	
21	25HA-421000	Gear	1	
22	25HA-422000	Gear	1	
23	25HA-423000	Gear	1	
24	25HA-424000	Gear	1	
25	25HA-425000	Gear	1	
28	18HB-014100	Shaft	1	Opt.
	18HB-014200	Shaft	1	Opt.
	18HB-014500	Shaft	1	Opt.
31	25HB-431000	Gear	1	
35	25HA-435000	Clocker Nut	1	
37	25HA-4370A1	Cover	1	
	25HA-4370D0	Cover	1	
38	25HA-438000	Cover	1	
40	18HA-040000	Cover	2	
41	18HA-041000	Cover	2	
43	18HB-017000	Shaft	1	
44	18HB-021000	Bevel Gear	1	

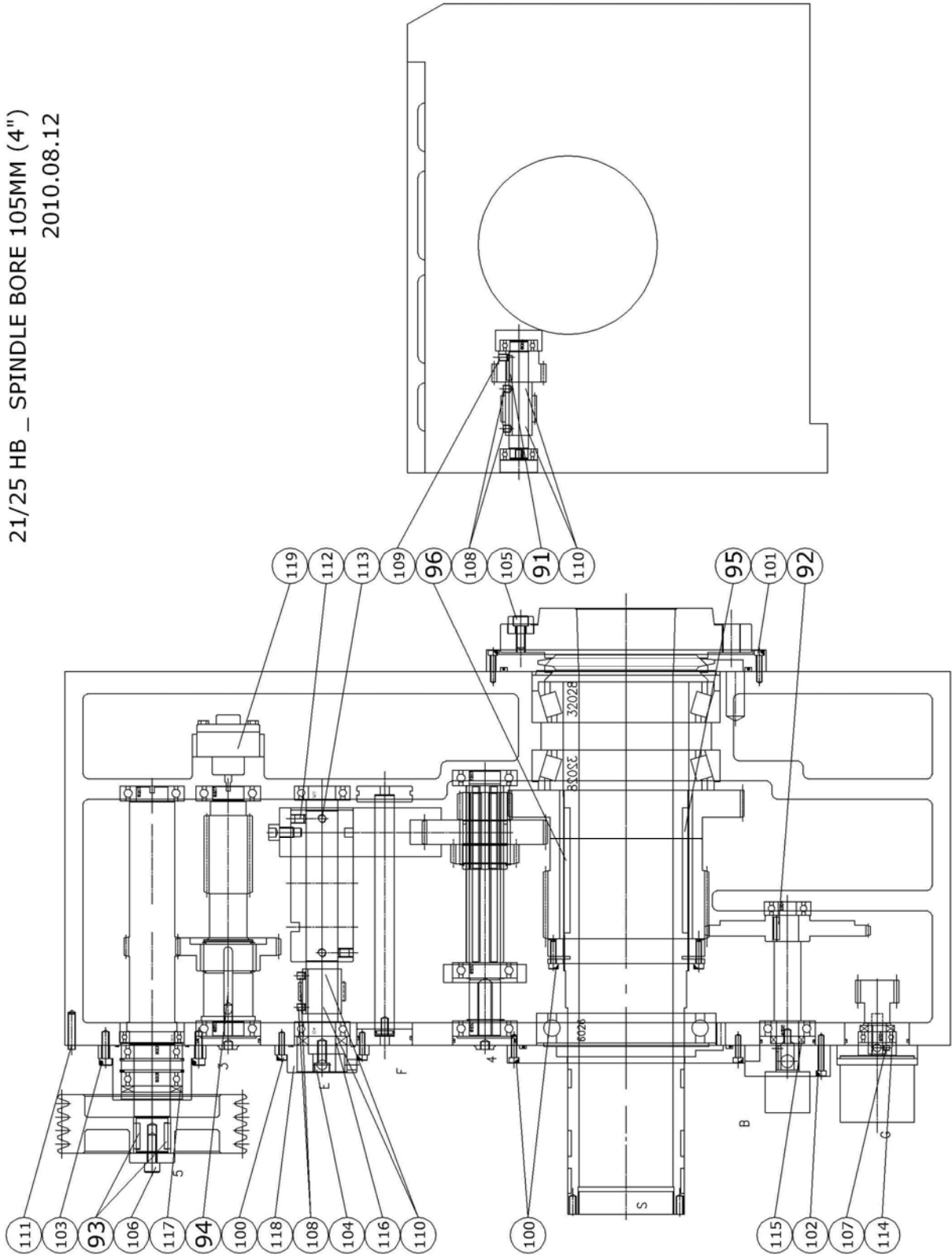
21/25 HB _ SPINDLE BORE 105MM (4")
 2010.08.12



Parts list of 21"/25" Headstock, Spindle bore 105mm (4")

No.	PARTS NO.	DESCRIPTION	Q'TY	NOTE
46	25HB-422000	Cam	1	
47	25HB-423000	Speed Change Fork	1	
50	25HB-424000	Shaft	1	
50-1	18HB-024100	Stuff	1	
51	18HB-025000	Worm Gear	1	
52	18HB-026000	Bevel Gear	1	
53	18HB-020000	Transferring Post	1	
54	18HB-019000	Block	1	
55	18HB-015000	Cover	1	
56	18HB-028001	Cover	1	
57	18HB-027000	Worm Gear	1	
58	18HB-048000	Screw	1	
60	25HA-483000	Fixed Block	1	
70	Bearing	6004	3	
71	Bearing	6008	2	
72	Bearing	6026	1	
73	Bearing	6206	2	
74	Bearing	6207	6	
75	Bearing	6304	1	
76	Bearing	6305	1	
77	Bearing	6910	1	
78	Tapered Roller Bearing	32028	2	
80	O-Ring	G55	2	
81	O-Ring	G65	4	
82	O-Ring	G75	1	
83	O-Ring	P18	1	
84	O-Ring		1	
85	O-Ring		1	
86	C-Locker	R68	2	
87	C-Locker	S20	1	
88	C-Locker	S35	2	
89	C-Locker	S55	2	

21/25 HB _ SPINDLE BORE 105MM (4")
2010.08.12

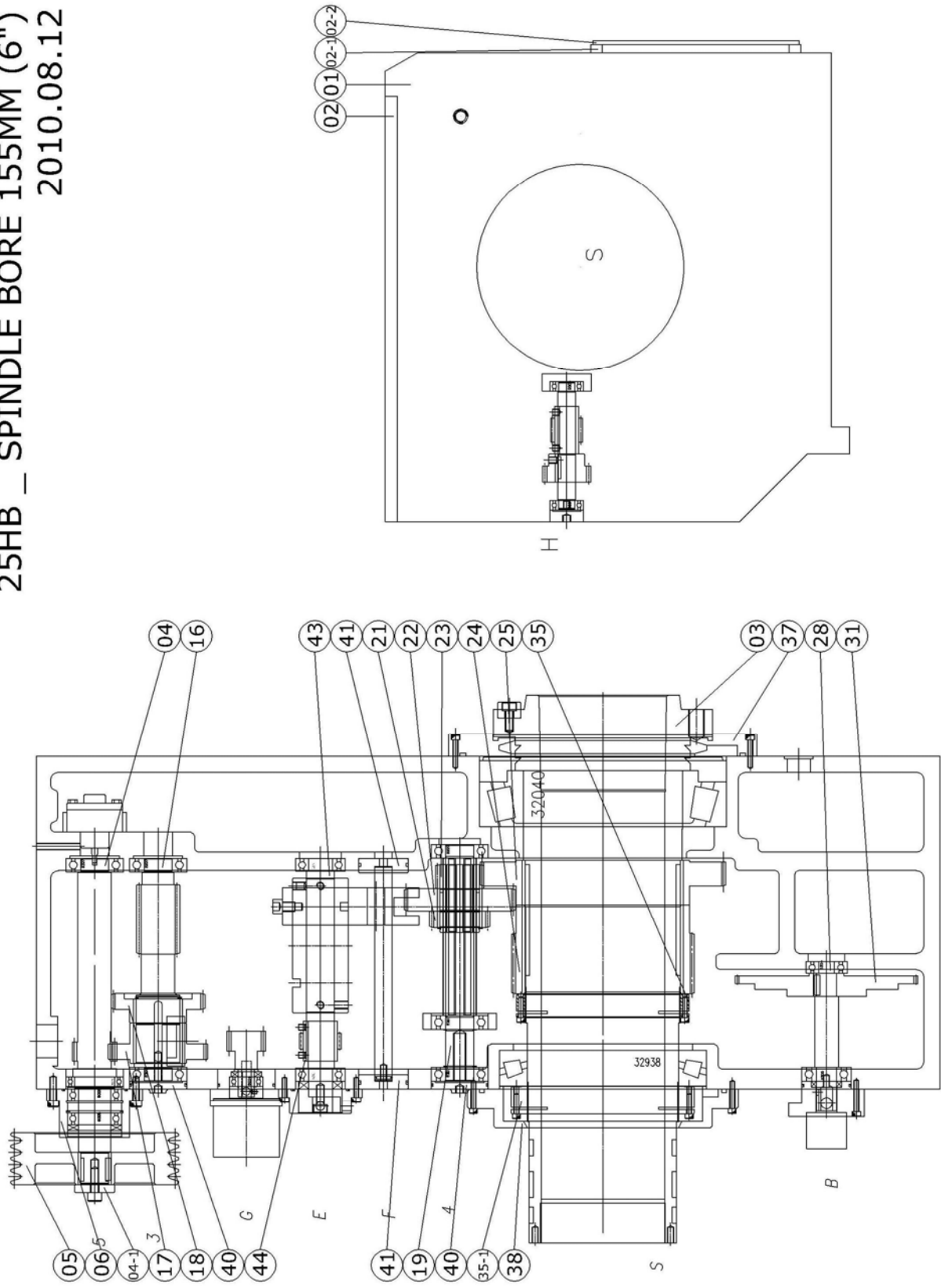


Parts list of 21"/25" Headstock, Spindle bore 105mm (4")

No.	PARTS NO.	DESCRIPTION	Q'TY	NOTE
91	Key	6*6*28	1	
92	Key	8*7*25	1	
93	Key	8*7*28	2	
94	Key	10*8*25	2	
95	key	18*11*60	2	
96	Key	18*11*80	2	
100	Cap Screw	M6*25	12	
101	Cap Screw	M6*30	6	
102	Cap Screw	M6*40	3	
103	Cap Screw	M8*30	4	
104	Cap Screw	M10*20	1	
105	Cap Screw	M10*25	1	
106	Cap Screw	M10*30	1	
107	Set Screw	M6*6	1	
108	Set Screw	M8*8	4	
109	Set Screw	M8*10	1	
110	Set Screw	M8*18	4	
111	Set Screw	M8*40	1	
112	Set Screw	M10*10	4	
113	Set Screw	M10*16	2	
114	Oil Seal	20*38*7	1	
115	Oil Seal	25*38*8	1	
116	Oil Seal	30*55*10	1	
117	Oil Seal	40*68*7	1	
118	Sensor		3	
119	Oil Pump		1	

8.1.4 25" HB, SPINDLE BORE 155MM (6") OPTION

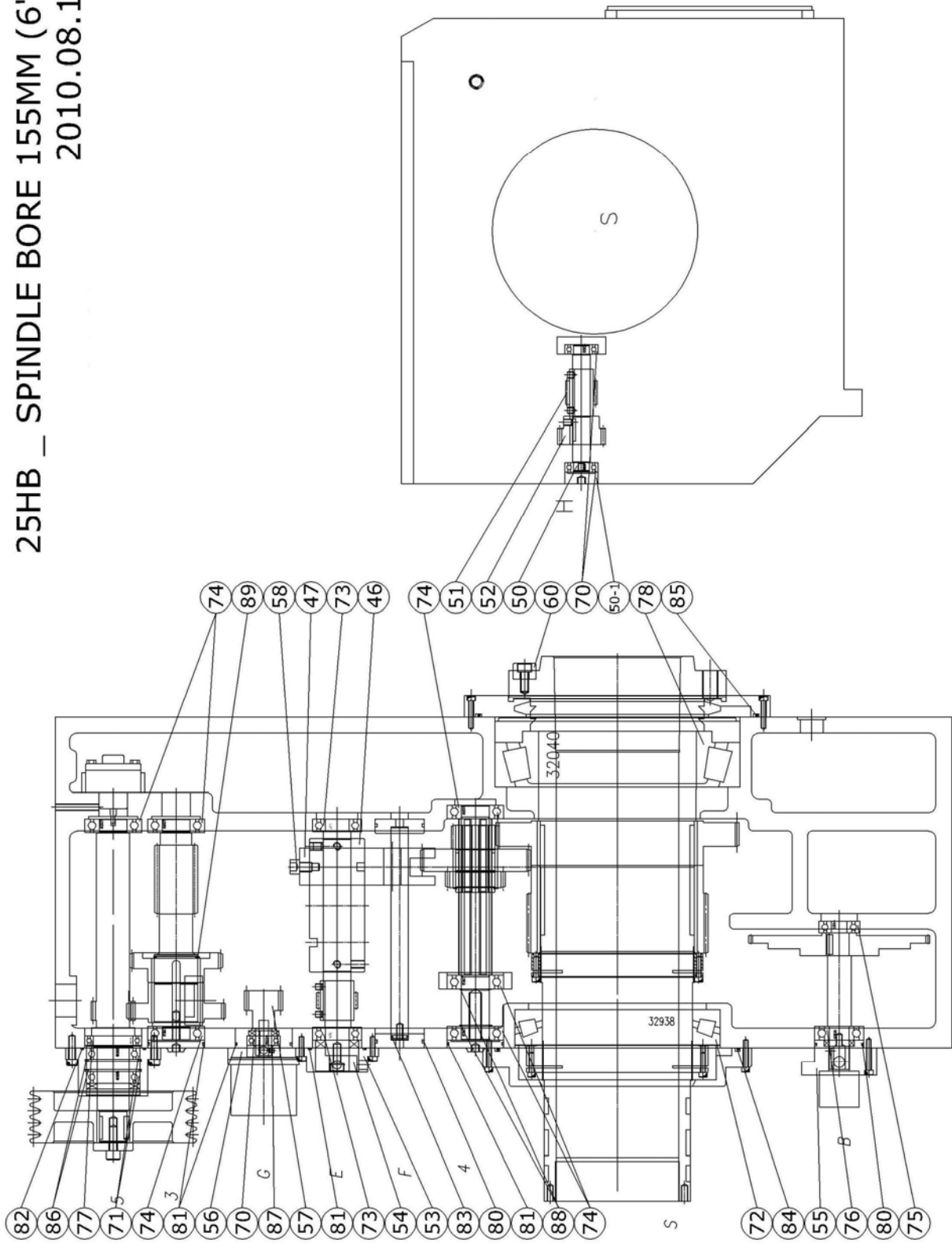
25HB _ SPINDLE BORE 155MM (6")
2010.08.12



Parts list of 25" Headstock, Spindle bore 155mm (6")

No.	PARTS NO.	DESCRIPTION	Q'TY	NOTE
1	25HB-601000	Headstock	1	Opt.
2	25HA-602000	Cover	1	
2-1	25HA-602100	Cover	1	
2-2	25HA-602200	Cover	1	
3	25HA-6030A0	Spindle	1	
4	25HC-6041A0	Pulley Shaft	1	
4-1	18HA-004100	Washer	1	
5	18HA-0051A0	V-Pulley	1	
6	18HA-006A00	Cover	1	
16	18HA-016000	Gear Shaft	1	
17	25HC-617000	Gear	1	
18	18HA-018000	Gear	1	
19	25HA-419000	Splined Shaft	1	
21	25HA-421000	Gear	1	
22	25HA-422000	Gear	1	
23	25HA-423000	Gear	1	
24	25HA-624000	Gear	1	
25	25HA-625000	Gear	1	
28	18HB-014100	Shaft	1	Opt.
	18HB-014200	Shaft	1	Opt.
	18HB-014500	Shaft	1	Opt.
31	25HB-631000	Gear	1	
35	25HA-635000	Clocker Nut	1	
35-1	25HA-635100	Clocker Nut	1	
37	25HA-6370A1	Cover	1	
38	25HA-638000	Cover	1	
40	18HA-040000	Cover	2	
41	18HA-041000	Cover	2	
43	18HB-017000	Shaft	1	
44	18HB-021000	Bevel Gear	1	

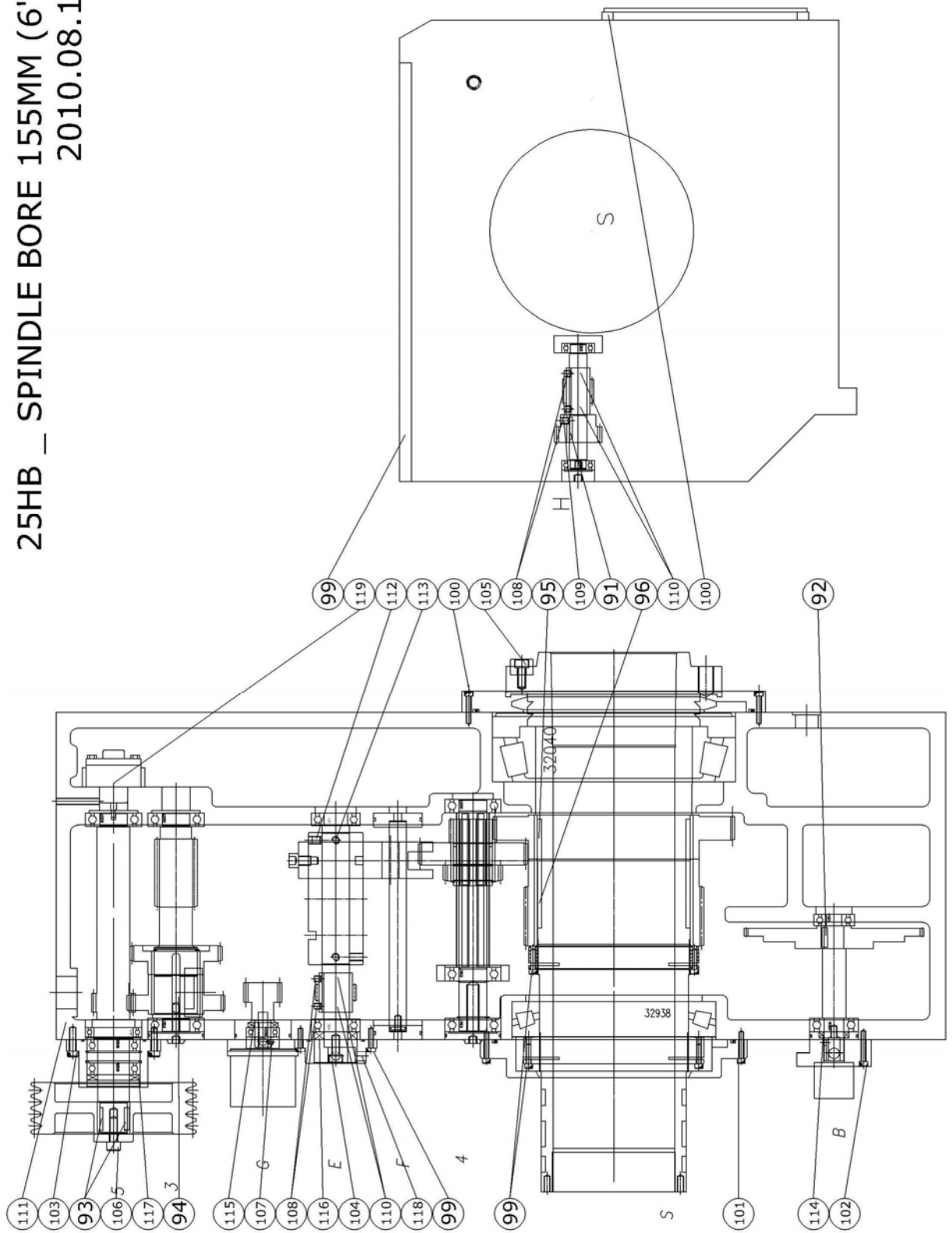
25HB _ SPINDLE BORE 155MM (6")
2010.08.12



Parts list of 25" Headstock, Spindle bore 155mm (6")

No.	PARTS NO.	DESCRIPTION	Q'TY	NOTE
46	25HB-422000	Cam	1	
47	25HB-423000	Speed Change Fork	1	
50	25HB-624000	Shaft	1	
50-1	18HB-024100	Spacer	1	
51	18HB-025000	Worm Gear	1	
52	18HB-026000	Bevel Gear	1	
53	18HB-020000	Transferring Post	1	
54	18HB-019000	Block	1	
55	18HB-015000	Cover	1	
56	18HB-028001	Cover	1	
57	18HB-027000	Worm Gear	1	
58	18HB-048000	Screw	1	
60	25HA-483000	Fixed Block	1	
70	Bearing	6004	3	
71	Bearing	6008	2	
72	Tapered Roller Bearing	32938	1	
73	Bearing	6206	2	
74	Bearing	6207	6	
75	Bearing	6304	1	
76	Bearing	6305	1	
77	Bearing	6910	1	
78	Tapered Roller Bearing	32040	1	
80	O-Ring	G55	2	
81	O-Ring	G65	4	
82	O-Ring	G75	1	
83	O-Ring	P18	1	
84	O-Ring		1	
85	O-Ring		1	
86	C-Locker	R68	2	
87	C-Locker	S20	1	
88	C-Locker	S35	2	
89	C-Locker	S55	1	

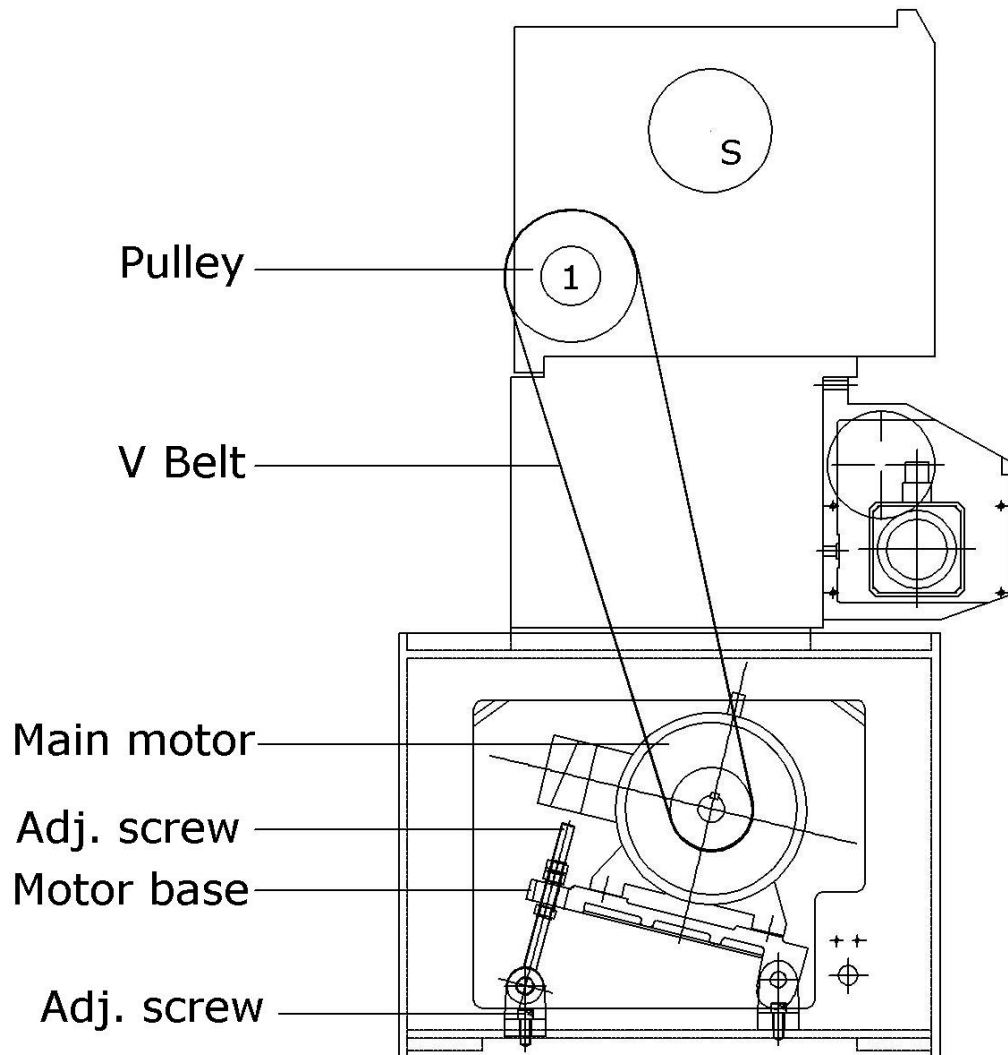
25HB _ SPINDLE BORE 155MM (6")
2010.08.12



Parts list of 25" Headstock, Spindle bore 155mm (6")

No.	PARTS NO.	DESCRIPTION	Q'TY	NOTE
91	Key	6*6*28	1	
92	Key	8*7*25	1	
93	Key	8*7*28	2	
94	Key	10*8*25	2	
95	key	18*11*60	2	
96	Key	18*11*70	2	
99	Cap Screw	M6*25	15	
100	Cap Screw	M6*30	18	
101	Cap Screw	M6*35	8	
102	Cap Screw	M6*40	3	
103	Cap Screw	M8*30	4	
104	Cap Screw	M10*20	1	
105	Cap Screw	M10*25	1	
106	Cap Screw	M10*30	1	
107	Set Screw	M6*6	1	
108	Set Screw	M8*8	4	
109	Set Screw	M8*10	1	
110	Set Screw	M8*18	4	
111	Set Screw	M8*40	1	
112	Set Screw	M10*10	4	
113	Set Screw	M10*16	2	
114	Oil Seal	20*38*7	1	
115	Oil Seal	25*38*8	1	
116	Oil Seal	30*55*10	1	
117	Oil Seal	40*68*7	1	
118	Sensor		3	
119	Oil Pump		1	

8.2 MAIN SPINDLE TRANSMISSION

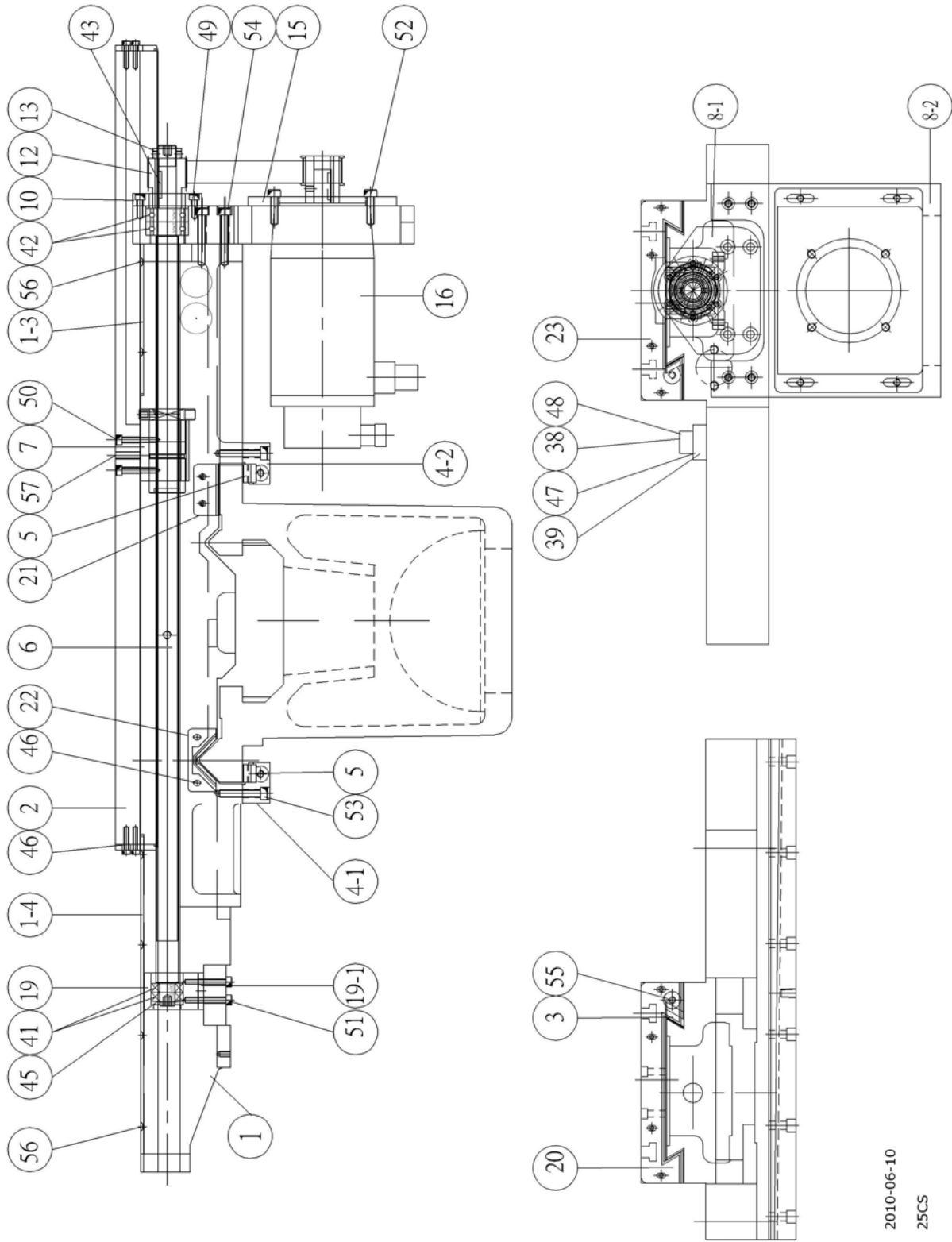


Parts list of main spindle transmission.

No.	PARTS NO.	DESCRIPTION	Q'TY	NOTE
1		Pulley	1	
2		V belt	4	
3		Motor	1	
4		ADJ. screw	1	
5		Motor Base	1	
6		ADJ. screw	1	

Different models will have different part numbers. When ordering, please specify HP, spindle bore size, and model number. Thanks for helping!

8.3 CARRIAGE & CROSS SLIDE



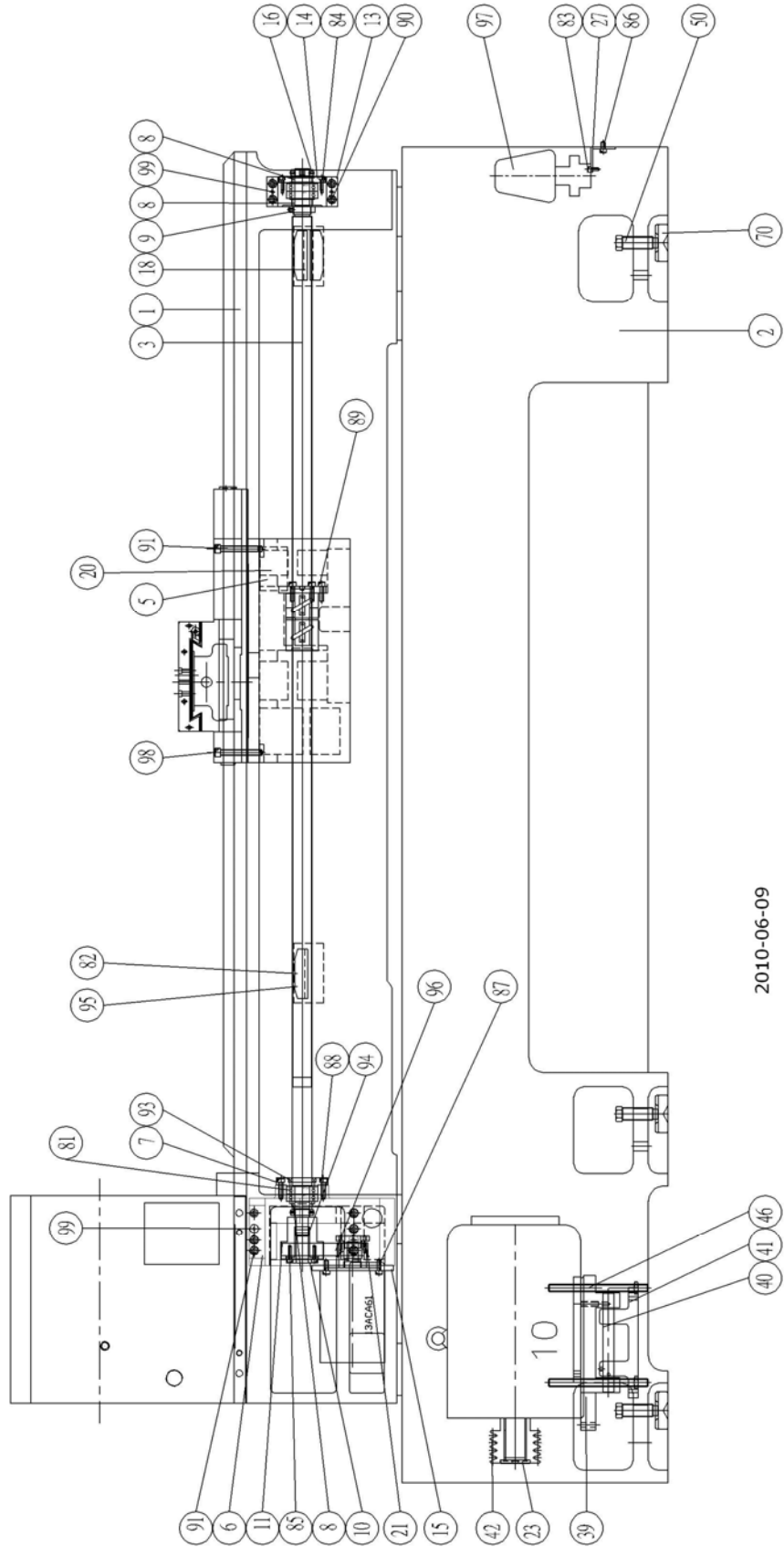
Parts list of Carriage & Cross slide

No.	PARTS NO.	DESCRIPTION	Q'T Y	NOTE
001	25CS-001000	Carriage	1	
001-3	25CS-001300	Cover	1	
001-4	25CS-001400	Cover	1	
002	25CS-002100	Cross Slide	1	
003	25CS-003000	Gib	1	
004-1	25CS-004100	Gib Plate(Front)	1	
004-2	25CS-004200	Gib Plate(Back)	1	
005	25CS-005000	Gib	2	
006	25CS-006A00	Ball Screw	1	x-axis
007	25CS-007000	Bracket	1	
008-1	25CS-008100	Ball Screw bracket	1	
008-2	25CS-008200	Motor Bracket	1	
010	25CS-010000	Bearing. Cover	1	
012	25CS-012100	Pulley	1	
013	25CS-013000	Lock Nut	1	
015	25CS-015100	Motor plate	1	
016		Motor	1	
019	25CS-019000	Bearing Block	1	
019-1	25CS-019100	Washer	1	
020	25CS-020000	Wiper	1	
021	25S-029000	Wiper	2	
022	25S-027000	Wiper	2	
023	25CS-023000	Wiper	1	
035	21CS-035100	Turret Base	1	
038		Limit switch - double connection	1	
039		Limit switch - single connection	1	
041		Bearing 6003	2	
042		Bearing 2047	2	
041		Bearing 6003	2	
042		Bearing 2047	2	
043		Key 7*7*28	1	
045		C-Locker S17	1	
046		Half-Screw M5*20	16	
047		Screw M5*30	2	
048		Screw M5*45	2	
049		Screw M6*20	6	

Parts list of Carriage & Cross slide

No.	PARTS NO.	DESCRIPTION	Q'TY	NOTE
050		Screw M6*40	4	
051		Screw M6*45	4	
052		Screw M8*30	4	
053		Screw M8*35	12	
054		Screw M8*55	4	
055	25S-024100	Adj. screw	2	
056		Flat head Screw M4*10	12	
057		Pin dia.5*45	2	

8.4 BED & Z-AXIS TRANSMISSION



Parts list of Bed & Z-axis Transmission

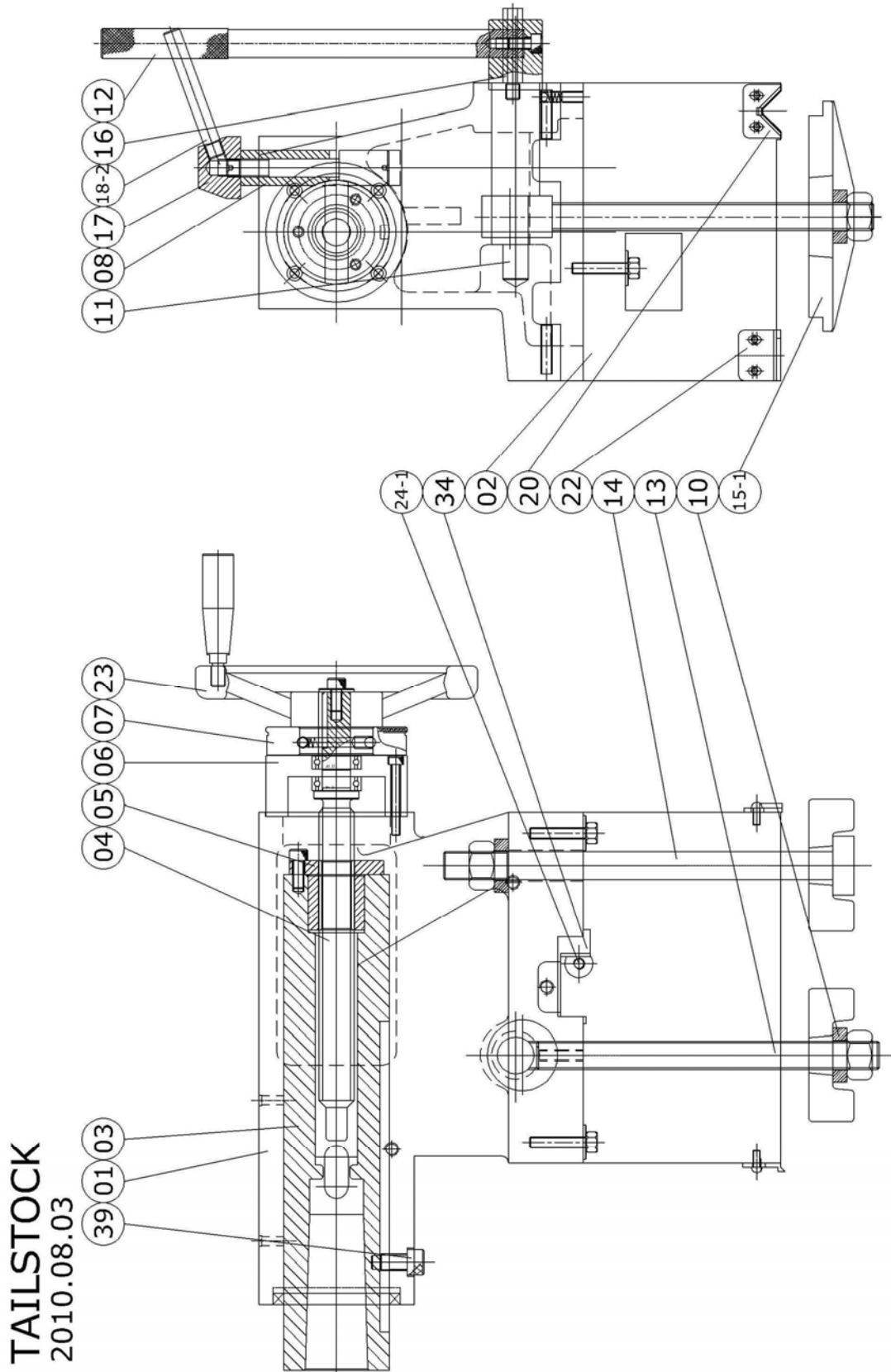
No.	PARTS NO.	DESCRIPTION	Q'TY	NOTE
001	25B-001B00	Bed	1	
002	25B-002B00	Machine Base	1	
003	25CB-003	Ball Screw	1	Z Axis
005	25CB-005000	Bracket	1	
006	25CB-006000	Motor Bracket	1	
007	25CB-007000	Bearing. Cover	1	
008	25CB-008000	Collar	3	
009	25CB-009000	Lock Nut	1	
010	25CB-010000	Snap Cover	1	
011	25CB-011200	Pulley	1	
013	25CB-013000	Bearing. Housing	1	
014	25CB-014000	Bearing. Cover	1	
015	25CS-015200	Base	1	
016	25CB-016000	Lock Nut	2	
018	25CB-018000	Sensor Block	3	
020	25CB-020000	Base	1	
021	25CB-021300	Pulley	1	
023	25B-023000	Washer	1	
027	25B-027000	Pump Frame	1	
039	25B-039000	Motor Base	1	
040	25B-040000	Shaft	1	
041	25B-041000	Base Plate	1	
042	25B-042300	Motor Pulley	1	
046	25B-046000	Adjustment Screw	1	
050	25B-050000	Screw	6	
070	25B-070000	Gasket	6	
081		Bearing 3062	4	
082		Half-Screw M5*10	6	
083		Screw M6*16	2	
084		Screw M6*20	6	
085		Screw M6*25	6	
086		Screw M8*14	2	
087		Screw M8*20	4	
088		Screw M8*25	4	
089		Screw M8*30	5	
090		Screw M10*35	4	

Parts list of Bed & Z-axis Transmission

No.	PARTS NO.	DESCRIPTION	Q'TY	NOTE
091		Screw M10*50	6	
092		Screw M12*75	4	
093		Oil Seal 40*55*8	1	
094		Packing Ring 30*25	3	
095		Spacer M5	6	
096		Belt	1	
097		Coolant Pump	1	
098		Screw	2	
099		Pin		

8.5 TAILSTOCK

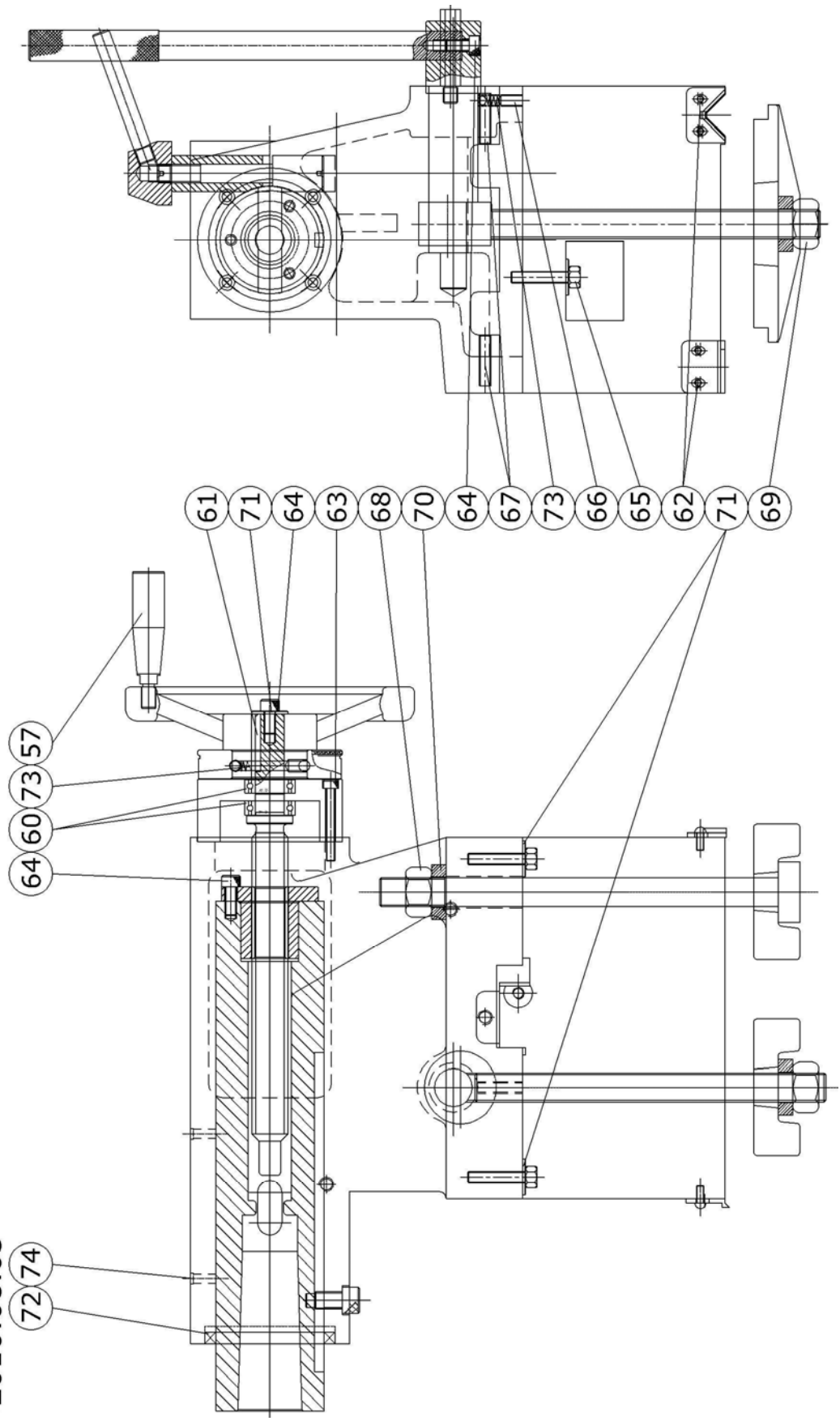
8.5.1 MANUAL TAILSTOCK -18"/21"/25" Tailstock



Parts list of 18"/21"/25" Manual Tailstock

No.	PARTS NO.	DESCRIPTION	Q'TY	NOTE
001	25T-001000	TAILSTOCK BODY	1	H4 TURRET
	25CT-001000	TAILSTOCK BODY	1	V8 TURRET
002	18T-002000	BASE	1	
	21T-002000	BASE	1	
	25T-002000	BASE	1	
003	25T-003000	QUILL	1	
	25T-0040M0	SCREW	1	MM
004	25T-0040I0	SCREW	1	INCH
	25CT-0040M0	SCREW	1	FOR 25CT-001
	25CT-0040I0	SCREW	1	FOR 25CT-001
005	25T-0050M0	NUT	1	MM
	25T-0050I0	NUT	1	INCH
006	25T-006000	BRACKET	1	
007	25T-0070M0	DIAL	1	MM
	25T-0070I0	DIAL	1	INCH
008	25T-008009B	BOSS STUD	1	
010	25T-010000	WASHER	1	
011	25T-011000	ECCENTRIC LOCK STUD	1	
012	25T-012000	LOCKING LEVER	1	
013	18T-013000	CLAMPING BOLT	1	
	21T-013000	CLAMPING BOLT	1	
	25T-013000	CLAMPING BOLT	1	
014	18T-014000	CLAMPING BOLT	1	
	21T-014000	CLAMPING BOLT	1	
	25T-014000	CLAMPING BOLT	1	
015-1	25T-015100	HOLDING DOWN PLATE	2	
016	25T-016000	STOP PIN	1	
017	25T-017000	HEAD BOSS	1	
018-2	25T-018200	HANDLE	1	
020	25T-020000	WIPER	2	
022	25T-022000	WIPER	2	
023	25A-010000	HAND WHEEL	1	
024-1	25S-024100	ADJUSTMENT BOLTS	2	
034	25T-034000	GIB	1	
039	25T-039000	FIXING SCREW	1	

TAILSTOCK
2010.08.03

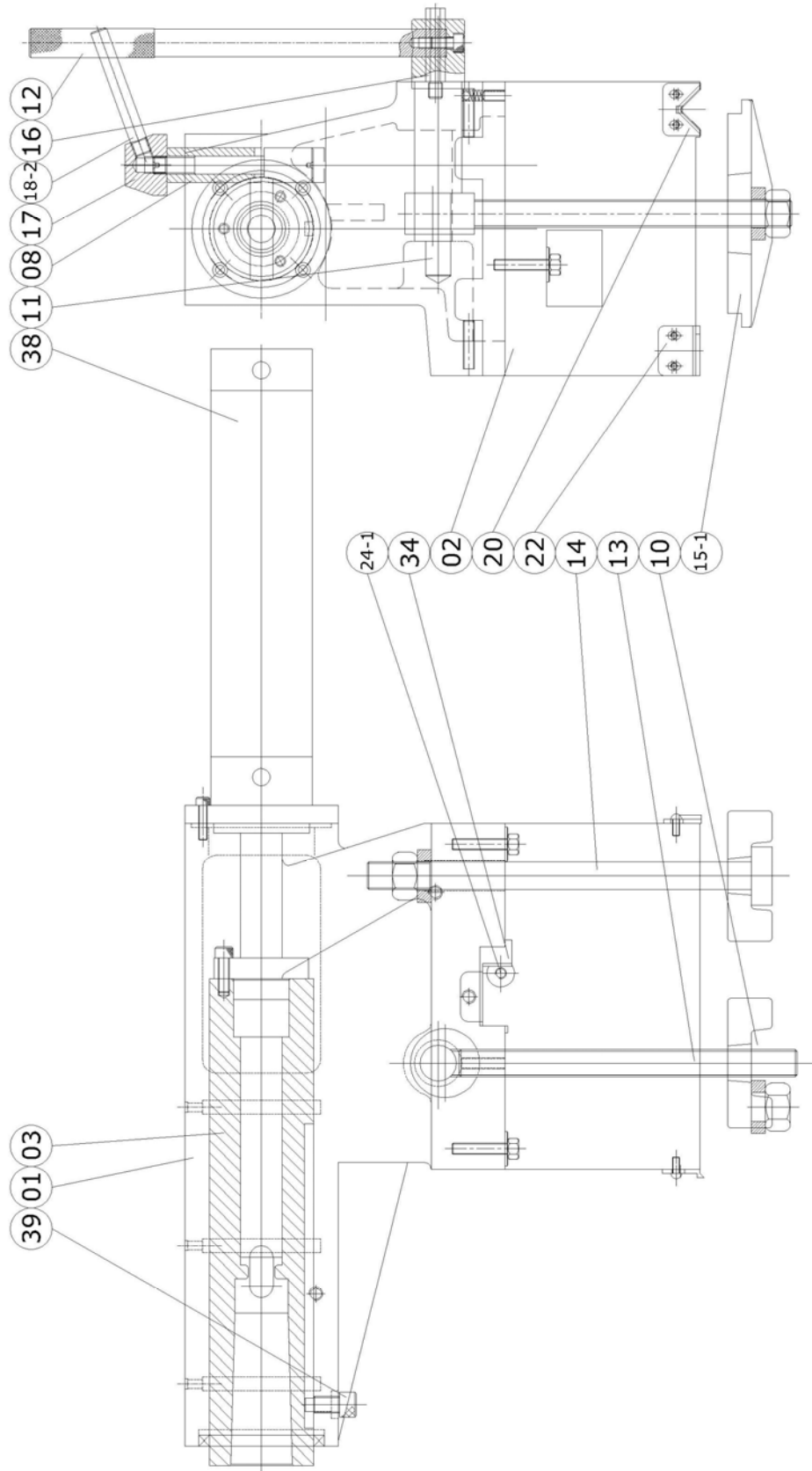


Parts list of 18"/21"/25" Manual Tailstock

NO.	PARTS NO.	DESCRIPTION	Q'TY	NOTE
057	25T-057000	HANDLE	1	
060		BEARING 51104	2	
061		KEY 6*6*14	1	
062		SCREW M5*12	4	
063		SCREW M6*50	4	
064		SCREW M8*20	5	
065		SCREW M8*40	2	
066		SCREW M6*16	1	
067		SCREW M8*35	2	
068		NUT 3/8"	1	
069		NUT M20	1	
070		SPACER 20*37*4	1	
071		SPACER M8	3	
072		OIL SEAL 75*90*8	1	
073		STEEL BALL & SPRING	2	
074		OIL STUFF	2	
		OIL STUFF	3	FOR 25CT-001

8.5.2 HYDRAULIC TAILSTOCK -18"/21"/25" Tailstock Option

HYD. TAILSTOCK
2010.08.21

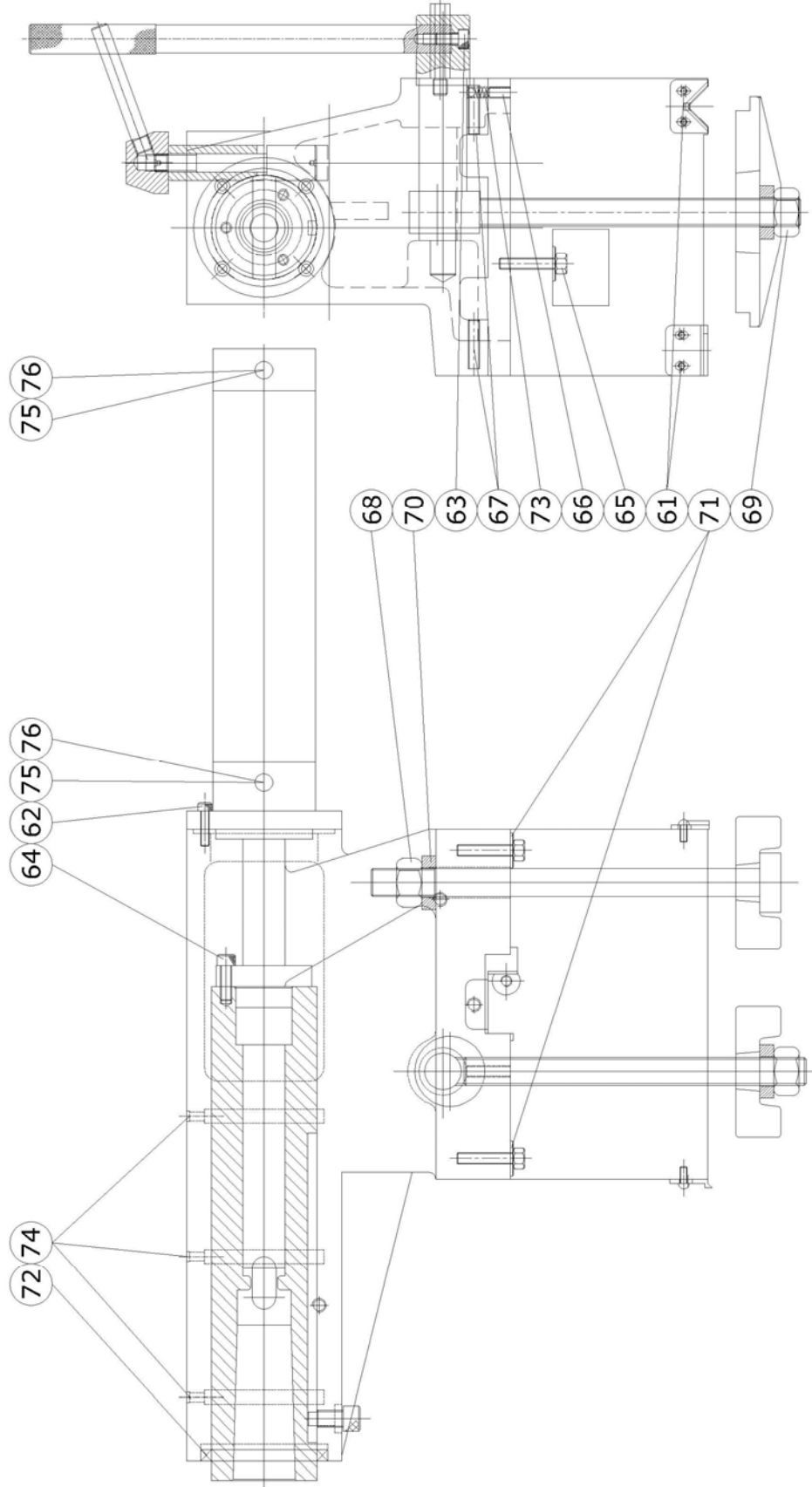


Parts list of 18"/21"/25" Hydraulic Tailstock

OPTION

NO.	PARTS NO.	DESCRIPTION	Q'TY	NOTE
001	25CT-001000	TAILSTOCK BODY	1	
002	18T-002000	BASE	1	
	21T-002000	BASE	1	
	25T-002000	BASE	1	
003	25T-003000	QUILL	1	
008	25T-008009B	BOSS STUD	1	
010	25T-010000	WASHER	1	
011	25T-011000	ECCENTRIC LOCK STUD	1	
012	25T-012000	LOCKING LEVER	1	
013	18T-013000	CLAMPING BOLT	1	
	21T-013000	CLAMPING BOLT	1	
	25T-013000	CLAMPING BOLT	1	
014	18T-014000	CLAMPING BOLT	1	
	21T-014000	CLAMPING BOLT	1	
	25T-014000	CLAMPING BOLT	1	
015-1	25T-015100	HOLDING DOWN PLATE	2	
016	25T-016000	STOP PIN	1	
017	25T-017000	HEAD BOSS	1	
018-2	25T-018200	HANDLE	1	
020	25T-020000	WIPER	2	
022	25T-022000	WIPER	2	
024-1	25S-024100	ADJUSTMENT BOLTS	2	
034	25T-034000	GIB	1	
038	25CT-038000	HYD. CYLINDER	1	
039	25T-039000	FIXING SCREW	1	

Hydraulic Tailstock-18"/21"/25" Tailstock **OPTION**

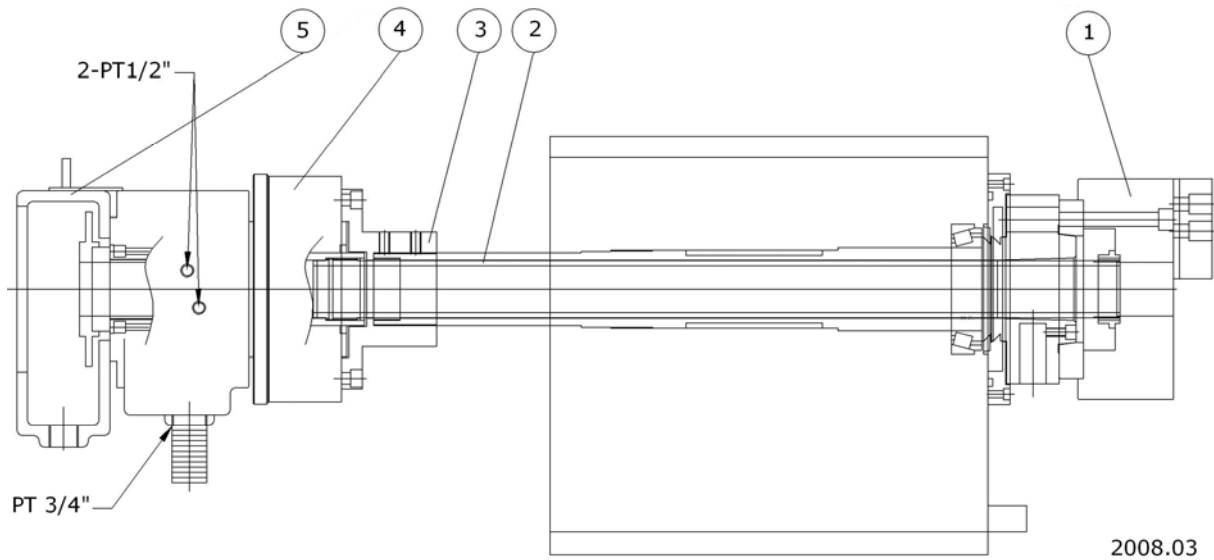


HYD. TAILSTOCK
2010.08.21

Parts list of 18"/21"/25" Hydraulic Tailstock**OPTION**

NO.	PARTS NO.	DESCRIPTION	Q'TY	NOTE
061		SCREW M5*12	8	
062		SCREW M6*25	4	
063		SCREW M8*20	1	
064		SCREW M8*25	3	
066		SCREW M6*16	1	
067		SCREW M8*35	2	
068		NUT 3/8"	1	
069		NUT M20	1	
070		SPACER 20*37*4	1	
071		SPACER M8	2	
072		OIL SEAL 75*90*8	1	
073		STEEL BALL & SPRING	2	
074		OIL STUFF	3	
075		CONNECTION 3/8T*3/8H	2	
076		CONNECTION 3/8T*3/8H	2	90°

8.6 HYDRAULIC CYLINDER FOR HYD. CHUCK - OPTION

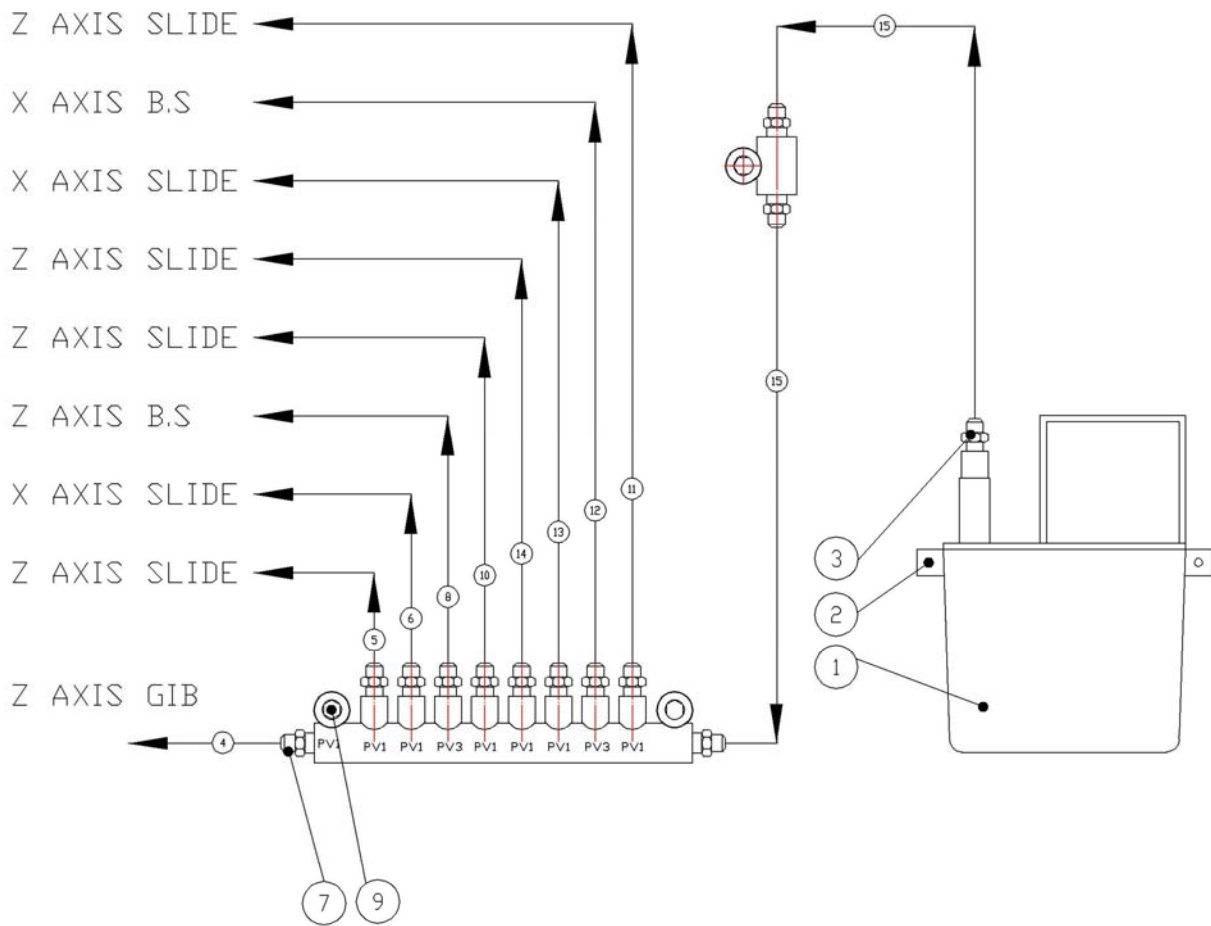


Parts list of hydraulic cylinder for hyd. Chuck

NO.	PARTS NO.	DESCRIPTION	Q'TY	NOTE
1		Chuck	1	
2		Draw Bar	1	
3		Bracket	1	
4		Hydraulic Cylinder	1	
5		Back cover	1	

Different models have different part number. When ordering parts, please specify model number, spindle bore, HP and size of hydraulic chuck.

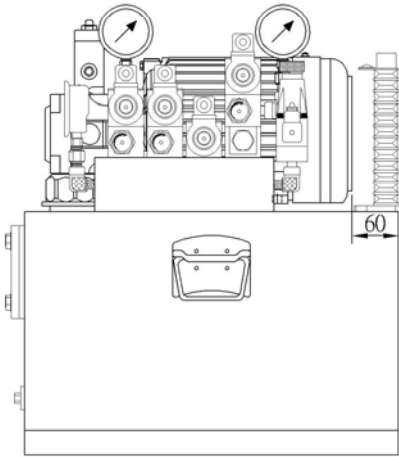
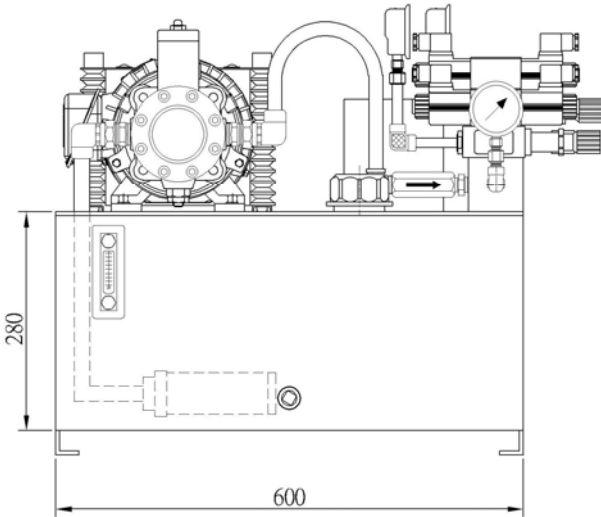
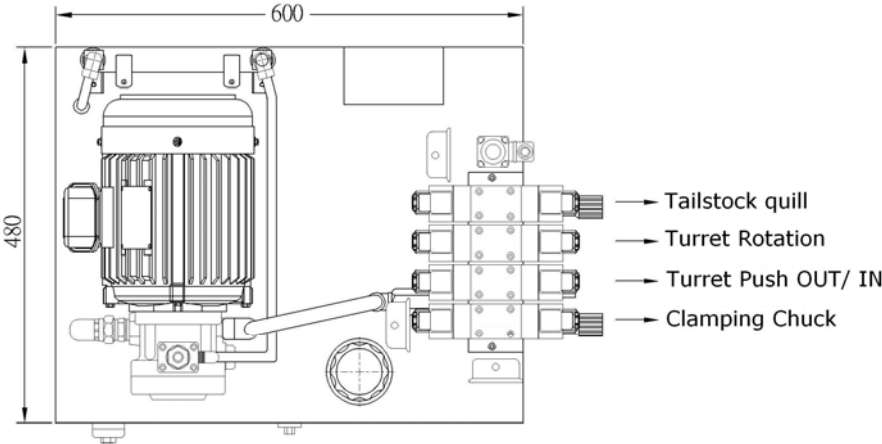
8.7 LUBRICATION SYSTEM



NO	PART NO	PART NAME	QTY	REMARK
1		LUB. PUMP	1	
2		SOCKET HD. SCREW	2	
3		PIPE LOCK NUT	1	
4		ALUMINUN PIPE $\phi 4$		
5		ALUMINUN PIPE $\phi 4$		
6		ALUMINUN PIPE $\phi 4$		
7		PIPE LOCK NUT PIPE JOINT		
8		ALUMINUN PIPE $\phi 4$	1	
9		SOCKET HD. SCREW	2	
10		ALUMINUN PIPE $\phi 4$		
11		ALUMINUN PIPE $\phi 4$		
12		ALUMINUN PIPE $\phi 4$	1	
13		ALUMINUN PIPE $\phi 4$		
14		ALUMINUN PIPE $\phi 4$		
15		ALUMINUN PIPE $\phi 6$		

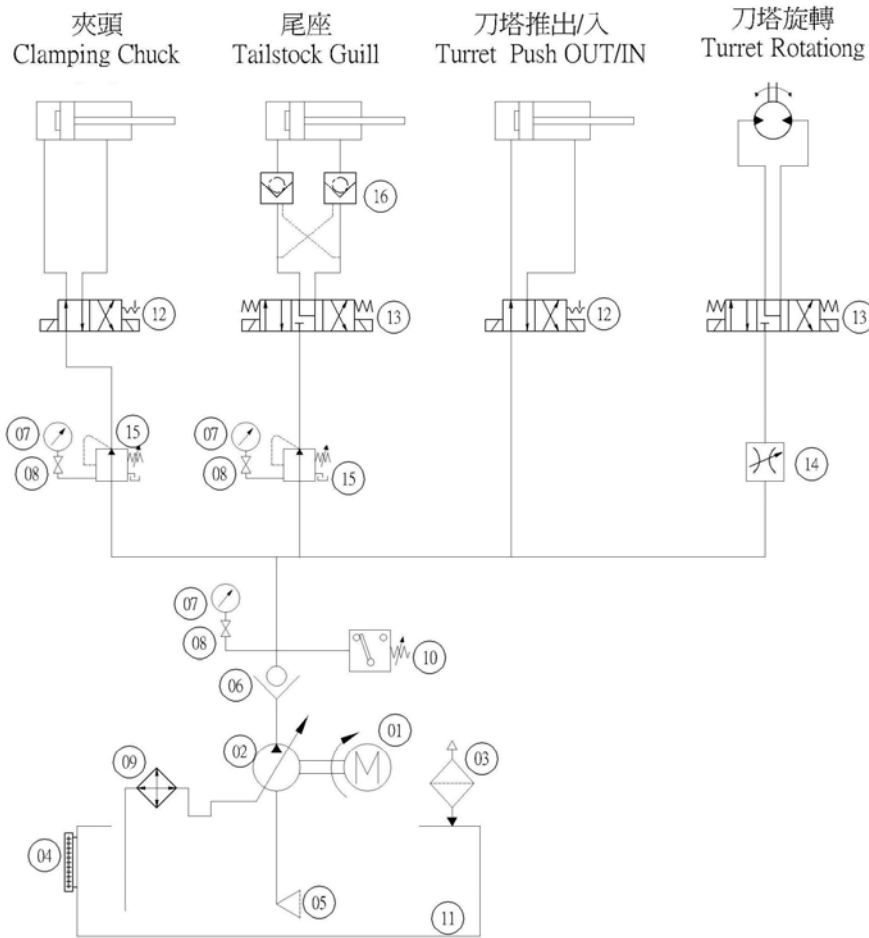
S 1=2.5

8.8 HYDRAULIC UNIT OPTION



2010.08

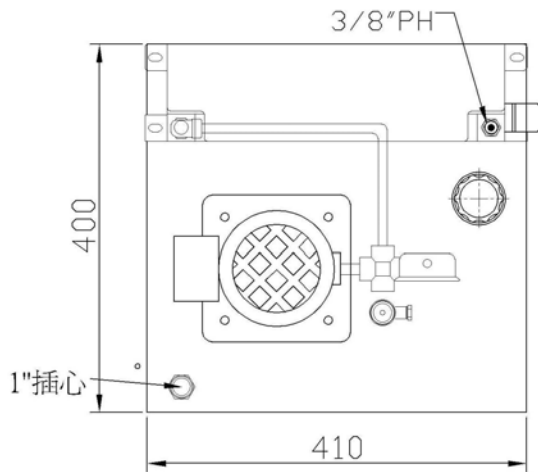
HYDRAULIC CIRCUIT DIAGRAM



NO	Item	Qty
1	Motor	1
2	Pump	1
3	Filler breather filter	1
4	fluid level	1
5	Sunction filter	1
6	Check valve	1
7	Pressure gauges	3
8	Joint	3
9	Heat exchangers	1
10	Pressure switch	1
11	tank	1
12	Solenoid valve	2
13	Solenoid valve	2
14	Flow control valve	1
15	Pressure relief valves	2
16	check valve	1
17		
18		

1037-024
2010.08

8.9 AUXILIARY SIDE OIL TANK



DRAWING NO. 1037-EL 2010-08-18

NO	物件名稱	Item	Qty	model
1	馬達	Motor	1	1/4HP
2	注油器	Filler breather filter	1	AB-1162
3	油面計	fluid level	1	LS-3"
4	壓力計	Pressure gauges	1	3231122 2KG
5	銜接	Fitting	1	BH57-01
6	風冷式鋁合金冷卻器	Heat exchangers	1	AW-0608L-CA2
7	壓力開關	Pressure switch	1	PMM2A14K
8	油桶組立	Oil Tank	1	410x400x300
9				
10				

