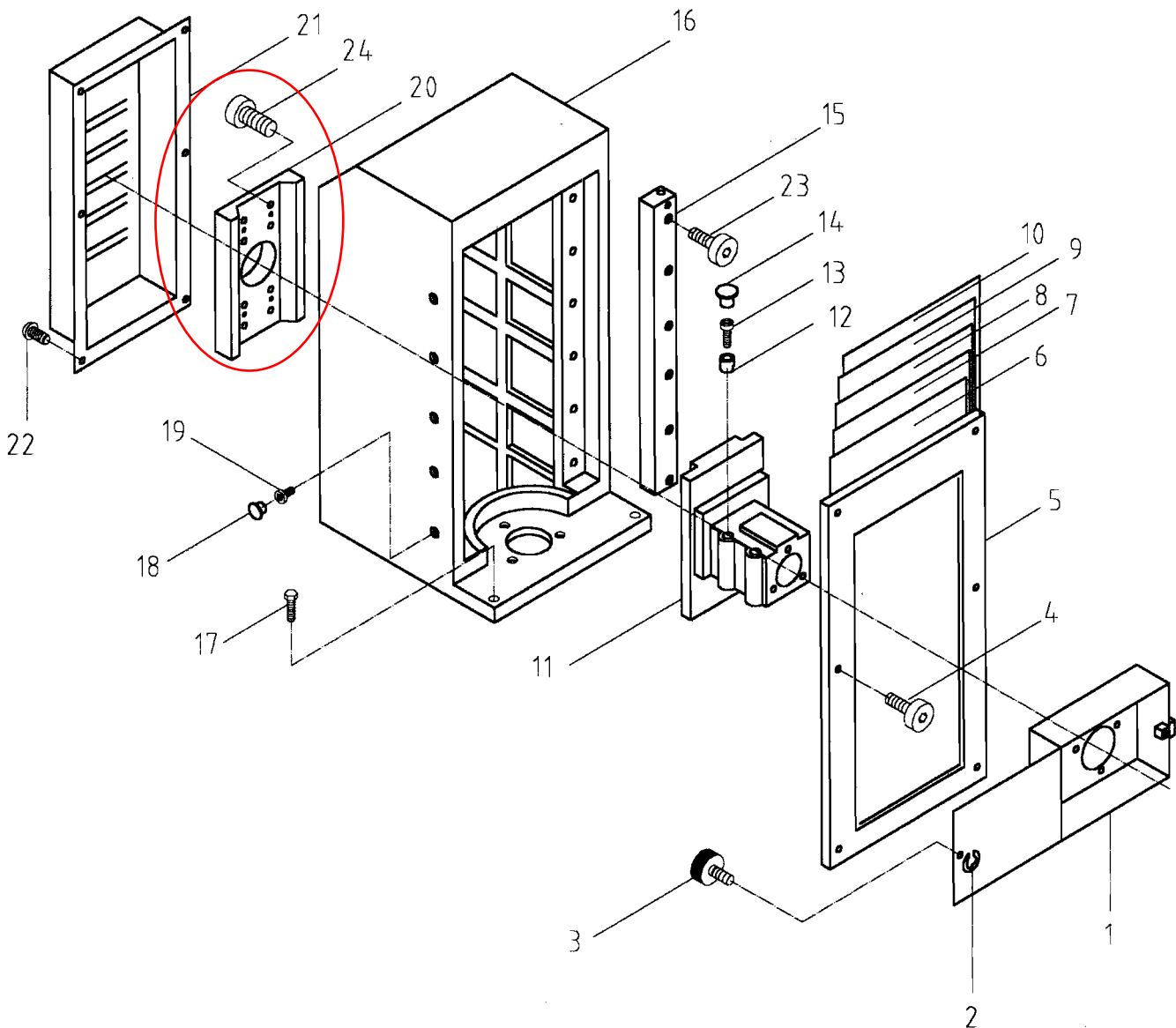


# COLUMN ASS'Y

1. Take off the back cover.
  2. Evenly loosen the eight #24 screws, (about 1/8 revolution).
  3. Then tighten the four Jackscrews evenly. These screws are not numbered on the manual. (The Jackscrews are the middle screw of the set of three screws on each set.)
- You need to do trial and error for adjustment. If is not smoothly, repeat adjustment. The screws need to be evenly tightened and loosened.



# COLUMN ASS'Y

(618-02)

Index No.	Parts No.	Parts Name	Q'ty	Spec.
1	618-02-001	Wheel Guard	1	
2		E-Snap Ring	1	$\phi 8$
3	618-02-002	Lock Screw	1	
4		Cross Head Screw	6	M5*10L
5	618-02-003	Front Guard	1	
6	618-02-004	Front Guard	1	
7	618-02-005	Front Guard	1	
8	618-02-006	Front Guard	1	
9	618-02-007	Front Guard	1	
10	618-02-008	Front Guard	1	
11	618-02-009	Head A Housing	1	
12	618-02-010	Copper Collar	2	
13		Socket Head Cap Screw	2	M10*40L
14	618-02-011	Plastic Cover	2	
15	618-02-012	Shield Dust Guide Rail	2	
16	618-02-013	Column	1	
17		Hexagonal Head Screw	3	3/4"*65L
18	618-02-014	Plastic Cover	12	
19		Socket Head Cap Screw	12	M10*16L
20	618-02-015	Head B Housing	1	
21	618-02-016	Column Rear Cover	1	
22		Cross Head Screw	6	M5*8L
23		Socket Head Cap Screw		M10*30L
24		Socket Head Cap Screw		M10*40L