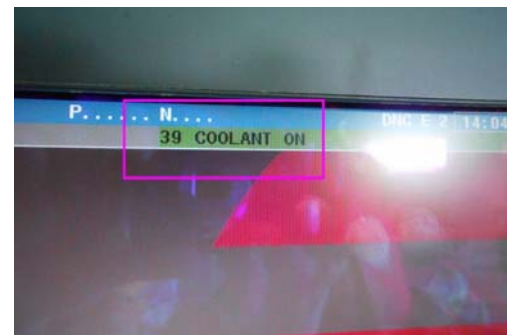
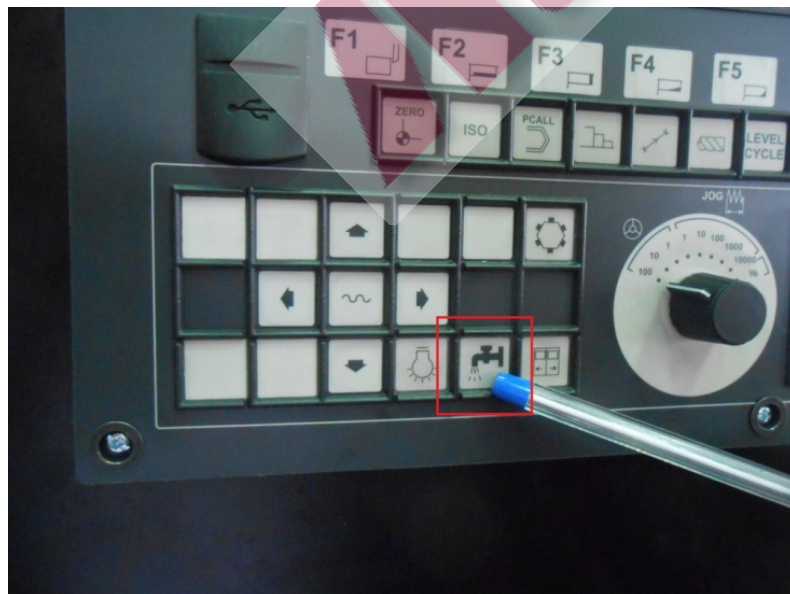


Coolant System on Sauter

- (1) CNC Control: M8→Open
M9→Close

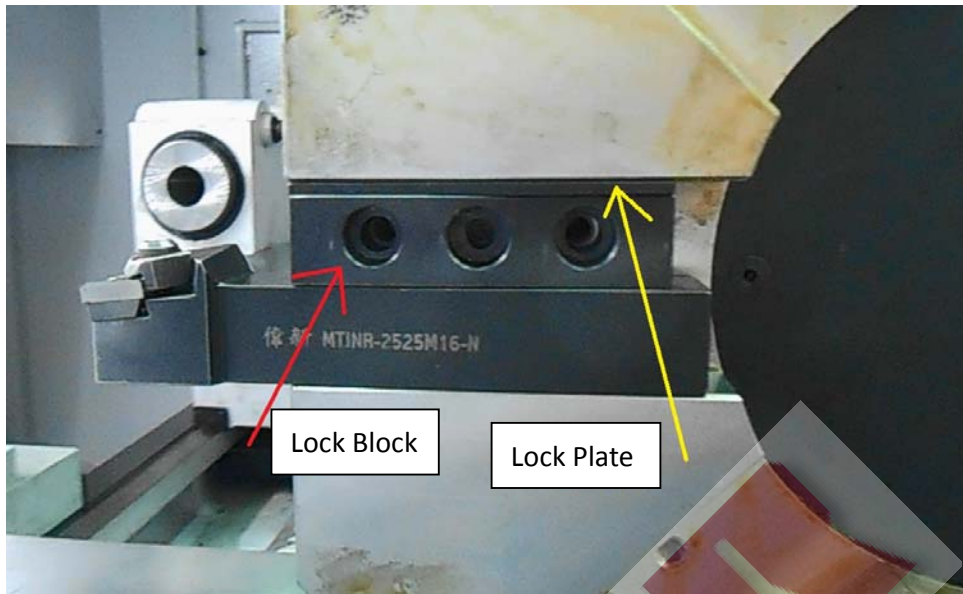


- (2) Manual Control



2. Tool & Tool Holder Set Up

(1)OD Turning, [OD Turning Video link](#)

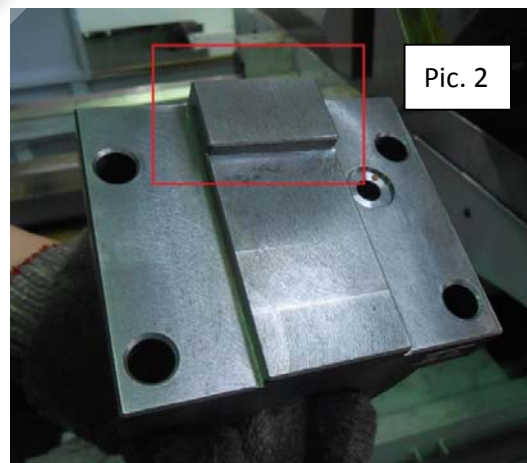
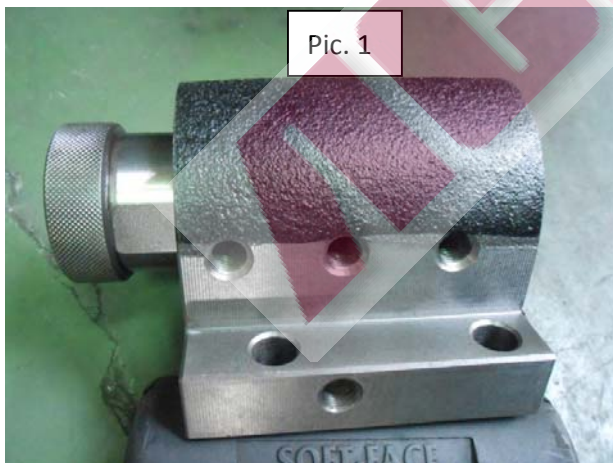


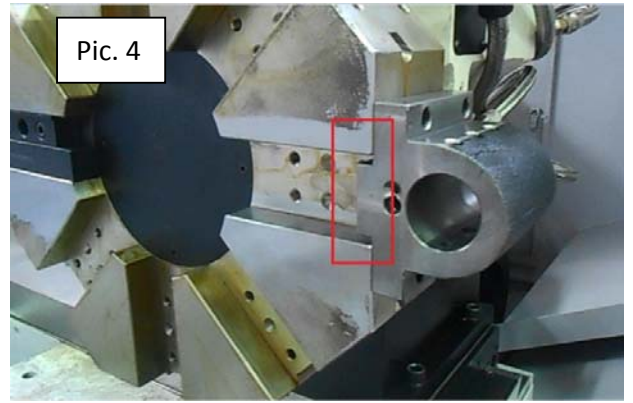
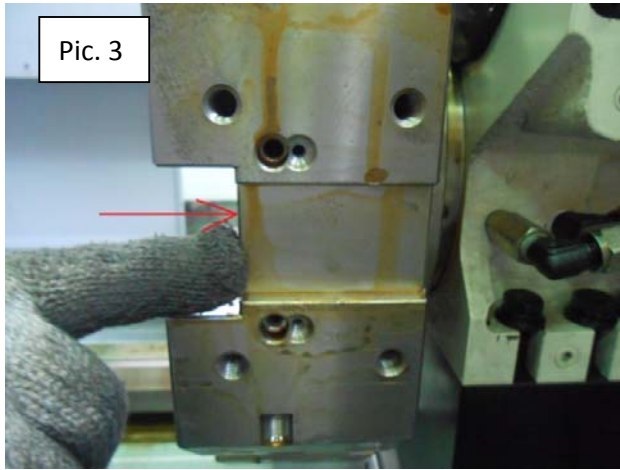
(2)ID Turning Holder

Step 1. Install ID Turning (Pic. 1.)

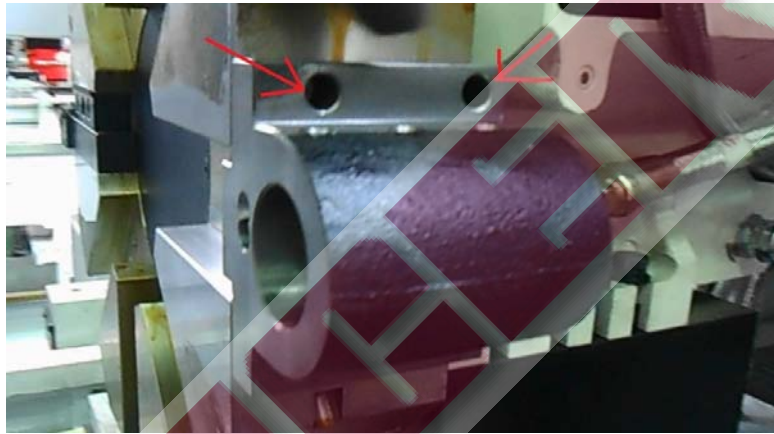
Holder on Turret, See Pic. 4

Make sure the Red Box Section (Pic. 2) has full contact on the edge of the turret (Pic. 3)



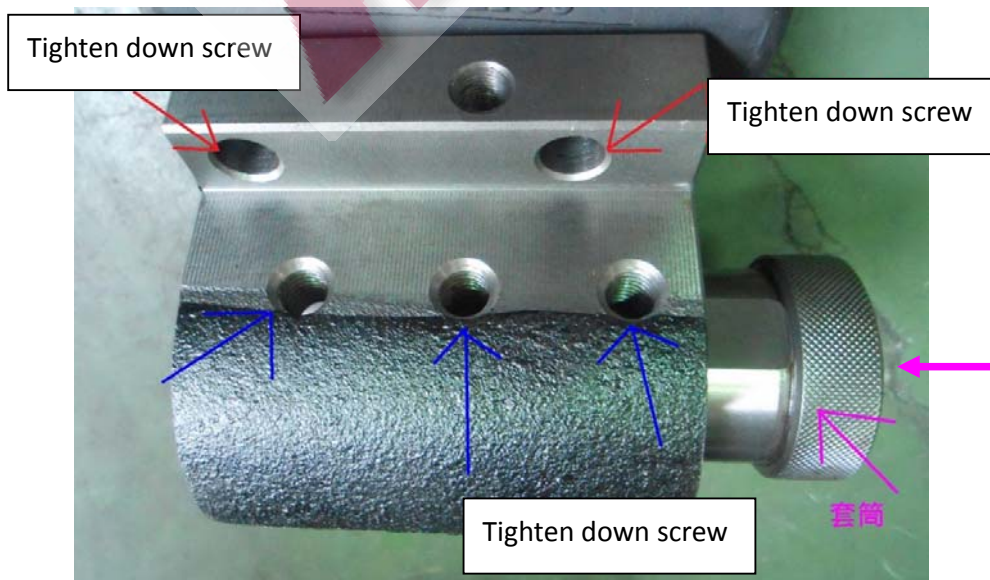


Step 2
Tighten Screws (Pic. 5)



Pic. 5

Step 3.
Place the insert into the ID Turning Holder, Tighten down screw, insert the tool



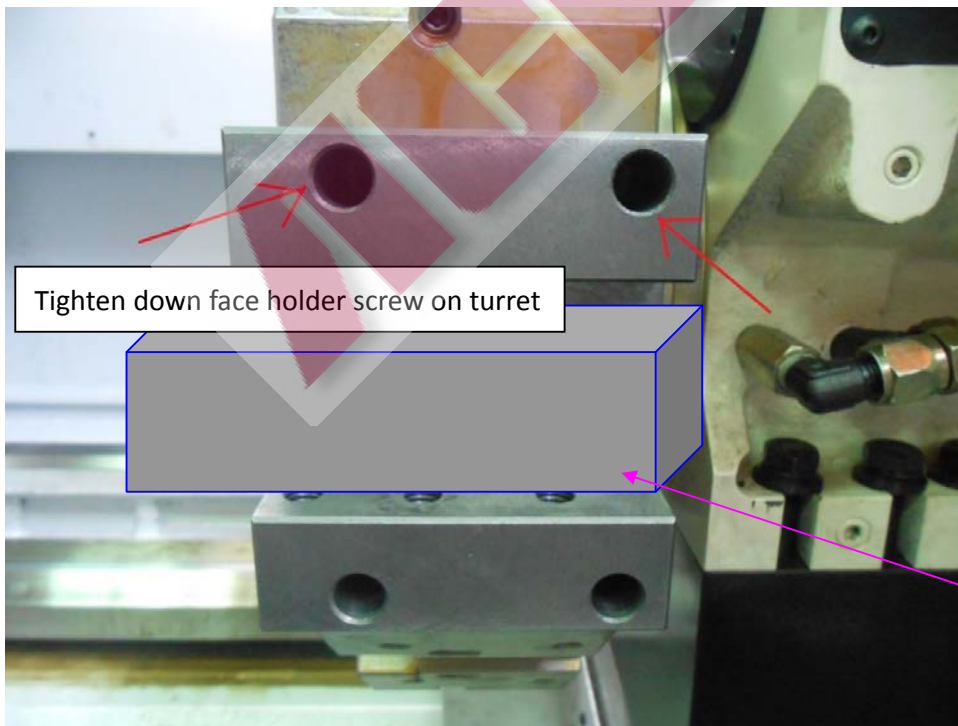
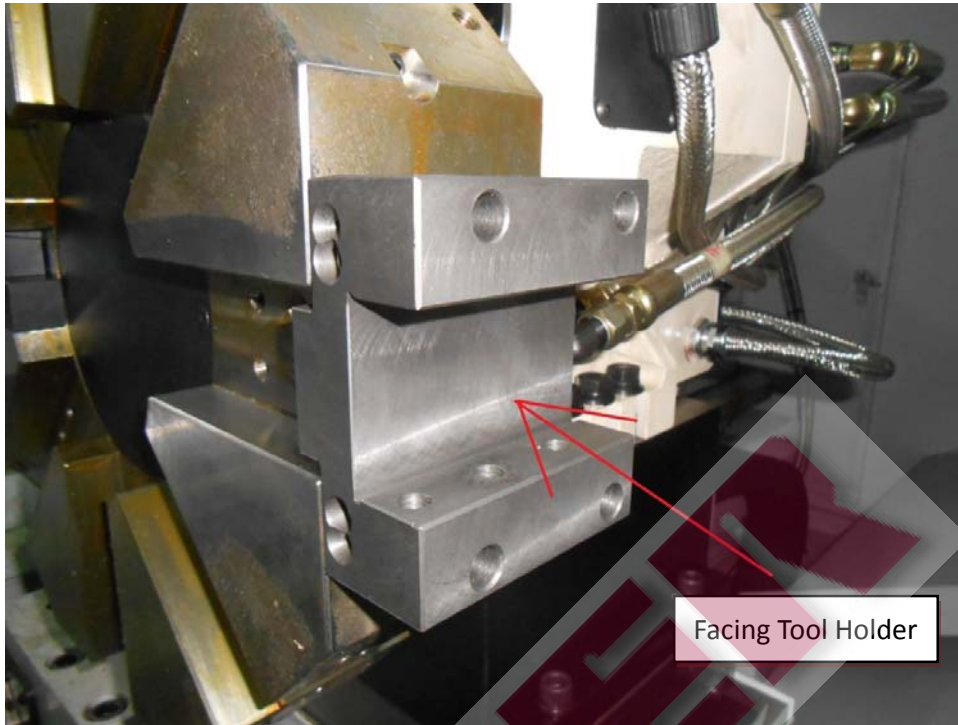
刀具

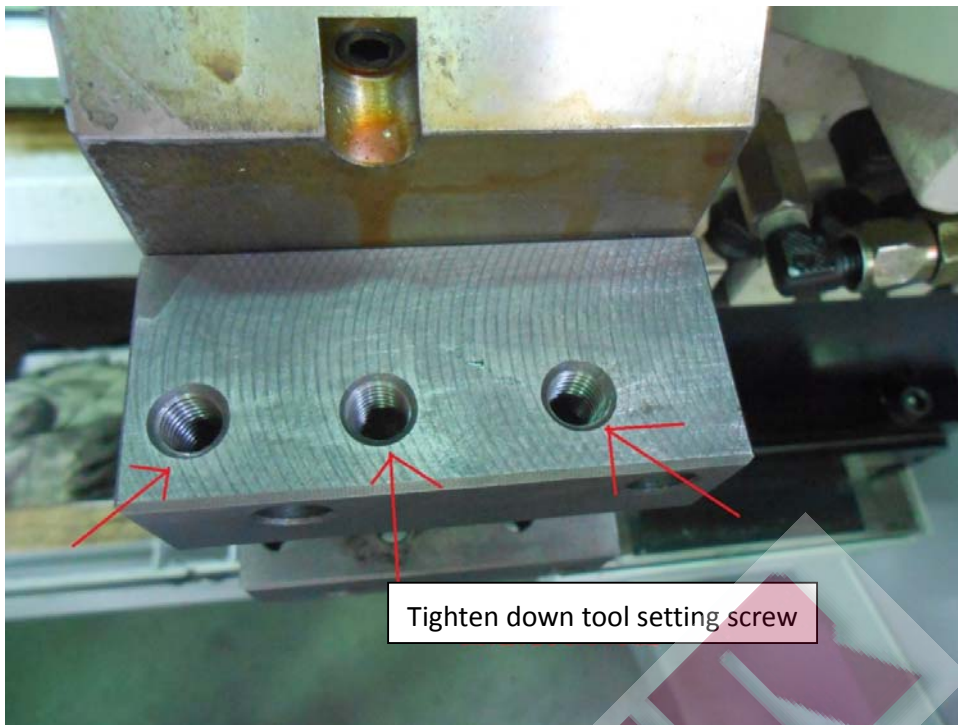
套筒

(3)Facing Holder

Step 1

Install Facing Tool Holder on Turret





Tighten down tool setting screw



Locking Plate

Coolant Nozzles

使用方式(功能)

內徑刀座：塘孔，車削圓棒中間孔位

端面刀座：車削圓棒端面 O 型環的溝槽，使用於端面的加工

襯套：與內徑刀座搭配變換車削的孔位大小，(稱:變徑套)

上下壓板：用於固定外徑刀