

## ACER Group

Springwood Industrial, Inc.  
1062 N. Kraemer Place  
Anaheim, CA 92806  
Tel: 714-632-9701 Fax: 714-632-9730  
<http://www.acergroup.com>  
[info@acergroup.com](mailto:info@acergroup.com)

Klim Industrial, Inc.  
244 N. Randolphville Road  
Piscataway, NJ 08854  
Tel: 732-752-9100 Fax: 732-752-9101  
<http://www.acergroup.com>  
[acer\\_klim@yahoo.com](mailto:acer_klim@yahoo.com)

### Peer-to-Peer Networking Setup

1. Connect CAT 6 (crossover) cable and keyboard to control and PC



CNC RJ-45 jack  
and keyboard

2. Create a new folder on your desktop. Name the folder “Networking”. After creating the new folder, right click the new folder and select “Properties”. A window with the title “Networking Properties” will open. Select the second tab “Sharing”. Under the sharing tab, there will be two options to select. Select “Network Sharing and Security”. There will be two options below titled “Share this folder on the network” and “Allow network users to change my file”. Please select the two options. Note that the shared name will read the same name for the file you just created on the desktop. Click the “Apply” tab on the lower corner to accept the changes. You have finished creating a shared folder on your computer, which will be about to be seen by the ANILAM CNC control. (These are the directions for users running Windows XP, other versions of Windows may have different directions to create a shared folder).
3. Turn on CNC control. When the screen stops at “Type your user name or press ENTER if it is CNC:” press ENTER. When the screen stops at “Type your password”, use keyboard and type “CNC” and press ENTER. The main screen will show up.



F10 key

4. Press emergency button, then F10 key.  
The “Software Options” screen will show up. Press the “Clear” key. The CNC console will prompt for a password. Please enter “Z48” as the factory default password. The screen will read C:\P6M>

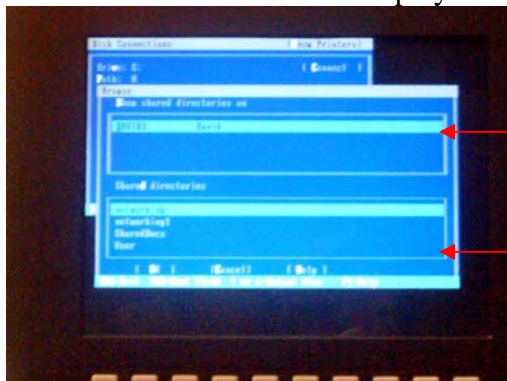


Clear key

5. Enter “net” and press ENTER. A blue screen should pop up. Now you may create a drive by holding ALT +V or you can use tab key to move to drive and enter “H”. You can name this drive to any character from D thru Z. Hold down ALT + B (browse).



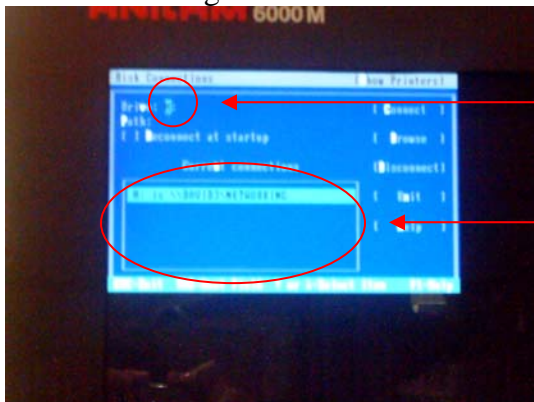
6. The shared directories will display.



Computer name on network

Shared directories


Tab down to Shared directories. Highlight the desired directory, for example, "Networking". Press ENTER.

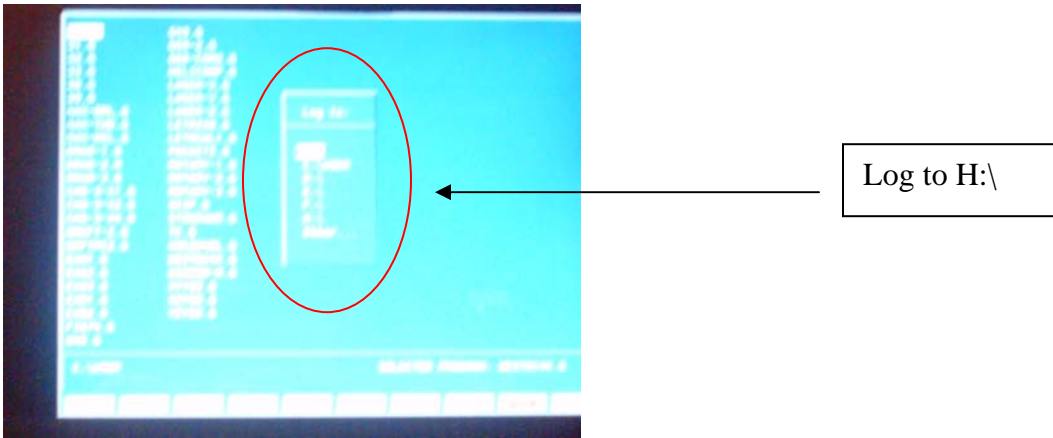


Screen shows H: drive

This is the directory we chose H: is \\David3\Networking

Press Esc and go back to the DOS prompt. Enter "P6M" and press ENTER. Wait about 5 seconds, CNC will go back to main screen.

7. "Home" machine: press F2 program key to next page. Press SHIFT  . Press Log and log to H:\.



You will see all the files in H: drive, which is the shared drive with the computer. Select file needed for machining on H: drive, then press F9 (utility) and copy to C:\user.

8. **Always run program on C:\user drive.** When you need to upload files to your PC from ANILAM control, copy files through shared H: drive.