



Springwood Industrial, Inc.
2320 E Valencia Dr
Fullerton , CA 92831
Tel: 714-871-5558 Fax: 714-871-5554
<http://www.aceronline.net>

info@aceronline.net

Klim Industrial, Inc.
244 N. Randolphville Road
Piscataway, NJ 08854
Tel: 732-752-9100 Fax: 732-752-9101
<http://www.aceronline.net>

acer_klim@yahoo.com

PROCEDURE TO CHANGE PLC & BATTERY FOR SUPRA-618II ASD

Troubleshooting on Supra 618 –II ASD.

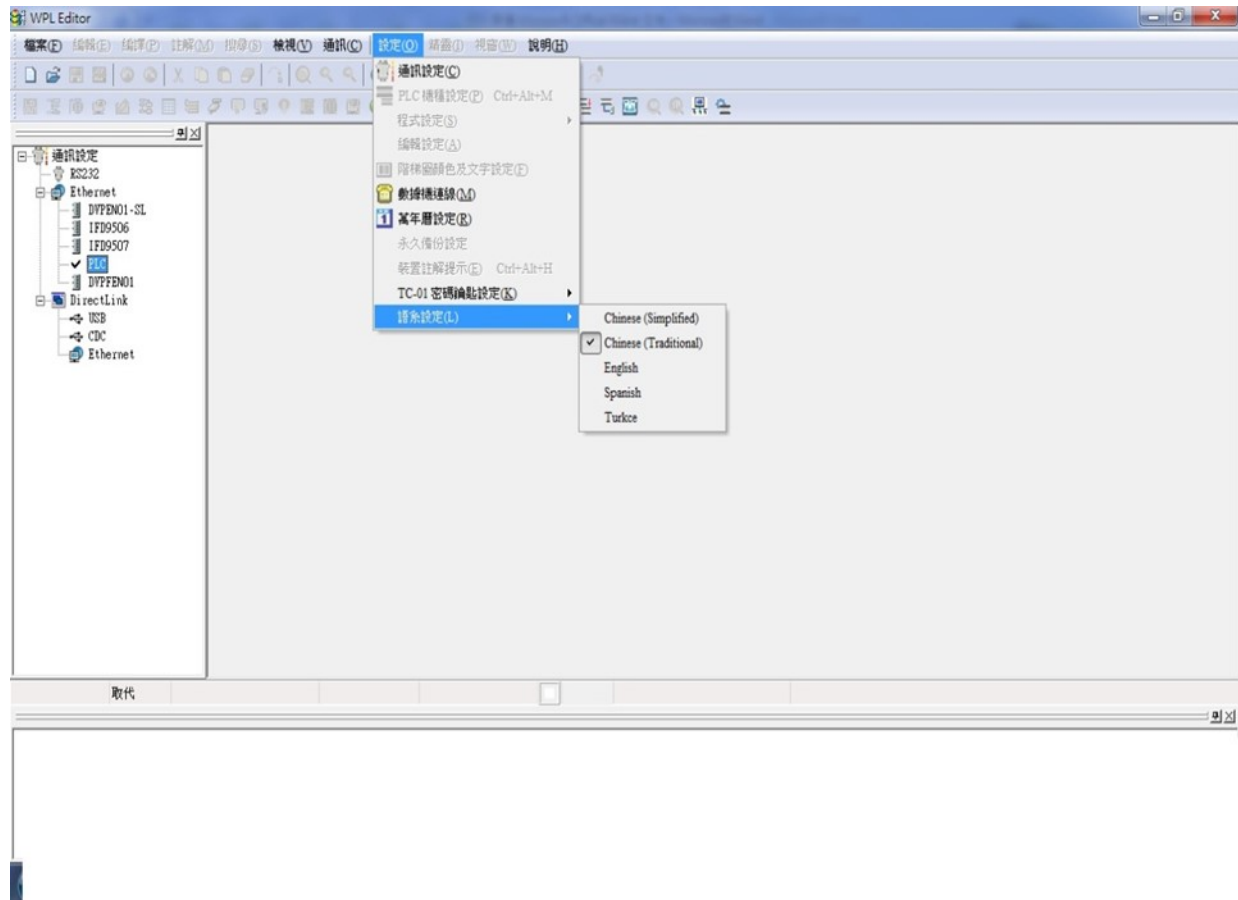
Problem: blank on the display.

Solution:

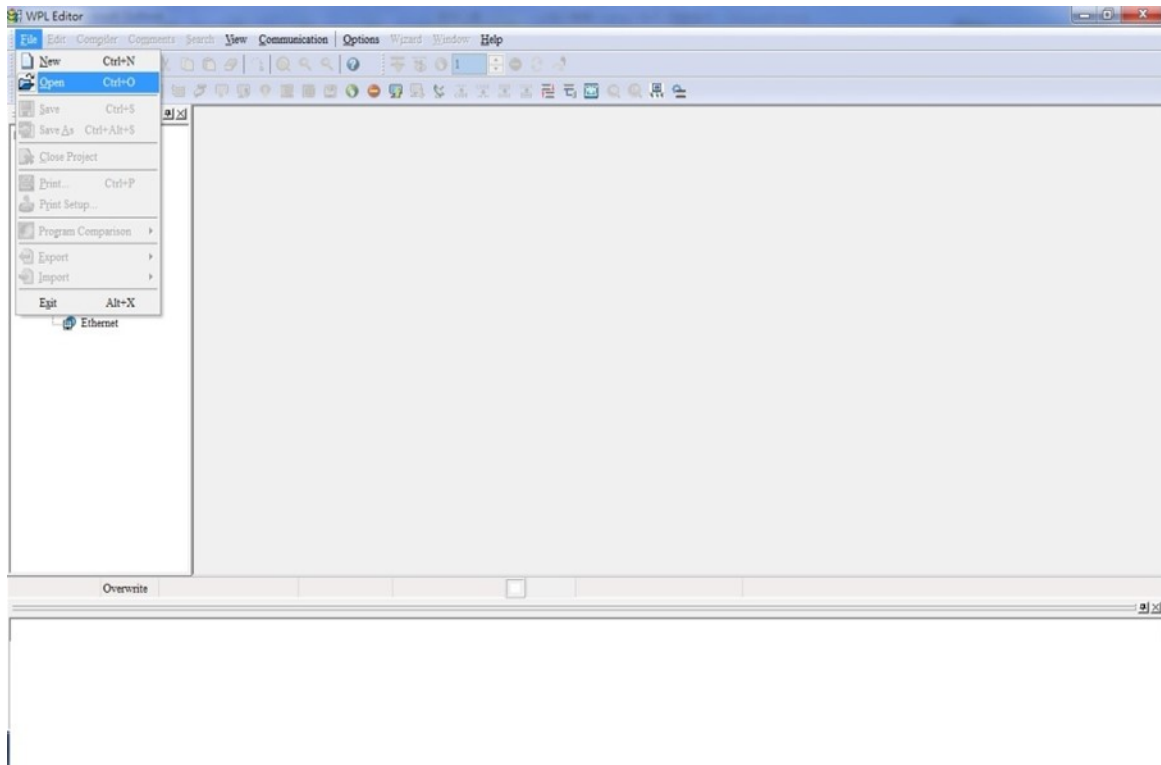
1. First replace Battery in PLC controller.
2. Download WPLEditor and PLC program on a laptop.
3. Install the WPLEditor on a laptop to reinstall a new PLC program in Supra 618II ASD.
4. Use [Cables \(USB to RS232\)](#) for PLC controller only from Taiwan Factory.
5. Connect the laptop to Delta PLC Controller via Cables (USB to RS232).
6. Please follow the four steps below.

“How to send a program from Laptop to PLC Controller in WPLEditor.”

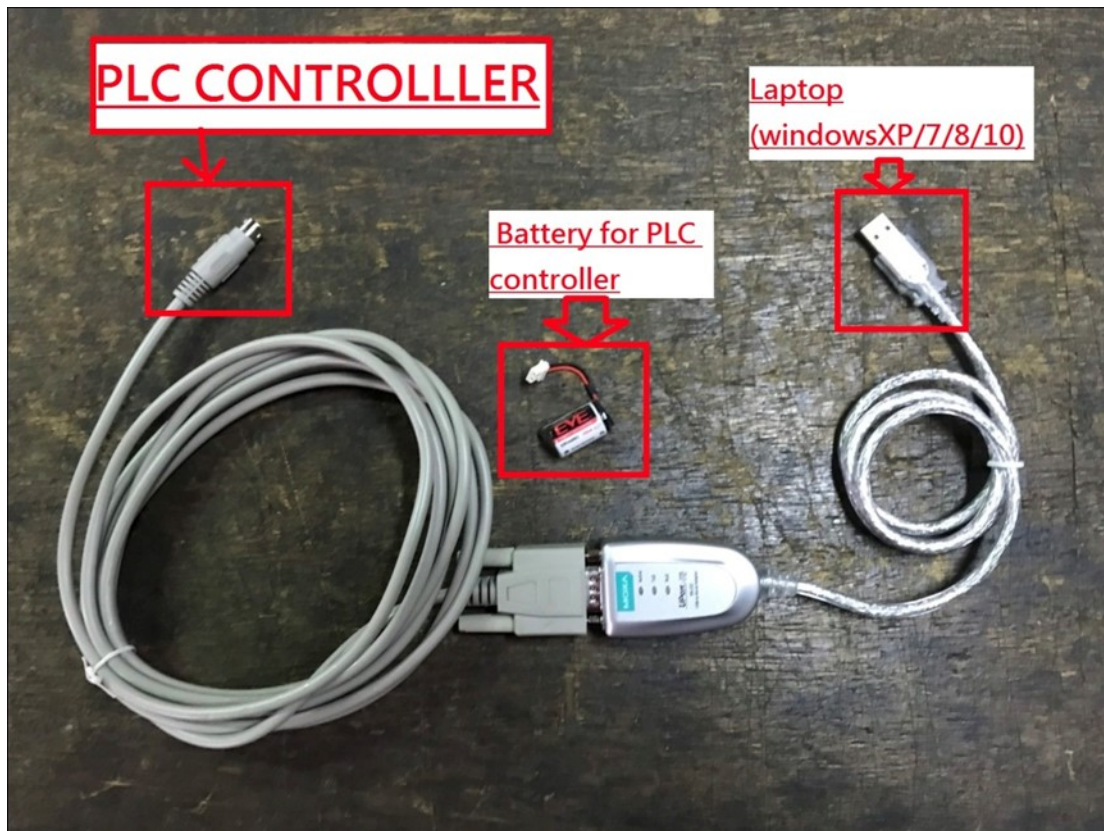
6-1. Please select Languages option form Chinese to English.



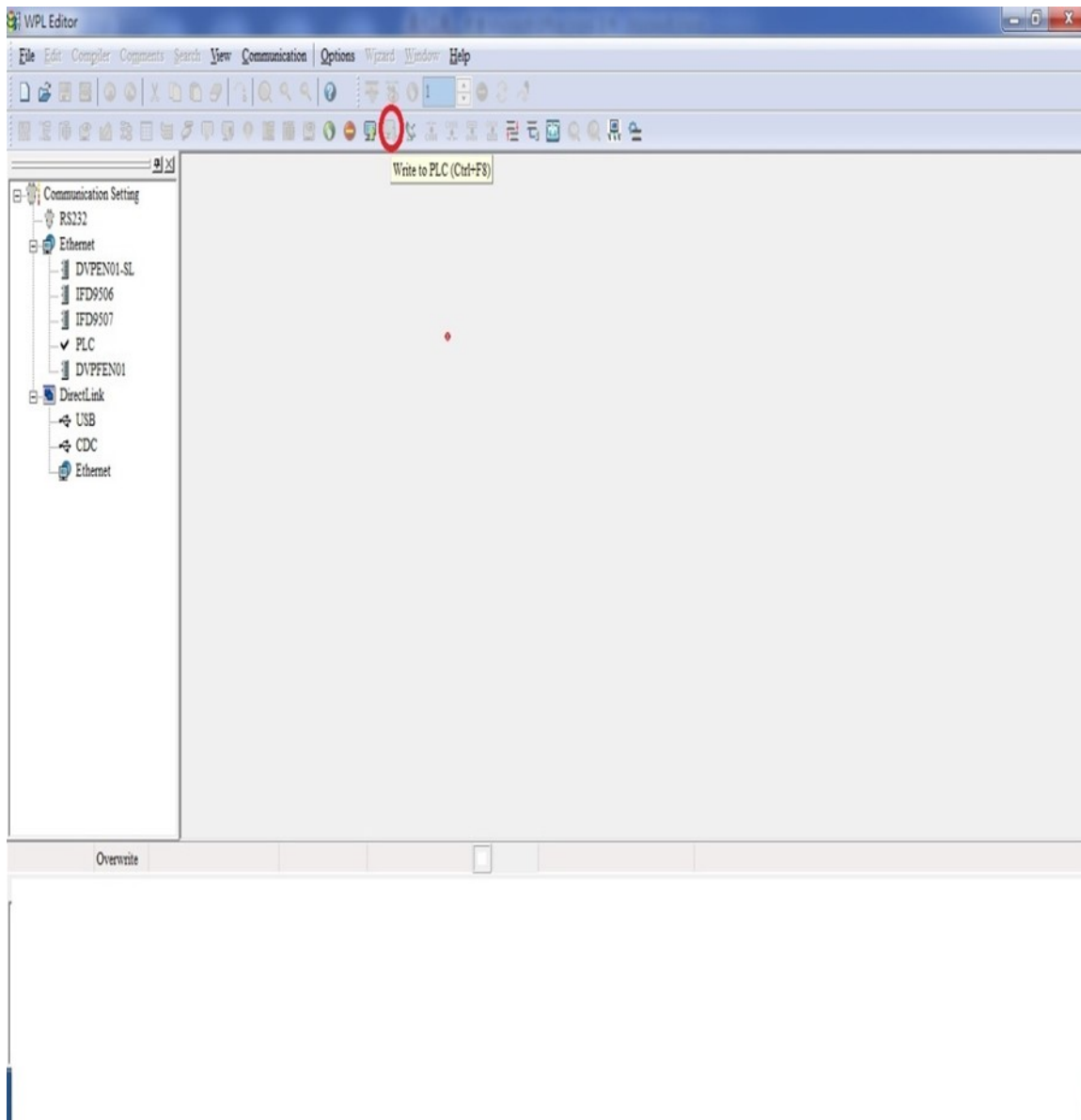
6-2. Open the file (PLC file)



6-3. Please use the cables between the Laptop (Windows XP/7/8/10) and PLC controller below.



6-4. Please select the item “Write to PLC”



6-5. Please restart the machine when you finished “Wire to PC”.