

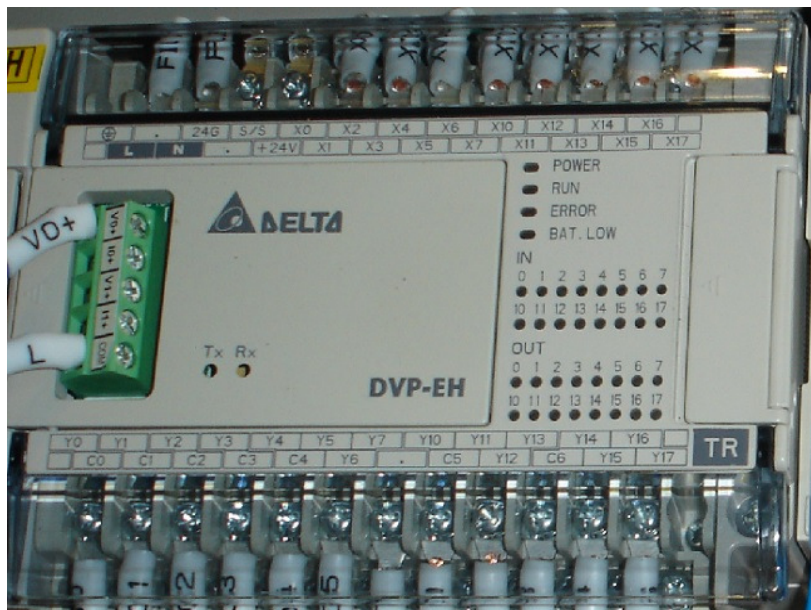
故障原因 程式備份器更新PLC程式 **Update PLC by the backup device.**

① 先將PLC主機(32EH)，由RUN切換成STOP

Switch the RUN position to STOP position of PLC.

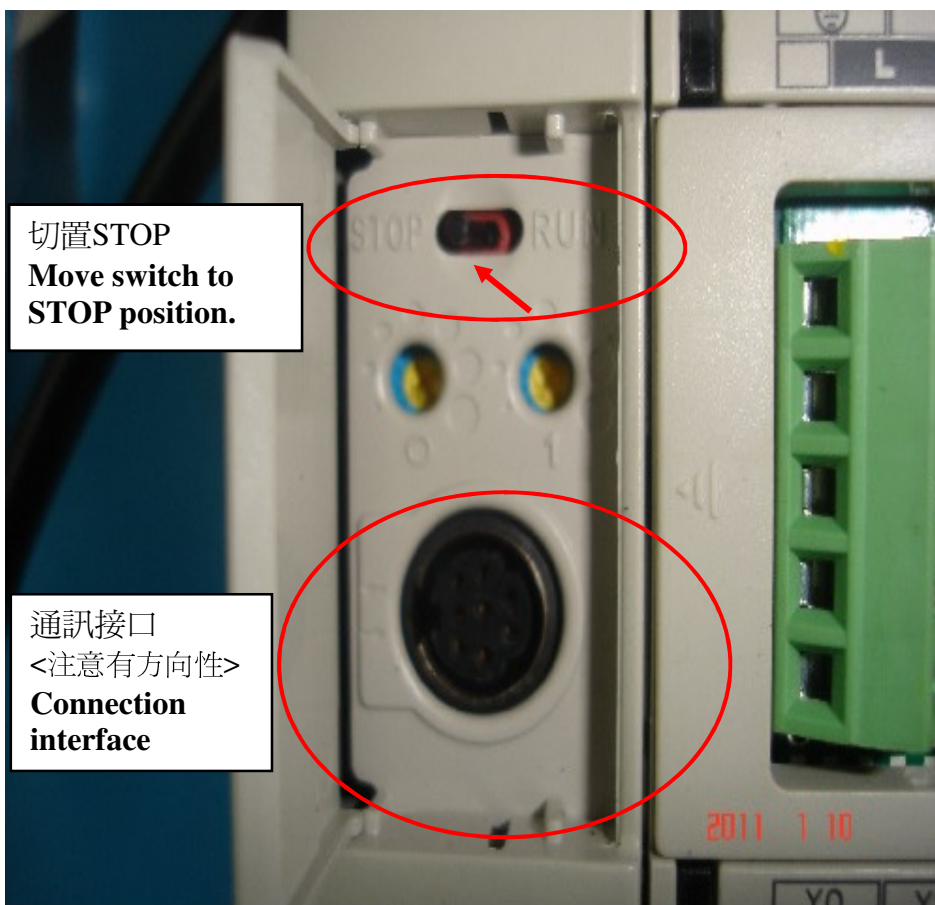


由RUN切換成STOP
Switch RUN to STOP.



切置STOP
Move switch to
STOP position.

通訊接口
<注意有方向性>
Connection
interface

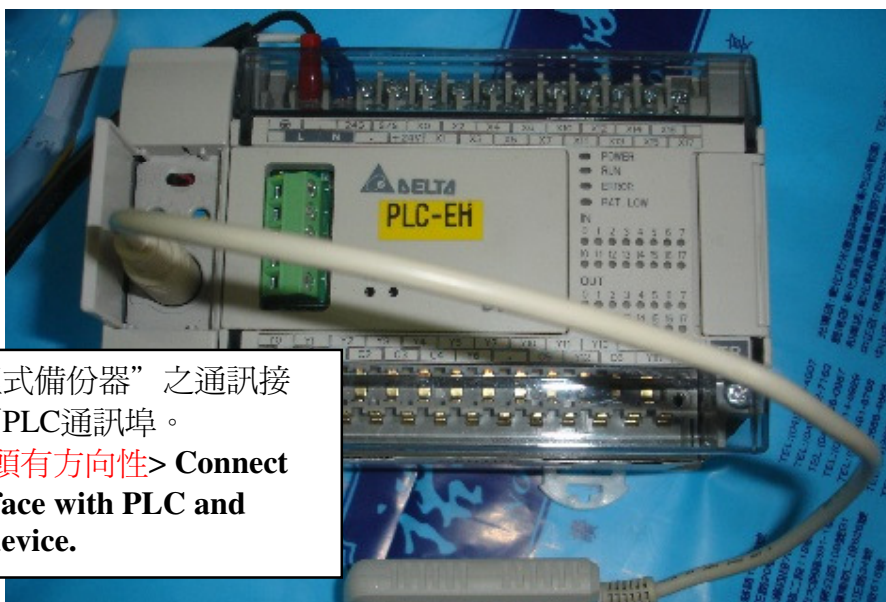


故障原因 程式備份器更新PLC程式 **Update PLC by the backup device.**

通訊接頭
Connection



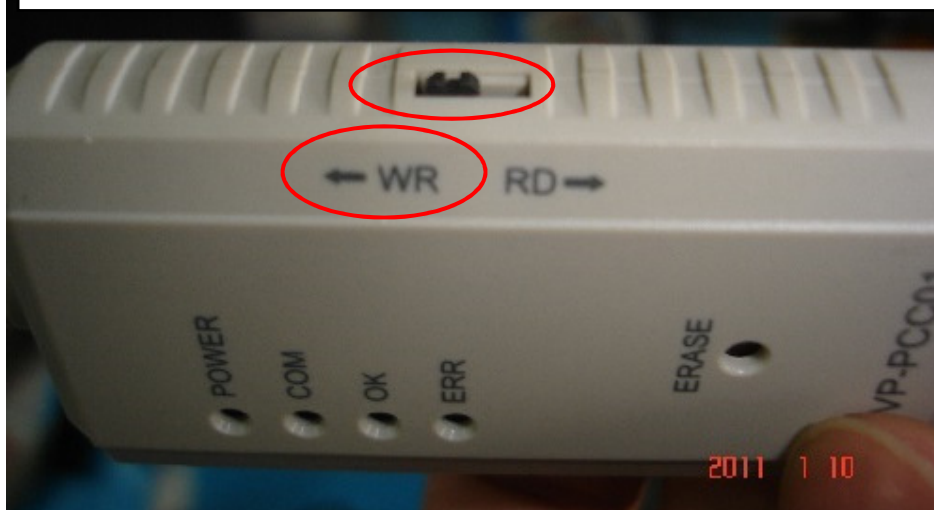
程式備份器 **This is the program backup**



請將” 程式備份器” 之通訊接頭插置到PLC通訊埠。
<注意接頭有方向性> **Connect the interface with PLC and backup device.**

送電前，請注意” 程式備份器” 之通訊模式開關切置” WR”的位置。

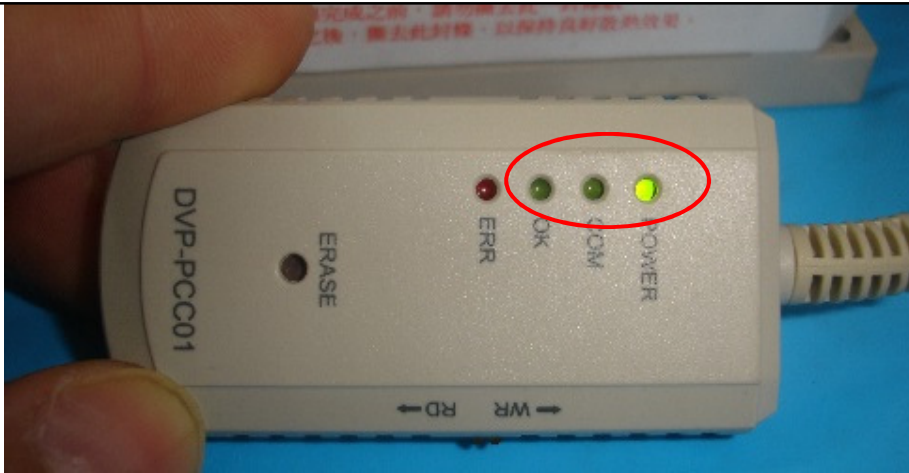
Before turn on, please make sure the switch of backup device



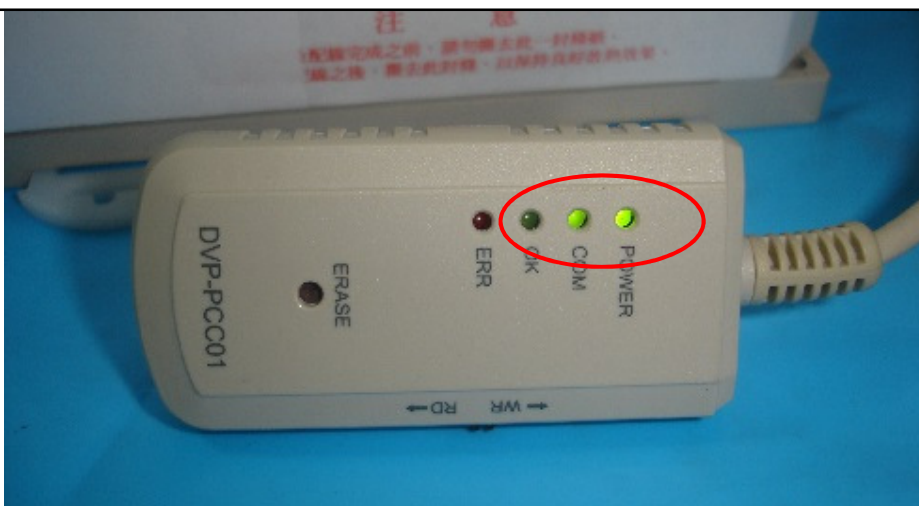
2011 1 10

故障原因 程式備份器更新PLC程式 **Update PLC by the backup device.**

送電後，” 程式備份器” 之POWER燈亮，待5秒後即開始Update。
After turn on, the light of POWER is running, please start to Update the program 5 seconds later.

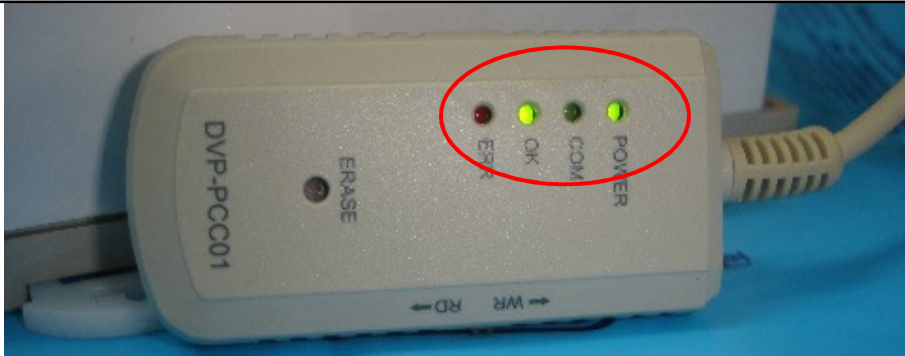


待5秒後即開始Update，COM燈閃爍。
The light COM is running after start to Update 5 seconds later.



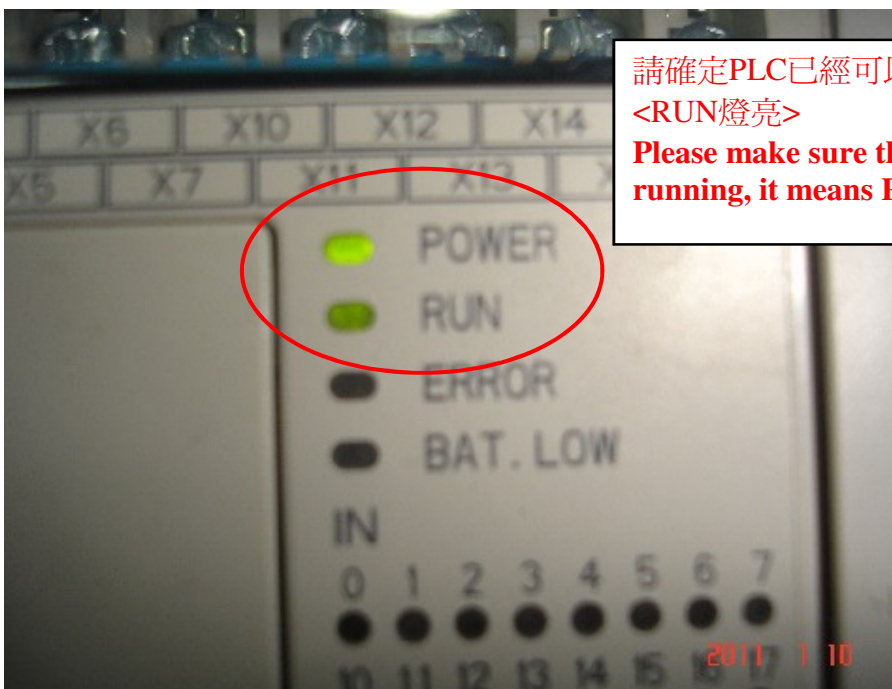
故障原因 程式備份器更新PLC程式 **Update PLC by the backup device.**

待Update完成後，COM燈停止閃爍。OK燈亮即完成Update操作。
Once finish the Update, the light of COM is off, the light of OK is running means the Update is finished.



完成Update操作後，請關閉電源，將”程式備份器”之通訊線移除，並將PLC狀態切置→RUN位置。

After the Update, please turn off the power, and



請確定PLC已經可以處於RUN的狀態。

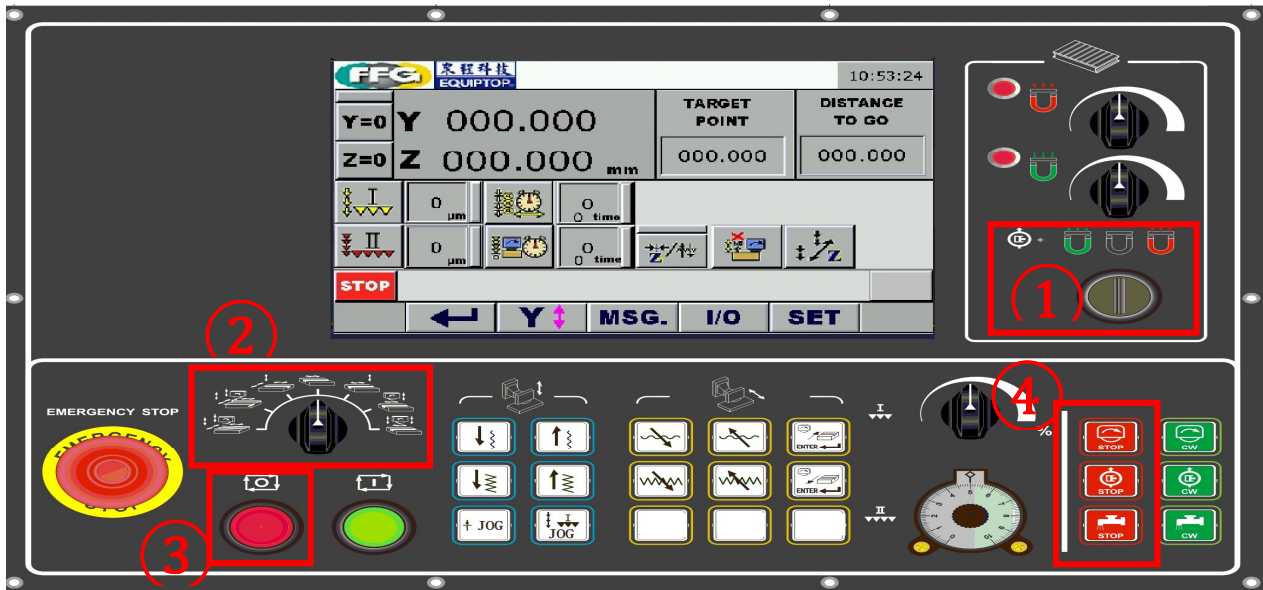
<RUN燈亮>

Please make sure the light of RUN is running, it means PLC is running.

故障原因 程式備份器更新PLC程式 **Update PLC by the backup device.**

以上PLC程式還原後，開機送電!請先執行出廠值動作

After the above procedures, please turn on the PLC and process the following steps to



① 選擇不吸磁與不脫磁 **Select the neutral magnetizer position.**

② 選擇Y=0模式 **Select Y=0 mode**

③+④ 砂輪停止鈕+油壓停止鈕+水機停止鈕+自動運轉停止鈕 同時按住3秒
人機會出現【請關電重開，新的系統參數設定值方有效】
請關電重開!

Press ALL red buttons together and continuous 3 seconds, now the screen will request you to restart the machine, so the new parameter setting are effective. Please restart the machine.